

DNA-RNA_Chi2: 5' _dT_dT_dT_d _dT_dT_dT_d _dT_dT_dT_d _dT_dT_rC_d _{T_r}C_dT 3'

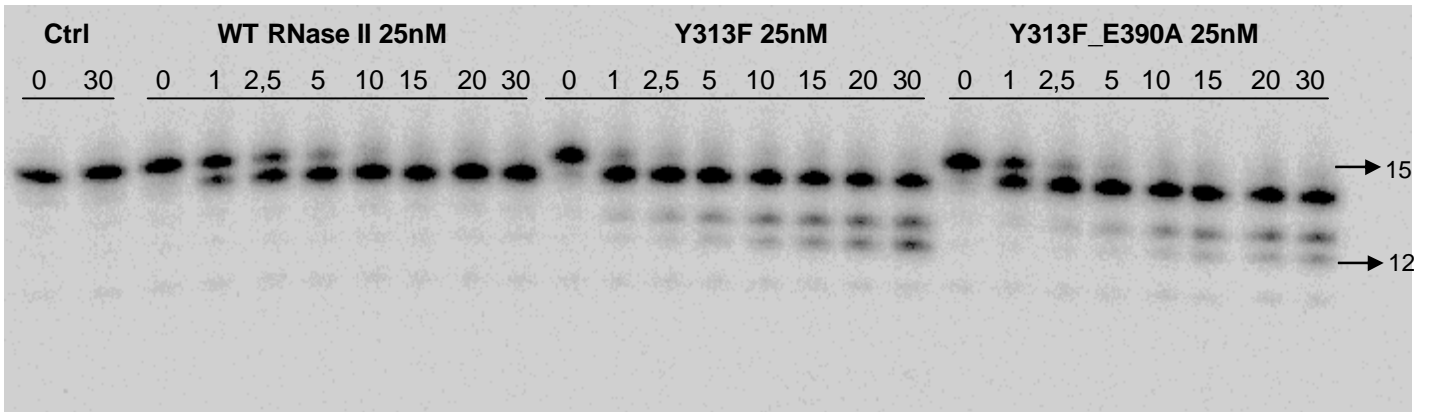


Figure S2: Exoribonuclease activity with DNA-RNA Chimera2 substrate: comparison of wild-type and mutants. Activity assays were performed as described under “Experimental Procedures” using a 15-mer chimeric substrate Chi2 (5' dTdTdTdTdTdTdTdTdTdTdT_rC_dT_rC_dT 3') where the 2nd and 4th positions from the 3'-end are occupied by ribonucleotides, and the other 13 are deoxyribonucleotides. The mutants used and their respective protein concentrations are shown. The wild-type enzyme was used as control. Samples were taken during the reaction at the time points indicated, and reaction products were analyzed in a 20% polyacrylamide/7M urea gel. Control reactions with no enzyme added (Ctrl) were incubated at the maximum reaction time for each protein. Length of substrates and degradation products are indicated in the figure.