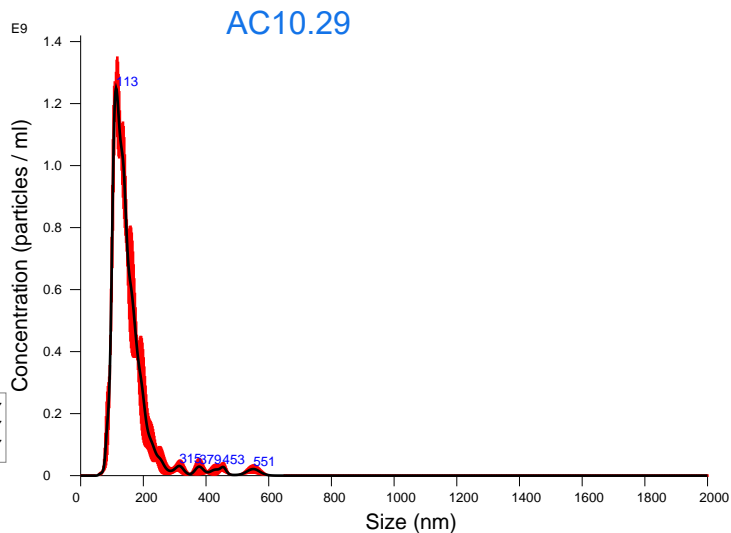


FTLA Concentration / Size graph for Experiment:  
02 17 2025-AC10 2025-02-17 10-36-18



Averaged FTLA Concentration / Size for Experiment:  
02 17 2025-AC10 2025-02-17 10-36-18  
Error bars indicate + / -1 standard error of the mean

### Included Files

02 17 2025-AC10 2025-02-17 10-37-27  
02 17 2025-AC10 2025-02-17 10-38-37  
02 17 2025-AC10 2025-02-17 10-39-47

### Details

NTA Version: NTA 3.4 Build 3.4.4  
Script Used: SOP Standard Measurement 01-50-14PM 14~  
Time Captured: 10:36:18 17/02/2025  
Operator:  
Pre-treatment:  
Sample Name:  
Diluent:  
Remarks:

### Capture Settings

Camera Type: sCMOS  
Laser Type: Blue405  
Camera Level: 12  
Slider Shutter: 1200  
Slider Gain: 125  
FPS: 25.0  
Number of Frames: 1498  
Temperature: 22.0 °C  
Viscosity: (Water) 0.953 - 0.953 cP  
Dilution factor: 5 x 10e2  
Syringe Pump Speed: 70

### Analysis Settings

Detect Threshold: 5  
Blur Size: Auto  
Max Jump Distance: Auto: 12.9 - 15.2 pix

### Results

Stats: Merged Data

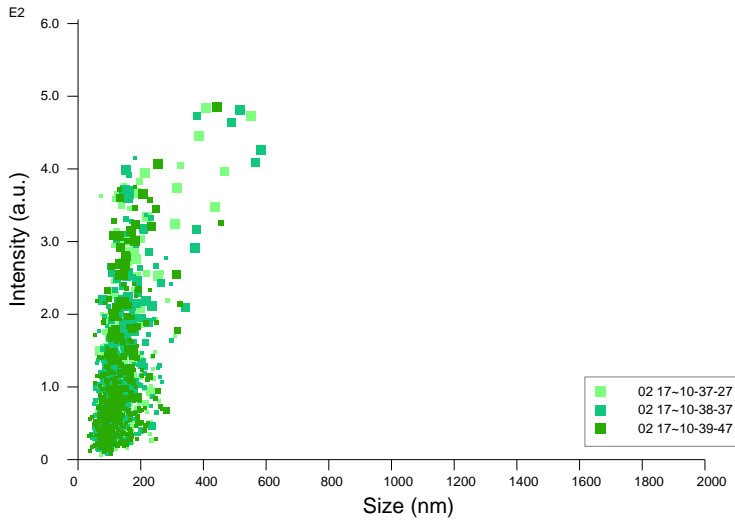
Mean: 156.1 nm  
Mode: 113.1 nm  
SD: 73.6 nm  
D10: 103.2 nm  
D50: 136.6 nm  
D90: 213.5 nm

Stats: Mean +/- Standard Error

Mean: 156.0 +/- 4.1 nm  
Mode: 111.7 +/- 3.1 nm

SD: 71.9 +/- 8.8 nm  
D10: 103.2 +/- 0.3 nm  
D50: 136.9 +/- 1.1 nm  
D90: 208.7 +/- 9.0 nm

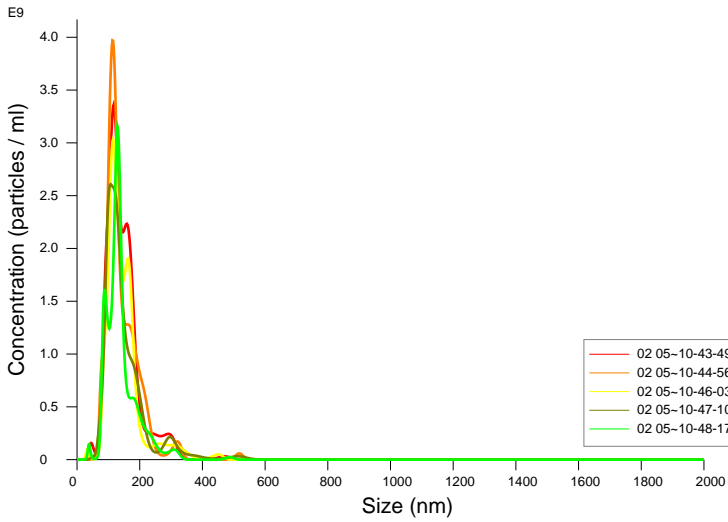
Concentration (Upgrade): 4.71e+10 +/- 1.42e+09 particles/ml  
10.1 +/- 0.5 particles/frame  
10.4 +/- 0.5 centres/frame



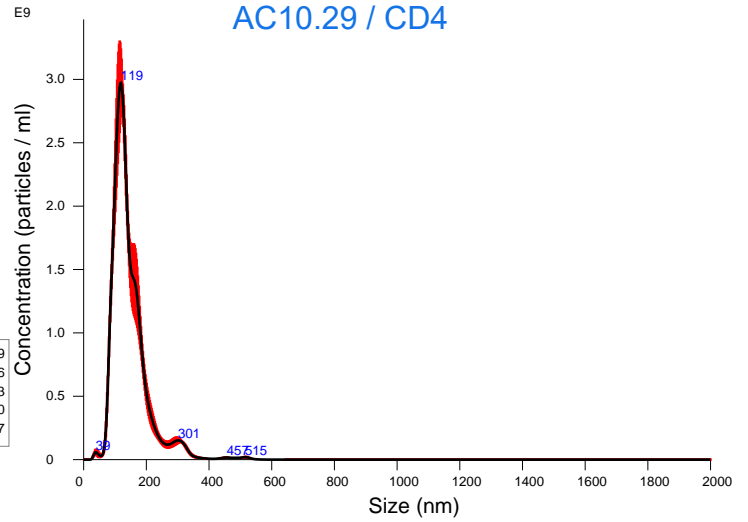
Intensity / Size graph for Experiment:  
02 17 2025-AC10 2025-02-17 10-36-18

**Script Used: (Full Text):**

SOP Standard Measurement 01-50-14PM 14Feb2025.txt



FTLA Concentration / Size graph for Experiment:  
02 05 2025-AC10CD4 2025-02-05 10-42-10



Averaged FTLA Concentration / Size for Experiment:  
02 05 2025-AC10CD4 2025-02-05 10-42-10  
Error bars indicate + / -1 standard error of the mean

## Included Files

02 05 2025-AC10CD4 2025-02-05 10-43-49  
02 05 2025-AC10CD4 2025-02-05 10-44-56  
02 05 2025-AC10CD4 2025-02-05 10-46-03  
02 05 2025-AC10CD4 2025-02-05 10-47-10  
02 05 2025-AC10CD4 2025-02-05 10-48-17

## Details

NTA Version: NTA 3.4 Build 3.4.4  
Script Used: SOP Standard Measurement 01-09-13PM 03~  
Time Captured: 10:42:10 05/02/2025  
Operator: ALMU  
Pre-treatment:  
Sample Name: AC10-CD4  
Diluent: 1/500  
Remarks: X100

## Capture Settings

Camera Type: sCMOS  
Laser Type: Blue405  
Camera Level: 15  
Slider Shutter: 1206  
Slider Gain: 245  
FPS: 25.0  
Number of Frames: 1498  
Temperature: 22.0 °C  
Viscosity: (Water) 1.0 cP  
Dilution factor: 5 x 10e2  
Syringe Pump Speed: 70

## Analysis Settings

Detect Threshold: 5  
Blur Size: Auto  
Max Jump Distance: Auto: 14.8 - 17.1 pix

## Results

Stats: Merged Data

Mean: 145.9 nm  
Mode: 118.3 nm  
SD: 59.5 nm  
D10: 93.4 nm  
D50: 130.7 nm  
D90: 209.1 nm

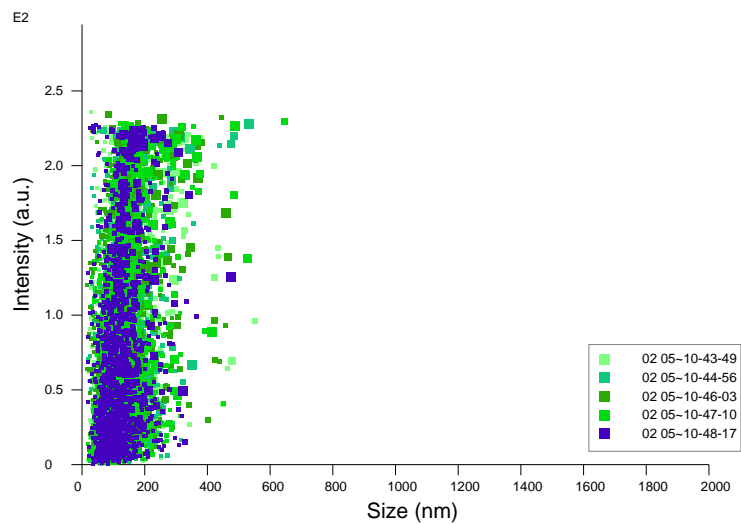
Stats: Mean +/- Standard Error

Mean: 145.7 +/- 1.6 nm  
Mode: 116.5 +/- 3.6 nm

SD: 59.2 +/- 2.7 nm  
D10: 93.4 +/- 1.3 nm  
D50: 130.9 +/- 1.5 nm  
D90: 208.6 +/- 2.0 nm

Concentration (Upgrade): 1.21e+11 +/- 8.70e+09 particles/ml  
35.1 +/- 2.7 particles/frame  
44.3 +/- 3.0 centres/frame

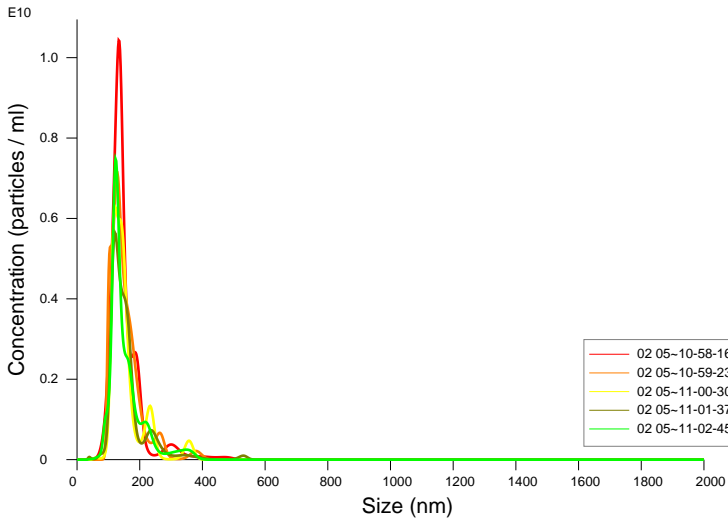
Concentration measurements may require some caution due to noise  
See summary file for more info



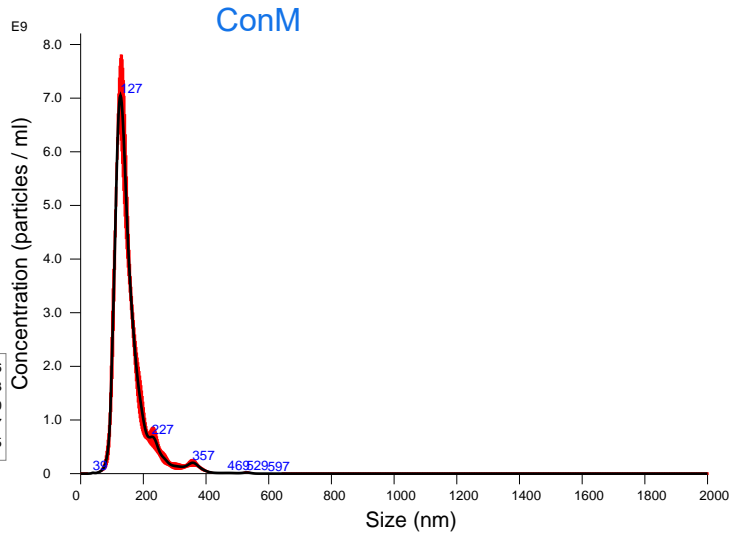
Intensity / Size graph for Experiment:  
02 05 2025-AC10CD4 2025-02-05 10-42-10

**Script Used: (Full Text):**

SOP Standard Measurement 01-09-13PM 03Feb2025.txt



FTLA Concentration / Size graph for Experiment:  
02 05 2025-CONM 2025-02-05 10-57-01



Averaged FTLA Concentration / Size for Experiment:  
02 05 2025-CONM 2025-02-05 10-57-01  
Error bars indicate + / -1 standard error of the mean

**Included Files**

- 02 05 2025-CONM 2025-02-05 10-58-16
- 02 05 2025-CONM 2025-02-05 10-59-23
- 02 05 2025-CONM 2025-02-05 11-00-30
- 02 05 2025-CONM 2025-02-05 11-01-37
- 02 05 2025-CONM 2025-02-05 11-02-45

**Details**

NTA Version: NTA 3.4 Build 3.4.4  
 Script Used: SOP Standard Measurement 01-09-13PM 03~  
 Time Captured: 10:57:01 05/02/2025  
 Operator: ALMU  
 Pre-treatment:  
 Sample Name: CONM  
 Diluent: 1/500  
 Remarks: X100

**Capture Settings**

Camera Type: sCMOS  
 Laser Type: Blue405  
 Camera Level: 13  
 Slider Shutter: 1232  
 Slider Gain: 175  
 FPS: 25.0  
 Number of Frames: 1498  
 Temperature: 22.0 - 22.0 °C  
 Viscosity: (Water) 0.953 - 0.953 cP  
 Dilution factor: 5 x 10e2  
 Syringe Pump Speed: 70

**Analysis Settings**

Detect Threshold: 5  
 Blur Size: Auto  
 Max Jump Distance: Auto: 13.4 - 14.0 pix

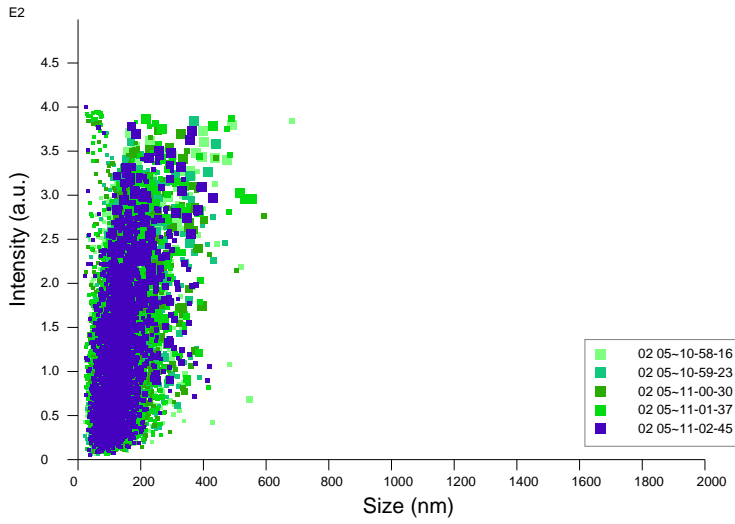
**Results**

Stats: Merged Data

Mean: 154.7 nm  
 Mode: 126.9 nm  
 SD: 56.0 nm  
 D10: 109.0 nm  
 D50: 139.2 nm  
 D90: 219.7 nm

Stats: Mean +/- Standard Error

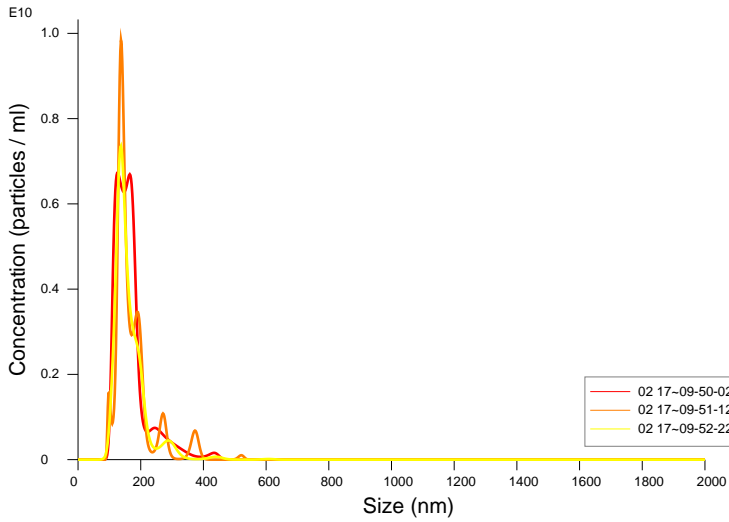
Mean: 155.0 +/- 1.0 nm  
 Mode: 125.6 +/- 2.4 nm  
 SD: 56.1 +/- 1.7 nm  
 D10: 109.2 +/- 1.0 nm  
 D50: 139.3 +/- 1.0 nm  
 D90: 220.0 +/- 6.5 nm  
 Concentration (Upgrade): 2.37e+11 +/- 2.03e+10 particles/ml  
 63.9 +/- 5.7 particles/frame  
 70.0 +/- 5.6 centres/frame



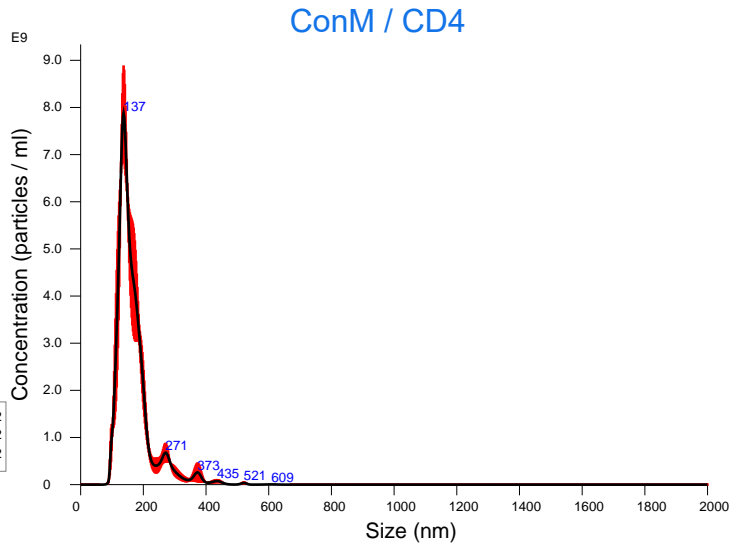
Intensity / Size graph for Experiment:  
02 05 2025-CONM 2025-02-05 10-57-01

**Script Used: (Full Text):**

SOP Standard Measurement 01-09-13PM 03Feb2025.txt



FTLA Concentration / Size graph for Experiment:  
02 17 2025-CONM CD4 2025-02-17 09-48-51



Averaged FTLA Concentration / Size for Experiment:  
02 17 2025-CONM CD4 2025-02-17 09-48-51  
Error bars indicate + / -1 standard error of the mean

### Included Files

02 17 2025-CONM CD4 2025-02-17 09-50-02  
02 17 2025-CONM CD4 2025-02-17 09-51-12  
02 17 2025-CONM CD4 2025-02-17 09-52-22

### Details

NTA Version: NTA 3.4 Build 3.4.4  
Script Used: SOP Standard Measurement 01-50-14PM 14~  
Time Captured: 09:48:51 17/02/2025  
Operator:  
Pre-treatment:  
Sample Name:  
Diluent:  
Remarks:

### Capture Settings

Camera Type: sCMOS  
Laser Type: Blue405  
Camera Level: 12  
Slider Shutter: 1200  
Slider Gain: 125  
FPS: 25.0  
Number of Frames: 1498  
Temperature: 22.0 - 22.0 °C  
Viscosity: (Water) 0.952 - 0.953 cP  
Dilution factor: 5 x 10e2  
Syringe Pump Speed: 70

### Analysis Settings

Detect Threshold: 5  
Blur Size: Auto  
Max Jump Distance: Auto: 12.0 - 12.8 pix

### Results

Stats: Merged Data

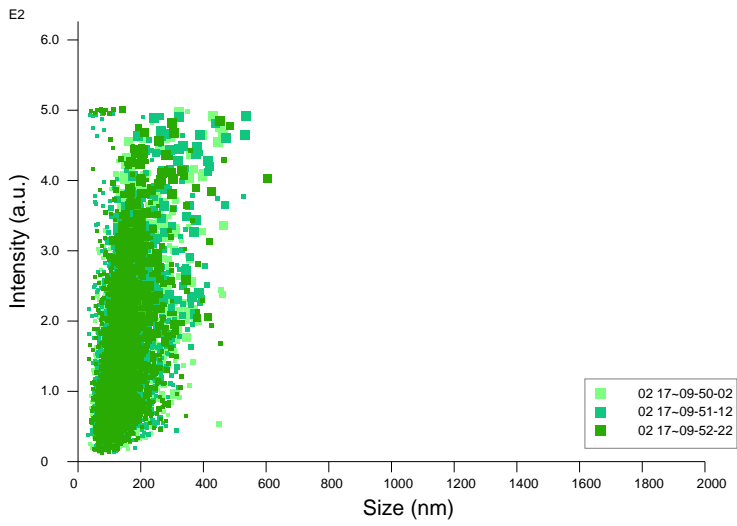
Mean: 167.6 nm  
Mode: 137.0 nm  
SD: 57.2 nm  
D10: 119.6 nm  
D50: 152.1 nm  
D90: 232.0 nm

Stats: Mean +/- Standard Error

Mean: 167.5 +/- 2.3 nm  
Mode: 133.4 +/- 3.6 nm

SD: 57.0 +/- 2.7 nm  
D10: 120.4 +/- 2.4 nm  
D50: 151.9 +/- 1.6 nm  
D90: 236.9 +/- 12.0 nm

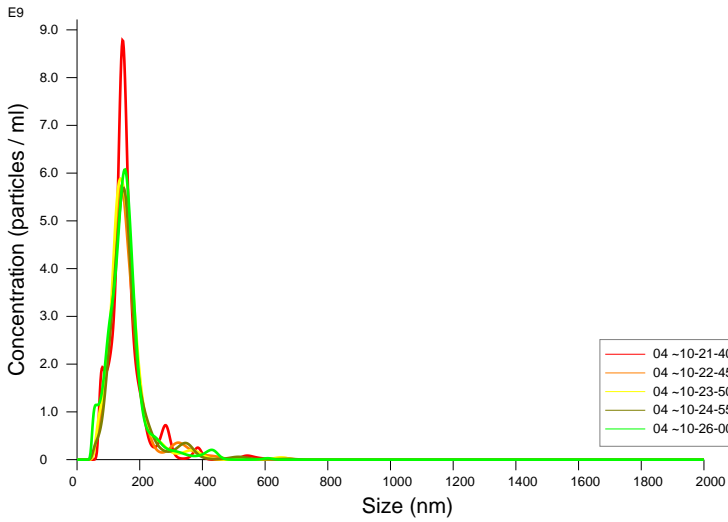
Concentration (Upgrade): 2.70e+11 +/- 1.88e+10 particles/ml  
71.1 +/- 5.2 particles/frame  
69.6 +/- 4.6 centres/frame



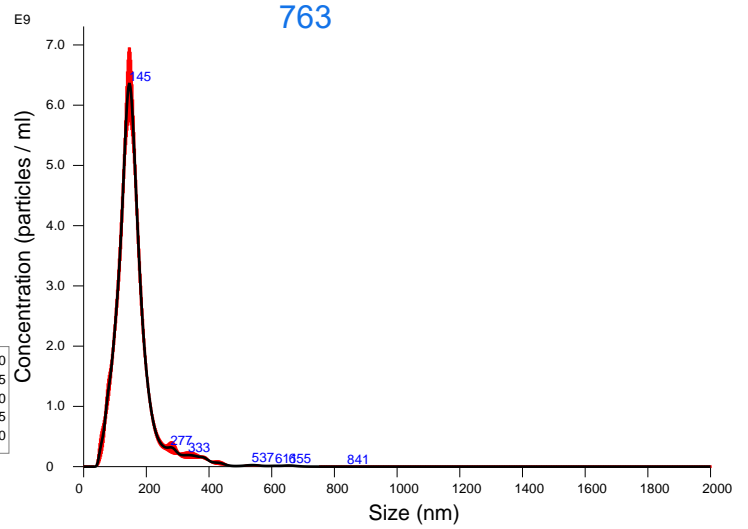
Intensity / Size graph for Experiment:  
02 17 2025-CONM CD4 2025-02-17 09-48-51

**Script Used: (Full Text):**

SOP Standard Measurement 01-50-14PM 14Feb2025.txt



FTLA Concentration / Size graph for Experiment:  
04 28 25-763-200 2025-04-28 10-20-28



Averaged FTLA Concentration / Size for Experiment:  
04 28 25-763-200 2025-04-28 10-20-28  
Error bars indicate + / -1 standard error of the mean

### Included Files

04 28 25-763-200 2025-04-28 10-21-40  
04 28 25-763-200 2025-04-28 10-22-45  
04 28 25-763-200 2025-04-28 10-23-50  
04 28 25-763-200 2025-04-28 10-24-55  
04 28 25-763-200 2025-04-28 10-26-00

### Details

NTA Version: NTA 3.4 Build 3.4.4  
Script Used: [Modified] Script\_VEXION.txt  
Time Captured: 10:20:28 28/04/2025  
Operator:  
Pre-treatment:  
Sample Name:  
Diluent:  
Remarks:

### Capture Settings

Camera Type: sCMOS  
Laser Type: Blue405  
Camera Level: 12  
Slider Shutter: 1200  
Slider Gain: 125  
FPS: 25.0  
Number of Frames: 1498  
Temperature: 22.0 - 22.0 °C  
Viscosity: (Water) 0.952 - 0.953 cP  
Dilution factor: 2 x 10e2  
Syringe Pump Speed: 70

### Analysis Settings

Detect Threshold: 5  
Blur Size: Auto  
Max Jump Distance: Auto: 12.8 - 14.7 pix

### Results

Stats: Merged Data

Mean: 160.3 nm  
Mode: 146.0 nm  
SD: 67.4 nm  
D10: 99.2 nm  
D50: 148.9 nm  
D90: 220.8 nm

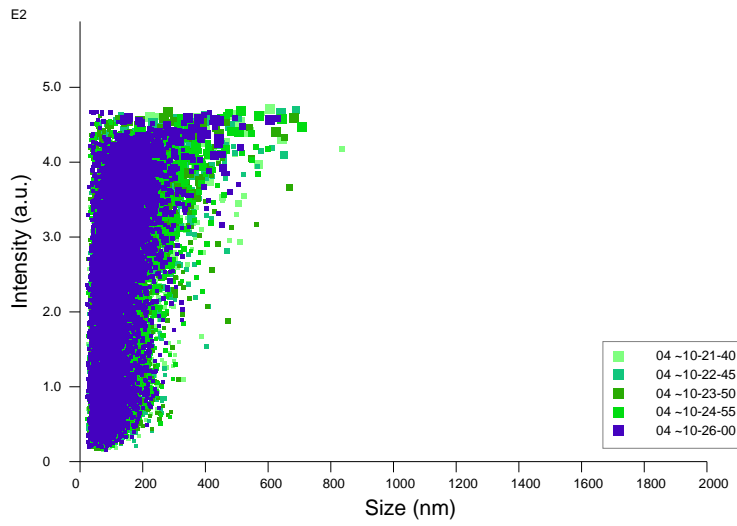
Stats: Mean +/- Standard Error

Mean: 160.4 +/- 1.4 nm  
Mode: 145.5 +/- 2.3 nm

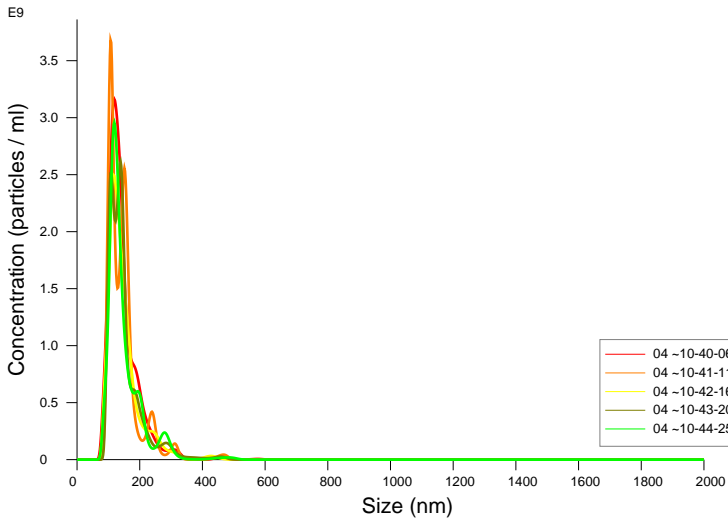
SD: 67.4 +/- 1.3 nm  
D10: 99.3 +/- 2.1 nm  
D50: 148.9 +/- 0.5 nm  
D90: 220.8 +/- 2.9 nm

Concentration (Upgrade): 2.75e+11 +/- 6.23e+09 particles/ml  
213.8 +/- 5.1 particles/frame  
260.2 +/- 5.2 centres/frame

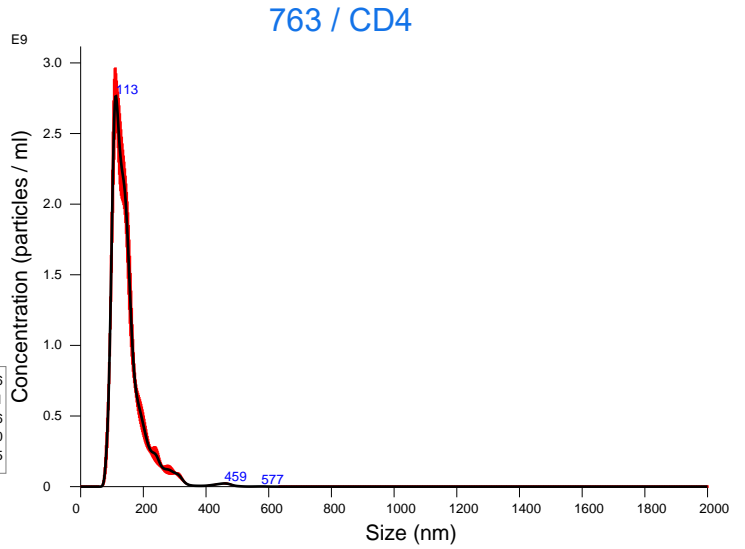
Concentration measurements may require some caution due to noise  
See summary file for more info



Intensity / Size graph for Experiment:  
04 28 25-763-200 2025-04-28 10-20-28



FTLA Concentration / Size graph for Experiment:  
04 28 25-763CD4-200 2025-04-28 10-38-56



Averaged FTLA Concentration / Size for Experiment:  
04 28 25-763CD4-200 2025-04-28 10-38-56  
Error bars indicate + / -1 standard error of the mean

## Included Files

04 28 25-763CD4-200 2025-04-28 10-40-06  
04 28 25-763CD4-200 2025-04-28 10-41-11  
04 28 25-763CD4-200 2025-04-28 10-42-16  
04 28 25-763CD4-200 2025-04-28 10-43-20  
04 28 25-763CD4-200 2025-04-28 10-44-25

## Details

NTA Version: NTA 3.4 Build 3.4.4  
Script Used: [Modified] Script\_VEXION.txt  
Time Captured: 10:38:56 28/04/2025  
Operator:  
Pre-treatment:  
Sample Name:  
Diluent:  
Remarks:

## Capture Settings

Camera Type: sCMOS  
Laser Type: Blue405  
Camera Level: 13  
Slider Shutter: 1232  
Slider Gain: 175  
FPS: 25.0  
Number of Frames: 1498  
Temperature: 22.0 - 22.0 °C  
Viscosity: (Water) 0.952 - 0.953 cP  
Dilution factor: 2 x 10e2  
Syringe Pump Speed: 70

## Analysis Settings

Detect Threshold: 5  
Blur Size: Auto  
Max Jump Distance: Auto: 12.9 - 13.3 pix

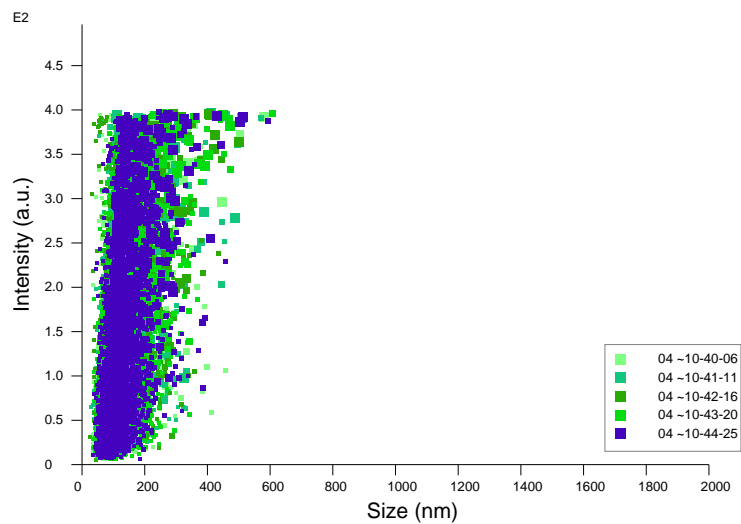
## Results

Stats: Merged Data

Mean: 147.7 nm  
Mode: 112.1 nm  
SD: 54.2 nm  
D10: 101.5 nm  
D50: 133.8 nm  
D90: 211.8 nm

Stats: Mean +/- Standard Error

Mean: 147.8 +/- 0.7 nm  
Mode: 120.4 +/- 5.0 nm  
SD: 54.3 +/- 0.9 nm  
D10: 101.5 +/- 0.5 nm  
D50: 133.9 +/- 0.9 nm  
D90: 212.7 +/- 1.8 nm  
Concentration (Upgrade): 1.01e+11 +/- 4.29e+09 particles/ml  
72.7 +/- 3.1 particles/frame  
69.7 +/- 2.7 centres/frame



Intensity / Size graph for Experiment:  
04 28 25-763CD4-200 2025-04-28 10-38-56