

1 **Supplemental information**

2 **Mice with pulmonary fibrosis driven by telomere dysfunction**

3
4 **Juan M. Povedano¹, Paula Martinez¹, Juana M. Flores², Francisca Mulero³,**
5 **and Maria A. Blasco^{1*}**

6
7 ¹Telomeres and Telomerase Group, Molecular Oncology Program, Spanish National
8 Cancer Centre (CNIO), Melchor Fernández Almagro 3, Madrid, E-28029, Spain.

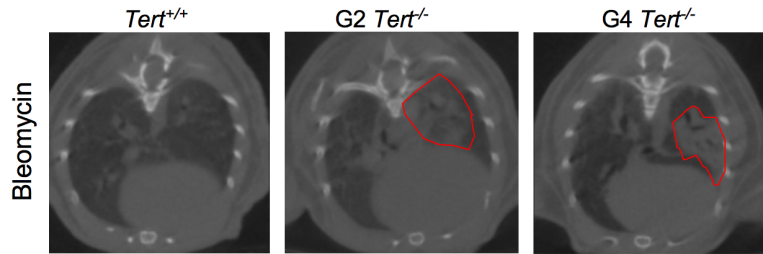
9
10 ²Animal Surgery and Medicine Department, Faculty of Veterinary Science,
11 Complutense University of Madrid, E-28029 Madrid.

12
13 ³Molecular Imaging Unit, Spanish National Cancer Research Centre (CNIO),
14 Melchor Fernández Almagro 3, Madrid, E-28029, Spain.

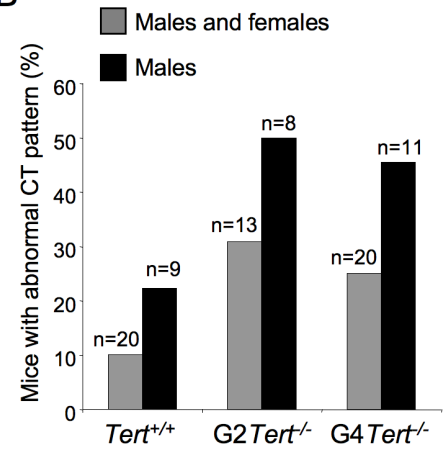
15
16
17 **Supplementary Figure 1: Application of low bleomycin dose to telomerase**
18 **deficient lungs induces abnormal lung CT-pattern reminiscent of pulmonary**
19 **fibrosis. (A)** Representative CT images of *Tert*^{+/+}, *G2Tert*^{-/-} and *G4Tert*^{-/-} lungs after
20 10 weeks post treatment with 0.5mg/kg BW bleomycin. **(B)** Percent of mice of both
21 genders and of male mice with abnormal CT pattern at week 10 post bleomycin
22 treatment. **(C)** Quantification of the affected lung volume. **(D)** Fold change affected
23 lung volume with abnormal CT pattern through the course of the experiment. T-test
24 was used for statistical analysis. Error bars represent standard error. The number of
25 mice analyzed per genotype is indicated. *, p=0.05. Related to Figure 4.

26

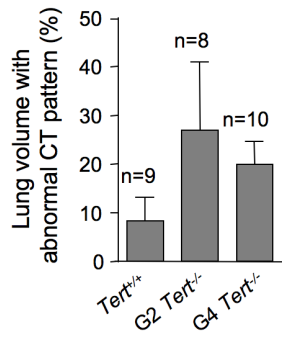
A



B



C



D

