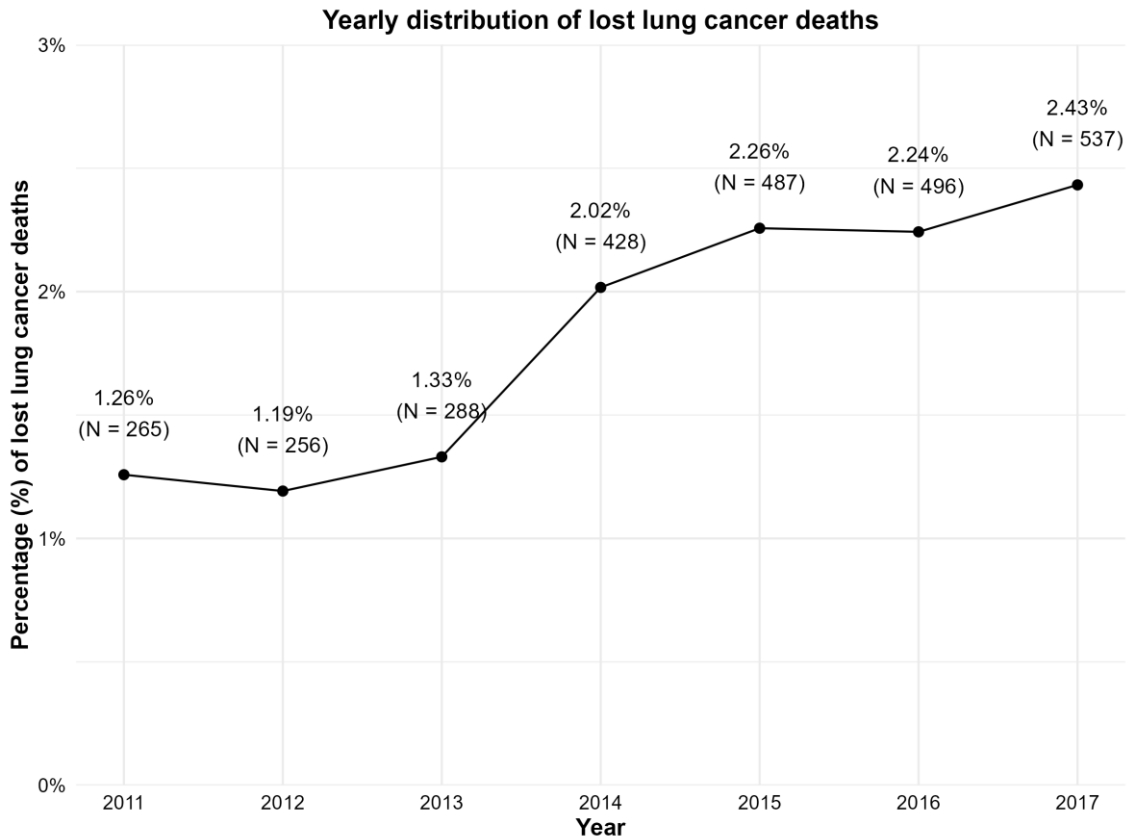
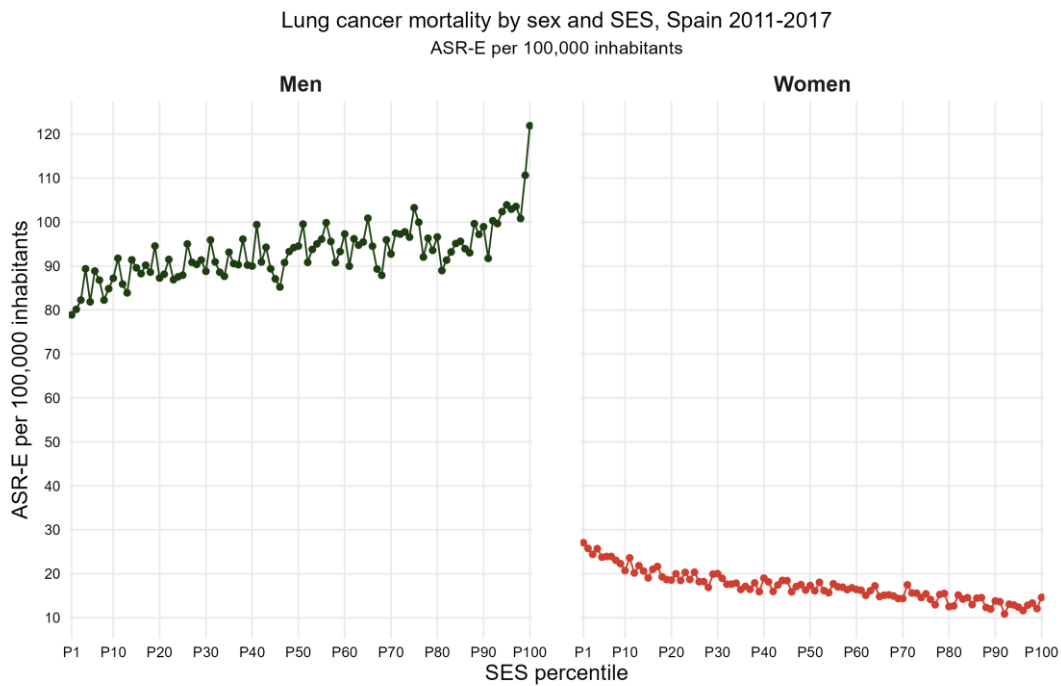


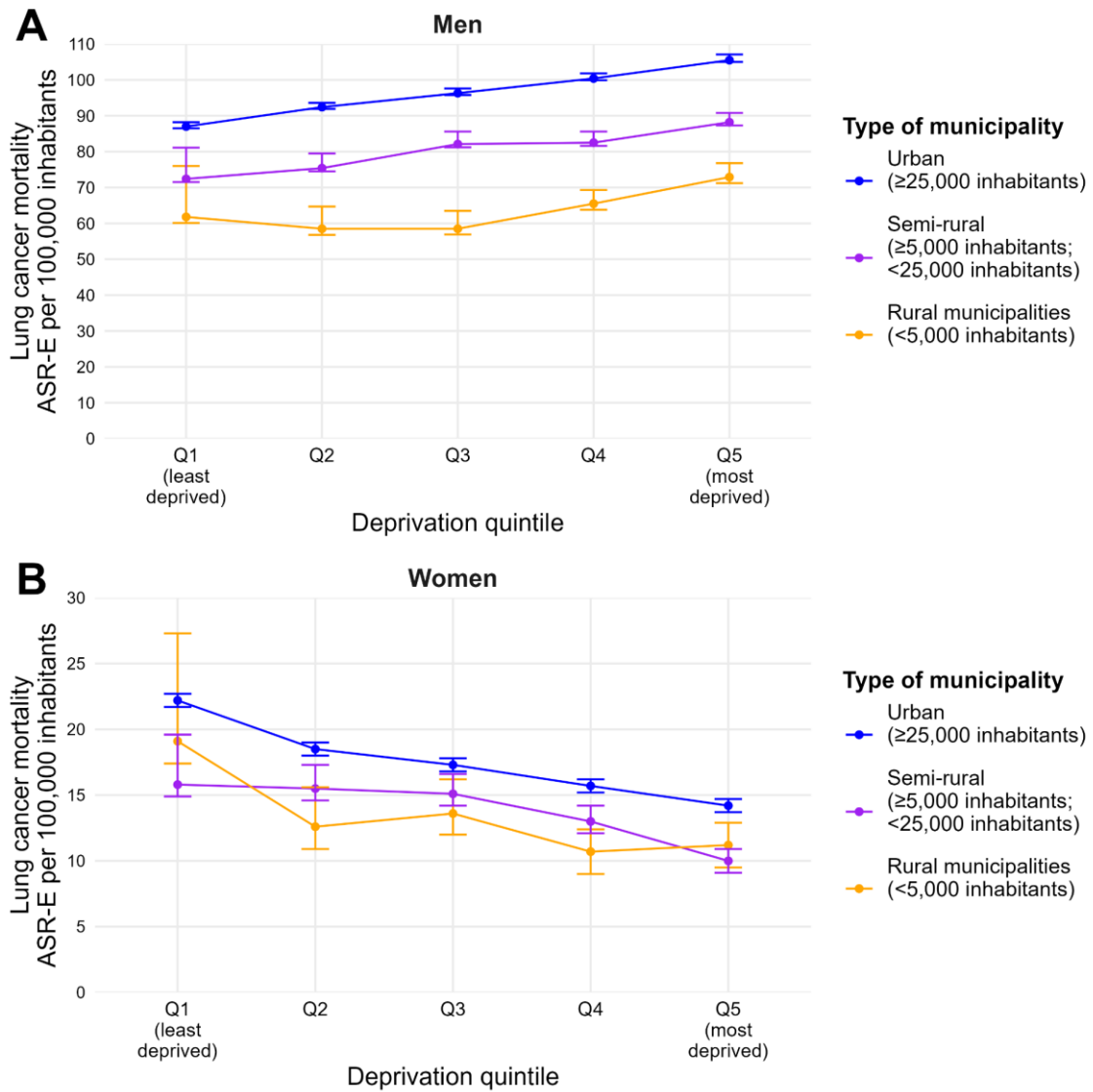
**Supplementary Figure 1.** Percentage (%) and number of lost lung cancer deaths (N) by year, after the merging of mortality with population and cartography. Spain, 2011-2017.



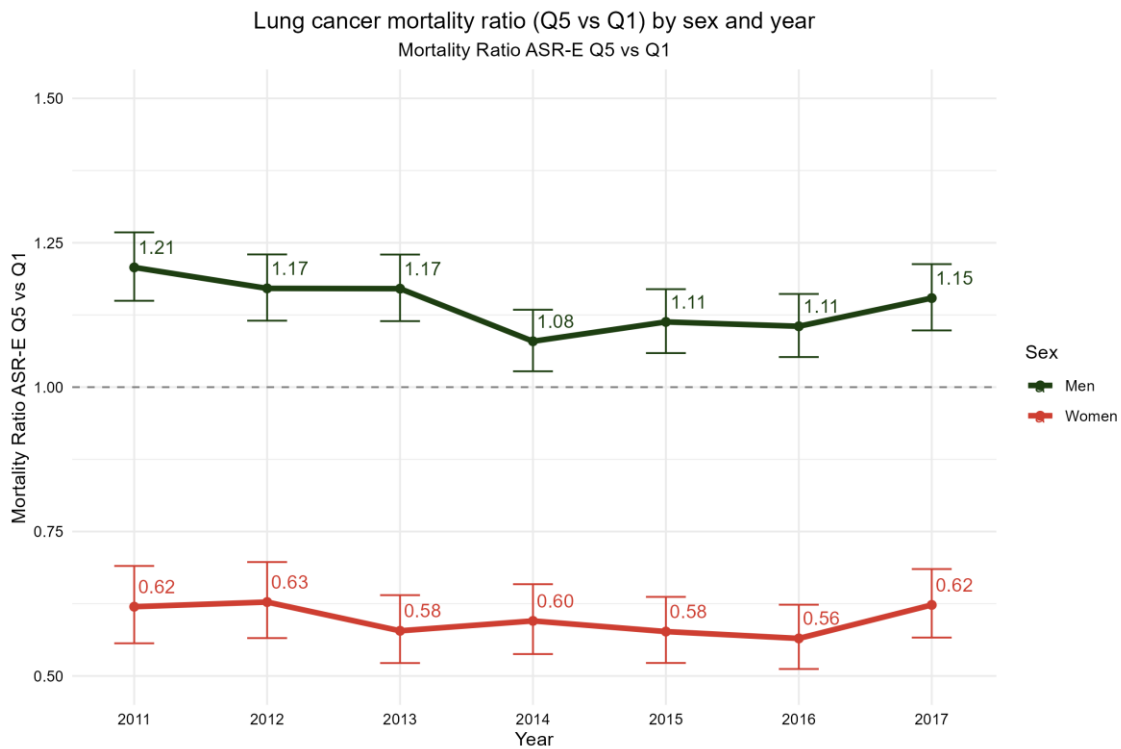
**Supplementary Figure 2.** Lung cancer mortality by sex and SES percentile. Spain, 2011-2017. Age-standardized lung cancer mortality rate per 100,000 inhabitants. (ASR-E: Age-standardized rates considering the 2013 European standard population).



**Supplementary Figure 3.** Lung cancer mortality by type of municipality (urban, semi-rural, and rural), sex, and deprivation quintile. Lung cancer mortality ASR-E per 100,000 inhabitants and 95% confidence interval. Spain, 2011-2017. (ASR-E: Age-standardized rates considering the 2013 European standard population).



**Supplementary Figure 4.** Lung cancer mortality ratio (Q5: most deprived vs Q1: least deprived) by sex and year. Spain, 2011-2017. (ASR-E: Age-standardized rates considering the 2013 European standard population).



**Supplementary Figure 5.** Smoking prevalence (%) by sex, educational level and year, 1997-2020. Source: Spanish National Health Survey.

