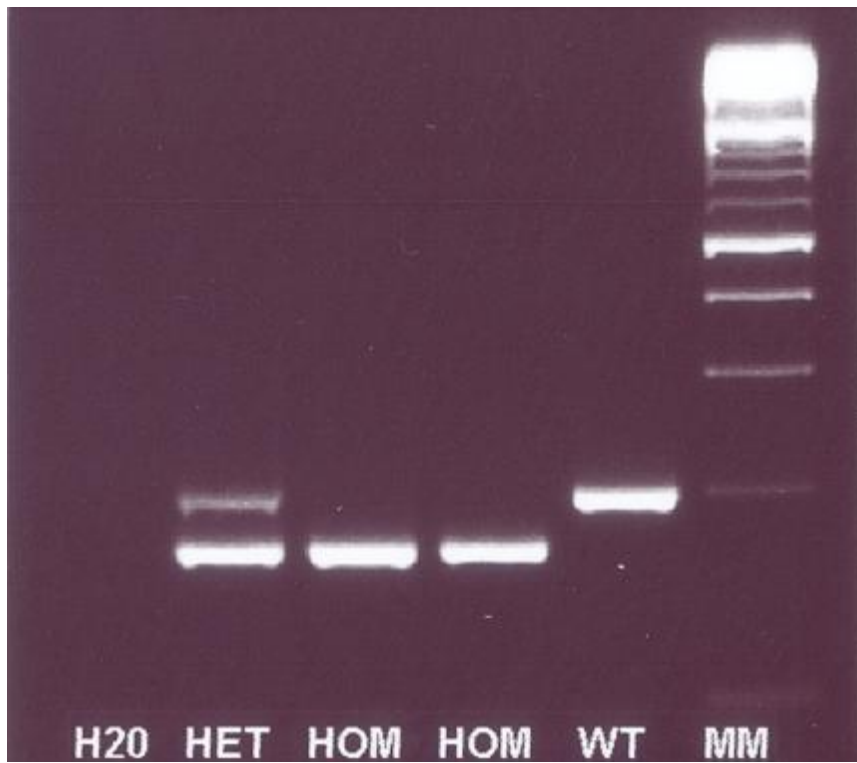


**Supplementary Figure 1:** Determination of CCR5 allele identity by diagnostic PCR amplification and agarose gel electrophoresis



Lane 1, negative control (H<sub>2</sub>O); lane 2, sample from a heterozygous patient (HT); lane 3 and 4, sample from a homozygous patient (HO); lane 5, sample from a wild-type patient (WT); lane 6, molecular mass marker (MM); 100-bp ladder.

**Supplementary Table 1.** Data of deceased patients infected with influenza A(H1N1)09 virus included in the study.

<b>Sample</b>	<b>Spanish region</b>	<b>Gender</b>	<b>Age</b>	<b>Sentinel case</b>	<b>Hospitalization</b>	<b>Clinical findings</b>	<b>Co-morbidities</b>	<b>CCR5</b>	<b>Year of death</b>
RR5911	Castilla la Mancha	Female	35	no	yes	Pneumonia	None	$\Delta 32/\Delta 32$	2009
RR7549	Aragón	Male	64	no	no	Pneumonia	None	$\Delta 32/\text{WT}$	2011
RR7627	Navarra	Male	44	no	yes	Multiorganic failure	Cardiopathy	$\Delta 32/\text{WT}$	2011
RR7660	Navarra	Female	89	no	yes	Pneumonia	Pulmonary disease	$\Delta 32/\text{WT}$	2011
RR6220	Murcia	Male	37	no	yes	Pneumonia	Renal failure	WT	2009
RR6530	Extremadura	Male	21	no	yes	Pneumonia	Immunodef.	WT	2010
RR6664	Galicia	Female	30	no	yes	Multiorganic failure	Pulmonary disease	WT	2009
RR7042	Murcia	Female	49	no	yes	Pneumonia	Immundef. & diabetes	WT	2011
RR7542	Aragón	Male	65	no	no	Pneumonia	None	WT	2011
RR7659	Navarra	Female	80	no	yes	Pneumonia	Cardiopathy	WT	2011
RR8066	Galicia	Male	45	no	yes	Pneumonia	Immunodef.	WT	2011

Abbreviations: Immunodef. was used instead of immunodeficiency.  $\Delta 32/\Delta 32$  indicates homozygous patient and  $\Delta 32/\text{WT}$  heterozygous patient.