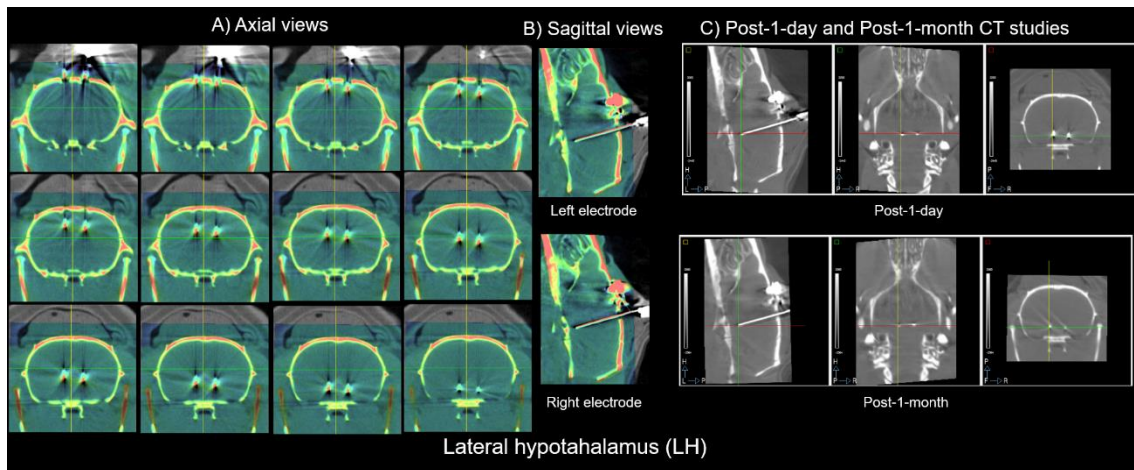
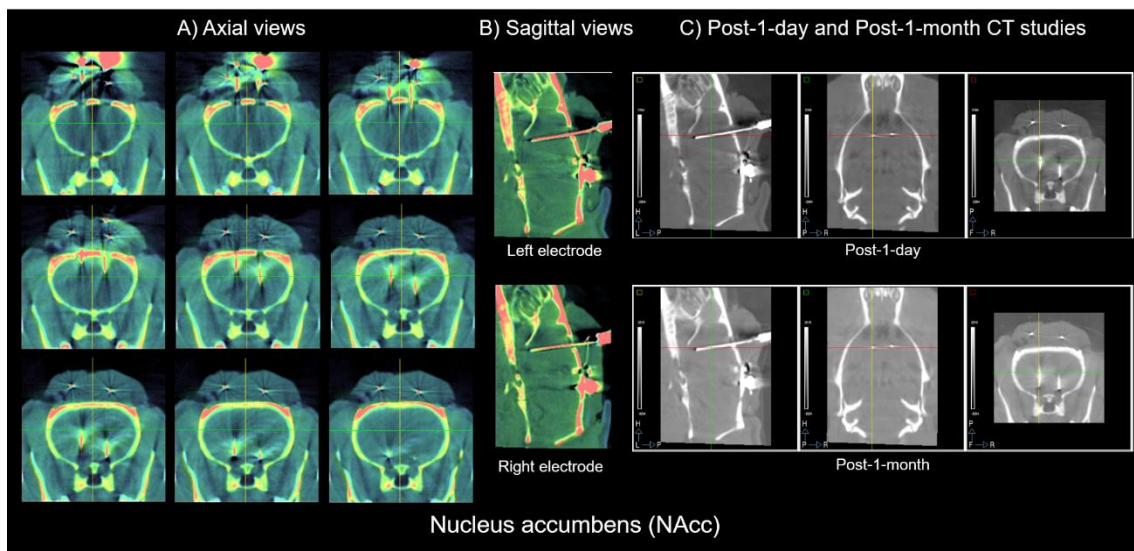


Supplementary material

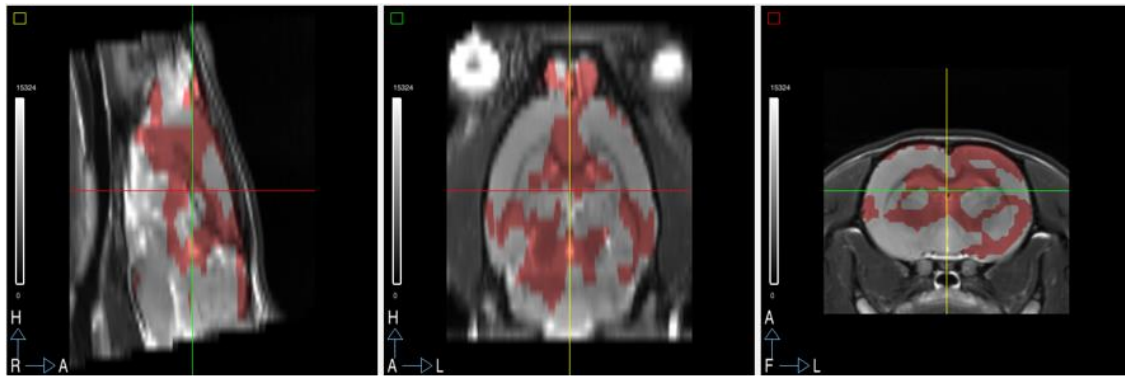


Supplementary Fig 1. Verification of absence of electrode displacement in the long-term in one LH operated animal. A) and B) show the post-1-month CT overlaid on the post-1-day CT of the same animal with electrodes targetting the LH. C) Represents the sagittal, coronal and axial views of the post-1-day and post-1-month CT studies for the same rat presented in A) and B).

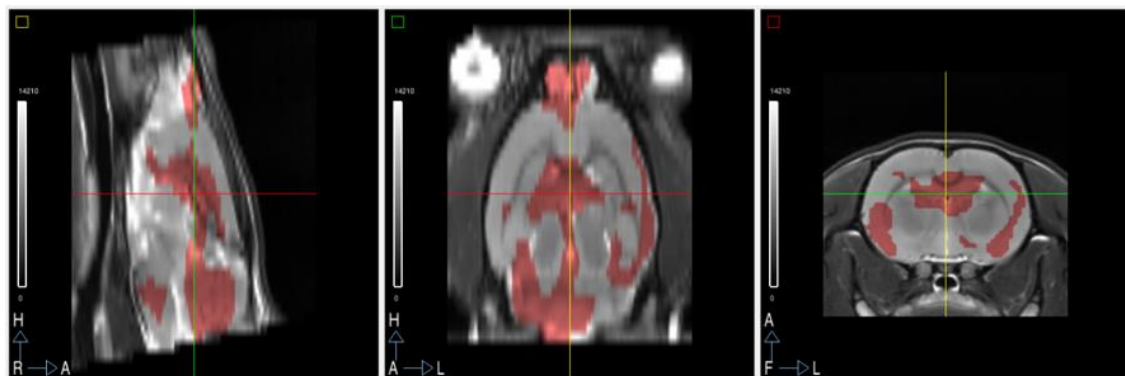


Supplementary Fig 2. Verification of absence of electrode displacement in the long-term in one NAcc-operated animal. A) and B) show the post-1-month CT overlaid on the post-1-day CT of the same animal with electrodes targetting the NAcc. C) Represents the sagittal, coronal and axial views of the post-1-day and post-1-month CT studies for the same rat presented in A) and B).

A) NSA LH



B) NSA NAcc



Supplementary Fig 3. Sagittal, coronal and axial views of the NSA masks for SPM analyses. A) Final NSA mask (red colored voxels) for the LH analyses overlaid on the reference MR image. B) Final NSA mask (red colored voxels) for the NAcc analyses overlaid on the reference MR image.