

Figure S1

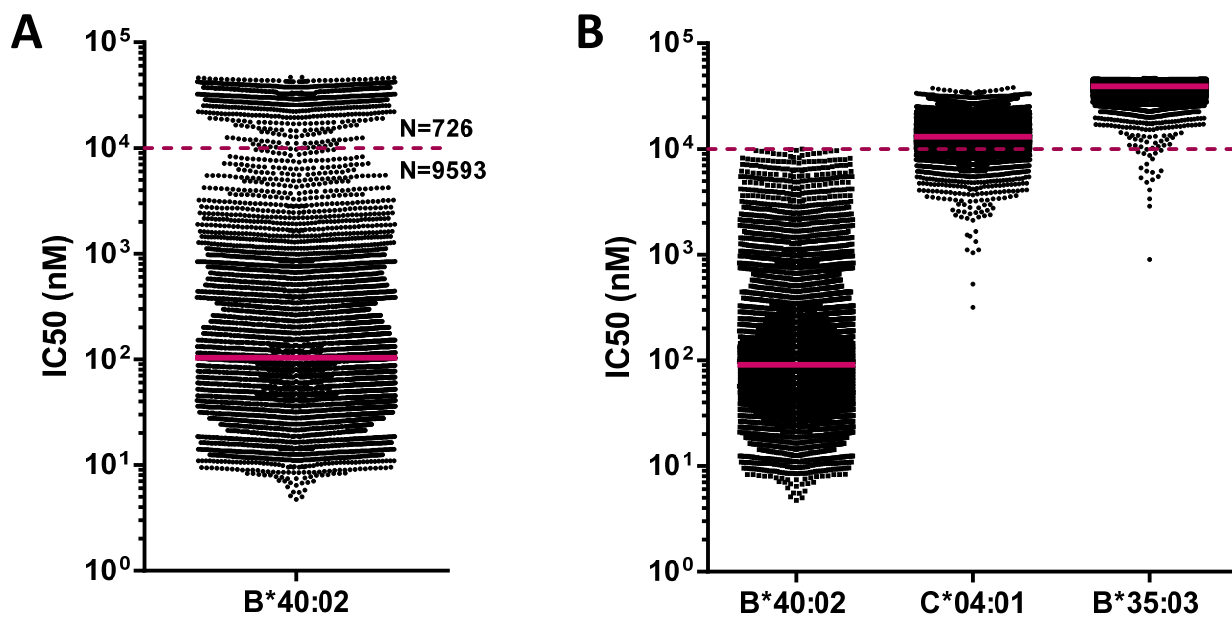


Figure S2

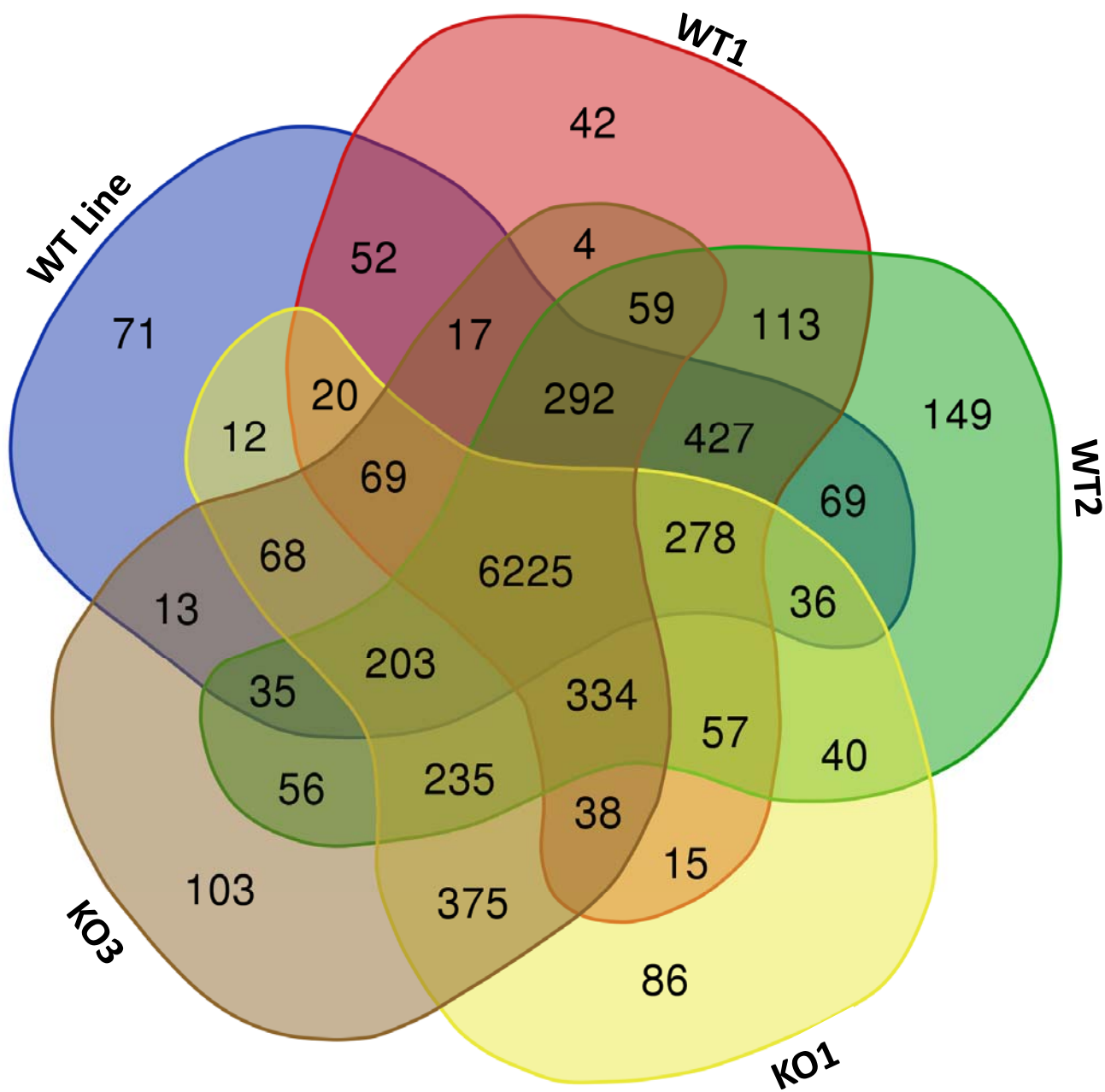


Figure S3

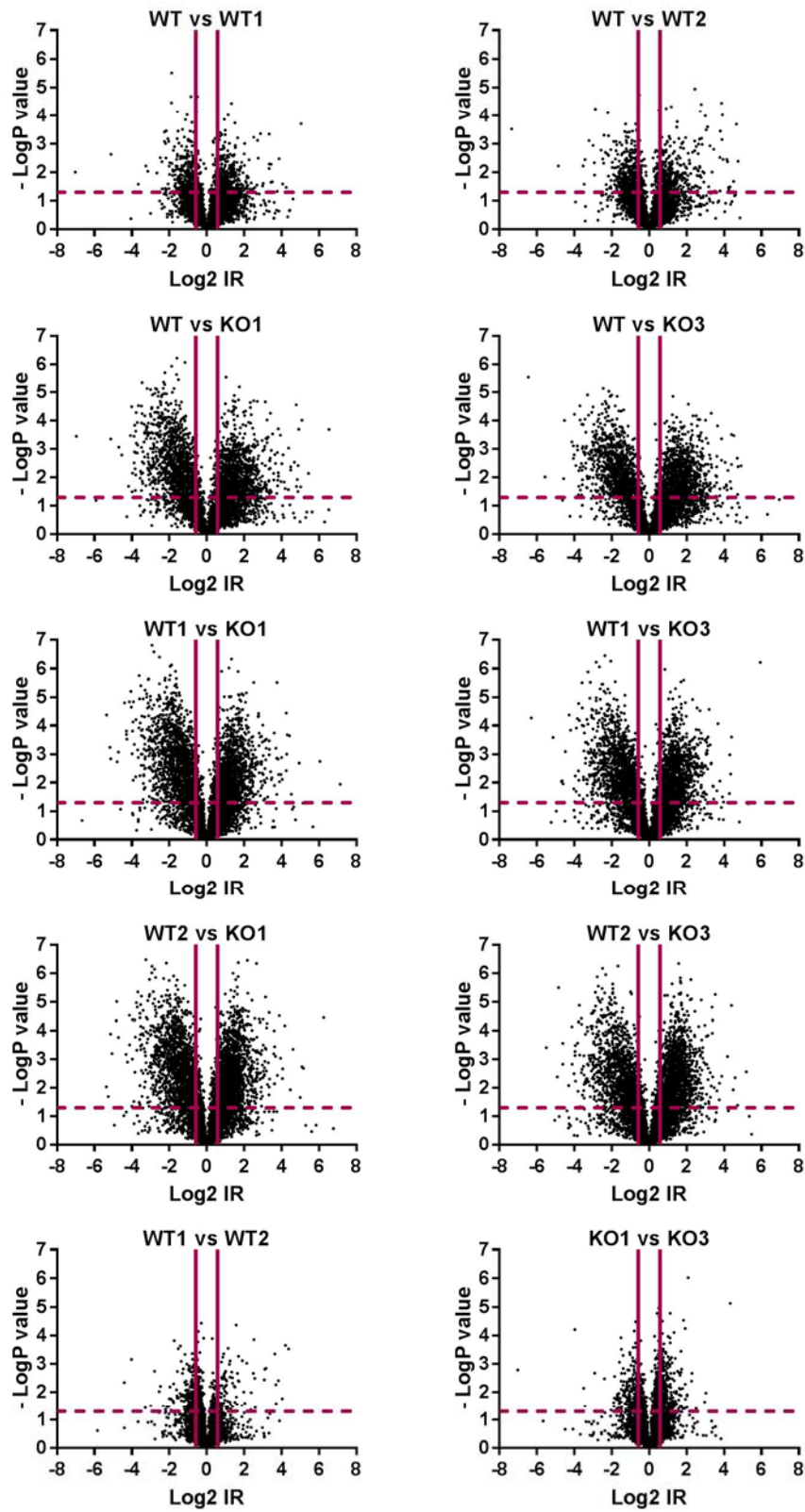
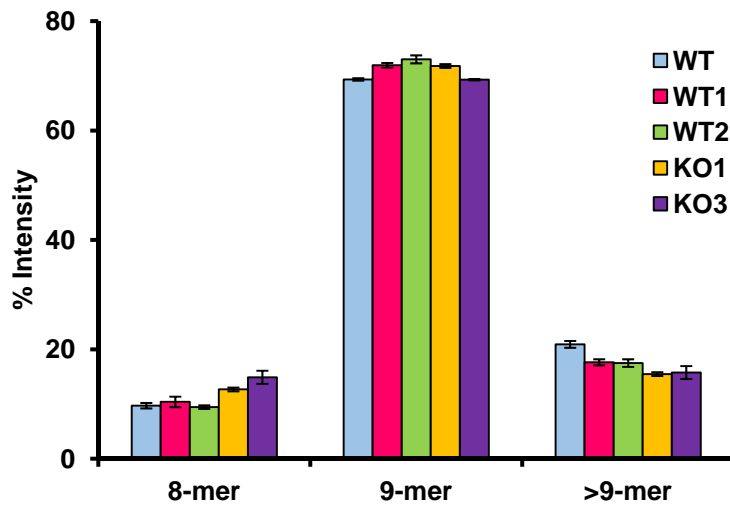


Figure S4



8-mer	WT	WT1	WT2	KO1	KO2
WT	-				
WT1	NS	-			
WT2	NS	NS	-		
KO1	1.0E-03	1.8E-02	2.7E-04	-	
KO2	2.3E-03	7.1E-03	1.6E-03	3.7E-02	-

9-mer	WT	WT1	WT2	KO1	KO2
WT	-				
WT1	7.6E-04	-			
WT2	1.1E-03	NS	-		
KO1	5.5E-04	NS	NS	-	
KO2	NS	4.9E-04	9.6E-04	3.1E-04	-

>9-mer	WT	WT1	WT2	KO1	KO2
WT	-				
WT1	2.4E-03	-			
WT2	3.1E-03	NS	-		
KO1	1.9E-04	4.9E-03	1.1E-02	-	
KO2	2.6E-03	NS	NS	NS	-

Figure S5

IR>1.0-1.5

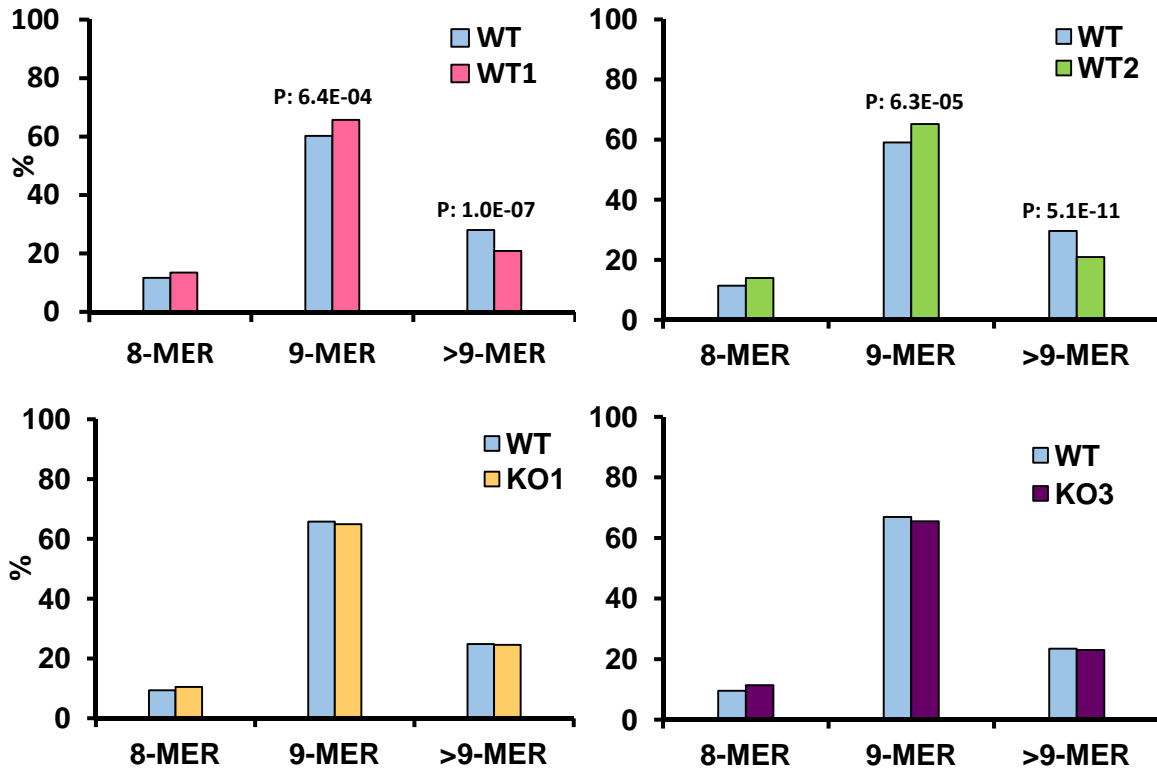


Figure S6

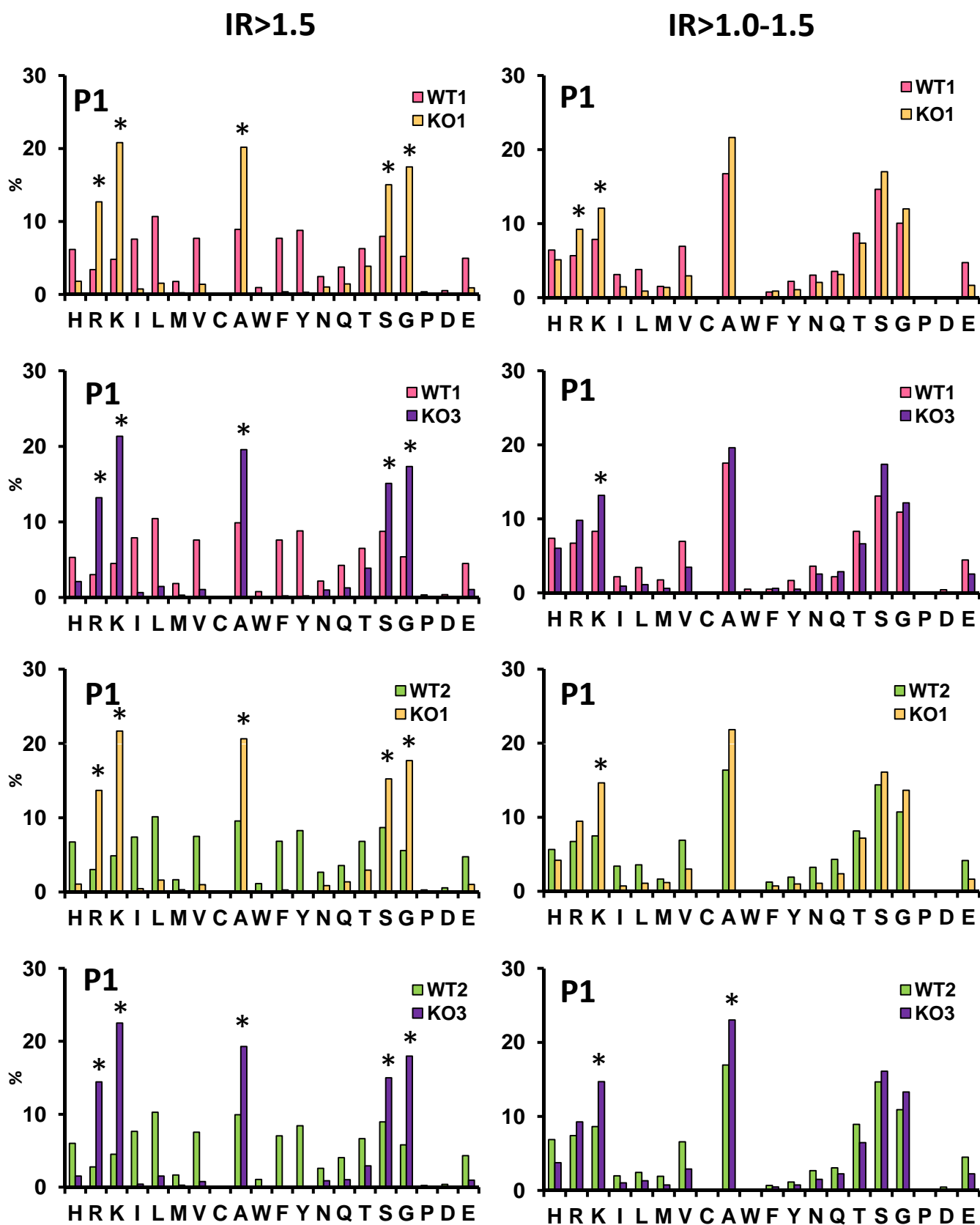
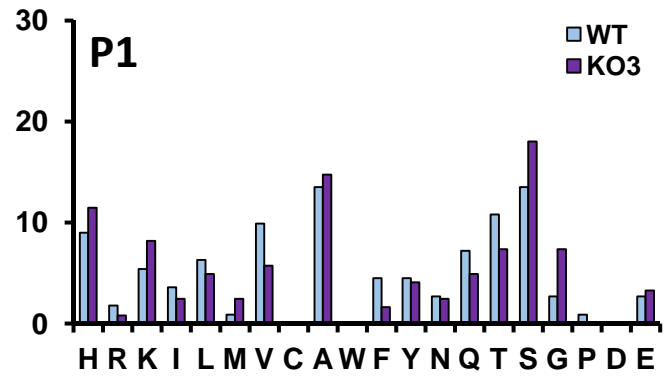
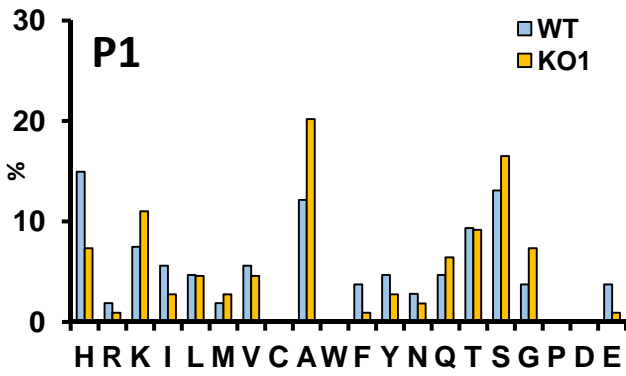
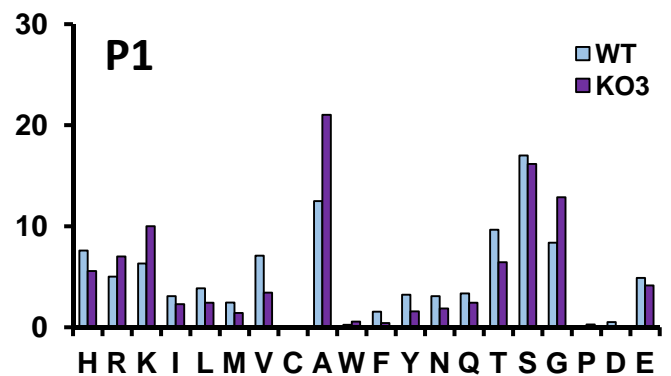
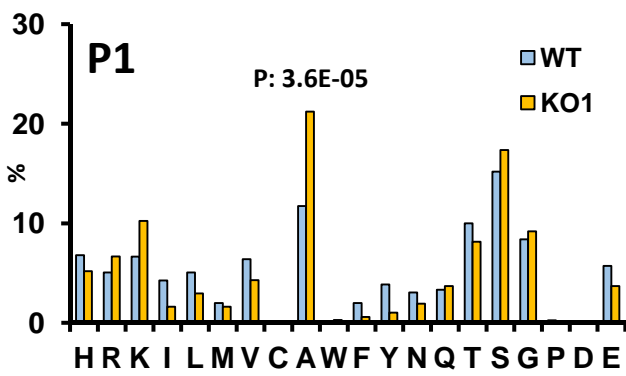


Figure S7

8-mers



9-mers



10-mers

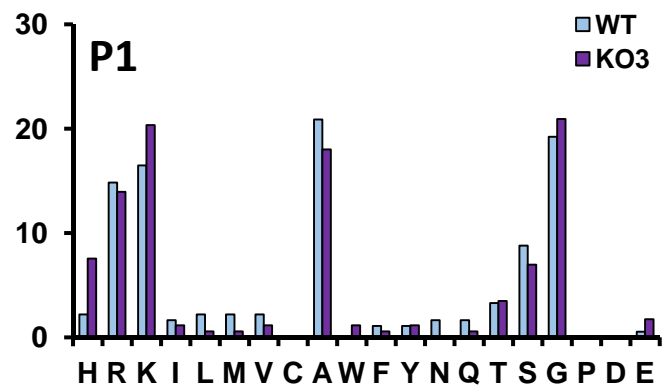
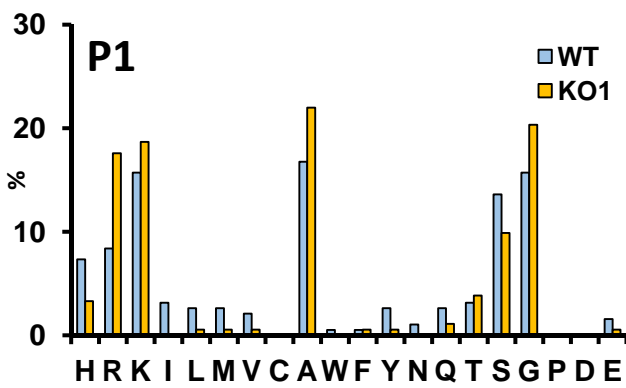


Figure S8

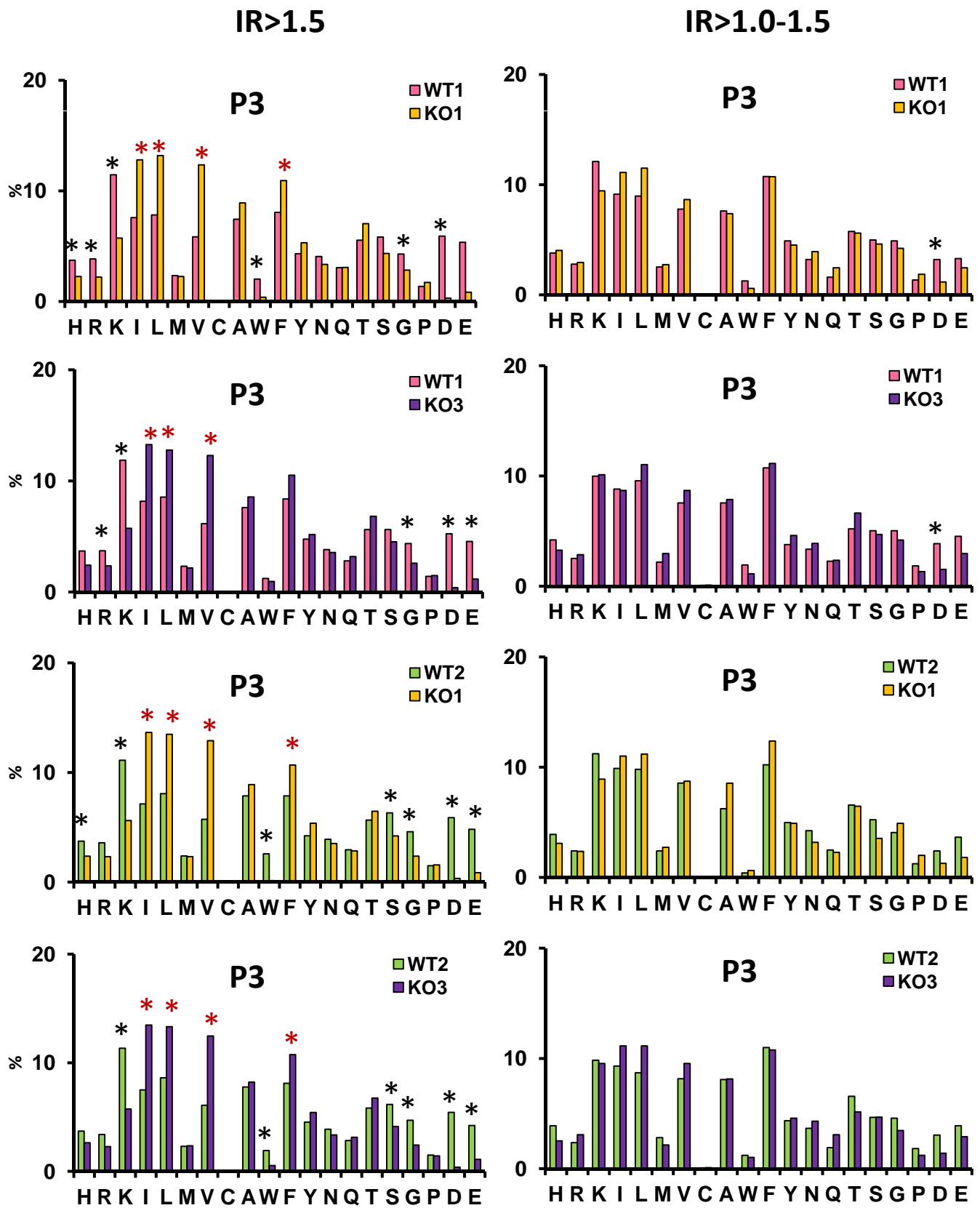
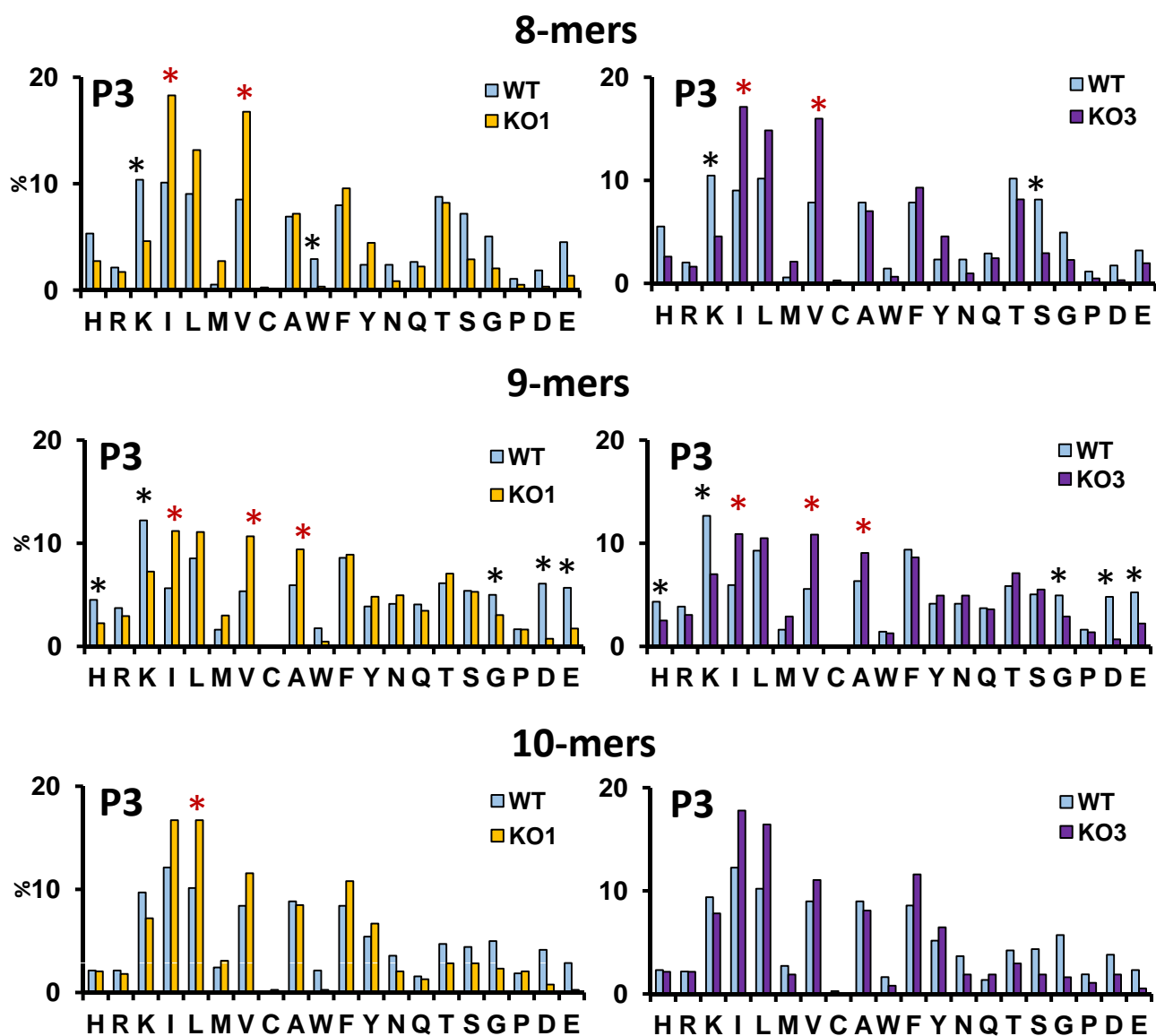


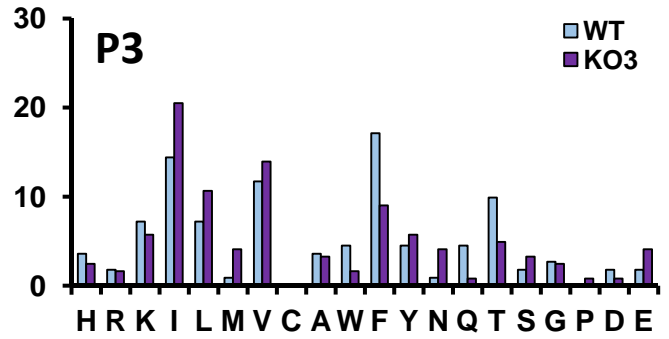
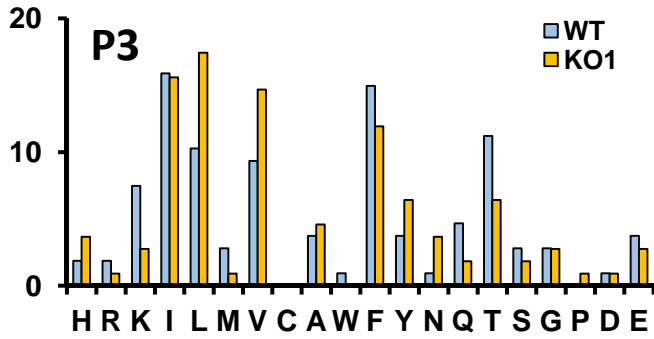
Figure S9



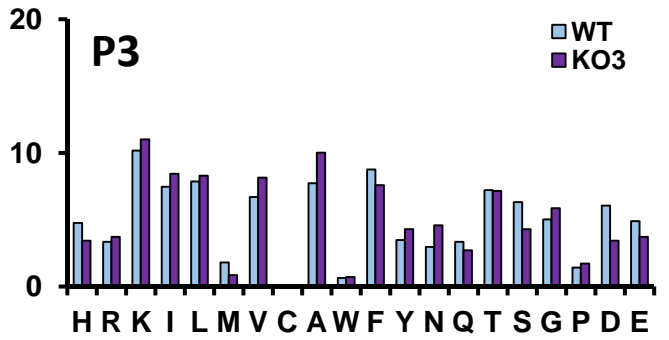
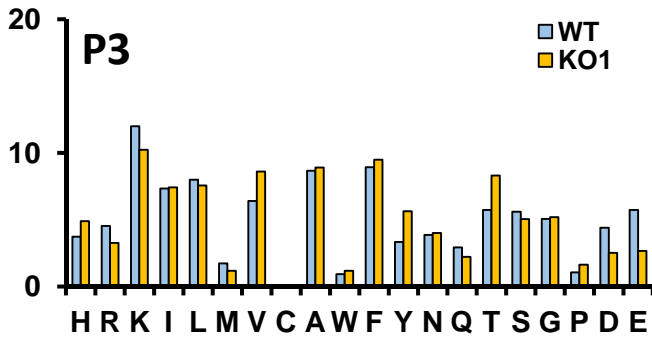
	8-mers		9-mers		10-mers	
	KO1	KO3	KO1	KO3	KO1	KO3
H	NS	NS	1.3E-03	0.036	NS	NS
K	0.018	0.015	1.6E-06	3.0E-08	NS	NS
I	0.015	0.016	3.7E-09	2.8E-08	NS	NS
L	NS	NS	NS	NS	0.045	NS
V	7.7E-03	9.8E-03	7.9E-09	1.7E-08	NS	NS
A	NS	NS	6.8E-04	0.023	NS	NS
W	0.039	NS	2.2E-03	NS	NS	NS
S	NS	0.011	NS	NS	NS	NS
G	NS	NS	0.032	0.020	NS	NS
D	NS	NS	4.9E-20	3.9E-14	NS	NS
E	NS	NS	3.6E-10	1.0E-05	NS	NS

Figure S10

8-mers



9-mers



10-mers

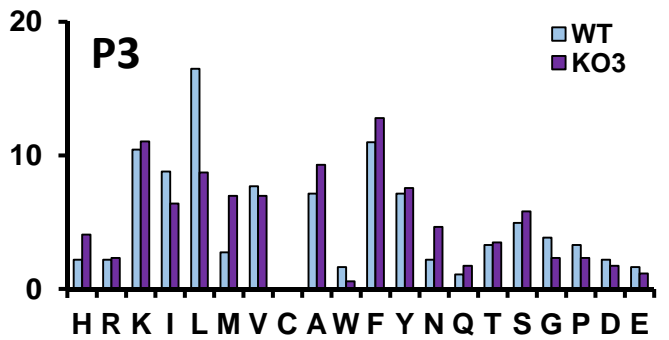
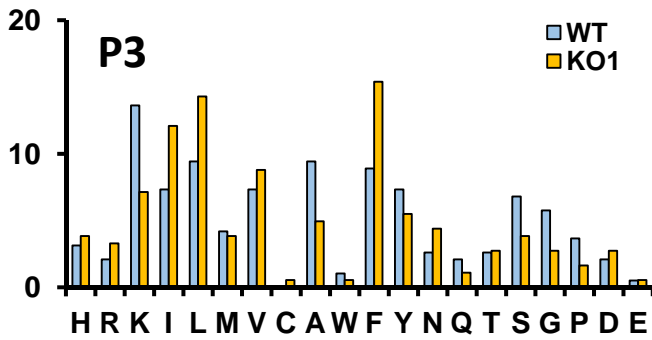


Figure S11

