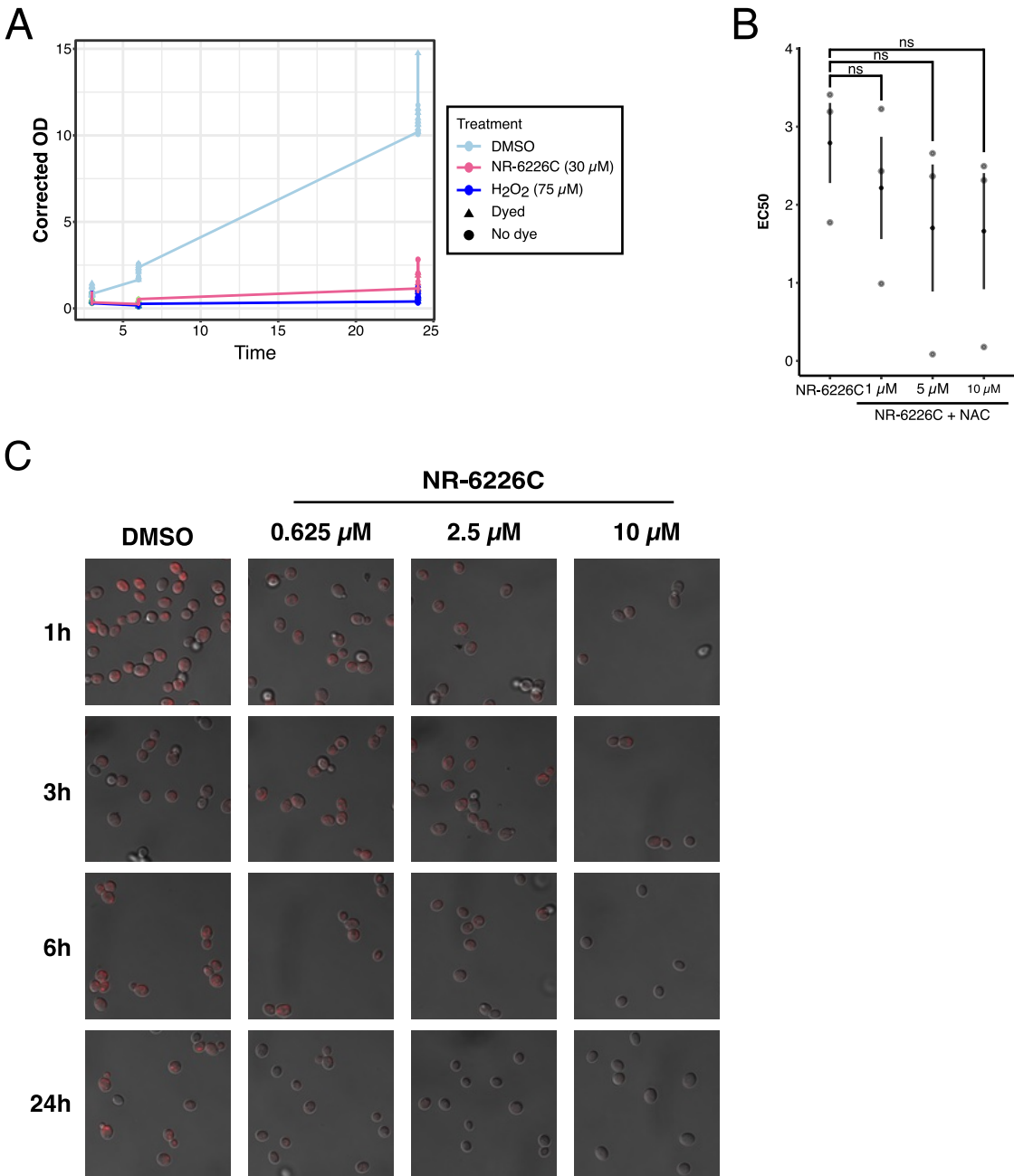


Supplemental Figure 6



Supplemental Figure S6. A, Growth curves of *C. glabrata* cells pre-loaded with the H_2DCFDA and then treated with 0.05% DMSO, 30 μM NR-6226C, or 75 μM H_2O_2 . Cell proliferation was measured and corrected using OD_{600} . **B**, EC_{50} values of *C. glabrata* cells treated with 26C alone within a concentration range of 0.78 μM -100 μM , or with NR-6226C in combination with 1 μM , 5 μM or 10 μM N-Acetyl-L-Cysteine (NAC). Samples were normalized to DMSO controls, followed by EC_{50} estimation. Statistical significance was calculated using one-way ANOVA and Tukey's HSD for post hoc analysis. **C**, *C. glabrata* cells were treated with DMSO, 0.625 μM , 2.5 μM or 10 μM NR-6226C for 6 and 24 hrs, after which they were loaded with MitoTracker and imaged using a Zeiss LSM 710 microscope. Representative images of random microscopic fields are shown. **D**, *C. glabrata* cells were treated with 0.05 % DMSO, 0.625 μM , 2.5 μM , or 10 μM NR-6226C for 24 hours, then measured for $\text{OD}_{600\text{nm}}$. Statistical analysis was performed using one-way ANOVA and Tukey's HSD for post hoc analysis. *** $P \leq 0.001$; ** $P \leq 0.01$; ns, not significant; $n=3$.