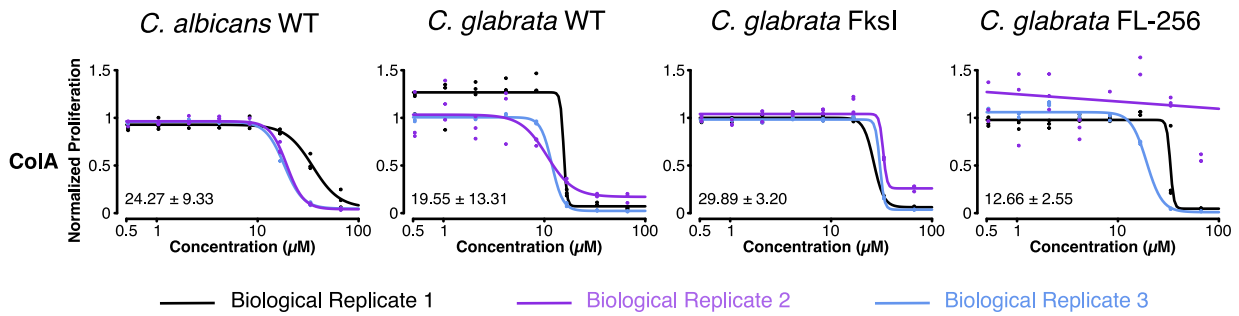
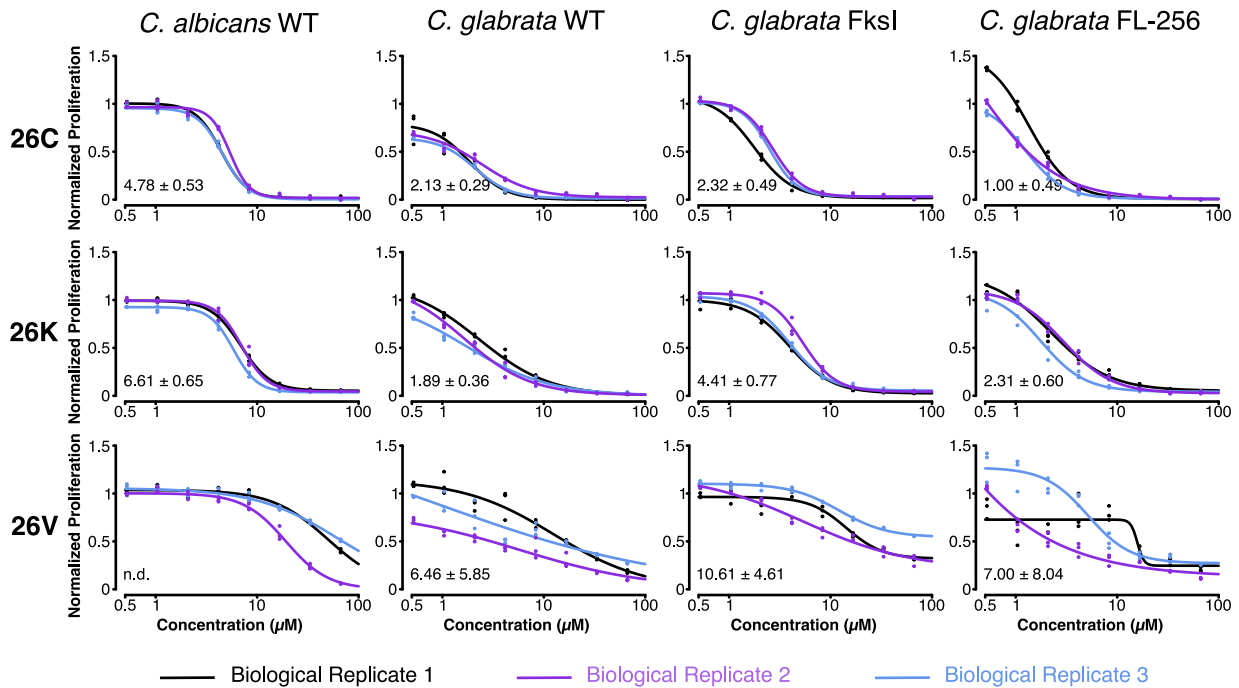


Supplemental Figure 3

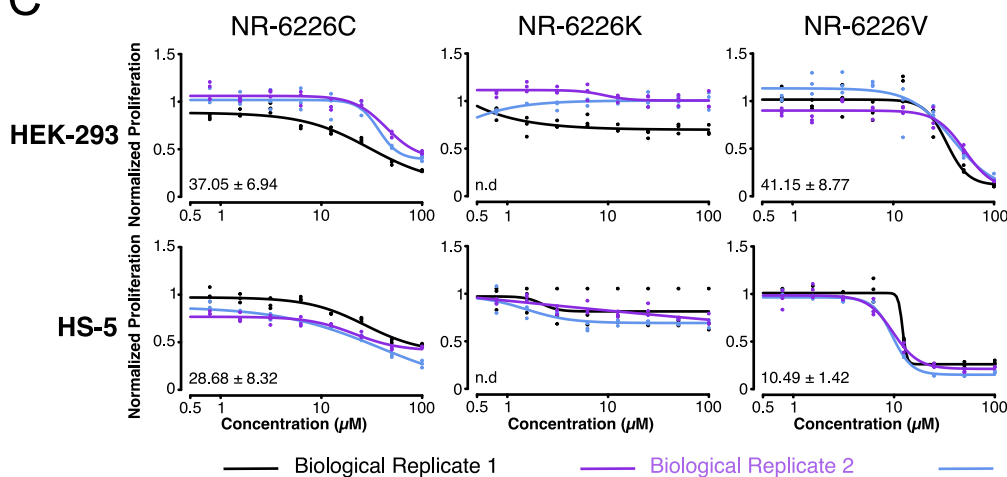
A



B



C



Supplemental Figure S3. A, B, Proliferation curves and EC₅₀ values of *Candida* spp treated for 24 hrs with either Collismycin A (A) or with 26C, 26K, 26V (B). Cell growth was measured using OD₆₀₀. **C,** Proliferation curves and EC₅₀ values of HEK-293 and HS-5 cells after treatment for 24 hrs with either 26C, 26K, or 26V. Closed circles indicate technical replicates, lines indicate biological replicates. EC₅₀ values were calculated as described in Figure 2C.