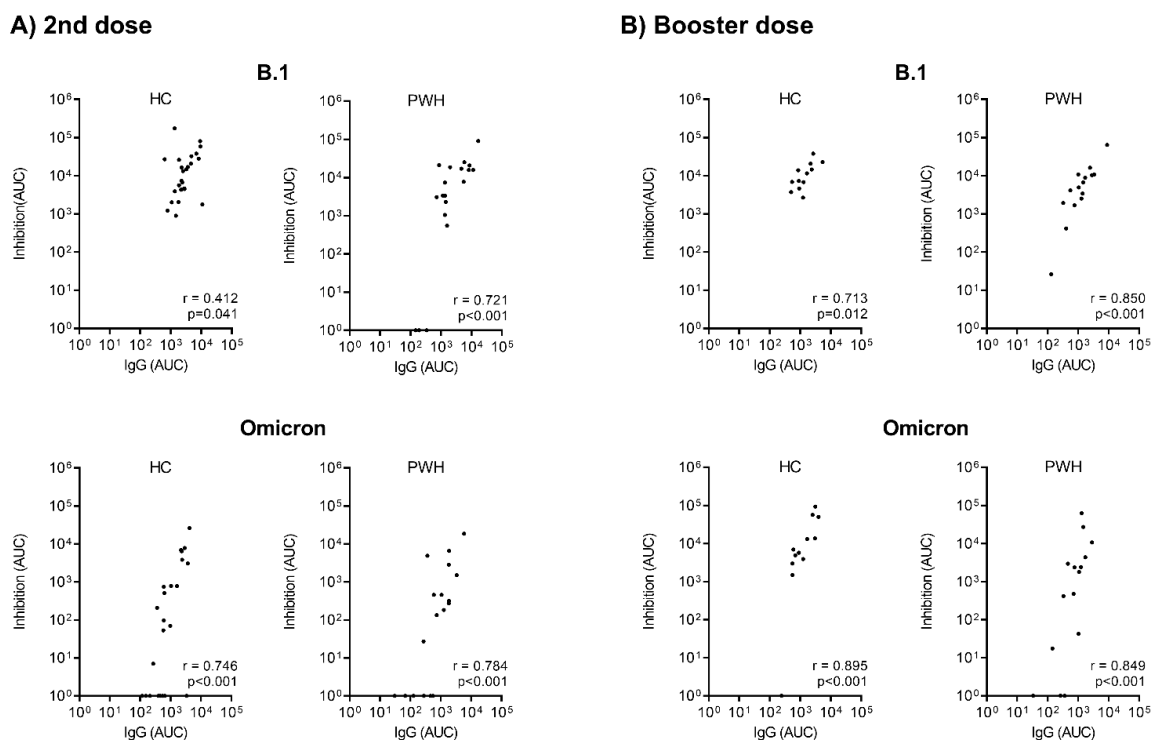


Supplementary Figure S1. Correlation between plasma IgG antibody levels against SARS-CoV-2 S protein (B.1 lineage and Omicron variant) and its capacity to inhibit the ACE2 receptor-S protein interaction in healthy controls and people with HIV after the second dose (A) and booster dose (B).

Statistics: Correlation analysis was performed using the Spearman test.

Abbreviations: AUC, the area under the curve; IgG, anti-SARS-CoV-2 S IgG; ACE2, angiotensin-converting enzyme 2; HC, healthy controls; PWH, people with HIV.



Supplementary Figure S2. Rates of PWH non-responders in the inhibition of the ACE2-S interaction (AUC = 0), according to SARS-CoV-2 variants, after the second dose and the booster dose of the COVID-19 vaccine.

Statistics: P-values were calculated using the Chi-square test.

