

Supplementary Data

SUPPLEMENTARY FIGURE

Cardiomyocyte calcineurin is required for the onset and progression of cardiac hypertrophy and fibrosis in adult mice

Sara Martínez-Martínez PhD^{a,b,†}, Noelia Lozano-Vidal PhD^{a,†}, María Dolores López-Maderuelo PhD^{a,b}, Luis Jesús Jiménez-Borreguero MD^{b,c}, Ángel Luis Armesilla PhD^{b,d} and Juan Miguel Redondo PhD^{a,b*}.

^aGene regulation in cardiovascular remodeling and inflammation group, Centro Nacional de Investigaciones Cardiovasculares Carlos III (CNIC), Madrid, Spain

^bCentro de Investigaciones Biomédicas en RED en Enfermedades Cardiovasculares (CIBERCV), Spain.

^cHospital de La Princesa, Madrid, Spain

^dResearch Institute in Healthcare Science, School of Pharmacy, Faculty of Science and Engineering, University of Wolverhampton, Wolverhampton, United Kingdom

[†]S. Martínez-Martínez and N. Lozano-Vidal contributed equally to this work.

* Corresponding author:

Dr Juan Miguel Redondo,

Gene regulation in cardiovascular remodeling and inflammation group,

Centro Nacional de Investigaciones Cardiovasculares Carlos III (CNIC),

Melchor Fernández Almagro 3, 28029 Madrid, Spain.

E-mail: jmredondo@cnic.es

Tel: (+34) 91 453 1200

Fax: (+34) 91 453 1265

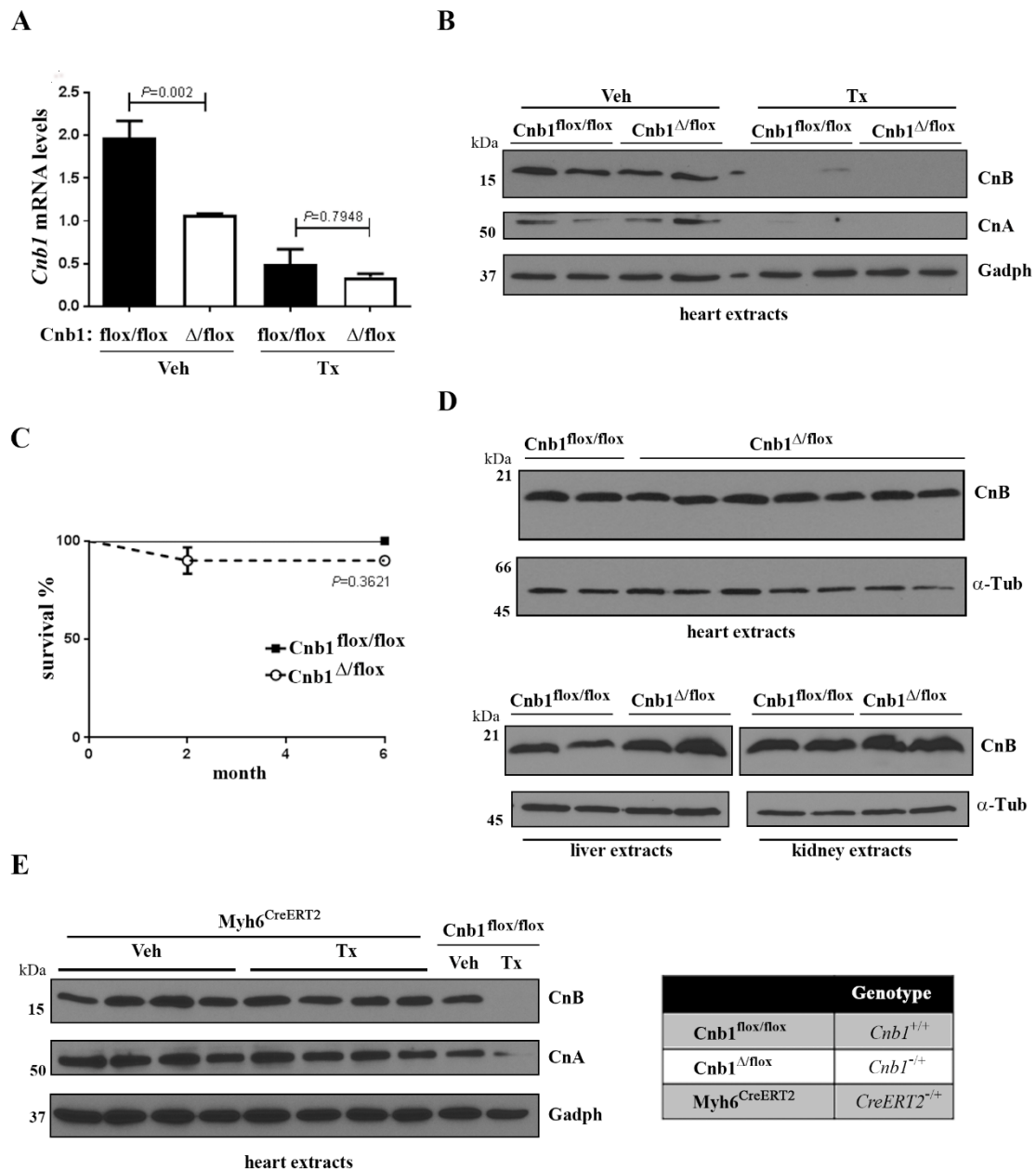


Figure S1. Characterization of $Cnb1$ -flox^{Myh6} mice. (A) Analysis of $Cnb1$ mRNA expression by qPCR in hearts of $Cnb1^{flox/flox}$; $Myh6^{CreERT2}$ and $Cnb1^{\Delta/flox}$; $Myh6^{CreERT2}$ mice treated with vehicle (Veh) or 4-hydroxy tamoxifen (Tx). Data are means \pm SEM (n=2-4 mice/ group). Data were analyzed by one-way ANOVA with a post hoc Tukey comparison test, the adjusted P values are shown. (B) Western blot analysis of CnB and CnA protein expression in hearts of $Cnb1^{flox/flox}$; $Myh6^{CreERT2}$ and $Cnb1^{\Delta/flox}$; $Myh6^{CreERT2}$ mice treated with vehicle (Veh) or 4-hydroxy tamoxifen (Tx); n=2 mice/ group. Gadph was determined as a loading control. (C) Survival curves of $Cnb1^{flox/flox}$ mice (n= 8) and $Cnb1^{\Delta/flox}$ mice (n= 20); P value by log-rank (Mantel–Cox) test. (D) Western blot analysis of CnB protein expression in different tissues of $Cnb1^{flox/flox}$ and $Cnb1^{\Delta/flox}$ mice without induced Cre activation. Levels of α -Tubulin (α -Tub) were determined as a loading control. (E) Western blot analysis of CnB and CnA protein expression in hearts of $Cnb1^{+/+}$; $Myh6^{CreERT2}$ mice ($Myh6^{CreERT2}$) treated with Veh or Tx; n=4 mice/ group. Gadph was determined as a loading control. Controls of CnB deletion were a $Cnb1^{flox/flox}$; $Myh6^{CreERT2}$ mouse treated with Veh and another $Cnb1^{flox/flox}$; $Myh6^{CreERT2}$ mouse treated with Tx. The table illustrates the $Cnb1$ genotype of the mice used in this study.