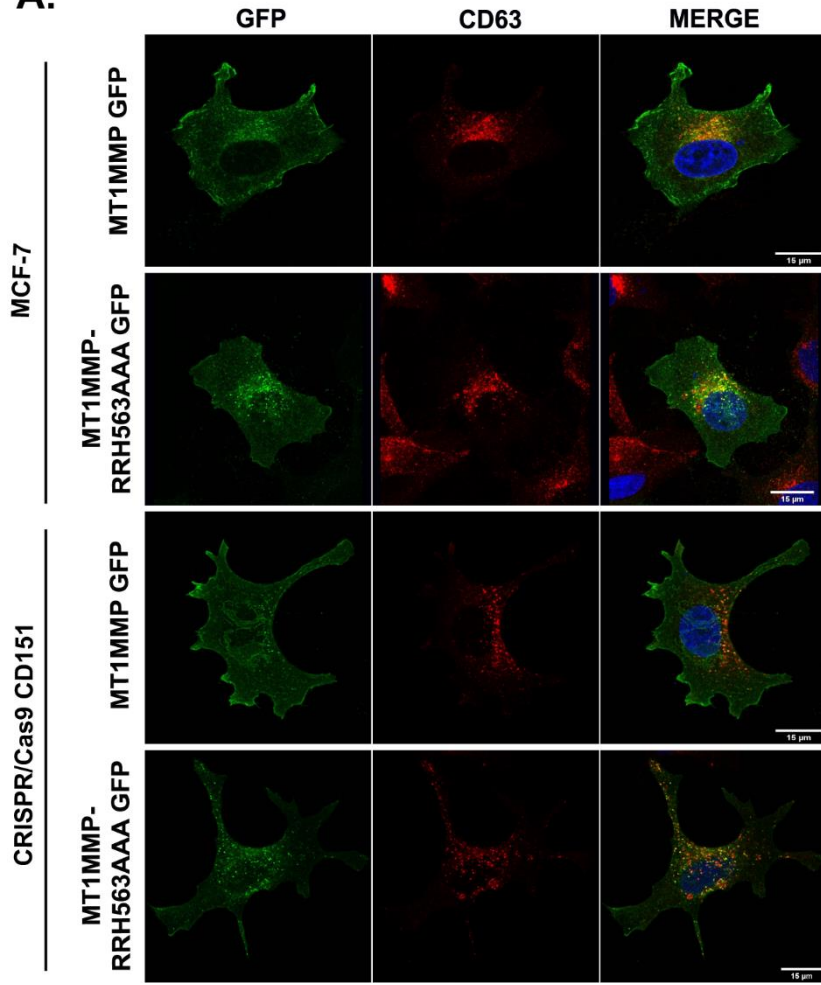
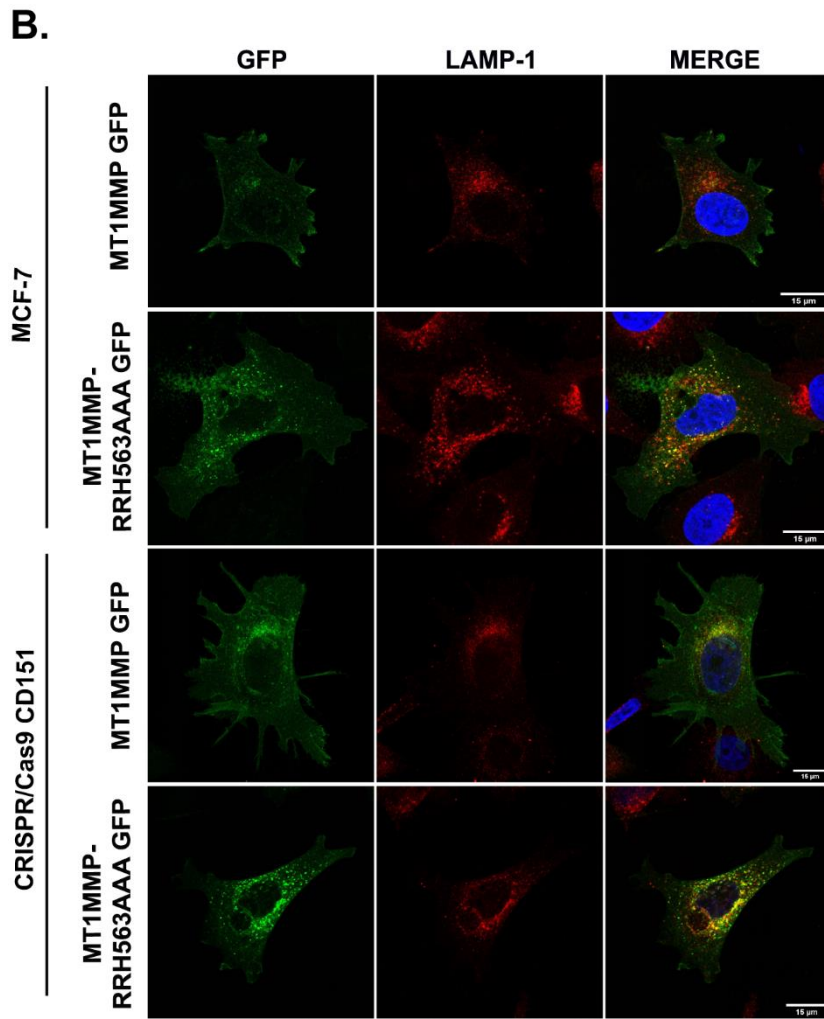


**Figure S1.** MCF-7 cells were transfected with mEGFP-tagged MT1-MMP constructs and plated onto 20  $\mu\text{g}/\text{mL}$  collagen I-coated coverslips, fixed and labeled with anti-EEA1 (A), anti-CD63 (B) or anti-LAMP-1 (C) in red. Bars 15  $\mu\text{m}$ .

**A.**





**Figure S2.** MCF-7 wt or CRISPR/Cas9 CD151 cells were transfected with mEGFP-tagged MT1-MMP constructs (wt or RRH563AAA) and plated onto 20 $\mu$ g/ml collagen I-coated coverslips, fixed and labeled with anti-CD63 (**A**) or anti-LAMP-1 (**B**) in red. Bars 15  $\mu$ m.