

CHEMISTRY

A **European** Journal

Supporting Information

© Copyright Wiley-VCH Verlag GmbH & Co. KGaA, 69451 Weinheim, 2014

Phosphatidylcholine-Coated Iron Oxide Nanomicelles for In Vivo Prolonged Circulation Time with an Antibiofouling Protein Corona

Hugo Groult,^[a] Jesús Ruiz-Cabello,^[a, d] Ana Victoria Lechuga-Vieco,^[a] Jesús Mateo,^[a] Marina Benito,^[a] Izaskun Bilbao,^[a] María Paz Martínez-Alcázar,^[b] Juan. Antonio Lopez,^[c] Jesús Vázquez,^[c] and Fernando F. Herranz^{*[a]}

chem_201404221_sm_miscellaneous_information.pdf

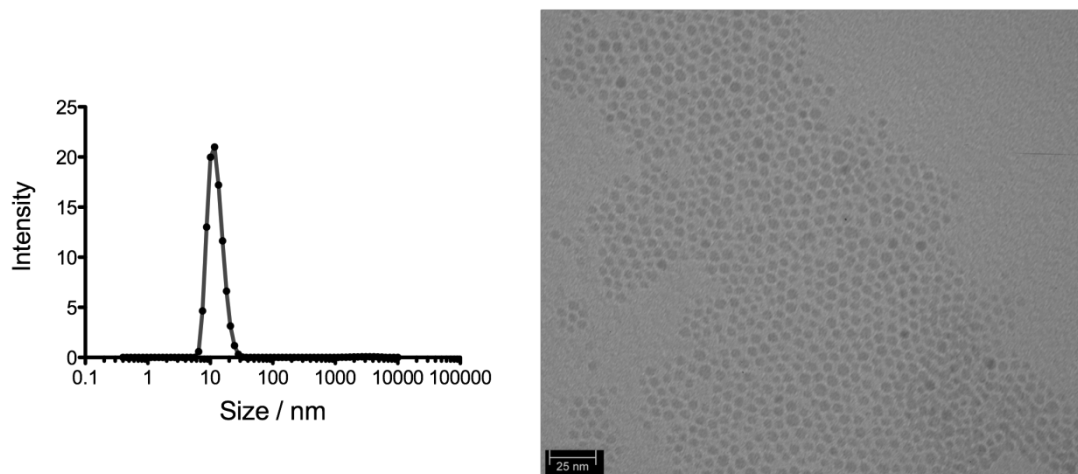


Fig. S1. Hydrodynamic size of OA Fe₃O₄ NPs and TEM image of OA Fe₃O₄ nanoparticles, (scale bar, 25 nm).

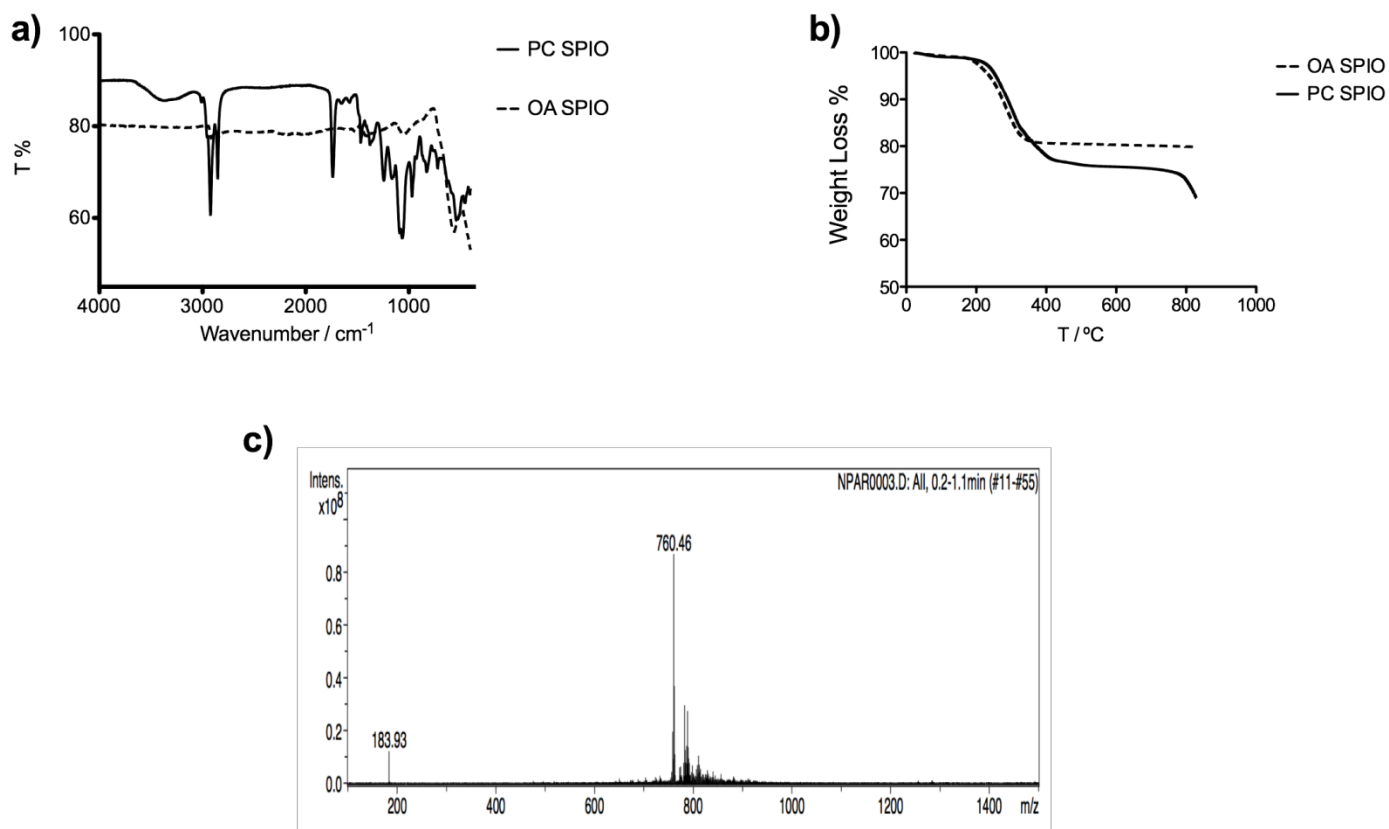


Fig. S2. (a) FTIR spectra of OA Fe₃O₄ NPs and PC SPION. (b) TGA of OA Fe₃O₄ NPs and PC SPION. (c) Mass spectrometry of PC SPION.

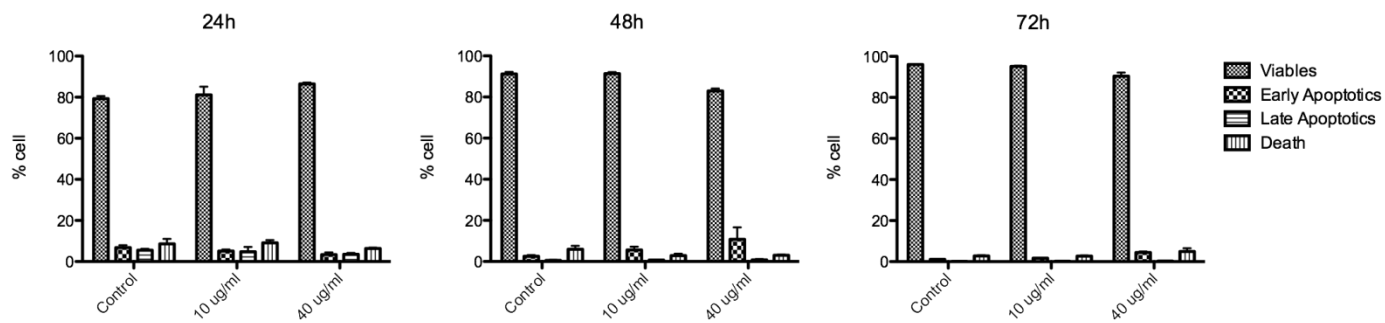


Fig. S3. Relative proportions (%) of viable, early apoptotic, late apoptotic and dead cell populations of MEFs incubated with PC SPION (at $10 \mu\text{g}\cdot\text{ml}^{-1}$ and $40 \mu\text{g}\cdot\text{ml}^{-1}$ iron concentrations; 24, 48, 72 hours).

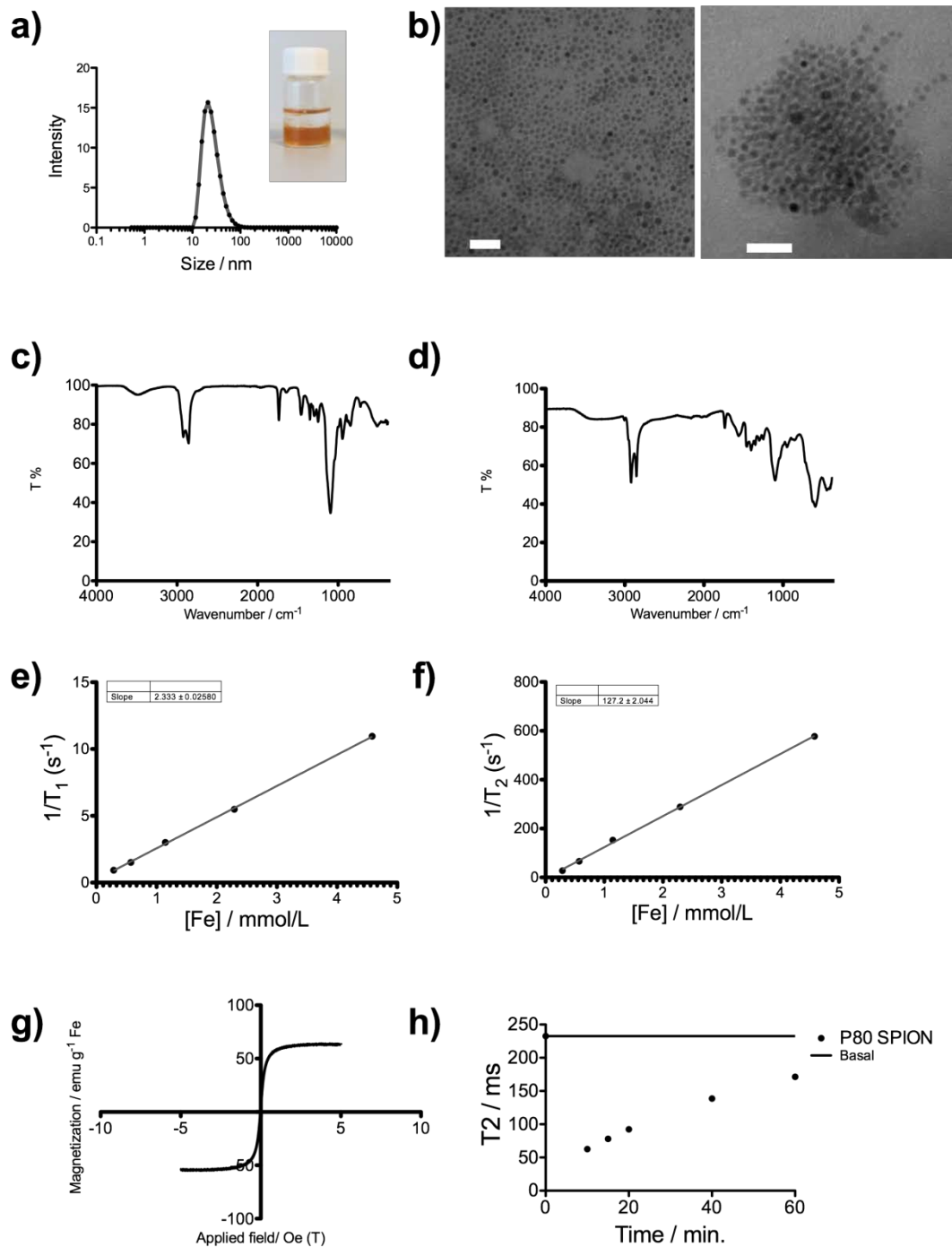


Figure S4. Characterization of the control P80 SPION. (a) Hydrodynamic size (inset: photo of a 1:1 mixture of hexane/P80 SPION in water). (b) TEM images; scale bars, 30 nm and 25 nm (b2). (c) FTIR spectra of P80. (d) FTIR spectra of P80 SPION. (e) Plot of the longitudinal ($1/R_1$) and (f) transverse ($1/R_2$) relaxation rates of P80 SPION against iron concentration. (g) Magnetization curves of these nanomicelles at 298 K. (h) T2 relaxation times in rat blood samples after i.v.a. of P80 SPION over time plotted against the T2 baseline value.

Table S1. Coronal proteins with a relative % weight > 0.6% that were significantly more abundant (quotient of relative % weight > 1.25) in (a) PC SPION at 15 min incubation time, and (b) P80 SPION at 180 min incubation time.

a)

PC SPION at 15 min	relative % weight in PC corona	relative % weight in P80 corona	fold	classification
Apolipoprotein A-IV	1,96	1,50	1,31	Lipoprotein
Apolipoprotein A-I	1,72	1,31	1,31	Lipoprotein
Protein Cfh	1,57	0,47	3,37	Regulator Complement
T-kininogen 1	1,05	0,84	1,25	Acute phase
Protein Dsp	1,05	0,28	3,74	Cellular junction
Ig gamma-2B chain C	0,81	0,65	1,24	Immunoglobulin
Alpha-1B-glycoprotein	0,76	0,47	1,63	Lipoprotein
Plasminogen	0,72	0,47	1,53	Coagulation inhibitor
Oxidation resistance protein 1	0,62	0,19	3,32	Stress response

b)

P80 SPION at 180 min	relative % weight in P80 corona	relative % weight in PC corona	fold	classification
Transferrin receptor protein	1,75	1,28	1,37	Endocytosis
Thyroglobulin	1,46	0,90	1,62	Interaction with Heat shock
Clathrin heavy chain	1,10	1,17	1,22	Endocytosis / cytoplasmic vehicle
Cytoplasmic dynein 1 heavy chain	1,10	0,85	1,29	Degradation / Transport

Major vault protein	0,94	0,37	2,95	Transport
Heat shock cognate protein	0,77	0,69	1,35	Degradation/ Transport
Band 3 anion transport protein	0,61	0,48	1,61	Transport
Integrin	0,61	0,48	1,27	Coagulation

Table S2. Proteins with a relative % weight >0.7 % in the corona of the PC SPION at 15 min incubation which showed the strongest decreases in relative % weight over time (quotient of relative % weight between 180 and 15 min < 0.8). Proteins in bold are those already presented in Table 2.

PC SPION	relative % weight at 15 min	relative % weight at 180 min	Relative fold decrease
Serum albumin	2,67	1,33	0,50
Serotransferrin	2,19	1,17	0,53
Apolipoprotein A-IV	1,96	1,54	0,79
Apolipoprotein A-I	1,72	0,90	0,53
Protein Cfh	1,57	0,37	0,24
Hemopexin	1,24	0,64	0,51
Murinoglobulin-1	1,05	0,74	0,71
Haptoglobin	1,05	0,59	0,56
T-kininogen	1,05	0,32	0,30
Ig gamma-2B chain C region	0,81	0,64	0,79
Fibrinogen-like 2	0,81	0,53	0,66
Alpha-1B-glycoprotein	0,76	0,37	0,49
Plasminogen	0,72	0,27	0,37

Row	La fasta	protein	description	XP2P80			PCNP		
				T15	T90	T180	T15	T90	T180
>sp Q71Q77MA5	APOB_RAT	APOB_RAT Apolipoprotein B-100 OS=Rattus norvegicus GN=ApoB PE=1 SV=1	88	62	110	167	183	139	
>sp Q6:Q63041	A1M_RAT	A1M_RAT Alpha-1-macroglobulin OS=Rattus norvegicus GN=A1m PE=1 SV=1	42	52	61	66	72	50	
>sp P01P01026	CO3_RAT	CO3_RAT Complement C3 OS=Rattus norvegicus GN=C3 PE=1 SV=3	32	43	49	58	62	50	
>sp R14P14046	A1I3_RAT	A1I3_RAT Alpha-1-inhibitor 3 OS=Rattus norvegicus GN=A1I3 PE=1 SV=1	32	42	44	50	56	37	
>tr G3V G3V852	G3V852_RAT	G3V852_RAT Protein Tln1 OS=Rattus norvegicus GN=Tln1 PE=4 SV=1	29	31	84	64	76	58	
>tr Q5E Q5EBC0	Q5EBC0_RAT	Q5EBC0_RAT Inter alpha-trypsin inhibitor, heavy chain 4 OS=Rattus norvegicus	28	24	29	39	38	36	
>sp Q9S Q99376	TFR1_RAT	TFR1_RAT Transferrin receptor protein 1 (Fragment) OS=Rattus norvegicus	26	20	43	28	27	24	
>tr COJF COJPT7	COJPT7_RAT	COJPT7_RAT Filamin alpha OS=Rattus norvegicus GN=Flna PE=2 SV=1	26	11	56	33	44	38	
>sp P02P02770	ALBU_RAT	ALBU_RAT Serum albumin OS=Rattus norvegicus GN=Alb PE=1 SV=2	25	28	31	56	60	25	
>sp P12P12346	TRFE_RAT	TRFE_RAT Serotransferrin OS=Rattus norvegicus GN=TF PE=1 SV=3	24	28	35	46	53	22	
>sp P20P20760	IGG2A_RAT	IGG2A_RAT Ig gamma-2A chain C region OS=Rattus norvegicus GN=Igg-2a Pf	20	17	24	27	29	25	
>tr F1LF F1LPW0	F1LPW0_RAT	F1LPW0_RAT Uncharacterized protein (Fragment) OS=Rattus norvegicus PE=	19	18	23	26	25	19	
>sp P06P06238	A2MG_RAT	A2MG_RAT Alpha-2-macroglobulin OS=Rattus norvegicus GN=A2m PE=2 SV=	17	24	21	27	27	23	
>sp P08P08649	CO4_RAT	CO4_RAT Complement C4 OS=Rattus norvegicus GN=C4 PE=1 SV=3	17	20	27	25	33	24	
>sp Q6:Q62930	CO9_RAT	CO9_RAT Complement component C9 OS=Rattus norvegicus GN=C9 PE=2 SV	17	13	22	21	20	18	
>sp P02P02651	APOA4_RAT	APOA4_RAT Apolipoprotein A-IV OS=Rattus norvegicus GN=Apoa4 PE=2 SV=	16	10	24	41	45	29	
>sp P06P06866	HPT_RAT	HPT_RAT Haptoglobin OS=Rattus norvegicus GN=Hp PE=1 SV=3	16	10	15	22	23	11	
>sp Q0:Q03626	MUG1_RAT	MUG1_RAT Murinoglobulin-1 OS=Rattus norvegicus GN=Mug1 PE=2 SV=1	16	16	16	22	23	14	
>sp P02P02650	APOE_RAT	APOE_RAT Apolipoprotein E OS=Rattus norvegicus GN=ApoE PE=1 SV=2	14	9	14	19	22	18	
>sp P04P04639	APOA1_RAT	APOA1_RAT Apolipoprotein A-I OS=Rattus norvegicus GN=Apoa1 PE=1 SV=2	14	13	18	36	34	17	
>sp P13P13635	CERU_RAT	CERU_RAT Ceruloplasmin OS=Rattus norvegicus GN=Cp PE=1 SV=3	14	19	21	21	23	18	
>sp P17P17475	A1AT_RAT	A1AT_RAT Alpha-1-antitrypsin OS=Rattus norvegicus GN=Serpina1 PE=1	14	21	14	14	16	12	
>sp P04P04937	FINC_RAT	FINC_RAT Fibronectin OS=Rattus norvegicus GN=Fn1 PE=1 SV=2	13	19	21	29	26	23	
>sp P06P06882	THYG_RAT	THYG_RAT Thyroglobulin OS=Rattus norvegicus GN=Tg PE=1 SV=4	12	18	36	18	32	17	
>sp P20P20059	HEMO_RAT	HEMO_RAT Hemopexin OS=Rattus norvegicus GN=Hpx PE=1 SV=3	12	16	17	26	28	12	
>sp Q6:Q62812	MYH9_RAT	MYH9_RAT Myosin-9 OS=Rattus norvegicus GN=Myh9 PE=1 SV=3	12	8	38	11	22	34	
>sp P05P05545	SPA3K_RAT	SPA3K_RAT Serine protease inhibitor A3K OS=Rattus norvegicus GN=Serpina	11	14	10	13	16	13	
>tr D3Z D3ZAC0	D3ZAC0_RAT	D3ZAC0_RAT Protein Itga2b OS=Rattus norvegicus GN=Itga2b PE=2 SV=2	11	8	18	18	17	13	
>tr G3V G3V7P2	G3V7P2_RAT	G3V7P2_RAT Fibrinogen-like 2 OS=Rattus norvegicus GN=Fgl2 PE=4 SV=1	11	5	9	17	14	10	
>sp P09P09006	SPA3N_RAT	SPA3N_RAT Serine protease inhibitor A3N OS=Rattus norvegicus GN=Serpina	10	17	17	15	19	16	
>sp P01P01048	KNT1_RAT	KNT1_RAT T-kininogen 1 OS=Rattus norvegicus GN=Map1 PE=1 SV=2	9	11	13	22	21	6	
>sp P05P05371	CLUS_RAT	CLUS_RAT Clusterin OS=Rattus norvegicus GN=Clu PE=1 SV=2	9	5	11	12	13	11	
>sp P23P23562	B3AT_RAT	B3AT_RAT Band 3 anion transport protein OS=Rattus norvegicus GN=Slc4a1	8	6	15	9	9	7	
>sp P55P55159	PON1_RAT	PON1_RAT Serum paraoxonase/arylesterase 1 OS=Rattus norvegicus GN=Po	8	7	14	13	12	12	
>sp P63P63018	HSP7C_RAT	HSP7C_RAT Heat shock cognate 71 kDa protein OS=Rattus norvegicus GN=H	8	4	19	13	13	9	
>tr B2G B2GV89	B2GV89_RAT	B2GV89_RAT Fermt3 protein OS=Rattus norvegicus GN=Fermt3 PE=2 SV=1	8	4	20	10	13	15	
>tr F1M F1M0U4	F1M0U4_RAT	F1M0U4_RAT RCG21092 OS=Rattus norvegicus GN=rCG_21092 PE=4 SV=2	8	8	10	11	10	10	
>sp P04P04276	VTDB_RAT	VTDB_RAT Vitamin D-binding protein OS=Rattus norvegicus GN=Gc PE=1 SV=	7	6	8	14	22	5	
>sp P10P10959	EST1C_RAT	EST1C_RAT Carboxylesterase 1C OS=Rattus norvegicus GN=Ces1c PE=1 SV=3	7	11	13	11	11	6	
>sp P14P14659	HSP72_RAT	HSP72_RAT Heat shock-related 70 kDa protein 2 OS=Rattus norvegicus GN=I	7	3	7	6	8	8	
>sp P20P20761	IGG2B_RAT	IGG2B_RAT Ig gamma-2B chain C region OS=Rattus norvegicus GN=Igh-1a Pf	7	8	13	17	17	12	
>sp Q7:Q794F9	4F2_RAT	4F2_RAT 4F2 cell-surface antigen heavy chain OS=Rattus norvegicus GN=Slc	7	5	10	7	8	7	
>sp Q9S Q99P58	HRG_RAT	HRG_RAT Histidine-rich glycoprotein OS=Rattus norvegicus GN=Hrg PE=2 SV	7	5	6	9	10	7	
>tr G3V G3V679	G3V679_RAT	G3V679_RAT Transferrin receptor protein 1 OS=Rattus norvegicus GN=Tfrc f	7	6	7	5	7	5	
>tr M0F M0RCF3	M0RCF3_RAT	M0RCF3_RAT Integrin beta OS=Rattus norvegicus GN=Itgb3 PE=3 SV=1	7	2	11	10	11	8	
>tr Q3K Q3KR94	Q3KR94_RAT	Q3KR94_RAT Protein Vtn OS=Rattus norvegicus GN=Vtn PE=2 SV=1	7	1	6	11	11	8	
>tr Q5X Q5X104	Q5X104_RAT	Q5X104_RAT Protein Stom OS=Rattus norvegicus GN=Stom PE=2 SV=1	7	4	11	6	6	8	
>sp P01P01835	KACB_RAT	KACB_RAT Ig kappa chain C region, B allele OS=Rattus norvegicus PE=1 SV=1	6	6	8	7	10	7	
>sp P20P20762	IGG2C_RAT	IGG2C_RAT Ig gamma-2C chain C region OS=Rattus norvegicus PE=2 SV=1	6	5	11	14	13	9	
>sp P31P31720	C1QA_RAT	C1QA_RAT Complement C1q subcomponent subunit A OS=Rattus norvegicus	6	3	4	8	8	4	
>sp Q6:Q63313	LBP_RAT	LBP_RAT Lipopolysaccharide-binding protein OS=Rattus norvegicus GN=Lbp	6	6	13	8	12	7	
>sp Q6:Q68FP1	GELS_RAT	GELS_RAT Gelsolin OS=Rattus norvegicus GN=Gsn PE=1 SV=1	6	6	7	8	5	4	
>tr Q5M Q5M775	Q5M775_RAT	Q5M775_RAT Protein Serpinc1 OS=Rattus norvegicus GN=Serpinc1 PE=2 SV=	6	6	10	8	12	11	
>sp P01P01836	KACA_RAT	KACA_RAT Ig kappa chain C region, A allele OS=Rattus norvegicus PE=1 SV=1	5	7	9	7	7	5	
>sp P02P02767	TTHY_RAT	TTHY_RAT Transthyretin OS=Rattus norvegicus GN=Ttr PE=1 SV=1	5	2	6	6	6	5	
>sp P05P05544	SPA3L_RAT	SPA3L_RAT Serine protease inhibitor A3L OS=Rattus norvegicus GN=Serpina	5	12	11	9	15	13	
>sp P11P11442	CLH1_RAT	CLH1_RAT Clathrin heavy chain 1 OS=Rattus norvegicus GN=Cltc PE=1 SV=3	5	3	27	6	10	16	
>sp P20P20767	LAC2_RAT	LAC2_RAT Ig lambda-2 chain C region OS=Rattus norvegicus PE=2 SV=1	5	4	5	8	9	6	
>sp P62P62738	ACTA_RAT	ACTA_RAT Actin, aortic smooth muscle OS=Rattus norvegicus GN=Acta2 PE=	5	9	13	9	10	10	
>sp P85P85108	TBB2A_RAT	TBB2A_RAT Tubulin beta-2A chain OS=Rattus norvegicus GN=Tubb2a PE=1 SV	5	7	12	6	8	8	
>sp P85P85972	VINC_RAT	VINC_RAT Vinculin OS=Rattus norvegicus GN=Vcl PE=1 SV=1	5	2	23	5	7	16	
>sp Q01Q01177	PLMN_RAT	PLMN_RAT Plasminogen OS=Rattus norvegicus GN=Plg PE=2 SV=2	5	5	8	15	17	5	
>sp Q6:Q64268	HEP2_RAT	HEP2_RAT Heparin cofactor 2 OS=Rattus norvegicus GN=Serpind1 PE=2 SV=	5	4	9	8	8	6	
>sp Q9:Q9EPH1	A1BG_RAT	A1BG_RAT Alpha-1B-glycoprotein OS=Rattus norvegicus GN=A1bg PE=2 SV=	5	6	8	16	13	7	
>sp Q9C Q9QX79	FETUB_RAT	FETUB_RAT Fetuin-B OS=Rattus norvegicus GN=Fetub PE=2 SV=2	5	6	2	9	9	3	
>tr E9P E9P5P1	E9P5P1_RAT	E9P5P1_RAT Protein Pltp OS=Rattus norvegicus GN=Pltp PE=2 SV=1	5	5	6	10	7	8	
>tr F1LZ F1LZ11	F1LZ11_RAT	F1LZ11_RAT Uncharacterized protein (Fragment) OS=Rattus norvegicus PE=	5		6	6	6	6	
>tr G3V G3V9R2	G3V9R2_RAT	G3V9R2_RAT Protein Cfh OS=Rattus norvegicus GN=Cfh PE=4 SV=1	5	4	5	33	37	7	
>tr M0R M0RA79	M0RA79_RAT	M0RA79_RAT Uncharacterized protein (Fragment) OS=Rattus norvegicus PE	5	3	7	11	9	7	
>tr Q5M Q5M878	Q5M878_RAT	Q5M878_RAT Serum amyloid A protein OS=Rattus norvegicus GN=Hps5 PE=	5	2	7	11	12	7	
>sp P01P01946	HBA_RAT	HBA_RAT Hemoglobin subunit alpha-1/2 OS=Rattus norvegicus GN=Hba1 PE	4	3	7	5	5	6	
>sp P02P02091	HBB1_RAT	HBB1_RAT Hemoglobin subunit beta-1 OS=Rattus norvegicus GN=Hbb PE=1	4	2	7	5	7	7	
>sp P04P04642	LDHA_RAT	LDHA_RAT L-lactate dehydrogenase A chain OS=Rattus norvegicus GN=Ldha	4	4	9	7	9	7	
>sp P04P04897	GNAI2_RAT	GNAI2_RAT Guanine nucleotide-binding protein G(i) subunit alpha-2 OS=	4		7	2	4	6	
>sp P14P14630	APOM_RAT	APOM_RAT Apolipoprotein M OS=Rattus norvegicus GN=Apom PE=1 SV=2	4	2	5	9	12	6	
>sp P20P20759	IGHG1_RAT	IGHG1_RAT Ig gamma-1 chain C region OS=Rattus norvegicus PE=1 SV=1	4	4	5	6	8	4	
>sp P29P29975	AQP1_RAT	AQP1_RAT Aquaporin-1 OS=Rattus norvegicus GN=Aqp1 PE=2 SV=4	4	1	4	2	1	1	
>sp P31P31722	C1QC_RAT	C1QC_RAT Complement C1q subcomponent subunit C OS=Rattus norvegicus	4	2	5	4	4	3	
>sp P60P60711	ACTB_RAT	ACTB_RAT Actin, cytoplasmic 1 OS=Rattus norvegicus GN=Actb PE=1 SV=1	4	5	10	9	11	9	
>sp P62P62963	PROF1_RAT	PROF1_RAT Profilin-1 OS=Rattus norvegicus GN=Pfn1 PE=1 SV=2	4	3	8	6	7	7	
>sp P68P68370	TBA1A_RAT	TBA1A_RAT Tubulin alpha-1A chain OS=Rattus norvegicus GN=Tuba1a PE=1	4	5	8	4	4	7	
>sp Q2F Q2PQA9	KINH_RAT	KINH_RAT Kinesin-1 heavy chain OS=Rattus norvegicus GN=Kif5b PE=1 SV=1	4	1	11	8	11	10	
>sp Q6:Q62667	MVP_RAT	MVP_RAT Major vault protein OS=Rattus norvegicus GN=Mvp PE=1 SV=4	4	3	23	6	6	13	
>sp Q6:Q62868	ROCK2_RAT	ROCK2_RAT Rho-associated protein kinase 2 OS=Rattus norvegicus GN=Roc1	4		11	3	6	7	
>sp Q9:Q9J58	MASP2_RAT	MASP2_RAT Mannan-binding lectin serine protease 2 OS=Rattus norvegicus	4	2	4	3	3	3	
>tr D3Z D3ZPI8	D3ZPI8_RAT	D3ZPI8_RAT Complement component 8, gamma polypeptide (Predicted), isc	4	1	6	5	6	5	
>tr F1LF F1LPR6	F1LPR6_RAT	F1LPR6_RAT Uncharacterized protein (Fragment) OS=Rattus norvegicus PE=	4	3	10	14	15	8	
>tr F1L F1LU21	F1LU21_RAT	F1LU21_RAT Uncharacterized protein (Fragment) OS=Rattus norvegicus PE=	4	2	4	8	7	5	

>tr F1M1F1M1R0	F1M1R0_RAT	F1M1R0_RAT Uncharacterized protein OS=Rattus norvegicus PE=4 SV=2	4	2	3	3	3	2
>tr G3V G3V667	G3V667_RAT	G3V667_RAT Integrin, alpha 6, isoform CRA_a OS=Rattus norvegicus GN=Itg	4	4	15	6	6	9
>tr G3V G3V6G1	G3V6G1_RAT	G3V6G1_RAT Immunoglobulin joining chain OS=Rattus norvegicus GN=Igj PE			3	5	5	1
>tr M0R M0R8G6	M0R8G6_RAT	M0R8G6_RAT Uncharacterized protein (Fragment) OS=Rattus norvegicus PE	4	4	4	5	4	4
>tr M0F M0R9U2	M0R9U2_RAT	M0R9U2_RAT Uncharacterized protein (Fragment) OS=Rattus norvegicus PE	4	1	2	4	7	2
>tr Q7T Q7T7P05	Q7T7P05_RAT	Q7T7P05_RAT Da1-24 OS=Rattus norvegicus GN=Cfb PE=2 SV=1	4	10	6	8	12	5
>sp Q54 Q54735	PDE5A_RAT	PDE5A_RAT cGMP-specific 3',5'-cyclic phosphodiesterase OS=Rattus norvegi	3	3	9	6	8	7
>sp P05 P05065	ALDOA_RAT	ALDOA_RAT Fructose-bisphosphate aldolase A OS=Rattus norvegicus GN=Al	3	2	6	1	1	3
>sp P06 P06685	AT1A1_RAT	AT1A1_RAT Sodium/potassium-transporting ATPase subunit alpha-1 OS=Rat	3		8	4	3	5
>sp P31 P31721	C1QB_RAT	C1QB_RAT Complement C1q subcomponent subunit B OS=Rattus norvegicu	3	3	8	4	4	5
>sp P48 P48199	CRP_RAT	CRP_RAT C-reactive protein OS=Rattus norvegicus GN=Crp PE=1 SV=1	3	4	5	6	7	4
>sp Q07 Q02759	LX12L_RAT	LX12L_RAT Arachidonate 12-lipoxygenase, leukocyte-type OS=Rattus norvege	3	1	9	3	3	7
>sp Q5 Q5XFX0	TAGL2_RAT	TAGL2_RAT Transgelin-2 OS=Rattus norvegicus GN=Tagln2 PE=1 SV=1	3	3	4	2	7	6
>sp Q6 Q63416	ITIH3_RAT	ITIH3_RAT Inter-alpha-trypsin inhibitor heavy chain H3 OS=Rattus norvegicu	3	9	9	6	7	6
>sp Q6 Q6P6T1	C1S_RAT	C1S_RAT Complement C1s subcomponent OS=Rattus norvegicus GN=C1s PE	3	6	8	4	7	5
>sp Q6 Q6P734	IC1_RAT	IC1_RAT Plasma protease C1 inhibitor OS=Rattus norvegicus GN=Serp1g PI	3	7	9	5	5	4
>sp Q8 Q811M5	CO6_RAT	CO6_RAT Complement component C6 OS=Rattus norvegicus GN=C6 PE=2 SV	3	5	10	11	13	13
>sp Q9 Q9WTS8	FCN1_RAT	FCN1_RAT Ficolin-1 OS=Rattus norvegicus GN=Fcn1 PE=2 SV=2	3	1	2	2	1	1
>tr B2R B2RYM3	B2RYM3_RAT	B2RYM3_RAT Inter-alpha trypsin inhibitor, heavy chain 1 (Predicted), isofor	3	10	6	7	7	8
>tr D3Z D3Z841	D3Z841_RAT	D3Z841_RAT Protein RGD1559732 OS=Rattus norvegicus GN=RGD1559732 I	3		2			
>tr D3Z D3ZJW6	D3ZJW6_RAT	D3ZJW6_RAT RCG21066 OS=Rattus norvegicus GN=RCG_21066 PE=4 SV=1	3	3	4	4	4	3
>tr D4A D4ACR1	D4ACR1_RAT	D4ACR1_RAT Uncharacterized protein OS=Rattus norvegicus PE=4 SV=2	3	1	1	4	2	2
>tr F1L F1LMV6	F1LMV6_RAT	F1LMV6_RAT Protein Dsp OS=Rattus norvegicus GN=Dsp PE=2 SV=1	3	16	16	22	15	19
>tr F1L F1LTD1	F1LTD1_RAT	F1LTD1_RAT Uncharacterized protein (Fragment) OS=Rattus norvegicus PE=	3		6	3	4	1
>tr F1L F1LVL4	F1LVL4_RAT	F1LVL4_RAT Uncharacterized protein OS=Rattus norvegicus GN=LOC100363	3	2	3	2	2	3
>tr F1L F1LWD0	F1LWD0_RAT	F1LWD0_RAT Uncharacterized protein (Fragment) OS=Rattus norvegicus PE=	3	4	4	6	6	5
>tr F1Y F1LYU3	F1LYU3_RAT	F1LYU3_RAT Uncharacterized protein (Fragment) OS=Rattus norvegicus PE=	3	2	2	2	2	2
>tr F7F F7F4S8	F7F4S8_RAT	F7F4S8_RAT Integrin beta OS=Rattus norvegicus GN=Itgb2 PE=3 SV=1	3	2	5	5	8	5
>tr G5A G5AP01	G5AP01_HETGA	G5AP01_HETGA 14-3-3 protein zeta/delta OS=Heterocephalus glaber GN=G'	3	3	4	2	2	4
>tr M0F M0R628	M0R628_RAT	M0R628_RAT Uncharacterized protein (Fragment) OS=Rattus norvegicus PE=	3		3	2	2	2
>tr M0F M0R692	M0R692_RAT	M0R692_RAT Uncharacterized protein (Fragment) OS=Rattus norvegicus PE=	3	2	2	4	4	2
>tr M0F M0R709	M0R709_RAT	M0R709_RAT Uncharacterized protein (Fragment) OS=Rattus norvegicus PE=	3	1	3	1	1	4
>tr M0F M0R816	M0R816_RAT	M0R816_RAT Uncharacterized protein OS=Rattus norvegicus PE=4 SV=1	3	1	3	3	3	3
>tr Q4K Q4KM75	Q4KM75_RAT	Q4KM75_RAT CD5 antigen-like OS=Rattus norvegicus GN=Cd5l PE=2 SV=1	3		3	4	8	3
>tr Q5M Q5M8C3	Q5M8C3_RAT	Q5M8C3_RAT Protein Serpina4 OS=Rattus norvegicus GN=Serpina4 PE=2 SV	3	5	9	5	6	6
>sp Q08 Q08619	F13A_RAT	F13A_RAT Coagulation factor XIII A chain OS=Rattus norvegicus GN=F13a1 P	2	2	7	1	5	5
>sp Q7C Q07257	STX7_RAT	STX7_RAT Syntaxin-7 OS=Rattus norvegicus GN=Stx7 PE=1 SV=4	2		4	1	1	2
>sp Q8 Q088775	EMB_RAT	EMB_RAT Embigin OS=Rattus norvegicus GN=Emb PE=1 SV=1	2		1	3	3	1
>sp P00 P00884	ALDOB_RAT	ALDOB_RAT Fructose-bisphosphate aldolase B OS=Rattus norvegicus GN=Al	2		3	3	3	4
>sp P01 P01015	ANGT_RAT	ANGT_RAT Angiotensinogen OS=Rattus norvegicus GN=Agt PE=1 SV=1	2	3	3	3	3	3
>sp P01 P01805	HVR01_RAT	HVR01_RAT Ig heavy chain V region IR2 OS=Rattus norvegicus PE=4 SV=1	2	1	3	2	3	2
>sp P02 P02764	A1AG_RAT	A1AG_RAT Alpha-1-acid glycoprotein OS=Rattus norvegicus GN=Orm1 PE=2	2	4	2	3	4	
>sp P04 P04764	ENOA_RAT	ENOA_RAT Alpha-enolase OS=Rattus norvegicus GN=Eno1 PE=1 SV=4	2	1	8		4	3
>sp P06 P06686	AT1A2_RAT	AT1A2_RAT Sodium/potassium-transporting ATPase subunit alpha-2 OS=Rat	2	1	6	2	2	3
>sp P08 P08932	KNT2_RAT	KNT2_RAT T-kininogen 2 OS=Rattus norvegicus PE=1 SV=2	2	3	5	4	5	2
>sp P08 P08934	KNG1_RAT	KNG1_RAT Kininogen-1 OS=Rattus norvegicus GN=Kng1 PE=2 SV=1	2	3	3	5	4	3
>sp P11 P11517	HBB2_RAT	HBB2_RAT Hemoglobin subunit beta-2 OS=Rattus norvegicus PE=1 SV=2	2	1	2	3	4	2
>sp P15 P15978	HA11_RAT	HA11_RAT Class I histocompatibility antigen, Non-RT1.A alpha-1 chain OS=R	2	1	2	1	1	1
>sp P16 P16391	HA12_RAT	HA12_RAT RT1 class I histocompatibility antigen, AA alpha chain OS=Rattus	2	2	3	2	2	1
>sp P24 P24090	FETUA_RAT	FETUA_RAT Alpha-2-HS-glycoprotein OS=Rattus norvegicus GN=Ahs2 PE=1 S	2	2	3	8	6	4
>sp P31 P31211	CBG_RAT	CBG_RAT Corticosteroid-binding globulin OS=Rattus norvegicus GN=Serpina	2	4	1	1	1	2
>sp P36 P36953	AFAM_RAT	AFAM_RAT Afamin OS=Rattus norvegicus GN=Afm PE=2 SV=1	2	6	6	6	10	5
>sp P40 P40112	PSB3_RAT	PSB3_RAT Proteasome subunit beta type-3 OS=Rattus norvegicus GN=Psb	2	2	3	2	4	3
>sp P49 P49134	ITB1_RAT	ITB1_RAT Integrin beta-1 OS=Rattus norvegicus GN=Itgb1 PE=2 SV=1	2	2	8	4	4	4
>sp P53 P53987	MOT1_RAT	MOT1_RAT Monocarboxylate transporter 1 OS=Rattus norvegicus GN=Slc16	2		2			1
>sp P55 P55314	CO8B_RAT	CO8B_RAT Complement component C8 beta chain OS=Rattus norvegicus GN=	2	3	8	8	7	7
>sp P62 P62630	EF1A1_RAT	EF1A1_RAT Elongation factor 1-alpha 1 OS=Rattus norvegicus GN=Eef1a1 PE	2		3	1	1	2
>sp P62 P62836	RAP1A_RAT	RAP1A_RAT Ras-related protein Rap-1A OS=Rattus norvegicus GN=Rap1a PE	2	2	6	3	2	5
>sp P63 P63045	VAMP2_RAT	VAMP2_RAT Vesicle-associated membrane protein 2 OS=Rattus norvegicus	2		3			1
>sp P68 P68511	1433F_RAT	1433F_RAT 14-3-3 protein eta OS=Rattus norvegicus GN=Ywhah PE=1 SV=2	2		3		1	1
>sp Q07 Q07936	ANXA2_RAT	ANXA2_RAT Annexin A2 OS=Rattus norvegicus GN=Anxa2 PE=1 SV=2	2	2	4	4	3	6
>sp Q5F Q5RKL5	STEA3_RAT	STEA3_RAT Metalloreductase STEAP3 OS=Rattus norvegicus GN=Steap3 PE=	2		9	2	2	3
>sp Q5 Q5X173	GDIR1_RAT	GDIR1_RAT Rho GDP-dissociation inhibitor 1 OS=Rattus norvegicus GN=Arh	2		3	1	1	1
>sp Q5 Q5X1F6	TBA4A_RAT	TBA4A_RAT Tubulin alpha-4A chain OS=Rattus norvegicus GN=Tuba4a PE=2	2	1	2	3	4	2
>sp Q6 Q62975	ZPI_RAT	ZPI_RAT Protein Z-dependent protease inhibitor OS=Rattus norvegicus GN=	2	3	3	2	4	6
>sp Q6 Q63081	PDIA6_RAT	PDIA6_RAT Protein disulfide-isomerase A6 OS=Rattus norvegicus GN=Pdia	2	1	3	5	6	3
>sp Q6 Q63514	C4BPB_RAT	C4BPB_RAT C4b-binding protein alpha chain OS=Rattus norvegicus GN=C4b	2		4	9	14	2
>sp Q6 Q6MG61	CLIC1_RAT	CLIC1_RAT Chloride intracellular channel protein 1 OS=Rattus norvegicus GN=	2		3	1	2	1
>sp Q6 Q6NYB7	RAB1A_RAT	RAB1A_RAT Ras-related protein Rab-1A OS=Rattus norvegicus GN=Rab1A PE	2	1	2	2	2	2
>sp Q6 Q6P0K8	PLAK_RAT	PLAK_RAT Junction plakoglobin OS=Rattus norvegicus GN=Jup PE=1 SV=1	2	6	5	11	6	8
>sp Q8 Q8CHN8	MASP1_RAT	MASP1_RAT Mannan-binding lectin serine protease 1 OS=Rattus norvegicus	2		3	3	4	
>sp Q9 Q9Z1P2	ACTN1_RAT	ACTN1_RAT Alpha-actinin-1 OS=Rattus norvegicus GN=Actn1 PE=1 SV=1	2	2	10	1	3	7
>tr B0B B0BNJ1	B0BNJ1_RAT	B0BNJ1_RAT LOC683667 protein OS=Rattus norvegicus GN=Sri PE=2 SV=1	2		1		1	1
>tr B2R B2R272	B2R272_RAT	B2R272_RAT Actin related protein 2/3 complex, subunit 4 (Predicted), isofor	2		2	2	2	2
>tr D3Z D3Z8B2	D3Z8B2_RAT	D3Z8B2_RAT RCG64160 OS=Rattus norvegicus GN=LOC100361952 PE=4 SV=	2	1	3	2	3	
>tr D3Z D3ZK03	D3ZK03_RAT	D3ZK03_RAT Uncharacterized protein OS=Rattus norvegicus PE=4 SV=2	2	2	2	1	1	2
>tr D3Z D3ZKM4	D3ZKM4_RAT	D3ZKM4_RAT Protein Proz OS=Rattus norvegicus GN=Proz PE=3 SV=2	2		2	3	7	4
>tr D3Z D3ZPL2	D3ZPL2_RAT	D3ZPL2_RAT Uncharacterized protein OS=Rattus norvegicus PE=2 SV=2	2	1	2	1	1	2
>tr D3Z D3ZWD6	D3ZWD6_RAT	D3ZWD6_RAT Complement component 8, alpha polypeptide (Predicted) OS	2	2	5	8	12	3
>tr D4A D4A3D1	D4A3D1_RAT	D4A3D1_RAT Protein Ighv13-1 (Fragment) OS=Rattus norvegicus GN=Ighv13	2		2	3	4	1
>tr F1L F1LM30	F1LM30_RAT	F1LM30_RAT Uncharacterized protein (Fragment) OS=Rattus norvegicus PE=	2	2	2	4	4	2
>tr F1L F1LN13	F1LN13_RAT	F1LN13_RAT Protein F5 OS=Rattus norvegicus GN=F5 PE=2 SV=2	2	1	2	2		3
>tr F1L F1LUA1	F1LUA1_RAT	F1LUA1_RAT Protein Eea1 (Fragment) OS=Rattus norvegicus GN=Eea1 PE=2	2		6	4	11	4
>tr F1L F1LWS4	F1LWS4_RAT	F1LWS4_RAT Protein Cfh3 (Fragment) OS=Rattus norvegicus GN=LOC68374	2		1	9	7	2
>tr F1L F1LYU4	F1LYU4_RAT	F1LYU4_RAT Uncharacterized protein (Fragment) OS=Rattus norvegicus PE=	2	1	1	2	2	2
>tr F1L F1LZG3	F1LZG3_RAT	F1LZG3_RAT Uncharacterized protein (Fragment) OS=Rattus norvegicus PE=	2	2	4	2	2	2
>tr F1M F1M1Q7	F1M1Q7_RAT	F1M1Q7_RAT Uncharacterized protein (Fragment) OS=Rattus norvegicus PE	2	2	2	1	1	2
>tr F1M F1M229	F1M229_RAT	F1M229_RAT Uncharacterized protein (Fragment) OS=Rattus norvegicus PE=	2	1	2	2	1	1
>tr F1M F1M4R1	F1M4R1_RAT	F1M4R1_RAT Uncharacterized protein (Fragment) OS=Rattus norvegicus PE=	2	2	2	3	3	2
>tr F1M F1M5X4	F1M5X4_RAT	F1M5X4_RAT Uncharacterized protein (Fragment) OS=Rattus norvegicus GN	2	1	2	3	3	1
>tr F1M F1M7F8	F1M7F8_RAT	F1M7F8_RAT Oxidation resistance protein 1 (Fragment) OS=Rattus norvegic	2	4	7	13	13	8
>tr F7E F7ERG5	F7ERG5_RAT	F7ERG5_RAT Protein RT1-A (Fragment) OS=Rattus norvegicus GN=RT1-A PE=	2		1	1	1	1

>tr F7FL F7FL53	F7FL53_RAT	F7FL53_RAT Protein Slc43a1 OS=Rattus norvegicus GN=Slc43a1 PE=4 SV=1	2	1		1		
>tr G5A G5AXS5	G5AXS5_HETGA	G5AXS5_HETGA Complement C5 OS=Heterocephalus glaber GN=GW7_0976	2	5	5	3	4	3
>tr G5B G5BBH0	G5BBH0_HETGA	G5BBH0_HETGA Ras-related protein Rap-1b OS=Heterocephalus glaber GN=G5BM62_HETGA Thrombospondin-1 OS=Heterocephalus glaber GN=GW7_1	2		2	2	1	1
>tr G5B G5BM62	G5BM62_HETGA	G5BM62_HETGA Thrombospondin-1 OS=Heterocephalus glaber GN=GW7_1	2	2	2		2	1
>tr G5C G5CON5	G5CON5_HETGA	G5CON5_HETGA Complement C3 OS=Heterocephalus glaber GN=GW7_2047	2	2	1	1	4	1
>tr M0F M0R6R6	M0R6R6_RAT	M0R6R6_RAT Uncharacterized protein OS=Rattus norvegicus PE=4 SV=1	2	1	2	2	3	1
>tr M0F M0R6U4	M0R6U4_RAT	M0R6U4_RAT Uncharacterized protein (Fragment) OS=Rattus norvegicus PE=4 SV=1	2	2	4	6	6	4
>tr M0F M0R8B6	M0R8B6_RAT	M0R8B6_RAT Protein LOC679312 OS=Rattus norvegicus GN=LOC679312 PE=4 SV=1	2	3	8	3	6	8
>tr M0F M0R9F4	M0R9F4_RAT	M0R9F4_RAT Uncharacterized protein (Fragment) OS=Rattus norvegicus PE=4 SV=1	2	1	2	3	3	2
>tr M0F M0RBF1	M0RBF1_RAT	M0RBF1_RAT Complement C3 OS=Rattus norvegicus GN=C3 PE=4 SV=1	2	2	7	7	9	6
>tr M0F M0RDF0	M0RDF0_RAT	M0RDF0_RAT Uncharacterized protein (Fragment) OS=Rattus norvegicus PE=4 SV=1	2		4	5	4	2
>tr Q62 Q62669	Q62669_RAT	Q62669_RAT Protein Hbb-b1 OS=Rattus norvegicus GN=Hbb-b1 PE=3 SV=1	2		4	5	3	1
>tr Q6if Q6IRJ7	Q6IRJ7_RAT	Q6IRJ7_RAT Annexin OS=Rattus norvegicus GN=Anxa7 PE=2 SV=1	2		3	2	1	1
>tr Q9Z Q9Z1J7	Q9Z1J7_RAT	Q9Z1J7_RAT Protein Slc1a5 OS=Rattus norvegicus GN=Slc1a5 PE=2 SV=1	2	1	6	2	2	2
>sp B0B B0BNA5	COTL1_RAT	COTL1_RAT Coactosin-like protein OS=Rattus norvegicus GN=Cotl1 PE=1 SV=1	1			1	1	1
>sp O35 O35509	RB11B_RAT	RB11B_RAT Ras-related protein Rab-11B OS=Rattus norvegicus GN=Rab11b	1	1	1		1	1
>sp O55 O55156	CLIP2_RAT	CLIP2_RAT CAP-Gly domain-containing linker protein 2 OS=Rattus norvegicus GN=Clp2 PE=1 SV=1	1		1	2	3	3
>sp O7C O70173	P3C2G_RAT	P3C2G_RAT Phosphatidylinositol 4-phosphate 3-kinase C2 domain-containing protein 4 OS=Rattus norvegicus GN=P3C2G PE=2 SV=2	1	1	1			1
>sp P01 P01883	IGHD_RAT	IGHD_RAT Ig delta chain C region (Fragment) OS=Rattus norvegicus PE=2 SV=2	1		2	2	2	1
>sp P02 P02564	MYH7_RAT	MYH7_RAT Myosin-7 OS=Rattus norvegicus GN=Myh7 PE=2 SV=2	1					3
>sp P04 P04797	G3P_RAT	G3P_RAT Glyceraldehyde-3-phosphate dehydrogenase OS=Rattus norvegicus GN=G3p PE=1 SV=1	1	4	4	4	6	6
>sp P04 P04916	RET4_RAT	RET4_RAT Retinol-binding protein 4 OS=Rattus norvegicus GN=Rbp4 PE=1 SV=1	1	1		2		
>sp P05 P05197	EF2_RAT	EF2_RAT Elongation factor 2 OS=Rattus norvegicus GN=Eef2 PE=1 SV=4	1		3	3	5	5
>sp P06 P06399	FIBA_RAT	FIBA_RAT Fibrinogen alpha chain OS=Rattus norvegicus GN=Fga PE=1 SV=3	1	1	3	3		
>sp P06 P06765	PLF4_RAT	PLF4_RAT Platelet factor 4 OS=Rattus norvegicus GN=Pf4 PE=1 SV=1	1		2	3	3	1
>sp P07 P07150	ANXA1_RAT	ANXA1_RAT Annexin A1 OS=Rattus norvegicus GN=Anxa1 PE=1 SV=2	1	6	8	3	3	4
>sp P07 P07151	B2MG_RAT	B2MG_RAT Beta-2-microglobulin OS=Rattus norvegicus GN=B2m PE=1 SV=1	1		3	1	1	
>sp P08 P08753	GNAI3_RAT	GNAI3_RAT Guanine nucleotide-binding protein G(i) subunit alpha OS=Rattus norvegicus GN=Gnai3 PE=1 SV=1	1		1			
>sp P09 P09527	RAB7A_RAT	RAB7A_RAT Ras-related protein Rab-7a OS=Rattus norvegicus GN=Rab7a PE=1 SV=1	1		5	4	5	4
>sp P10 P10111	PPIA_RAT	PPIA_RAT Peptidyl-prolyl cis-trans isomerase A OS=Rattus norvegicus GN=Ppia	1		4	3	3	1
>sp P10 P10536	RAB1B_RAT	RAB1B_RAT Ras-related protein Rab-1B OS=Rattus norvegicus GN=Rab1b PE=1 SV=1	1	1	1	1	2	1
>sp P11 P11505	AT2B1_RAT	AT2B1_RAT Plasma membrane calcium-transporting ATPase 1 OS=Rattus norvegicus GN=At2b1 PE=1 SV=1	1		2	1	1	2
>sp P11 P11884	ALDH2_RAT	ALDH2_RAT Aldehyde dehydrogenase, mitochondrial OS=Rattus norvegicus GN=Aldh2 PE=1 SV=1	1		2	1	1	1
>sp P11 P11980	KPYM_RAT	KPYM_RAT Pyruvate kinase isozymes M1/M2 OS=Rattus norvegicus GN=Pkm	1	1	10	6	8	7
>sp P12 P12847	MYH3_RAT	MYH3_RAT Myosin-3 OS=Rattus norvegicus GN=Myh3 PE=2 SV=1	1		1			2
>sp P13 P13697	MAOX_RAT	MAOX_RAT NADP-dependent malic enzyme OS=Rattus norvegicus GN=Me1	1	1	3	1	1	1
>sp P13 P13838	LEUK_RAT	LEUK_RAT Leukosialin (Fragment) OS=Rattus norvegicus GN=Spn PE=1 SV=1	1					1
>sp P16 P16086	SPTN1_RAT	SPTN1_RAT Spectrin alpha chain, non-erythrocytic 1 OS=Rattus norvegicus GN=Sptn1 PE=1 SV=1	1		10	6	6	6
>sp P18 P18420	PSA1_RAT	PSA1_RAT Proteasome subunit alpha type-1 OS=Rattus norvegicus GN=Psm1	1			2	4	3
>sp P18 P18424	LCAT_RAT	LCAT_RAT Phosphatidylcholine-sterol acyltransferase OS=Rattus norvegicus GN=Lcat PE=1 SV=1	1		1	1	2	1
>sp P19 P19627	GNAZ_RAT	GNAZ_RAT Guanine nucleotide-binding protein G(z) subunit alpha OS=Rattus norvegicus GN=Gnaz PE=1 SV=1	1		2	1	1	2
>sp P19 P19836	PCY1A_RAT	PCY1A_RAT Choline-phosphate cytidylyltransferase A OS=Rattus norvegicus GN=Pcy1a PE=1 SV=1	1					
>sp P20 P20766	LAC1_RAT	LAC1_RAT Ig lambda-1 chain C region OS=Rattus norvegicus PE=2 SV=1	1					
>sp P26 P26644	APOH_RAT	APOH_RAT Beta-2-glycoprotein 1 OS=Rattus norvegicus GN=ApoH PE=2 SV=2	1	2	1	10	11	1
>sp P31 P31977	EZR1_RAT	EZR1_RAT Ezrin OS=Rattus norvegicus GN=Ezr PE=1 SV=3	1		2			1
>sp P34 P34067	PSB4_RAT	PSB4_RAT Proteasome subunit beta type-4 OS=Rattus norvegicus GN=Psm4	1	1	2	1	3	2
>sp P35 P35565	CALX_RAT	CALX_RAT Calnexin OS=Rattus norvegicus GN=Canx PE=1 SV=1	1		3	1		2
>sp P37 P37285	KLC1_RAT	KLC1_RAT Kinesin light chain 1 OS=Rattus norvegicus GN=Klc1 PE=1 SV=2	1		2			
>sp P40 P40241	CD9_RAT	CD9_RAT CD9 antigen OS=Rattus norvegicus GN=Cd9 PE=1 SV=2	1			1	2	
>sp P45 P45592	COF1_RAT	COF1_RAT Cofilin-1 OS=Rattus norvegicus GN=Cf1 PE=1 SV=3	1		3	1	1	3
>sp P46 P46462	TERA_RAT	TERA_RAT Transitional endoplasmic reticulum ATPase OS=Rattus norvegicus GN=Tera PE=1 SV=1	1	1	3	3		2
>sp P48 P48004	PSA7_RAT	PSA7_RAT Proteasome subunit alpha type-7 OS=Rattus norvegicus GN=Psm7	1		3	1	1	2
>sp P54 P54311	GBB1_RAT	GBB1_RAT Guanine nucleotide-binding protein G(i)/G(s)/G(t) subunit beta-1 OS=Rattus norvegicus GN=Gbb1 PE=1 SV=1	1	1	2			1
>sp P55 P55797	APOC4_RAT	APOC4_RAT Apolipoprotein C-IV OS=Rattus norvegicus GN=ApoC4 PE=2 SV=2	1		1	3	5	2
>sp P62 P62762	VISL1_RAT	VISL1_RAT Visinin-like protein 1 OS=Rattus norvegicus GN=Vsnl1 PE=1 SV=2	1					
>sp P63 P63025	VAMP3_RAT	VAMP3_RAT Vesicle-associated membrane protein 3 OS=Rattus norvegicus GN=Vamp3 PE=1 SV=1	1		3	1	2	1
>sp P69 P69897	TBB5_RAT	TBB5_RAT Tubulin beta-5 chain OS=Rattus norvegicus GN=Tubb5 PE=1 SV=1	1		1	1	1	1
>sp P70 P70550	RAB8B_RAT	RAB8B_RAT Ras-related protein Rab-8B OS=Rattus norvegicus GN=Rab8b PE=1 SV=1	1		1	1	1	1
>sp P81 P81155	VDAC2_RAT	VDAC2_RAT Voltage-dependent anion-selective channel protein 2 OS=Rattus norvegicus GN=Vdac2 PE=1 SV=1	1	1	1	1	1	1
>sp P97 P97829	CD47_RAT	CD47_RAT Leukocyte surface antigen CD47 OS=Rattus norvegicus GN=Cd47 PE=1 SV=1	1	1	2	2	2	1
>sp Q07 Q07647	GTR3_RAT	GTR3_RAT Solute carrier family 2, facilitated glucose transporter member 3 OS=Rattus norvegicus GN=Gtr3 PE=1 SV=1	1		1	1	1	2
>sp Q07 Q07969	CD36_RAT	CD36_RAT Platelet glycoprotein 4 OS=Rattus norvegicus GN=Cd36 PE=1 SV=1	1	1	5		2	2
>sp Q51 Q51007	PEPD_RAT	PEPD_RAT Xaa-Pro dipeptidase OS=Rattus norvegicus GN=Pepd PE=2 SV=1	1	3	3	2	3	5
>sp Q51 Q5U2P2	IGS11_RAT	IGS11_RAT Immunoglobulin superfamily member 11 OS=Rattus norvegicus GN=Igs11 PE=1 SV=1	1					
>sp Q51 Q5U300	UBA1_RAT	UBA1_RAT Ubiquitin-like modifier-activating enzyme 1 OS=Rattus norvegicus GN=Uba1 PE=1 SV=1	1		5	5	7	8
>sp Q6: Q63016	LAT1_RAT	LAT1_RAT Large neutral amino acids transporter small subunit 1 OS=Rattus norvegicus GN=Lat1 PE=1 SV=1	1	1	2			1
>sp Q6: Q63377	AT1B3_RAT	AT1B3_RAT Sodium/potassium-transporting ATPase subunit beta-3 OS=Rattus norvegicus GN=At1b3 PE=1 SV=1	1	1	2	1	1	
>sp Q6: Q63644	ROCK1_RAT	ROCK1_RAT Rho-associated protein kinase 1 OS=Rattus norvegicus GN=Rock1 PE=1 SV=1	1		7	1	2	3
>sp Q6: Q63678	ZA2G_RAT	ZA2G_RAT Zinc-alpha-2-glycoprotein OS=Rattus norvegicus GN=Azgp1 PE=2 SV=1	1	3	1	2	2	2
>sp Q6: Q64126	EHD1_RAT	EHD1_RAT EH domain-containing protein 1 OS=Rattus norvegicus GN=Ehd1 PE=1 SV=1	1	1	7			3
>sp Q6: Q64578	AT2A1_RAT	AT2A1_RAT Sarcoplasmic/endoplasmic reticulum calcium ATPase 1 OS=Rattus norvegicus GN=At2a1 PE=1 SV=1	1	2	6	1		2
>sp Q6: Q66H04	FBX43_RAT	FBX43_RAT F-box only protein 43 OS=Rattus norvegicus GN=Fbxo43 PE=2 SV=1	1					
>sp Q6: Q68FR2	BIN2_RAT	BIN2_RAT Bridging integrator 2 OS=Rattus norvegicus GN=Bin2 PE=1 SV=1	1	1	2			3
>sp Q6: Q68FS4	AMPL_RAT	AMPL_RAT Cytosol aminopeptidase OS=Rattus norvegicus GN=Lap3 PE=1 SV=1	1		7	2	6	4
>sp Q6: Q6P9V9	TBA1B_RAT	TBA1B_RAT Tubulin alpha-1B chain OS=Rattus norvegicus GN=Tuba1b PE=1 SV=1	1	1	2	1	2	2
>sp Q6: Q6RUV5	RAC1_RAT	RAC1_RAT Ras-related C3 botulinum toxin substrate 1 OS=Rattus norvegicus GN=Rac1 PE=1 SV=1	1		4	3	4	1
>sp Q8: Q80W57	ABCG2_RAT	ABCG2_RAT ATP-binding cassette sub-family G member 2 OS=Rattus norvegicus GN=Abcg2 PE=1 SV=1	1		1			1
>sp Q8: Q8R4C0	CAN5_RAT	CAN5_RAT Calpain-5 OS=Rattus norvegicus GN=Capn5 PE=1 SV=1	1		1			
>sp Q9: Q9EQV8	CBPN_RAT	CBPN_RAT Carboxypeptidase N catalytic chain OS=Rattus norvegicus GN=Cpbn PE=1 SV=1	1	7	8	3	1	2
>sp Q9: Q9EQV9	CBPB2_RAT	CBPB2_RAT Carboxypeptidase B2 OS=Rattus norvegicus GN=Cpb2 PE=2 SV=1	1	1	2			1
>sp Q9: Q9ESV6	G3PT_RAT	G3PT_RAT Glyceraldehyde-3-phosphate dehydrogenase, testis-specific OS=Rattus norvegicus GN=G3pt PE=1 SV=1	1		2	1	1	1
>sp Q9: Q9JIM7	GP1BB_RAT	GP1BB_RAT Platelet glycoprotein 1b beta chain OS=Rattus norvegicus GN=Gp1bb PE=1 SV=1	1			1	2	
>sp Q9: Q9WTT6	GUAD_RAT	GUAD_RAT Guanine deaminase OS=Rattus norvegicus GN=Gda PE=1 SV=1	1	1	3	2	2	3
>sp Q9: Q9WVB1	RAB6A_RAT	RAB6A_RAT Ras-related protein Rab-6A OS=Rattus norvegicus GN=Rab6a PE=1 SV=1	1				1	1
>tr B0B B0BNK1	B0BNK1_RAT	B0BNK1_RAT Protein Rab5c OS=Rattus norvegicus GN=Rab5c PE=2 SV=1	1		3		1	2
>tr B1H B1H239	B1H239_RAT	B1H239_RAT Leucine rich repeat containing 49 (Predicted) OS=Rattus norvegicus GN=B1h239 PE=1 SV=1	1	1	1	1	1	1
>tr D3Z D3Z9R6	D3Z9R6_RAT	D3Z9R6_RAT Protein Ermap (Fragment) OS=Rattus norvegicus GN=Ermap PE=1 SV=1	1	1	2	1	1	1
>tr D3Z D3Z920	D3Z920_RAT	D3Z920_RAT Ankyrin 1, erythroid OS=Rattus norvegicus GN=Ank1 PE=4 SV=1	1		3	1	1	1
>tr D3Z D3ZAT7	D3ZAT7_RAT	D3ZAT7_RAT Protein Fam83f OS=Rattus norvegicus GN=Fam83f PE=4 SV=1	1					
>tr D3Z D3ZC54	D3ZC54_RAT	D3ZC54_RAT Uncharacterized protein OS=Rattus norvegicus PE=4 SV=2	1	2	3	3	4	3
>tr D3Z D3ZET2	D3ZET2_RAT	D3ZET2_RAT Protein LOC100910851 OS=Rattus norvegicus GN=Spink5 PE=4 SV=1	1					
>tr D3Z D3ZIL8	D3ZIL8_RAT	D3ZIL8_RAT Uncharacterized protein (Fragment) OS=Rattus norvegicus PE=4 SV=1	1	1	2	2	2	1

>tr D3Z1D3ZKH4	D3ZKH4_RAT	D3ZKH4_RAT Ash1 (Absent, small, or homeotic)-like (Drosophila) (Predicted)	1						
>tr D3Z1D3ZMY4	D3ZMY4_RAT	D3ZMY4_RAT Uncharacterized protein OS=Rattus norvegicus GN=LOC10036	1		2	3			
>tr D3Z1D3ZQQ1	D3ZQQ1_RAT	D3ZQQ1_RAT Protein Aftph OS=Rattus norvegicus GN=Aftph PE=2 SV=1	1		1	1			
>tr D3Z1D3ZQR5	D3ZQR5_RAT	D3ZQR5_RAT Uncharacterized protein OS=Rattus norvegicus PE=4 SV=1	1			2			
>tr D3Z1D3ZQU7	D3ZQU7_RAT	D3ZQU7_RAT Protein Gp1ba OS=Rattus norvegicus GN=Gp1ba PE=4 SV=1	1	1	7	4	5	5	
>tr D3Z1D3ZRN3	D3ZRN3_RAT	D3ZRN3_RAT Protein Actbl2 OS=Rattus norvegicus GN=Actbl2 PE=3 SV=1	1	1	1	1		1	
>tr D3Z1D3ZS97	D3ZS97_RAT	D3ZS97_RAT CD226 antigen (Predicted), isoform CRA_1 OS=Rattus norvegicus	1		1	1	1	1	1
>tr D3Z1D3ZUQ7	D3ZUQ7_RAT	D3ZUQ7_RAT Pantothenate kinase 3 (Predicted) OS=Rattus norvegicus GN=	1						
>tr D3Z1D3ZW21	D3ZW21_RAT	D3ZW21_RAT Integrin alpha-D OS=Rattus norvegicus GN=Itgax PE=2 SV=2	1		3	1	1	1	1
>tr D3Z1D3ZXH4	D3ZXH4_RAT	D3ZXH4_RAT Uncharacterized protein OS=Rattus norvegicus PE=4 SV=1	1	1	2	2	2	1	
>tr D3Z1D3ZY96	D3ZY96_RAT	D3ZY96_RAT Neutrophilic granule protein (Predicted) OS=Rattus norvegicus	1	1	1	1	1	1	1
>tr D3Z1D3ZY2E	D3ZY2E_RAT	D3ZY2E_RAT Uncharacterized protein OS=Rattus norvegicus GN=RGD15656	1	1	1	1	1	1	1
>tr D3Z1D3ZZ08	D3ZZ08_RAT	D3ZZ08_RAT Uncharacterized protein OS=Rattus norvegicus PE=4 SV=2	1		2	2	1	1	1
>tr D3Z1D3ZZ57	D3ZZ57_RAT	D3ZZ57_RAT Protein RGD1561662 OS=Rattus norvegicus GN=RGD1561662 F	1						
>tr D4A1D4A0Y6	D4A0Y6_RAT	D4A0Y6_RAT Protein Mki67 OS=Rattus norvegicus GN=Mki67 PE=4 SV=1	1						
>tr D4A1D4A1T6	D4A1T6_RAT	D4A1T6_RAT Protein C1r (Fragment) OS=Rattus norvegicus GN=C1r PE=2 SV	1	3	6	3	4	2	
>tr D4A1D4A3L8	D4A3L8_RAT	D4A3L8_RAT Uncharacterized protein OS=Rattus norvegicus PE=4 SV=2	1		1				
>tr D4A1D4A589	D4A589_RAT	D4A589_RAT Protein Smg6 OS=Rattus norvegicus GN=Smg6 PE=2 SV=2	1						
>tr D4A1D4A7U1	D4A7U1_RAT	D4A7U1_RAT Protein Zyx OS=Rattus norvegicus GN=Zyx PE=2 SV=1	1		1				
>tr D4A1D4A8F2	D4A8F2_RAT	D4A8F2_RAT Protein Rsu1 OS=Rattus norvegicus GN=Rsu1 PE=2 SV=2	1	3	3			3	
>tr D4A1D4A9U9	D4A9U9_RAT	D4A9U9_RAT Protein Mreg OS=Rattus norvegicus GN=Mreg PE=4 SV=1	1						
>tr D4A1D4ADA1	D4ADA1_RAT	D4ADA1_RAT Fibrinogen C domain containing 1 (Predicted) OS=Rattus norv	1						
>tr E9P1E9PSU8	E9PSU8_RAT	E9PSU8_RAT Uncharacterized protein OS=Rattus norvegicus PE=4 SV=2	1	1	1	1		1	1
>tr E9P1E9PTB7	E9PTB7_RAT	E9PTB7_RAT Protein Ptptrj OS=Rattus norvegicus GN=Ptptrj PE=2 SV=2	1		6		1	4	
>tr E9P1E9PTW1	E9PTW1_RAT	E9PTW1_RAT Protein Scamp3 OS=Rattus norvegicus GN=Scamp3 PE=2 SV=2	1		2		1		
>tr F1L1F1L4P4	F1L4P4_RAT	F1L4P4_RAT Protein Itgal OS=Rattus norvegicus GN=Itgal PE=2 SV=2	1		4				
>tr F1L1F1L5E0	F1L5E0_RAT	F1L5E0_RAT Protein Dnah2 (Fragment) OS=Rattus norvegicus GN=Dnah2 PE	1						
>tr F1L1F1L5T1	F1L5T1_RAT	F1L5T1_RAT Fibronectin OS=Rattus norvegicus GN=Fn1 PE=2 SV=2	1	1	1	1	1	1	1
>tr F1L1F1L5U1	F1L5U1_RAT	F1L5U1_RAT Uncharacterized protein (Fragment) OS=Rattus norvegicus PE=	1	2	1	1	2	1	
>tr F1L1F1L1V34	F1LV34_RAT	F1LV34_RAT Uncharacterized protein (Fragment) OS=Rattus norvegicus PE=	1				4	1	
>tr F1L1F1L1V44	F1LV44_RAT	F1LV44_RAT Protein Tenm3 OS=Rattus norvegicus GN=Tenm3 PE=2 SV=2	1	1			1	1	
>tr F1L1F1L1YF1	F1LYF1_RAT	F1LYF1_RAT Uncharacterized protein (Fragment) OS=Rattus norvegicus PE=	1				1	1	
>tr F1L1F1L1ZHO	F1LZHO_RAT	F1LZHO_RAT Protein LOC100912707 (Fragment) OS=Rattus norvegicus GN=	1				1	1	
>tr F1L1F1L1ZX9	F1LZX9_RAT	F1LZX9_RAT Protein Itgav OS=Rattus norvegicus GN=Itgav PE=3 SV=2	1	1	4	1	2	3	
>tr F1M1F1M0B7	F1M0B7_RAT	F1M0B7_RAT Uncharacterized protein OS=Rattus norvegicus GN=LOC10036	1	1	1	2	2	1	
>tr F1M1F1M0H4	F1M0H4_RAT	F1M0H4_RAT Uncharacterized protein (Fragment) OS=Rattus norvegicus PE	1	2	2	1			
>tr F1M1F1M2W3	F1M2W3_RAT	F1M2W3_RAT Uncharacterized protein (Fragment) OS=Rattus norvegicus PE	1	1	4	1	3	2	
>tr F1M1F1M3E9	F1M3E9_RAT	F1M3E9_RAT Uncharacterized protein (Fragment) OS=Rattus norvegicus PE=	1		1	1	1	1	
>tr F1M1F1M3X3	F1M3X3_RAT	F1M3X3_RAT Uncharacterized protein (Fragment) OS=Rattus norvegicus PE=	1	1	2	1		2	
>tr F1M1F1M3Y4	F1M3Y4_RAT	F1M3Y4_RAT Protein RGD1564184 OS=Rattus norvegicus GN=RGD1564184	1	1	2	1	1	1	
>tr F1M1F1M6I7	F1M6I7_RAT	F1M6I7_RAT Proteasome subunit alpha type OS=Rattus norvegicus GN=Psm	1		1	1	1	1	
>tr F1M1F1M6Z1	F1M6Z1_RAT	F1M6Z1_RAT Apolipoprotein B-100 OS=Rattus norvegicus GN=Apol PE=2 SV	1	1	1	3	2	2	
>tr F1M1F1M7H6	F1M7H6_RAT	F1M7H6_RAT Protein Ccdc150 OS=Rattus norvegicus GN=Ccdc150 PE=4 SV=	1						
>tr F1M1F1M7I8	F1M7I8_RAT	F1M7I8_RAT Protein RGD1565617 OS=Rattus norvegicus GN=RGD1565617 F	1	1	1	1	1	1	
>tr F1M1F1MAE7	F1MAE7_RAT	F1MAE7_RAT Uncharacterized protein (Fragment) OS=Rattus norvegicus PE=	1		2		2	1	
>tr G3V1G3V6P7	G3V6P7_RAT	G3V6P7_RAT Myosin, heavy polypeptide 9, non-muscle OS=Rattus norvegici	1		2	1	1	1	
>tr G3V1G3V6S0	G3V6S0_RAT	G3V6S0_RAT Protein Sptbn1 OS=Rattus norvegicus GN=Sptbn1 PE=4 SV=2	1		10	3	3	5	
>tr G3V1G3V7K3	G3V7K3_RAT	G3V7K3_RAT Ceruloplasmin OS=Rattus norvegicus GN=Cp PE=4 SV=1	1	9	7	4	3	4	
>tr G3V1G3V8B1	G3V8B1_RAT	G3V8B1_RAT Glycosylphosphatidylinositol specific phospholipase D1, isofor	1		1	1	1	1	
>tr G3V1G3V8D4	G3V8D4_RAT	G3V8D4_RAT Apolipoprotein C-II (Predicted) OS=Rattus norvegicus GN=Apo	1	3	3	3	5	4	
>tr G3V1G3V8L7	G3V8L7_RAT	G3V8L7_RAT Integrin alpha M OS=Rattus norvegicus GN=Itgam PE=3 SV=1	1		4	6	5	3	
>tr G3V1G3V8S9	G3V8S9_RAT	G3V8S9_RAT Cathelicidin antimicrobial peptide OS=Rattus norvegicus GN=C	1		2	2	3	2	
>tr G3V1G3V9M2	G3V9M2_RAT	G3V9M2_RAT Mitogen-activated protein kinase 8 interacting protein 2 OS=f	1						
>tr G5A1G5AK08	G5AK08_HETGA	G5AK08_HETGA Limkain-b1 OS=Heterocephalus glaber GN=GW7_18239 PE=	1						
>tr G5A1G5ALS1	G5ALS1_HETGA	G5ALS1_HETGA Keratin, type II cytoskeletal 6B OS=Heterocephalus glaber G	1	2				1	
>tr G5A1G5AN63	G5AN63_HETGA	G5AN63_HETGA Programmed cell death protein 7 OS=Heterocephalus glabe	1						
>tr G5A1G5ANL3	G5ANL3_HETGA	G5ANL3_HETGA Serum paraoxonase/arylesterase 1 OS=Heterocephalus glal	1	1	1	1	1	1	
>tr G5A1G5ARG1	G5ARG1_HETGA	G5ARG1_HETGA Olfactory receptor 2W3 OS=Heterocephalus glaber GN=GV	1						
>tr G5A1G5AU27	G5AU27_HETGA	G5AU27_HETGA Tubulin alpha-1B chain OS=Heterocephalus glaber GN=GW	1						
>tr G5B1G5B5V9	G5B5V9_HETGA	G5B5V9_HETGA Protocadherin Fat 4 OS=Heterocephalus glaber GN=GW7_0	1					1	
>tr G5B1G5B8W4	G5B8W4_HETGA	G5B8W4_HETGA 40S ribosomal protein S27a OS=Heterocephalus glaber GN	1	1	3	1	2	1	
>tr G5B1G5B9W5	G5B9W5_HETGA	G5B9W5_HETGA Coiled-coil domain-containing protein 115 OS=Heteroceph	1						
>tr G5B1G5BB30	G5BB30_HETGA	G5BB30_HETGA 14-3-3 protein beta/alpha OS=Heterocephalus glaber GN=C	1	2	4		2	7	
>tr G5B1G5BEE7	G5BEE7_HETGA	G5BEE7_HETGA Roundabout-like protein 4 (Fragment) OS=Heterocephalus	1	1	1	1	1	1	
>tr G5B1G5BEK1	G5BEK1_HETGA	G5BEK1_HETGA 14-3-3 protein theta OS=Heterocephalus glaber GN=GW7_1	1		1			1	
>tr G5B1G5BI33	G5BI33_HETGA	G5BI33_HETGA Cadherin-like protein 28 OS=Heterocephalus glaber GN=GW	1						
>tr G5B1G5BJ62	G5BJ62_HETGA	G5BJ62_HETGA BAH and coiled-coil domain-containing protein 1 (Fragment	1						
>tr G5B1G5BDJ8	G5BDJ8_HETGA	G5BDJ8_HETGA Pleckstrin-like protein domain-containing family G member	1						
>tr G5B1G5BM71	G5BM71_HETGA	G5BM71_HETGA Complement factor H (Fragment) OS=Heterocephalus glab	1		1		1	1	
>tr G5B1G5BPG5	G5BPG5_HETGA	G5BPG5_HETGA Long-chain-fatty-acid--CoA ligase 6 (Fragment) OS=Heteroc	1						
>tr G5B1G5BQA1	G5BQA1_HETGA	G5BQA1_HETGA GTPase KRas OS=Heterocephalus glaber GN=GW7_04133 F	1						
>tr G5B1G5BQE1	G5BQE1_HETGA	G5BQE1_HETGA Histone H2B OS=Heterocephalus glaber GN=GW7_13927 P	1		1	1	1	1	
>tr G5C1G5C185	G5C185_HETGA	G5C185_HETGA Melanoma inhibitory activity protein 3 (Fragment) OS=Hete	1						
>tr G5C1G5C311	G5C311_HETGA	G5C311_HETGA Desmoglein-1 OS=Heterocephalus glaber GN=GW7_20889 I	1	2	2	2	3	2	
>tr G5C1G5C6X5	G5C6X5_HETGA	G5C6X5_HETGA Granzyme A OS=Heterocephalus glaber GN=GW7_00250 PE	1	1	1			1	
>tr M0F1M0R4B8	M0R4B8_RAT	M0R4B8_RAT Pyruvate kinase OS=Rattus norvegicus PE=3 SV=1	1		1	1	1	1	
>tr M0F1M0R4B9	M0R4B9_RAT	M0R4B9_RAT Protein RGD1565252 OS=Rattus norvegicus GN=RGD1565252	1	2	1	1	1	1	
>tr M0F1M0R4X3	M0R4X3_RAT	M0R4X3_RAT Uncharacterized protein (Fragment) OS=Rattus norvegicus PE=	1	1	1	1	1	1	
>tr M0F1M0R7Q2	M0R7Q2_RAT	M0R7Q2_RAT Uncharacterized protein (Fragment) OS=Rattus norvegicus PE	1	1	2	2	3	1	
>tr M0F1M0RBD5	M0RBD5_RAT	M0RBD5_RAT Uncharacterized protein (Fragment) OS=Rattus norvegicus PE	1		1	1	1	1	
>tr M0F1M0RBD7	M0RBD7_RAT	M0RBD7_RAT Protein Atp11b (Fragment) OS=Rattus norvegicus GN=Atp11b	1						
>tr M0F1M0RBK4	M0RBK4_RAT	M0RBK4_RAT Uncharacterized protein OS=Rattus norvegicus PE=4 SV=1	1	1	2	2	1	1	
>tr M0F1M0RBL2	M0RBL2_RAT	M0RBL2_RAT Uncharacterized protein (Fragment) OS=Rattus norvegicus PE=	1	1	1	2	2	1	
>tr M0F1M0RD98	M0RD98_RAT	M0RD98_RAT Uncharacterized protein (Fragment) OS=Rattus norvegicus PE	1	2	2	2	2	2	
>tr O551O55158	O55158_RAT	O55158_RAT D6.1A protein OS=Rattus norvegicus GN=Tspan8 PE=2 SV=2	1	1	1				
>tr Q5M1Q5M776	Q5M776_RAT	Q5M776_RAT ATPase, H+ transporting, lysosomal 38kDa, V0 subunit d1 OS=	1		1				
>tr Q5X1Q5XHY0	Q5XHY0_RAT	Q5XHY0_RAT DEAD (Asp-Glu-Ala-Asp) box polypeptide 18 OS=Rattus norveg	1						
>tr Q5X1Q5XI77	Q5XI77_RAT	Q5XI77_RAT Annexin OS=Rattus norvegicus GN=Anxa11 PE=2 SV=1	1		6			4	
>tr Q681Q68FT8	Q68FT8_RAT	Q68FT8_RAT Protein Serpinf2 OS=Rattus norvegicus GN=Serpinf2 PE=2 SV=1	1	7	6	3	4	4	
>tr Q681Q68FY4	Q68FY4_RAT	Q68FY4_RAT Group specific component OS=Rattus norvegicus GN=Gc PE=2	1	1	1	1	1	1	
>tr Q6A1Q6AYU5	Q6AYU5_RAT	Q6AYU5_RAT Poly(RC) binding protein 2 OS=Rattus norvegicus GN=Pcbp2 PI	1						
>tr Q6M1Q6MG90	Q6MG90_RAT	Q6MG90_RAT Complement component 4, gene 2 OS=Rattus norvegicus GN=	1	3	4	6	5	4	

>tr Q6P Q6P3V8	Q6P3V8_RAT	Q6P3V8_RAT Eukaryotic translation initiation factor 4A1 OS=Rattus norvegicus	1	1	1	1
>tr Q6T Q6TUG7	Q6TUG7_RAT	Q6TUG7_RAT LRRGT00077 OS=Rattus norvegicus GN=RGD1310507 PE=2 SV	1	1	4	3
>tr Q7T Q7TPI9	Q7TPI9_RAT	Q7TPI9_RAT Ac2-248 OS=Rattus norvegicus GN=Serpinc1 PE=2 SV=1	1	5	12	6
>sp A0J A0JPF7	OLA1_RAT	OLA1_RAT Obg-like ATPase 1 OS=Rattus norvegicus GN=Ola1 PE=2 SV=1	1		8	13
>sp A1A A1A5R8	K1841_RAT	K1841_RAT Uncharacterized protein KIAA1841 homolog OS=Rattus norvegicus	1			
>sp A2V A2VCW5	S38A5_RAT	S38A5_RAT Sodium-coupled neutral amino acid transporter 5 OS=Rattus norvegicus	1			
>sp B0B B0BN85	SUGT1_RAT	SUGT1_RAT Suppressor of G2 allele of SKP1 homolog OS=Rattus norvegicus			1	
>sp B0B B0BNN3	CAH1_RAT	CAH1_RAT Carbonic anhydrase 1 OS=Rattus norvegicus GN=Ca1 PE=1 SV=1		1		1
>sp B2C B2GU25	CAZA1_RAT	CAZA1_RAT F-actin-capping protein subunit alpha-1 OS=Rattus norvegicus		1		
>sp B2Z B2ZDY2	L_WWAVU	L_WWAVU RNA-directed RNA polymerase L OS=Whitewater arroyo virus (isolate)			1	1
>sp B4F B4F795	CTL2_RAT	CTL2_RAT Choline transporter-like protein 2 OS=Rattus norvegicus GN=Slc4		2		
>sp D3Z D3ZH56	BAP1_RAT	BAP1_RAT Ubiquitin carboxyl-terminal hydrolase BAP1 OS=Rattus norvegicus				1
>sp D3Z D3ZHV2	MACF1_RAT	MACF1_RAT Microtubule-actin cross-linking factor 1 OS=Rattus norvegicus	1			
>sp D3Z D3ZTE0	FA12_RAT	FA12_RAT Coagulation factor XII OS=Rattus norvegicus GN=F12 PE=2 SV=1			1	
>sp D4F D4A1J9	LRFN5_RAT	LRFN5_RAT Leucine-rich repeat and fibronectin type-III domain-containing			1	
>sp D4F D4A5U3	TRGM3_RAT	TRGM3_RAT Protein-glutamine gamma-glutamyltransferase E OS=Rattus norvegicus	2		1	1
>sp D4F D4A631	BIG1_RAT	BIG1_RAT Brefeldin A-inhibited guanine nucleotide-exchange protein 1 OS=Rattus norvegicus		1		
>sp D4F D4ACN8	PLRKT_RAT	PLRKT_RAT Plasminogen receptor (KT) OS=Rattus norvegicus GN=Plgrkt PE=1 SV=1	1			
>sp G3V G3V7P1	STX12_RAT	STX12_RAT Syntaxin-12 OS=Rattus norvegicus GN=Stx12 PE=1 SV=1		1		
>sp O08 O08562	SCN9A_RAT	SCN9A_RAT Sodium channel protein type 9 subunit alpha OS=Rattus norvegicus	1		1	1
>sp O08 O08770	GPV_RAT	GPV_RAT Platelet glycoprotein V OS=Rattus norvegicus GN=Gp5 PE=3 SV=1		1	1	
>sp O08 O08838	AMPH_RAT	AMPH_RAT Amphiphysin OS=Rattus norvegicus GN=Amph PE=1 SV=1		1		
>sp O35 O35142	COPB2_RAT	COPB2_RAT Coatamer subunit beta' OS=Rattus norvegicus GN=Copb2 PE=1 SV=1				1
>sp O35 O35264	PA1B2_RAT	PA1B2_RAT Platelet-activating factor acetylhydrolase IB subunit beta OS=Rattus norvegicus		1		
>sp O35 O35303	DNM1L_RAT	DNM1L_RAT Dynamin-1-like protein OS=Rattus norvegicus GN=Dnm1l PE=1 SV=1	1	1	2	1
>sp O35 O35567	PUR9_RAT	PUR9_RAT Bifunctional purine biosynthesis protein PURH OS=Rattus norvegicus	1			
>sp O35 O35763	MOES_RAT	MOES_RAT Moesin OS=Rattus norvegicus GN=Msn PE=1 SV=3	3			2
>sp O35 O35777	MAGT1_RAT	MAGT1_RAT Magnesium transporter protein 1 OS=Rattus norvegicus GN=Magn		1		
>sp O35 O35795	ENTP2_RAT	ENTP2_RAT Ectonucleoside triphosphate diphosphohydrolase 2 OS=Rattus norvegicus		1		
>sp O35 O35828	CORO7_RAT	CORO7_RAT Coronin-7 (Fragment) OS=Rattus norvegicus GN=Coro7 PE=2 SV=1	1			
>sp O54 O54975	XPP1_RAT	XPP1_RAT Xaa-Pro aminopeptidase 1 OS=Rattus norvegicus GN=Xpnpep1 PE=1 SV=1	2			1
>sp O55 O55006	ROB1_RAT	ROB1_RAT Protein RoBo-1 OS=Rattus norvegicus PE=1 SV=1		1	2	
>sp O55 O55096	DPP3_RAT	DPP3_RAT Dipeptidyl peptidase 3 OS=Rattus norvegicus GN=Dpp3 PE=1 SV=1	1		2	2
>sp O7C O70352	CD82_RAT	CD82_RAT CD82 antigen OS=Rattus norvegicus GN=Cd82 PE=1 SV=1	2	1		
>sp O7C O70377	SNP23_RAT	SNP23_RAT Synaptosomal-associated protein 23 OS=Rattus norvegicus GN=SNP23				1
>sp O7C O70513	LG3BP_RAT	LG3BP_RAT Galectin-3-binding protein OS=Rattus norvegicus GN=Lgals3bp F	1			
>sp O7C O70535	LIFR_RAT	LIFR_RAT Leukemia inhibitory factor receptor OS=Rattus norvegicus GN=Lifr	1			2
>sp O7C O70595	ABC6_RAT	ABC6_RAT ATP-binding cassette sub-family B member 6, mitochondrial OS=Rattus norvegicus	1	6		
>sp O88 O88298	RHD_RAT	RHD_RAT Blood group Rh(D) polypeptide OS=Rattus norvegicus GN=Rhd PE=1 SV=1		1		
>sp O88 O88583	SOC53_RAT	SOC53_RAT Suppressor of cytokine signaling 3 OS=Rattus norvegicus GN=So			1	
>sp O88 O88600	HSP74_RAT	HSP74_RAT Heat shock 70 kDa protein 4 OS=Rattus norvegicus GN=Hspa4 P	1	2	2	1
>sp O88 O88656	ARC1B_RAT	ARC1B_RAT Actin-related protein 2/3 complex subunit 1B OS=Rattus norvegicus	2			2
>sp O88 O88902	PTN23_RAT	PTN23_RAT Tyrosine-protein phosphatase non-receptor type 23 (Fragment)	1			
>sp O88 O88989	MDHC_RAT	MDHC_RAT Malate dehydrogenase, cytoplasmic OS=Rattus norvegicus GN=MDHC	1		1	1
>sp P00 P00564	KCRM_RAT	KCRM_RAT Creatine kinase M-type OS=Rattus norvegicus GN=Ckm PE=1 SV=1	1			4
>sp P00 P00697	LYSC1_RAT	LYSC1_RAT Lysozyme C-1 OS=Rattus norvegicus GN=Lyz1 PE=1 SV=2	1	1		1
>sp P00 P00762	TRY1_RAT	TRY1_RAT Anionic trypsin-1 OS=Rattus norvegicus GN=Prss1 PE=1 SV=1		1		
>sp P00 P00763	TRY2_RAT	TRY2_RAT Anionic trypsin-2 OS=Rattus norvegicus GN=Prss2 PE=1 SV=2	1	1		1
>sp P00 P00787	CATB_RAT	CATB_RAT Cathepsin B OS=Rattus norvegicus GN=Ctsb PE=1 SV=2	1	1		
>sp P01 P01681	KVX01_RAT	KVX01_RAT Ig kappa chain V region S211 OS=Rattus norvegicus PE=1 SV=1		2	2	3
>sp P02 P02563	MYH6_RAT	MYH6_RAT Myosin-6 OS=Rattus norvegicus GN=Myh6 PE=2 SV=2				4
>sp P02 P02680	FIBG_RAT	FIBG_RAT Fibrinogen gamma chain OS=Rattus norvegicus GN=Fgg PE=1 SV=1		3	2	
>sp P04 P04157	PTPRC_RAT	PTPRC_RAT Receptor-type tyrosine-protein phosphatase C OS=Rattus norvegicus		7	1	3
>sp P04 P04636	MDHM_RAT	MDHM_RAT Malate dehydrogenase, mitochondrial OS=Rattus norvegicus GN=MDHM			1	2
>sp P04 P04638	APOA2_RAT	APOA2_RAT Apolipoprotein A-II OS=Rattus norvegicus GN=Apoa2 PE=2 SV=1			1	1
>sp P04 P04692	TPM1_RAT	TPM1_RAT Tropomyosin alpha-1 chain OS=Rattus norvegicus GN=Tpm1 PE=1 SV=1		1		3
>sp P04 P04762	CATA_RAT	CATA_RAT Catalase OS=Rattus norvegicus GN=Cat PE=1 SV=3	2	2	1	2
>sp P04 P04905	GSTM1_RAT	GSTM1_RAT Glutathione S-transferase Mu 1 OS=Rattus norvegicus GN=Gstr				1
>sp P04 P04906	GSTP1_RAT	GSTP1_RAT Glutathione S-transferase P OS=Rattus norvegicus GN=Gstp1 PE=1 SV=1	1	2		2
>sp P05 P05369	FPP5_RAT	FPP5_RAT Farnesyl pyrophosphate synthase OS=Rattus norvegicus GN=Fdps				1
>sp P05 P05696	KPCA_RAT	KPCA_RAT Protein kinase C alpha type OS=Rattus norvegicus GN=Prcka PE=1 SV=1		1		1
>sp P05 P05708	HXK1_RAT	HXK1_RAT Hexokinase-1 OS=Rattus norvegicus GN=Hk1 PE=1 SV=4			1	
>sp P05 P05712	RAB2A_RAT	RAB2A_RAT Ras-related protein Rab-2A OS=Rattus norvegicus GN=Rab2a PE=1 SV=1		1		
>sp P06 P06759	APOC3_RAT	APOC3_RAT Apolipoprotein C-III OS=Rattus norvegicus GN=Apo3 PE=2 SV=1			1	1
>sp P06 P06761	GRP78_RAT	GRP78_RAT 78 kDa glucose-regulated protein OS=Rattus norvegicus GN=Hsp70		4	2	2
>sp P07 P07092	GDN_RAT	GDN_RAT Glia-derived nexin OS=Rattus norvegicus GN=Serpine2 PE=1 SV=1	2	3		1
>sp P07 P07153	RPN1_RAT	RPN1_RAT Dolichyl-diphosphooligosaccharide--protein glycosyltransferase 5		1		
>sp P07 P07379	PCKGC_RAT	PCKGC_RAT Phosphoenolpyruvate carboxykinase, cytosolic [GTP] OS=Rattus norvegicus				1
>sp P07 P07725	CD8A_RAT	CD8A_RAT T-cell surface glycoprotein CD8 alpha chain OS=Rattus norvegicus		1		
>sp P07 P07824	ARG1_RAT	ARG1_RAT Arginase-1 OS=Rattus norvegicus GN=Arg1 PE=1 SV=2			2	1
>sp P07 P07895	SODM_RAT	SODM_RAT Superoxide dismutase [Mn], mitochondrial OS=Rattus norvegicus		1		1
>sp P08 P08289	PPBT_RAT	PPBT_RAT Alkaline phosphatase, tissue-nonspecific isozyme OS=Rattus norvegicus			1	
>sp P08 P08661	MBL2_RAT	MBL2_RAT Mannose-binding protein C OS=Rattus norvegicus GN=Mbl2 PE=1 SV=1		1		1
>sp P09 P09605	KCRS_RAT	KCRS_RAT Creatine kinase S-type, mitochondrial OS=Rattus norvegicus GN=KCRS				1
>sp P09 P09739	TNNT3_RAT	TNNT3_RAT Troponin T, fast skeletal muscle OS=Rattus norvegicus GN=Tnnt3				1
>sp P09 P09811	PYGL_RAT	PYGL_RAT Glycogen phosphorylase, liver form OS=Rattus norvegicus GN=Pygl	1	4	1	2
>sp P0C P0C5Y8	ALS2_RAT	ALS2_RAT Alsin OS=Rattus norvegicus GN=Als2 PE=2 SV=1		1		
>sp P10 P10252	CD48_RAT	CD48_RAT CD48 antigen OS=Rattus norvegicus GN=Cd48 PE=1 SV=1				1
>sp P10 P10633	CP2D1_RAT	CP2D1_RAT Cytochrome P450 2D1 OS=Rattus norvegicus GN=Cyp2d1 PE=2 SV=1			3	
>sp P10 P10634	CP2DQ_RAT	CP2DQ_RAT Cytochrome P450 2D26 OS=Rattus norvegicus GN=Cyp2d26 PE=1 SV=1		1		
>sp P10 P10719	ATPB_RAT	ATPB_RAT ATP synthase subunit beta, mitochondrial OS=Rattus norvegicus	1	1		2
>sp P10 P10960	SAP_RAT	SAP_RAT Sulfated glycoprotein 1 OS=Rattus norvegicus GN=Psap PE=1 SV=1		1	3	2
>sp P11 P11232	THIO_RAT	THIO_RAT Thioredoxin OS=Rattus norvegicus GN=Txn PE=1 SV=2	1			
>sp P11 P11348	DHPR_RAT	DHPR_RAT Dihydropteridine reductase OS=Rattus norvegicus GN=Qdpr PE=1 SV=1				1
>sp P11 P11507	AT2A2_RAT	AT2A2_RAT Sarcoplasmic/endoplasmic reticulum calcium ATPase 2 OS=Rattus norvegicus				1
>sp P11 P11598	PDIA3_RAT	PDIA3_RAT Protein disulfide-isomerase A3 OS=Rattus norvegicus GN=Pdia3		3		3
>sp P12 P12368	KAP2_RAT	KAP2_RAT cAMP-dependent protein kinase type II-alpha regulatory subunit				1
>sp P12 P12369	KAP3_RAT	KAP3_RAT cAMP-dependent protein kinase type II-beta regulatory subunit		2		
>sp P12 P12785	FAS_RAT	FAS_RAT Fatty acid synthase OS=Rattus norvegicus GN=Fasn PE=1 SV=3		6		3
>sp P13 P13233	CN37_RAT	CN37_RAT 2',3'-cyclic-nucleotide 3'-phosphodiesterase OS=Rattus norvegicus		2		1
>sp P14 P14272	KLKB1_RAT	KLKB1_RAT Plasma kallikrein OS=Rattus norvegicus GN=Klkb1 PE=1 SV=1	1		1	2
>sp P14 P14423	PA2GA_RAT	PA2GA_RAT Phospholipase A2, membrane associated OS=Rattus norvegicus				1

>sp P14 P14480	FIBB_RAT	FIBB_RAT Fibrinogen beta chain OS=Rattus norvegicus GN=Fgb PE=1 SV=4				1	1		1
>sp P14 P14668	ANXA5_RAT	ANXA5_RAT Annexin A5 OS=Rattus norvegicus GN=Anxa5 PE=1 SV=3				1			
>sp P14 P14669	ANXA3_RAT	ANXA3_RAT Annexin A3 OS=Rattus norvegicus GN=Anxa3 PE=1 SV=4				1			
>sp P15 P15083	PIGR_RAT	PIGR_RAT Polymeric immunoglobulin receptor OS=Rattus norvegicus GN=Pi	1	3	4	5			1
>sp P15 P15684	AMPN_RAT	AMPN_RAT Aminopeptidase N OS=Rattus norvegicus GN=Anpep PE=1 SV=2			2				1
>sp P15 P15999	ATPA_RAT	ATPA_RAT ATP synthase subunit alpha, mitochondrial OS=Rattus norvegicus	1	3			1	3	
>sp P16 P16409	MYL3_RAT	MYL3_RAT Myosin light chain 3 OS=Rattus norvegicus GN=Myl3 PE=2 SV=2			1				2
>sp P16 P16617	PGK1_RAT	PGK1_RAT Phosphoglycerate kinase 1 OS=Rattus norvegicus GN=Pgk1 PE=1	1	3	2	4	4		
>sp P16 P16638	ACLY_RAT	ACLY_RAT ATP-citrate synthase OS=Rattus norvegicus GN=Acly PE=1 SV=1							1
>sp P18 P18292	THRB_RAT	THRB_RAT Prothrombin OS=Rattus norvegicus GN=F2 PE=1 SV=1	3	5	10	11			5
>sp P18 P18297	SPRE_RAT	SPRE_RAT Sepiapterin reductase OS=Rattus norvegicus GN=Spr PE=1 SV=1			1				
>sp P18 P18421	PSB1_RAT	PSB1_RAT Proteasome subunit beta type-1 OS=Rattus norvegicus GN=Psm	1	1					
>sp P18 P18422	PSA3_RAT	PSA3_RAT Proteasome subunit alpha type-3 OS=Rattus norvegicus GN=Psm		2	3	2			2
>sp P18 P18596	AT2A3_RAT	AT2A3_RAT Sarcoplasmic/endoplasmic reticulum calcium ATPase 3 OS=Ratt	1	1					
>sp P19 P19511	AT5F1_RAT	AT5F1_RAT ATP synthase subunit b, mitochondrial OS=Rattus norvegicus GN							1
>sp P19 P19939	APOC1_RAT	APOC1_RAT Apolipoprotein C-1 OS=Rattus norvegicus GN=Apoc1 PE=2 SV=1			2	1			
>sp P19 P19999	MBL1_RAT	MBL1_RAT Mannose-binding protein A OS=Rattus norvegicus GN=Mbl1 PE=		1					1
>sp P20 P20068	NEUT_RAT	NEUT_RAT Neurotensin/neurodynin N OS=Rattus norvegicus GN=Nts PE=1		1					1
>sp P20 P20171	RASH_RAT	RASH_RAT GTPase HRas OS=Rattus norvegicus GN=Hras1 PE=1 SV=2		2					
>sp P20 P20411	FCERG_RAT	FCERG_RAT High affinity immunoglobulin epsilon receptor subunit gamma C		1					
>sp P20 P20786	PGFRA_RAT	PGFRA_RAT Platelet-derived growth factor receptor alpha OS=Rattus norveg			1				
>sp P21 P21213	HUTH_RAT	HUTH_RAT Histidine ammonia-lyase OS=Rattus norvegicus GN=Hal PE=1 SV=	7						3
>sp P21 P21575	DYN1_RAT	DYN1_RAT Dynamin-1 OS=Rattus norvegicus GN=Dnm1 PE=1 SV=2							1
>sp P21 P21670	PSA4_RAT	PSA4_RAT Proteasome subunit alpha type-4 OS=Rattus norvegicus GN=Psm		2	1	6			
>sp P22 P22062	PIMT_RAT	PIMT_RAT Protein-L-isoaspartate(D-aspartate) O-methyltransferase OS=Rat		1					
>sp P22 P22985	XDH_RAT	XDH_RAT Xanthine dehydrogenase/oxidase OS=Rattus norvegicus GN=Xdh f	3	5	3	3	5		
>sp P23 P23593	APOD_RAT	APOD_RAT Apolipoprotein D OS=Rattus norvegicus GN=Apod PE=1 SV=1				1	3		1
>sp P23 P23606	TGM1_RAT	TGM1_RAT Protein-glutamine gamma-glutamyltransferase K OS=Rattus nor							1
>sp P23 P23640	RB27A_RAT	RB27A_RAT Ras-related protein Rab-27A OS=Rattus norvegicus GN=Rab27a		2					1
>sp P23 P23680	SAMP_RAT	SAMP_RAT Serum amyloid P-component OS=Rattus norvegicus GN=Apcs PE	1	5			1		1
>sp P23 P23764	GPX3_RAT	GPX3_RAT Glutathione peroxidase 3 OS=Rattus norvegicus GN=Gpx3 PE=2 S	4	4	2	3	2		2
>sp P24 P24268	CATD_RAT	CATD_RAT Cathepsin D OS=Rattus norvegicus GN=Ctsd PE=1 SV=1			1	1			
>sp P24 P24368	PPIB_RAT	PPIB_RAT Peptidyl-prolyl cis-trans isomerase B OS=Rattus norvegicus GN=Pf		1					1
>sp P25 P25113	PGAM1_RAT	PGAM1_RAT Phosphoglycerate mutase 1 OS=Rattus norvegicus GN=Pgam1	1						
>sp P25 P25235	RPN2_RAT	RPN2_RAT Dolichyl-diphosphooligosaccharide--protein glycosyltransferase s		1					1
>sp P25 P25236	SEPP1_RAT	SEPP1_RAT Selenoprotein P OS=Rattus norvegicus GN=Sepp1 PE=1 SV=2	1						1
>sp P25 P25286	VPP1_RAT	VPP1_RAT V-type proton ATPase 116 kDa subunit a isoform 1 OS=Rattus noi	1	3			1		2
>sp P26 P26051	CD44_RAT	CD44_RAT CD44 antigen OS=Rattus norvegicus GN=Cd44 PE=1 SV=2		1			1		
>sp P26 P26453	BASI_RAT	BASI_RAT Basigin OS=Rattus norvegicus GN=Bsg PE=1 SV=2		1			1		
>sp P27 P27139	CAH2_RAT	CAH2_RAT Carbonic anhydrase 2 OS=Rattus norvegicus GN=Ca2 PE=1 SV=2		2					
>sp P27 P27274	CD59_RAT	CD59_RAT CD59 glycoprotein OS=Rattus norvegicus GN=Cd59 PE=1 SV=2		1					
>sp P27 P27791	KAPCA_RAT	KAPCA_RAT cAMP-dependent protein kinase catalytic subunit alpha OS=Rat		1					1
>sp P28 P28064	PSB8_RAT	PSB8_RAT Proteasome subunit beta type-8 OS=Rattus norvegicus GN=Psm							1
>sp P28 P28077	PSB9_RAT	PSB9_RAT Proteasome subunit beta type-9 OS=Rattus norvegicus GN=Psm		1					1
>sp P28 P28480	TCPA_RAT	TCPA_RAT T-complex protein 1 subunit alpha OS=Rattus norvegicus GN=Tcp		1					1
>sp P29 P29476	NOS1_RAT	NOS1_RAT Nitric oxide synthase, brain OS=Rattus norvegicus GN=Nos1 PE=J							1
>sp P29 P29534	VCAM1_RAT	VCAM1_RAT Vascular cell adhesion protein 1 OS=Rattus norvegicus GN=Vca				1	1		1
>sp P30 P30349	LKHA4_RAT	LKHA4_RAT Leukotriene A-4 hydrolase OS=Rattus norvegicus GN=Lta4h PE=							1
>sp P31 P31000	VIME_RAT	VIME_RAT Vimentin OS=Rattus norvegicus GN=Vim PE=1 SV=2	1						4
>sp P31 P31394	PROC_RAT	PROC_RAT Vitamin K-dependent protein C OS=Rattus norvegicus GN=Proc P							1
>sp P31 P31652	SC6A4_RAT	SC6A4_RAT Sodium-dependent serotonin transporter OS=Rattus norvegicus			1				
>sp P32 P32577	CSK_RAT	CSK_RAT Tyrosine-protein kinase CSK OS=Rattus norvegicus GN=Csk PE=1 SV	1	1					
>sp P34 P34058	HS90B_RAT	HS90B_RAT Heat shock protein HSP 90-beta OS=Rattus norvegicus GN=Hsp9	1	4	2	3	4		
>sp P35 P35248	SFTPD_RAT	SFTPD_RAT Pulmonary surfactant-associated protein D OS=Rattus norvegicu				1	1		
>sp P35 P35280	RAB8A_RAT	RAB8A_RAT Ras-related protein Rab-8A OS=Rattus norvegicus GN=Rab8a PE			1	1	1		1
>sp P35 P35407	CXCR2_RAT	CXCR2_RAT C-X-C chemokine receptor type 2 OS=Rattus norvegicus GN=Cxc			1				
>sp P35 P35525	CLCN2_RAT	CLCN2_RAT Chloride channel protein 2 OS=Rattus norvegicus GN=Cln2 PE=							1
>sp P35 P35704	PRDX2_RAT	PRDX2_RAT Peroxiredoxin-2 OS=Rattus norvegicus GN=Prdx2 PE=1 SV=3			1	1	1		1
>sp P35 P35859	ALS_RAT	ALS_RAT Insulin-like growth factor-binding protein complex acid labile subu	4	6	4	8	3		
>sp P36 P36370	TAP1_RAT	TAP1_RAT Antigen peptide transporter 1 OS=Rattus norvegicus GN=Tap1 PE							
>sp P36 P36860	RALB_RAT	RALB_RAT Ras-related protein Ras-B OS=Rattus norvegicus GN=Ralb PE=2 SV			1				
>sp P36 P36972	APT_RAT	APT_RAT Adenine phosphoribosyltransferase OS=Rattus norvegicus GN=Apr			2				1
>sp P38 P38650	DYHC1_RAT	DYHC1_RAT Cytoplasmic dynein 1 heavy chain 1 OS=Rattus norvegicus GN=I	1	27		1			7
>sp P38 P38983	RSSA_RAT	RSSA_RAT 40S ribosomal protein SA OS=Rattus norvegicus GN=Rpsa PE=1 SV			1		1		1
>sp P39 P39052	DYN2_RAT	DYN2_RAT Dynamin-2 OS=Rattus norvegicus GN=Dnm2 PE=1 SV=1	1	7	2	3	5		
>sp P40 P40307	PSB2_RAT	PSB2_RAT Proteasome subunit beta type-2 OS=Rattus norvegicus GN=Psm	1	2	1	1	3		3
>sp P40 P40329	SYRC_RAT	SYRC_RAT Arginine--tRNA ligase, cytoplasmic OS=Rattus norvegicus GN=Rar							1
>sp P41 P41498	PPAC_RAT	PPAC_RAT Low molecular weight phosphotyrosine protein phosphatase OS=		1					
>sp P41 P41542	USO1_RAT	USO1_RAT General vesicular transport factor p115 OS=Rattus norvegicus GN							1
>sp P47 P47824	P2RX1_RAT	P2RX1_RAT P2X purinoceptor 1 OS=Rattus norvegicus GN=P2rx1 PE=2 SV=1			1				
>sp P47 P47942	DPYL2_RAT	DPYL2_RAT Dihydropyrimidinase-related protein 2 OS=Rattus norvegicus GN		1					
>sp P47 P47967	LEG5_RAT	LEG5_RAT Galectin-5 OS=Rattus norvegicus GN=Lgals5 PE=1 SV=2							1
>sp P48 P48032	TIMP3_RAT	TIMP3_RAT Metalloproteinase inhibitor 3 OS=Rattus norvegicus GN=Tim			1	3	2		
>sp P48 P48037	ANXA6_RAT	ANXA6_RAT Annexin A6 OS=Rattus norvegicus GN=Anxa6 PE=1 SV=2		5					1
>sp P48 P48500	TPIS_RAT	TPIS_RAT Triosephosphate isomerase OS=Rattus norvegicus GN=Tri		1			1		2
>sp P48 P48679	LMNA_RAT	LMNA_RAT Prelamin-A/C OS=Rattus norvegicus GN=Lmna PE=1 SV=1							1
>sp P50 P50115	S10A8_RAT	S10A8_RAT Protein S100-A8 OS=Rattus norvegicus GN=S100a8 PE=1 SV=3					1		
>sp P50 P50116	S10A9_RAT	S10A9_RAT Protein S100-A9 OS=Rattus norvegicus GN=S100a9 PE=1 SV=3					1		1
>sp P50 P50137	TKT_RAT	TKT_RAT Transketolase OS=Rattus norvegicus GN=Tkt PE=1 SV=1		3			2		3
>sp P50 P50170	RDH2_RAT	RDH2_RAT Retinol dehydrogenase 2 OS=Rattus norvegicus GN=Rdh2 PE=1 S		1					
>sp P50 P50398	GDIA_RAT	GDIA_RAT Rab GDP dissociation inhibitor alpha OS=Rattus norvegicus GN=G			1				1
>sp P50 P50399	GDIB_RAT	GDIB_RAT Rab GDP dissociation inhibitor beta OS=Rattus norvegicus GN=Gc	2	6	1	1	4		
>sp P50 P50503	F10A1_RAT	F10A1_RAT Hsc70-interacting protein OS=Rattus norvegicus GN=St13 PE=1		2					1
>sp P51 P51583	PUR6_RAT	PUR6_RAT Multifunctional protein ADE2 OS=Rattus norvegicus GN=Paics PE		1					
>sp P51 P51635	AK1A1_RAT	AK1A1_RAT Alcohol dehydrogenase [NADP(+)] OS=Rattus norvegicus GN=Ak			1				1
>sp P51 P51886	LUM_RAT	LUM_RAT Lumican OS=Rattus norvegicus GN=Lum PE=2 SV=1		5					
>sp P52 P52303	AP1B1_RAT	AP1B1_RAT AP-1 complex subunit beta-1 OS=Rattus norvegicus GN=Ap1b1						1	
>sp P53 P53534	PYGB_RAT	PYGB_RAT Glycogen phosphorylase, brain form (Fragment) OS=Rattus norve				1	1		2
>sp P53 P53813	PROS_RAT	PROS_RAT Vitamin K-dependent protein S OS=Rattus norvegicus GN=Pros1		1		1			2
>sp P54 P54921	SNAA_RAT	SNAA_RAT Alpha-soluble NSF attachment protein OS=Rattus norvegicus GN=		2			1		1
>sp P55 P55053	FABP5_RAT	FABP5_RAT Fatty acid-binding protein, epidermal OS=Rattus norvegicus GN=							1
>sp P55 P55161	NCKP1_RAT	NCKP1_RAT Nck-associated protein 1 OS=Rattus norvegicus GN=Nckap1 PE=		1					2

>sp P56 P56536	KIF5C_RAT	KIF5C_RAT Kinesin heavy chain isoform 5C (Fragment) OS=Rattus norvegicus	1	1	1
>sp P56 P56574	IDHP_RAT	IDHP_RAT Isocitrate dehydrogenase [NADP], mitochondrial OS=Rattus norvegicus			1
>sp P56 P56603	SCAM1_RAT	SCAM1_RAT Secretory carrier-associated membrane protein 1 OS=Rattus norvegicus	2		
>sp P58 P58366	ANKH_RAT	ANKH_RAT Progressive ankylosis protein homolog OS=Rattus norvegicus GN=Ankh	2		
>sp P58 P58751	RELN_RAT	RELN_RAT Reelin OS=Rattus norvegicus GN=Reln PE=2 SV=1	2	1	
>sp P59 P59996	PCSK9_RAT	PCSK9_RAT Proprotein convertase subtilisin/kexin type 9 OS=Rattus norvegicus	1	2	2
>sp P60 P60892	PRPS1_RAT	PRPS1_RAT Ribose-phosphate pyrophosphokinase 1 OS=Rattus norvegicus GN=Prps1			1
>sp P60 P60901	PSA6_RAT	PSA6_RAT Proteasome subunit alpha type-6 OS=Rattus norvegicus GN=Psm1	3	3	4
>sp P61 P61203	CSN2_RAT	CSN2_RAT COP9 signalosome complex subunit 2 OS=Rattus norvegicus GN=Csn2	1		
>sp P61 P61227	RAP2B_RAT	RAP2B_RAT Ras-related protein Rap-2b OS=Rattus norvegicus GN=Rap2b PE=1 SV=1	3	1	1
>sp P61 P61765	STXB1_RAT	STXB1_RAT Syntaxin-binding protein 1 OS=Rattus norvegicus GN=Stxbp1 PE=1 SV=1	2		1
>sp P61 P61983	1433G_RAT	1433G_RAT 14-3-3 protein gamma OS=Rattus norvegicus GN=Ywhag PE=1 SV=1	1		1
>sp P62 P62138	PP1A_RAT	PP1A_RAT Serine/threonine-protein phosphatase PP1-alpha catalytic subunit OS=Rattus norvegicus GN=Ppp1a	4		1
>sp P62 P62260	1433E_RAT	1433E_RAT 14-3-3 protein epsilon OS=Rattus norvegicus GN=Ywhae PE=1 SV=1	1		
>sp P62 P62494	RB11A_RAT	RB11A_RAT Ras-related protein Rab-11A OS=Rattus norvegicus GN=Rab11a	1	3	2
>sp P62 P62747	RHOB_RAT	RHOB_RAT Rho-related GTP-binding protein RhoB OS=Rattus norvegicus GN=Rhob			1
>sp P62 P62804	H4_RAT	H4_RAT Histone H4 OS=Rattus norvegicus GN=Hist1h4b PE=1 SV=2	1	1	3
>sp P62 P62944	AP2B1_RAT	AP2B1_RAT AP-2 complex subunit beta OS=Rattus norvegicus GN=Ap2b1 PE=1 SV=1	1		1
>sp P63 P63004	LIS1_RAT	LIS1_RAT Platelet-activating factor acetylhydrolase IB subunit alpha OS=Rattus norvegicus GN=Lis1	1		
>sp P63 P63102	1433Z_RAT	1433Z_RAT 14-3-3 protein zeta/delta OS=Rattus norvegicus GN=Ywhaz PE=1 SV=1	2	1	1
>sp P68 P68035	ACTC_RAT	ACTC_RAT Actin, alpha cardiac muscle 1 OS=Rattus norvegicus GN=Actc1 PE=1 SV=1	1		1
>sp P68 P68182	KAPCB_RAT	KAPCB_RAT cAMP-dependent protein kinase catalytic subunit beta OS=Rattus norvegicus GN=Kapcb	1		
>sp P68 P68403	KPCB_RAT	KPCB_RAT Protein kinase C beta type OS=Rattus norvegicus GN=Prkcb PE=1 SV=1	1		
>sp P70 P70490	LRFGM_RAT	LRFGM_RAT Lactadherin OS=Rattus norvegicus GN=Mfge8 PE=2 SV=1	1		
>sp P70 P70587	LRRC7_RAT	LRRC7_RAT Leucine-rich repeat-containing protein 7 OS=Rattus norvegicus GN=Lrrc7	1		
>sp P80 P80385	AAKG1_RAT	AAKG1_RAT 5'-AMP-activated protein kinase subunit gamma-1 OS=Rattus norvegicus GN=Aakg1			1
>sp P81 P81718	PTN6_RAT	PTN6_RAT Tyrosine-protein phosphatase non-receptor type 6 OS=Rattus norvegicus GN=Ptn6	2		
>sp P82 P82995	HS90A_RAT	HS90A_RAT Heat shock protein HSP 90-alpha OS=Rattus norvegicus GN=Hsp90a	1	1	3
>sp P84 P84079	ARF1_RAT	ARF1_RAT ADP-ribosylation factor 1 OS=Rattus norvegicus GN=Arf1 PE=1 SV=1	2	3	4
>sp P84 P84903	STIM1_RAT	STIM1_RAT Stromal interaction molecule 1 OS=Rattus norvegicus GN=Stim1	1		
>sp P85 P85968	6PGD_RAT	6PGD_RAT 6-phosphogluconate dehydrogenase, decarboxylating OS=Rattus norvegicus GN=6pgd	2	1	3
>sp P85 P85970	ARPC2_RAT	ARPC2_RAT Actin-related protein 2/3 complex subunit 2 OS=Rattus norvegicus GN=Arpc2	2	2	3
>sp P85 P85971	6PGL_RAT	6PGL_RAT 6-phosphogluconolactonase OS=Rattus norvegicus GN=Pgl6 PE=1 SV=1			1
>sp P85 P85973	PNPH_RAT	PNPH_RAT Purine nucleoside phosphorylase OS=Rattus norvegicus GN=Pnp	1		
>sp P86 P86252	PURA_RAT	PURA_RAT Transcriptional activator protein Pur-alpha (Fragments) OS=Rattus norvegicus GN=Pura		2	1
>sp P97 P97536	CAND1_RAT	CAND1_RAT Cullin-associated NEDD8-dissociated protein 1 OS=Rattus norvegicus GN=Cand1	1	6	2
>sp P97 P97571	CAN1_RAT	CAN1_RAT Calpain-1 catalytic subunit OS=Rattus norvegicus GN=Capn1 PE=1 SV=1	2	1	3
>sp P97 P97629	LCAP_RAT	LCAP_RAT Leucyl-cystinyl aminopeptidase OS=Rattus norvegicus GN=Lncap			1
>sp P97 P97685	NFASC_RAT	NFASC_RAT Neurofascin OS=Rattus norvegicus GN=Nfasc PE=1 SV=2	1		
>sp P97 P97689	UT1_RAT	UT1_RAT Urea transporter 1 OS=Rattus norvegicus GN=Slc14a1 PE=2 SV=2	2		
>sp Q01 Q01205	ODO2_RAT	ODO2_RAT Dihydrodipolyllysine-residue succinyltransferase component of 2-LCK_RAT Proto-oncogene tyrosine-protein kinase LCK OS=Rattus norvegicus GN=Odo2	1		
>sp Q01 Q01621	LCK_RAT	LCK_RAT Proto-oncogene tyrosine-protein kinase LCK OS=Rattus norvegicus GN=Lck	2		1
>sp Q02 Q02445	TFPI1_RAT	TFPI1_RAT Tissue factor pathway inhibitor OS=Rattus norvegicus GN=Tfpi1 PE=1 SV=1		1	1
>sp Q03 Q03343	ADCY6_RAT	ADCY6_RAT Adenylate cyclase type 6 OS=Rattus norvegicus GN=Adcy6 PE=1 SV=1	1		
>sp Q03 Q03348	PTPRA_RAT	PTPRA_RAT Receptor-type tyrosine-protein phosphatase alpha OS=Rattus norvegicus GN=Ptpra	1		
>sp Q03 Q03555	GEPH_RAT	GEPH_RAT Gephyrin OS=Rattus norvegicus GN=Gphn PE=1 SV=3			1
>sp Q07 Q07009	CAN2_RAT	CAN2_RAT Calpain-2 catalytic subunit OS=Rattus norvegicus GN=Capn2 PE=1 SV=1	1		1
>sp Q07 Q07014	LYN_RAT	LYN_RAT Tyrosine-protein kinase Lyn OS=Rattus norvegicus GN=Lyn PE=1 SV=1	3	1	1
>sp Q07 Q07439	HSP71_RAT	HSP71_RAT Heat shock 70 kDa protein 1A/1B OS=Rattus norvegicus GN=Hsp71		1	
>sp Q08 Q08163	CAP1_RAT	CAP1_RAT Adenylate cyclase-associated protein 1 OS=Rattus norvegicus GN=Cap1	4	5	4
>sp Q11 Q10743	ADA10_RAT	ADA10_RAT Disintegrin and metalloproteinase domain-containing protein 1 OS=Rattus norvegicus GN=Ada10			1
>sp Q11 Q11068	EIF3A_RAT	EIF3A_RAT Eukaryotic translation initiation factor 3 subunit A OS=Rattus norvegicus GN=Eif3a	3	1	1
>sp Q27 Q27YE3	NCAP_IPPYV	NCAP_IPPYV Nucleoprotein OS=Ippv virus (isolate Rat/Central African Republic) MYH4_RAT Myosin-4 OS=Rattus norvegicus GN=Mvh4 PE=2 SV=1	1		1
>sp Q27 Q27RW1	MYH4_RAT	MYH4_RAT Myosin-4 OS=Rattus norvegicus GN=Mvh4 PE=2 SV=1			1
>sp Q21 Q21L32	UBR4_RAT	UBR4_RAT E3 ubiquitin-protein ligase UBR4 OS=Rattus norvegicus GN=Ubr4		1	
>sp Q21 Q2WEA5	TRPM1_RAT	TRPM1_RAT Transient receptor potential cation channel subfamily M member 1 OS=Rattus norvegicus GN=Trpm1			1
>sp Q3 Q3KRD8	IF6_RAT	IF6_RAT Eukaryotic translation initiation factor 6 OS=Rattus norvegicus GN=If6		1	1
>sp Q3 Q3MIE4	VAT1_RAT	VAT1_RAT Synaptic vesicle membrane protein VAT-1 homolog OS=Rattus norvegicus GN=Vat1		2	1
>sp Q3 Q3T1J1	IF5A1_RAT	IF5A1_RAT Eukaryotic translation initiation factor 5A-1 OS=Rattus norvegicus GN=If5a1	2		1
>sp Q3 Q3T1K5	CAZA2_RAT	CAZA2_RAT F-actin-capping protein subunit alpha-2 OS=Rattus norvegicus GN=Caza2		1	1
>sp Q3 Q3T1L0	A16A1_RAT	A16A1_RAT Aldehyde dehydrogenase family 16 member A1 OS=Rattus norvegicus GN=A16a1	1		
>sp Q4 Q4AE70	CARM1_RAT	CARM1_RAT Histone-arginine methyltransferase CARM1 OS=Rattus norvegicus GN=Carm1			1
>sp Q4 Q4AEF8	COPG1_RAT	COPG1_RAT Coatamer subunit gamma-1 OS=Rattus norvegicus GN=Copg1 F	1		
>sp Q4 Q4FZU2	K2C6A_RAT	K2C6A_RAT Keratin, type II cytoskeletal 6A OS=Rattus norvegicus GN=Krt6a		2	
>sp Q4 Q4G061	EIF3B_RAT	EIF3B_RAT Eukaryotic translation initiation factor 3 subunit B OS=Rattus norvegicus GN=Eif3b	1		1
>sp Q4 Q4G075	ILEUA_RAT	ILEUA_RAT Leukocyte elastase inhibitor A OS=Rattus norvegicus GN=Serpint	2		1
>sp Q4 Q4KLF8	ARPC5_RAT	ARPC5_RAT Actin-related protein 2/3 complex subunit 5 OS=Rattus norvegicus GN=Arpc5	1		1
>sp Q4 Q4KLF6	CE162_RAT	CE162_RAT Centrosomal protein of 162 kDa OS=Rattus norvegicus GN=Cep162			1
>sp Q4 Q4KM33	PLEK_RAT	PLEK_RAT Pleckstrin OS=Rattus norvegicus GN=Plek PE=2 SV=1	1	8	5
>sp Q4 Q4KM35	PSB10_RAT	PSB10_RAT Proteasome subunit beta type-10 OS=Rattus norvegicus GN=Psb10	1	1	1
>sp Q4 Q4KM49	SYYC_RAT	SYYC_RAT Tyrosine--tRNA ligase, cytoplasmic OS=Rattus norvegicus GN=Yar	1		
>sp Q4 Q4KM74	SC22B_RAT	SC22B_RAT Vesicle-trafficking protein SEC22b OS=Rattus norvegicus GN=Sec22b	1		
>sp Q4 Q4V7C7	ARP3_RAT	ARP3_RAT Actin-related protein 3 OS=Rattus norvegicus GN=Actr3 PE=1 SV=1	1	1	3
>sp Q4 Q4V8E4	CC104_RAT	CC104_RAT Coiled-coil domain-containing protein 104 OS=Rattus norvegicus GN=Cc104		1	1
>sp Q5 Q53UA7	TAOK3_RAT	TAOK3_RAT Serine/threonine-protein kinase TAO3 OS=Rattus norvegicus GN=Taok3	1		
>sp Q5 Q5BJ57	CPNE9_RAT	CPNE9_RAT Copine-9 OS=Rattus norvegicus GN=Cpne9 PE=2 SV=1	1	1	
>sp Q5 Q5BJY9	K1C18_RAT	K1C18_RAT Keratin, type I cytoskeletal 18 OS=Rattus norvegicus GN=Krt18 F			1
>sp Q5 Q5HZV9	PP1R7_RAT	PP1R7_RAT Protein phosphatase 1 regulatory subunit 7 OS=Rattus norvegicus GN=Ppp1r7	1		
>sp Q5 Q5M7U6	ARP2_RAT	ARP2_RAT Actin-related protein 2 OS=Rattus norvegicus GN=Actr2 PE=1 SV=1	1		1
>sp Q5 Q5PP12	RSRC1_RAT	RSRC1_RAT Serine/Arginine-related protein 53 OS=Rattus norvegicus GN=Rsrc1		1	
>sp Q5 Q5QJC9	BAG5_RAT	BAG5_RAT BAG family molecular chaperone regulator 5 OS=Rattus norvegicus GN=Bag5	1		
>sp Q5 Q5RJR2	TWF1_RAT	TWF1_RAT Twinfilin-1 OS=Rattus norvegicus GN=Twf1 PE=2 SV=1			1
>sp Q5 Q5RK10	WDR1_RAT	WDR1_RAT WD repeat-containing protein 1 OS=Rattus norvegicus GN=Wdr1	5	4	4
>sp Q5 Q5U1Y4	AKCL2_RAT	AKCL2_RAT 1,5-anhydro-D-fructose reductase OS=Rattus norvegicus GN=Akcl2		1	
>sp Q5 Q5U2Z3	NP1L4_RAT	NP1L4_RAT Nucleosome assembly protein 1-like 4 OS=Rattus norvegicus GN=Np1l4			1
>sp Q5 Q5U316	RAB35_RAT	RAB35_RAT Ras-related protein Rab-35 OS=Rattus norvegicus GN=Rab35 PE=1 SV=1	1		1
>sp Q5 Q5XHY5	SYTC_RAT	SYTC_RAT Threonine--tRNA ligase, cytoplasmic OS=Rattus norvegicus GN=Tytc	1		
>sp Q5 Q5XJ32	CAPZB_RAT	CAPZB_RAT F-actin-capping protein subunit beta OS=Rattus norvegicus GN=Capzb			1
>sp Q5 Q5XIE5	MARH3_RAT	MARH3_RAT E3 ubiquitin-protein ligase MARCH3 OS=Rattus norvegicus GN=Marh3	1		
>sp Q5 Q5XIL0	RN167_RAT	RN167_RAT E3 ubiquitin-protein ligase RNF167 OS=Rattus norvegicus GN=Rn167	1		
>sp Q5 Q5XIL2	P4K2B_RAT	P4K2B_RAT Phosphatidylinositol 4-kinase type 2-beta OS=Rattus norvegicus GN=P4k2b	2		
>sp Q5 Q5XIM9	TCPB_RAT	TCPB_RAT T-complex protein 1 subunit beta OS=Rattus norvegicus GN=Cct2	1		2

>sp Q6:Q62636	RAP1B_RAT	RAP1B_RAT Ras-related protein Rap-1b OS=Rattus norvegicus GN=Rap1b PE=1 SV=1				1	
>sp Q6:Q62671	UBR5_RAT	UBR5_RAT E3 ubiquitin-protein ligase UBR5 OS=Rattus norvegicus GN=Ubr5 PE=1 SV=1	1				
>sp Q6:Q62682	CNTN3_RAT	CNTN3_RAT Contactin-3 OS=Rattus norvegicus GN=Cntn3 PE=1 SV=1					1
>sp Q6:Q62737	CY24A_RAT	CY24A_RAT Cytochrome b-245 light chain OS=Rattus norvegicus GN=Cyba P		1			1
>sp Q6:Q62745	CD81_RAT	CD81_RAT CD81 antigen OS=Rattus norvegicus GN=Cd81 PE=1 SV=1		1			
>sp Q6:Q62753	STXB2_RAT	STXB2_RAT Syntaxin-binding protein 2 OS=Rattus norvegicus GN=Stxbp2 PE=1 SV=1		4			2
>sp Q6:Q62844	FYN_RAT	FYN_RAT Tyrosine-protein kinase Fyn OS=Rattus norvegicus GN=Fyn PE=1 SV=1		1			1
>sp Q6:Q62865	PDE3A_RAT	PDE3A_RAT cGMP-inhibited 3',5'-cyclic phosphodiesterase A OS=Rattus norvegicus GN=Pde3a PE=1 SV=1			1		1
>sp Q6:Q63028	ADDA_RAT	ADDA_RAT Alpha-adducin OS=Rattus norvegicus GN=Add1 PE=1 SV=2			1		1
>sp Q6:Q63186	EI2BD_RAT	EI2BD_RAT Translation initiation factor eIF-2B subunit delta OS=Rattus norvegicus GN=Ei2bd PE=1 SV=1				1	
>sp Q6:Q63207	FA10_RAT	FA10_RAT Coagulation factor X OS=Rattus norvegicus GN=F10 PE=2 SV=1	1	3	3	3	3
>sp Q6:Q63355	MYO1C_RAT	MYO1C_RAT Unconventional myosin-1c OS=Rattus norvegicus GN=Myo1c PE=1 SV=1					1
>sp Q6:Q63400	CLD3_RAT	CLD3_RAT Claudin-3 OS=Rattus norvegicus GN=Cldn3 PE=2 SV=2	1				1
>sp Q6:Q63425	PRAX_RAT	PRAX_RAT Periaxin OS=Rattus norvegicus GN=Prx PE=1 SV=2			1		
>sp Q6:Q63471	BPIA2_RAT	BPIA2_RAT BPI fold-containing family A member 2 OS=Rattus norvegicus GN=Bpia2 PE=1 SV=1		1			1
>sp Q6:Q63507	RL14_RAT	RL14_RAT 60S ribosomal protein L14 OS=Rattus norvegicus GN=Rpl14 PE=1 SV=1		1			
>sp Q6:Q63515	C4BPB_RAT	C4BPB_RAT C4b-binding protein beta chain OS=Rattus norvegicus GN=C4bp PE=1 SV=1					1
>sp Q6:Q63556	SPA3M_RAT	SPA3M_RAT Serine protease inhibitor A3M (Fragment) OS=Rattus norvegicus GN=Spa3m PE=1 SV=1	3	2			
>sp Q6:Q63563	ABCC9_RAT	ABCC9_RAT ATP-binding cassette sub-family C member 9 OS=Rattus norvegicus GN=Abcc9 PE=1 SV=1			1		
>sp Q6:Q63584	TMEDA_RAT	TMEDA_RAT Transmembrane emp24 domain-containing protein 10 OS=Rattus norvegicus GN=Tmeda PE=1 SV=1		2			
>sp Q6:Q63617	HYOU1_RAT	HYOU1_RAT Hypoxia up-regulated protein 1 OS=Rattus norvegicus GN=Hyo1 PE=1 SV=1		1			1
>sp Q6:Q63627	SFR15_RAT	SFR15_RAT Splicing factor, arginine/serine-rich 15 (Fragment) OS=Rattus norvegicus GN=Sfr15 PE=1 SV=1					1
>sp Q6:Q63639	AL1A2_RAT	AL1A2_RAT Retinal dehydrogenase 2 OS=Rattus norvegicus GN=Ald1a2 PE=1 SV=1		1			
>sp Q6:Q63663	GBP2_RAT	GBP2_RAT Interferon-induced guanylate-binding protein 2 OS=Rattus norvegicus GN=Gbp2 PE=1 SV=1					1
>sp Q6:Q63716	PRDX1_RAT	PRDX1_RAT Peroxiredoxin-1 OS=Rattus norvegicus GN=Prdx1 PE=1 SV=1	2	2		1	2
>sp Q6:Q63862	MYH11_RAT	MYH11_RAT Myosin-11 (Fragments) OS=Rattus norvegicus GN=Myh11 PE=2 SV=1	1	1	1	1	1
>sp Q6:Q64119	MYL6_RAT	MYL6_RAT Myosin light polypeptide 6 OS=Rattus norvegicus GN=Myf6 PE=1 SV=1			1		
>sp Q6:Q641Y0	OST48_RAT	OST48_RAT Dolichyl-diphosphooligosaccharide--protein glycosyltransferase 48 OS=Rattus norvegicus GN=Ost48 PE=1 SV=1	1				
>sp Q6:Q64240	AMBP_RAT	AMBP_RAT Protein AMBP OS=Rattus norvegicus GN=Ambp PE=1 SV=1		1	3	4	
>sp Q6:Q64542	AT2B4_RAT	AT2B4_RAT Plasma membrane calcium-transporting ATPase 4 OS=Rattus norvegicus GN=At2b4 PE=1 SV=1		1			1
>sp Q6:Q64560	TPP2_RAT	TPP2_RAT Tripeptidyl-peptidase 2 OS=Rattus norvegicus GN=Tpp2 PE=2 SV=1		2			1
>sp Q6:Q66H98	SDPR_RAT	SDPR_RAT Serum deprivation-response protein OS=Rattus norvegicus GN=SDPR PE=1 SV=1		1			
>sp Q6:Q66HD0	ENPL_RAT	ENPL_RAT Endoplasmin OS=Rattus norvegicus GN=Hsp90b1 PE=1 SV=2		2		1	
>sp Q6:Q66HG5	TM9S2_RAT	TM9S2_RAT Transmembrane 9 superfamily member 2 OS=Rattus norvegicus GN=TM9S2 PE=1 SV=1		1			
>sp Q6:Q66X93	SND1_RAT	SND1_RAT Staphylococcal nuclease domain-containing protein 1 OS=Rattus norvegicus GN=Snd1 PE=1 SV=1		2			1
>sp Q6:Q68FP2	PON3_RAT	PON3_RAT Serum paraoxonase/lactonase 3 OS=Rattus norvegicus GN=Pon3 PE=1 SV=1		1	1		1
>sp Q6:Q68FQ0	TCPE_RAT	TCPE_RAT T-complex protein 1 subunit epsilon OS=Rattus norvegicus GN=Ctpe1 PE=1 SV=1		2		1	1
>sp Q6:Q68FS2	CSN4_RAT	CSN4_RAT COP9 signalosome complex subunit 4 OS=Rattus norvegicus GN=Csn4 PE=1 SV=1		1	1	1	1
>sp Q6:Q6AY20	MPRD_RAT	MPRD_RAT Cation-dependent mannose-6-phosphate receptor OS=Rattus norvegicus GN=Mprd PE=1 SV=1		2		1	
>sp Q6:Q6AY41	CC50A_RAT	CC50A_RAT Cell cycle control protein 50A OS=Rattus norvegicus GN=Tmem150 PE=1 SV=1		1			
>sp Q6:Q6AYF1	SIN1_RAT	SIN1_RAT Target of rapamycin complex 2 subunit MAPKAP1 OS=Rattus norvegicus GN=Sin1 PE=1 SV=1				1	
>sp Q6:Q6AYH5	DCTN2_RAT	DCTN2_RAT Dynactin subunit 2 OS=Rattus norvegicus GN=Dctn2 PE=1 SV=1		1			
>sp Q6:Q6AYZ1	TBA1C_RAT	TBA1C_RAT Tubulin alpha-1C chain OS=Rattus norvegicus GN=Tuba1c PE=1 SV=1				1	
>sp Q6:Q6B345	S10AB_RAT	S10AB_RAT Protein S100-A11 OS=Rattus norvegicus GN=S100a11 PE=3 SV=1	2				1
>sp Q6:Q6IE52	MUG2_RAT	MUG2_RAT Murinoglobulin-2 OS=Rattus norvegicus GN=Mug2 PE=1 SV=1	1				
>sp Q6:Q6IE64	C1RL_RAT	C1RL_RAT Complement C1r subcomponent-like protein OS=Rattus norvegicus GN=C1rl PE=1 SV=1	1				
>sp Q6:Q6IFV1	K1C14_RAT	K1C14_RAT Keratin, type I cytoskeletal 14 OS=Rattus norvegicus GN=Krt14 F				1	
>sp Q6:Q6IRK9	K1C25_RAT	K1C25_RAT Keratin, type I cytoskeletal 25 OS=Rattus norvegicus GN=Krt25 F	1			1	
>sp Q6:Q6IG01	K2C1B_RAT	K2C1B_RAT Keratin, type II cytoskeletal 1b OS=Rattus norvegicus GN=Krt77	1			1	1
>sp Q6:Q6IMF3	K2C1_RAT	K2C1_RAT Keratin, type II cytoskeletal 1 OS=Rattus norvegicus GN=Krt1 PE=1 SV=1		1			
>sp Q6:Q6IRK9	CBPQ_RAT	CBPQ_RAT Carboxypeptidase Q OS=Rattus norvegicus GN=Cpq PE=1 SV=1	1	1	1	1	1
>sp Q6:Q6LED0	H31_RAT	H31_RAT Histone H3.1 OS=Rattus norvegicus GN=H3.1 PE=1 SV=3				1	
>sp Q6:Q6MG49	BAG6_RAT	BAG6_RAT Large proline-rich protein BAG6 OS=Rattus norvegicus GN=Bag6 PE=1 SV=1		2	1	4	1
>sp Q6:Q6MGS6	LY66F_RAT	LY66F_RAT Lymphocyte antigen 6 complex locus protein G6f OS=Rattus norvegicus GN=Ly66f PE=1 SV=1	1				1
>sp Q6:Q6MGS9	G6B_RAT	G6B_RAT Protein G6b OS=Rattus norvegicus GN=G6b PE=2 SV=1		2			
>sp Q6:Q6P6U0	FGR_RAT	FGR_RAT Tyrosine-protein kinase Fgr OS=Rattus norvegicus GN=Fgr PE=1 SV=1		2			
>sp Q6:Q6P6V0	G6P1_RAT	G6P1_RAT Glucose-6-phosphatase isomerase OS=Rattus norvegicus GN=Gpi PE=1 SV=1	2	2		2	2
>sp Q6:Q6P791	LTOR1_RAT	LTOR1_RAT Ragulator complex protein 1 OS=Rattus norvegicus GN=Ltor1 PE=1 SV=1		2			
>sp Q6:Q6P7D3	IER2_RAT	IER2_RAT Immediate early response gene 2 protein OS=Rattus norvegicus GN=Ier2 PE=1 SV=1			1		
>sp Q6:Q6QLM7	KIF5A_RAT	KIF5A_RAT Kinesin heavy chain isoform 5A OS=Rattus norvegicus GN=Kif5a F					1
>sp Q6:Q6RFY2	PHAR3_RAT	PHAR3_RAT Phosphatase and actin regulator 3 OS=Rattus norvegicus GN=Phar3 PE=1 SV=1					1
>sp Q6:Q6VBO5	MYADM_RAT	MYADM_RAT Myeloid-associated differentiation marker OS=Rattus norvegicus GN=Myadm PE=1 SV=1		2			1
>sp Q6:Q6W3B0	DSG4_RAT	DSG4_RAT Desmoglein-4 OS=Rattus norvegicus GN=Dsg4 PE=1 SV=1				1	
>sp Q7:Q71RP1	HPSE_RAT	HPSE_RAT Heparanase OS=Rattus norvegicus GN=Hpse PE=2 SV=1				1	1
>sp Q7:Q793F9	VPS4A_RAT	VPS4A_RAT Vacuolar protein sorting-associated protein 4A OS=Rattus norvegicus GN=Vps4a PE=1 SV=1				1	
>sp Q7:Q7M0E3	DEST_RAT	DEST_RAT Dextrin OS=Rattus norvegicus GN=Dstn PE=1 SV=3		1		1	2
>sp Q7:Q7TNJ2	ABCA7_RAT	ABCA7_RAT ATP-binding cassette sub-family A member 7 OS=Rattus norvegicus GN=Abca7 PE=1 SV=1		1			
>sp Q7:Q7TPB1	TCPD_RAT	TCPD_RAT T-complex protein 1 subunit delta OS=Rattus norvegicus GN=Ctcd1 PE=1 SV=1		1		2	2
>sp Q8:Q80T18	GMFG_RAT	GMFG_RAT Glia maturation factor gamma OS=Rattus norvegicus GN=Gmfg1 PE=1 SV=1		1			
>sp Q8:Q8CFN2	CDC42_RAT	CDC42_RAT Cell division control protein 42 homolog OS=Rattus norvegicus GN=Cdc42 PE=1 SV=1					2
>sp Q8:Q8CG09	MRP1_RAT	MRP1_RAT Multidrug resistance-associated protein 1 OS=Rattus norvegicus GN=Mrp1 PE=1 SV=1				1	
>sp Q8:Q8CGU6	NICA_RAT	NICA_RAT Nicastatin OS=Rattus norvegicus GN=Ncstn PE=1 SV=1		3	1		1
>sp Q8:Q8K3K4	SPB10_RAT	SPB10_RAT Serpin B10 OS=Rattus norvegicus GN=Serpinb10 PE=2 SV=1		2			1
>sp Q8:Q8K3U6	FA7_RAT	FA7_RAT Coagulation factor VII OS=Rattus norvegicus GN=F7 PE=2 SV=1			1	1	2
>sp Q8:Q8R2H5	PHLD_RAT	PHLD_RAT Phosphatidylinositol-glycan-specific phospholipase D OS=Rattus norvegicus GN=Phld PE=1 SV=1	2	4	5	5	3
>sp Q8:Q8R491	EHD3_RAT	EHD3_RAT EH domain-containing protein 3 OS=Rattus norvegicus GN=Ehd3 PE=1 SV=1		2		2	3
>sp Q8:Q8VHQ7	SYTL4_RAT	SYTL4_RAT Synaptotagmin-like protein 4 OS=Rattus norvegicus GN=Syt4 PE=1 SV=1		1			
>sp Q8:Q8VH16	CTL1_RAT	CTL1_RAT Choline transporter-like protein 1 OS=Rattus norvegicus GN=Slc4 PE=1 SV=1		2	2	3	1
>sp Q9:Q91V77	MOT10_RAT	MOT10_RAT Monocarboxylate transporter 10 OS=Rattus norvegicus GN=Slc PE=1 SV=1		1			
>sp Q9:Q91Y81	SEPT2_RAT	SEPT2_RAT Septin-2 OS=Rattus norvegicus GN=Sept2 PE=1 SV=1		1			
>sp Q9:Q91ZN1	COR1A_RAT	COR1A_RAT Coronin-1A OS=Rattus norvegicus GN=Coro1a PE=1 SV=3	2	1	2	3	2
>sp Q9:Q920G0	SKAP2_RAT	SKAP2_RAT Src kinase-associated phosphoprotein 2 OS=Rattus norvegicus GN=Skap2 PE=1 SV=1		1	3	3	3
>sp Q9:Q99J82	ILK_RAT	ILK_RAT Integrin-linked protein kinase OS=Rattus norvegicus GN=Ilk PE=2 SV=1	12	2	4	6	6
>sp Q9:Q99J86	ATRN_RAT	ATRN_RAT Attractin OS=Rattus norvegicus GN=Atrn PE=2 SV=1					1
>sp Q9:Q99MB4	CBWD1_RAT	CBWD1_RAT COBW domain-containing protein 1 OS=Rattus norvegicus GN=CBWD1 PE=1 SV=1				1	1
>sp Q9:Q99ML5	PCYOX_RAT	PCYOX_RAT Prenylcysteine oxidase OS=Rattus norvegicus GN=Pcyox1 PE=1 SV=1			1	2	1
>sp Q9:Q99M50	S14L2_RAT	S14L2_RAT SEC14-like protein 2 OS=Rattus norvegicus GN=Sec14l2 PE=1 SV=1					1
>sp Q9:Q99P74	RB27B_RAT	RB27B_RAT Ras-related protein Rab-27B OS=Rattus norvegicus GN=Rab27b PE=1 SV=1	2	4	1	3	2
>sp Q9:Q99P75	RAB9A_RAT	RAB9A_RAT Ras-related protein Rab-9A OS=Rattus norvegicus GN=Rab9a PE=1 SV=1			1		
>sp Q9:Q99PD4	ARC1A_RAT	ARC1A_RAT Actin-related protein 2/3 complex subunit 1A OS=Rattus norvegicus GN=Arp2/3 PE=1 SV=1				1	
>sp Q9:Q9ER34	ACON_RAT	ACON_RAT Aconitate hydratase, mitochondrial OS=Rattus norvegicus GN=Acon1 PE=1 SV=1					1
>sp Q9:Q9ES21	SAC1_RAT	SAC1_RAT Phosphatidylinositolide phosphatase SAC1 OS=Rattus norvegicus GN=Sac1 PE=1 SV=1		1			

>sp Q9E Q9ET61	C1QR1_RAT	C1QR1_RAT Complement component C1q receptor OS=Rattus norvegicus G	2	1				
>sp Q9J Q9JHW0	PSB7_RAT	PSB7_RAT Proteasome subunit beta type-7 OS=Rattus norvegicus GN=Psm						2
>sp Q9J Q9JHW5	VAMP7_RAT	VAMP7_RAT Vesicle-associated membrane protein 7 OS=Rattus norvegicus	1					
>sp Q9J Q9JHY1	JAM1_RAT	JAM1_RAT Junctional adhesion molecule A OS=Rattus norvegicus GN=F11r	1					1
>sp Q9J Q9JI92	SDCB1_RAT	SDCB1_RAT Syntenin-1 OS=Rattus norvegicus GN=Sdcbp PE=1 SV=1	1					1
>sp Q9J Q9JIR4	RIMS1_RAT	RIMS1_RAT Regulating synaptic membrane exocytosis protein 1 OS=Rattus	1					1
>sp Q9J Q9JIH5	F262_RAT	F262_RAT 6-phosphofructo-2-kinase/fructose-2,6-bisphosphatase 2 OS=Rat	1					1
>sp Q9J Q9JILT0	MYH10_RAT	MYH10_RAT Myosin-10 OS=Rattus norvegicus GN=Myh10 PE=1 SV=1	1	5	2	3	4	
>sp Q9C Q9QUH3	APOA5_RAT	APOA5_RAT Apolipoprotein A-V OS=Rattus norvegicus GN=Apoa5 PE=2 SV=			2	1	1	1
>sp Q9C Q9QWE9	GGT5_RAT	GGT5_RAT Gamma-glutamyltransferase 5 OS=Rattus norvegicus GN=Ggt5 PI	1					
>sp Q9C Q9QXU0	ACTN4_RAT	ACTN4_RAT Alpha-actinin-4 OS=Rattus norvegicus GN=Actn4 PE=1 SV=2	1					1
>sp Q9C Q9QXU8	DC1L1_RAT	DC1L1_RAT Cytoplasmic dynein 1 light intermediate chain 1 OS=Rattus norv	2					
>sp Q9C Q9QYE7	ITAD_RAT	ITAD_RAT Integrin alpha-D OS=Rattus norvegicus GN=Itgad PE=2 SV=1	1					1
>sp Q9C Q9QYI2	RASA3_RAT	RASA3_RAT Ras GTPase-activating protein 3 OS=Rattus norvegicus GN=Rasa	9			2	4	
>sp Q9C Q9QZA2	PDC6I_RAT	PDC6I_RAT Programmed cell death 6-interacting protein OS=Rattus norvegi	1	1	1	1	3	
>sp Q9F Q9R010	CIB1_RAT	CIB1_RAT Calcium and integrin-binding protein 1 OS=Rattus norvegicus GN=	1					1
>sp Q9F Q9R063	PRDX5_RAT	PRDX5_RAT Peroxiredoxin-5, mitochondrial OS=Rattus norvegicus GN=Prdx5	1					
>sp Q9F Q9R189	UN13D_RAT	UN13D_RAT Protein unc-13 homolog D OS=Rattus norvegicus GN=Unc13d P	1			2		
>sp Q9F Q9R1Z0	VDAC3_RAT	VDAC3_RAT Voltage-dependent anion-selective channel protein 3 OS=Rattu	1					
>sp Q9I Q9WTV1	CH3L1_RAT	CH3L1_RAT Chitinase-3-like protein 1 OS=Rattus norvegicus GN=Chi3l1 PE=2	1					
>sp Q9I Q9WU82	CTNB1_RAT	CTNB1_RAT Catenin beta-1 OS=Rattus norvegicus GN=Ctnnb1 PE=1 SV=1			3	1	1	
>sp Q9I Q9WUD9	SRC_RAT	SRC_RAT Proto-oncogene tyrosine-protein kinase Src OS=Rattus norvegicus	3					1
>sp Q9I Q9WUW3	CFAI_RAT	CFAI_RAT Complement factor I OS=Rattus norvegicus GN=Cfi PE=2 SV=1			2	2		
>sp Q9I Q9WV63	KIF2A_RAT	KIF2A_RAT Kinesin-like protein KIF2A OS=Rattus norvegicus GN=Kif2a PE=2	1					
>sp Q9I Q9WVCO	SEPT7_RAT	SEPT7_RAT Septin-7 OS=Rattus norvegicus GN=Sept7 PE=1 SV=1						1
>sp Q9I Q9Z1X1	ESYT1_RAT	ESYT1_RAT Extended synaptotagmin-1 OS=Rattus norvegicus GN=Esyt1 PE=						1
>sp Q9I Q9Z2G8	NP1L1_RAT	NP1L1_RAT Nucleosome assembly protein 1-like 1 OS=Rattus norvegicus GN	2					
>sp Q9I Q9Z2L0	VDAC1_RAT	VDAC1_RAT Voltage-dependent anion-selective channel protein 1 OS=Rattu				1		
>sp Q9I Q9Z2Q1	SC31A_RAT	SC31A_RAT Protein transport protein Sec31A OS=Rattus norvegicus GN=Sec	7			2	1	
>sp Q9I Q9Z2Q7	STX8_RAT	STX8_RAT Syntaxin-8 OS=Rattus norvegicus GN=Sbx8 PE=1 SV=1	1					
>sp Q9I Q9Z2S9	FLOT2_RAT	FLOT2_RAT Flotillin-2 OS=Rattus norvegicus GN=Flot2 PE=1 SV=1	1					
>tr A2V A2VCV7	A2VCV7_RAT	A2VCV7_RAT Mannan-binding lectin serine peptidase 2 OS=Rattus norvegi	1					
>tr A7M A7M778	A7M778_RAT	A7M778_RAT Protein Krt86 OS=Rattus norvegicus GN=Krt86 PE=2 SV=1				1		
>tr B0B B0BMW0	B0BMW0_RAT	B0BMW0_RAT RAB14, member RAS oncogene family OS=Rattus norvegicus	1	1	1	1	1	
>tr B2G B2GUV9	B2GUV9_RAT	B2GUV9_RAT Protein Exoc3l4 OS=Rattus norvegicus GN=Exoc3l4 PE=2 SV=1	1					1
>tr B2G B2GV73	B2GV73_RAT	B2GV73_RAT Actin related protein 2/3 complex, subunit 3 OS=Rattus norve	4	1	2	2		
>tr B2R B2RZB7	B2RZB7_RAT	B2RZB7_RAT Protein Snrpd1 OS=Rattus norvegicus GN=Snrpd1 PE=4 SV=1						1
>tr B4F B4F7A3	B4F7A3_RAT	B4F7A3_RAT Hspc159 protein OS=Rattus norvegicus GN=Lgalsl PE=2 SV=1	1					
>tr B4F B4F7C2	B4F7C2_RAT	B4F7C2_RAT Protein Tubb4a OS=Rattus norvegicus GN=Tubb4a PE=2 SV=1	3			2	2	
>tr B5D B5DEY0	B5DEY0_RAT	B5DEY0_RAT Pls1 protein OS=Rattus norvegicus GN=Pls1 PE=2 SV=1				1	1	
>tr B5D B5DEZ5	B5DEZ5_RAT	B5DEZ5_RAT Protein Zfp51 OS=Rattus norvegicus GN=Zfp54 PE=2 SV=1						
>tr B5D B5DF57	B5DF57_RAT	B5DF57_RAT Erythrocyte protein band 4.2 OS=Rattus norvegicus GN=Epb42	5					1
>tr B5D B5DFI3	B5DFI3_RAT	B5DFI3_RAT Adaptor protein complex AP-1, sigma 1 (Predicted), isoform CR						1
>tr B6R B6RK61	B6RK61_RAT	B6RK61_RAT Myosin heavy chain 7B OS=Rattus norvegicus GN=Myh7b PE=2				1		
>tr C0K C0KUC5	C0KUC5_RAT	C0KUC5_RAT LIM and senescent cell antigen-like domains 1 isoform D OS=R	1					
>tr C0M C0M4B0	C0M4B0_RAT	C0M4B0_RAT Matrix metalloproteinase 19 OS=Rattus norvegicus GN=Mmp:	1					
>tr D3Z D3Z822	D3Z822_RAT	D3Z822_RAT Protein Atr OS=Rattus norvegicus GN=Atr PE=2 SV=2						1
>tr D3Z D3Z8V4	D3Z8V4_RAT	D3Z8V4_RAT NCK associated protein 1 like (Predicted) OS=Rattus norvegi	1					
>tr D3Z D3Z9K9	D3Z9K9_RAT	D3Z9K9_RAT Glycerophosphodiester phosphodiesterase domain containing			1			
>tr D3Z D3ZAN3	D3ZAN3_RAT	D3ZAN3_RAT Alpha glucosidase 2 alpha neutral subunit (Predicted) OS=Ratt	1			1	1	
>tr D3Z D3ZAZ1	D3ZAZ1_RAT	D3ZAZ1_RAT Formin-like 1 (Predicted), isoform CRA_a OS=Rattus norvegi	1					
>tr D3Z D3ZCD6	D3ZCD6_RAT	D3ZCD6_RAT RCG21069 OS=Rattus norvegicus GN=RCG_21069 PE=4 SV=2			1	1		
>tr D3Z D3ZCH9	D3ZCH9_RAT	D3ZCH9_RAT Protein Cd177 OS=Rattus norvegicus GN=Cd177 PE=4 SV=2	3					
>tr D3Z D3ZCV0	D3ZCV0_RAT	D3ZCV0_RAT Protein Actn2 OS=Rattus norvegicus GN=Actn2 PE=4 SV=1				1	1	
>tr D3Z D3ZD84	D3ZD84_RAT	D3ZD84_RAT Protein Lrig1 (Fragment) OS=Rattus norvegicus GN=Lrig1 PE=4	3					
>tr D3Z D3ZE09	D3ZE09_RAT	D3ZE09_RAT Protein Tln2 OS=Rattus norvegicus GN=Tln2 PE=2 SV=2	1					
>tr D3Z D3ZEP5	D3ZEP5_RAT	D3ZEP5_RAT Protein Igkv19-93 OS=Rattus norvegicus GN=Igkv19-93 PE=4 SV	2	2	3			
>tr D3Z D3ZF84	D3ZF84_RAT	D3ZF84_RAT Uncharacterized protein OS=Rattus norvegicus GN=LOC100365	1			1		
>tr D3Z D3ZFF8	D3ZFF8_RAT	D3ZFF8_RAT Uncharacterized protein OS=Rattus norvegicus PE=4 SV=1	1	2	1			
>tr D3Z D3ZFH5	D3ZFH5_RAT	D3ZFH5_RAT Protein Itih2 OS=Rattus norvegicus GN=Itih2 PE=2 SV=2	6	5	4	5	2	
>tr D3Z D3ZGE2	D3ZGE2_RAT	D3ZGE2_RAT Myeloperoxidase (Mapped) OS=Rattus norvegicus GN=Mppo PE						1
>tr D3Z D3ZH16	D3ZH16_RAT	D3ZH16_RAT Uncharacterized protein OS=Rattus norvegicus GN=LOC68824:			1			
>tr D3Z D3ZHA0	D3ZHA0_RAT	D3ZHA0_RAT Protein Flnc OS=Rattus norvegicus GN=Flnc PE=2 SV=1				1		
>tr D3Z D3ZHM9	D3ZHM9_RAT	D3ZHM9_RAT Uncharacterized protein OS=Rattus norvegicus PE=4 SV=2				1		
>tr D3Z D3ZHT2	D3ZHT2_RAT	D3ZHT2_RAT Protein Triobp OS=Rattus norvegicus GN=Triobp PE=2 SV=2				1		
>tr D3Z D3ZHX3	D3ZHX3_RAT	D3ZHX3_RAT Protein Diras2 OS=Rattus norvegicus GN=Diras2 PE=4 SV=1		1				
>tr D3Z D3ZID4	D3ZID4_RAT	D3ZID4_RAT Protein Nipbl (Fragment) OS=Rattus norvegicus GN=Nipbl PE=2	1					
>tr D3Z D3ZIF5	D3ZIF5_RAT	D3ZIF5_RAT Adaptor-related protein complex 3, beta 1 subunit (Predicted),	1					
>tr D3Z D3ZIP8	D3ZIP8_RAT	D3ZIP8_RAT Protein Endod1 OS=Rattus norvegicus GN=Endod1 PE=4 SV=1	1					1
>tr D3Z D3ZJF8	D3ZJF8_RAT	D3ZJF8_RAT Protein Fcgbp OS=Rattus norvegicus GN=Fcgbp PE=2 SV=2			1			
>tr D3Z D3ZK57	D3ZK57_RAT	D3ZK57_RAT Uncharacterized protein OS=Rattus norvegicus GN=LOC100365:	1			1		
>tr D3Z D3ZK68	D3ZK68_RAT	D3ZK68_RAT Uncharacterized protein OS=Rattus norvegicus GN=LOC100366	1	1	2	1		
>tr D3Z D3ZKC9	D3ZKC9_RAT	D3ZKC9_RAT Protein RGD1559904 (Fragment) OS=Rattus norvegicus GN=RC			1			
>tr D3Z D3ZKG5	D3ZKG5_RAT	D3ZKG5_RAT Protein Parvb OS=Rattus norvegicus GN=Parvb PE=4 SV=1	1	6		1	2	
>tr D3Z D3ZKIO	D3ZKIO_RAT	D3ZKIO_RAT Uncharacterized protein OS=Rattus norvegicus GN=RT1-CE16 P			1	1		
>tr D3Z D3ZKJ8	D3ZKJ8_RAT	D3ZKJ8_RAT Protein Neil3 OS=Rattus norvegicus GN=Neil3 PE=4 SV=2				1		
>tr D3Z D3ZKN6	D3ZKN6_RAT	D3ZKN6_RAT Protein 1700007G11Rik OS=Rattus norvegicus GN=LOC685158			1			
>tr D3Z D3ZM39	D3ZM39_RAT	D3ZM39_RAT Protein Dsg1b OS=Rattus norvegicus GN=Dsg1 PE=2 SV=1			1		1	
>tr D3Z D3ZMIO	D3ZMIO_RAT	D3ZMIO_RAT Protein Gm6484 OS=Rattus norvegicus GN=LOC100361444 PE:				1	1	
>tr D3Z D3ZMQ3	D3ZMQ3_RAT	D3ZMQ3_RAT Protein Itga4 OS=Rattus norvegicus GN=Itga4 PE=2 SV=1	2					
>tr D3Z D3ZMS7	D3ZMS7_RAT	D3ZMS7_RAT Uncharacterized protein (Fragment) OS=Rattus norvegicus PE:	1	2	2	2	2	2
>tr D3Z D3ZNP4	D3ZNP4_RAT	D3ZNP4_RAT Protein Fam122c OS=Rattus norvegicus GN=Fam122c PE=4 SV:	1			1		
>tr D3Z D3ZP45	D3ZP45_RAT	D3ZP45_RAT Polymerase (RNA) III (DNA directed) polypeptide E (Predicted)				1		
>tr D3Z D3ZPG2	D3ZPG2_RAT	D3ZPG2_RAT Protein Rapsn OS=Rattus norvegicus GN=Rapsn PE=4 SV=1	1					
>tr D3Z D3ZPL7	D3ZPL7_RAT	D3ZPL7_RAT Down syndrome cell adhesion molecule-like 1 (Predicted) OS=f			1			
>tr D3Z D3ZPR0	D3ZPR0_RAT	D3ZPR0_RAT Chromosome segregation 1-like (S. cerevisiae) (Predicted) OS=						1
>tr D3Z D3ZPS3	D3ZPS3_RAT	D3ZPS3_RAT Protein LOC299567 OS=Rattus norvegicus GN=LOC299567 PE=	2	5	1	3	3	
>tr D3Z D3ZQ25	D3ZQ25_RAT	D3ZQ25_RAT Fibulin 1 (Predicted) OS=Rattus norvegicus GN=Fbln1 PE=4 SV:			1	1	1	
>tr D3Z D3ZQF9	D3ZQF9_RAT	D3ZQF9_RAT Arachidonate lipoxygenase, epidermal (Predicted) OS=Rattus r	1					
>tr D3Z D3ZQM9	D3ZQM9_RAT	D3ZQM9_RAT Uncharacterized protein OS=Rattus norvegicus PE=4 SV=1			1	1		
>tr D3Z D3ZRX9	D3ZRX9_RAT	D3ZRX9_RAT Protein Cnn2 OS=Rattus norvegicus GN=Cnn2 PE=4 SV=2	1			1		
>tr D3Z D3ZSF4	D3ZSF4_RAT	D3ZSF4_RAT Protein Col13a1 OS=Rattus norvegicus GN=Col13a1 PE=2 SV=2				1		

>tr D3Z D3ZSY5	D3ZSY5_RAT	D3ZSY5_RAT Protein Krt84 OS=Rattus norvegicus GN=Krt84 PE=2 SV=2				2		
>tr D3Z D3ZT94	D3ZT94_RAT	D3ZT94_RAT Pituitary homeobox 3 OS=Rattus norvegicus GN=Ptx3 PE=4 SV=				1		
>tr D3Z D3ZTN1	D3ZTN1_RAT	D3ZTN1_RAT Protein Tesc OS=Rattus norvegicus GN=Tesc PE=4 SV=1			1			
>tr D3Z D3ZU90	D3ZU90_RAT	D3ZU90_RAT Uncharacterized protein OS=Rattus norvegicus GN=Fer115 PE=					1	
>tr D3Z D3ZUH1	D3ZUH1_RAT	D3ZUH1_RAT Protein Nlrp4a OS=Rattus norvegicus GN=Nlrp4a PE=4 SV=1					1	
>tr D3Z D3ZUL1	D3ZUL1_RAT	D3ZUL1_RAT Protein Ccdc124 OS=Rattus norvegicus GN=Ccdc124 PE=4 SV=					1	
>tr D3Z D3ZVD5	D3ZVD5_RAT	D3ZVD5_RAT Protein Lrrc32 OS=Rattus norvegicus GN=Lrrc32 PE=4 SV=1			1			
>tr D3Z D3ZWC1	D3ZWC1_RAT	D3ZWC1_RAT Uncharacterized protein OS=Rattus norvegicus GN=LOC10036			1	2	2	1
>tr D3Z D3ZWE3	D3ZWE3_RAT	D3ZWE3_RAT Premature ovarian failure 1B (Predicted) OS=Rattus norvegicu					1	1
>tr D3Z D3ZWJ9	D3ZWJ9_RAT	D3ZWJ9_RAT Protein RGD1306151 OS=Rattus norvegicus GN=RGD1306151			2			
>tr D3Z D3ZW1	D3ZW1_RAT	D3ZW1_RAT Protein Skil OS=Rattus norvegicus GN=Skil PE=4 SV=1						1
>tr D3Z D3ZX38	D3ZX38_RAT	D3ZX38_RAT Prefoldin 1 (Predicted) OS=Rattus norvegicus GN=Pfdn1 PE=4 S			1			
>tr D3Z D3ZX82	D3ZX82_RAT	D3ZX82_RAT Cytoplasmic FMR1 interacting protein 2 (Predicted) OS=Rattus			1			
>tr D3Z D3ZY51	D3ZY51_RAT	D3ZY51_RAT Plakophilin 1 (Predicted) OS=Rattus norvegicus GN=Pkp1 PE=4					2	2
>tr D3Z D3ZY10	D3ZY10_RAT	D3ZY10_RAT Grancalcin (Predicted) OS=Rattus norvegicus GN=Gca PE=4 SV=						1
>tr D3Z D3ZYQ3	D3ZYQ3_RAT	D3ZYQ3_RAT Protein Tnfai2 OS=Rattus norvegicus GN=Tnfai2 PE=4 SV=2					1	
>tr D3Z D3ZYQ9	D3ZYQ9_RAT	D3ZYQ9_RAT Protein Rnf20 OS=Rattus norvegicus GN=Rnf20 PE=2 SV=1			1			
>tr D3Z D3ZYT6	D3ZYT6_RAT	D3ZYT6_RAT Protein Trem1 (Fragment) OS=Rattus norvegicus GN=Trem1 P			1			
>tr D3Z D3ZL5	D4A1R8_RAT	D3ZL5_RAT Protein Gpihbp1 OS=Rattus norvegicus GN=Gpihbp1 PE=4 SV=1			1			
>tr D3Z D3ZY7	D3ZY7_RAT	D3ZY7_RAT Protein Kans11 OS=Rattus norvegicus GN=Kans11 PE=4 SV=1					1	
>tr D4A D4A0T3	D4A0T3_RAT	D4A0T3_RAT Protein Fhod1 OS=Rattus norvegicus GN=Fhod1 PE=4 SV=2			1		1	2
>tr D4A D4A0Z7	D4A0Z7_RAT	D4A0Z7_RAT Biregional cell adhesion molecule-related/down-regulated by c						1
>tr D4A D4A115	D4A115_RAT	D4A115_RAT Protein Col6a3 OS=Rattus norvegicus GN=Col6a3 PE=2 SV=2			1			1
>tr D4A D4A133	D4A133_RAT	D4A133_RAT Protein Atp6v1a OS=Rattus norvegicus GN=Atp6v1a PE=3 SV=					1	1
>tr D4A D4A1R8	D4A1R8_RAT	D4A1R8_RAT Protein Cpne1 OS=Rattus norvegicus GN=Cpne1 PE=4 SV=1			1			
>tr D4A D4A206	D4A206_RAT	D4A206_RAT Protein Tcof1 OS=Rattus norvegicus GN=Tcof1 PE=4 SV=2					1	
>tr D4A D4A2R0	D4A2R0_RAT	D4A2R0_RAT Protein Mpl OS=Rattus norvegicus GN=Mpl PE=4 SV=2			1			
>tr D4A D4A383	D4A383_RAT	D4A383_RAT Protein Ttyh3 OS=Rattus norvegicus GN=Ttyh3 PE=4 SV=1			1			
>tr D4A D4A3E0	D4A3E0_RAT	D4A3E0_RAT Protein Mmnr1 OS=Rattus norvegicus GN=Mmnr1 PE=4 SV=1			1	3	1	1
>tr D4A D4A4L6	D4A4L6_RAT	D4A4L6_RAT Uncharacterized protein OS=Rattus norvegicus PE=4 SV=1			1	1	1	
>tr D4A D4A4Y3	D4A4Y3_RAT	D4A4Y3_RAT Membrane-spanning 4-domains, subfamily A, member 1 (Pred			1			
>tr D4A D4A678	D4A678_RAT	D4A678_RAT Protein Spta1 OS=Rattus norvegicus GN=Spta1 PE=2 SV=2			1			
>tr D4A D4A6C5	D4A6C5_RAT	D4A6C5_RAT Protein Arhgap1 OS=Rattus norvegicus GN=Arhgap1 PE=2 SV=			2	1	1	1
>tr D4A D4A6X1	D4A6X1_RAT	D4A6X1_RAT Dysferlin (Predicted), isoform CRA_a OS=Rattus norvegicus GN			4			
>tr D4A D4A781	D4A781_RAT	D4A781_RAT Protein Ipo5 OS=Rattus norvegicus GN=Ipo5 PE=4 SV=1				1		1
>tr D4A D4A7E7	D4A7E7_RAT	D4A7E7_RAT Protein Barx2-ps1 OS=Rattus norvegicus GN=Barx2 PE=3 SV=1			1			
>tr D4A D4A7X9	D4A7X9_RAT	D4A7X9_RAT Myosin IF (Predicted) OS=Rattus norvegicus GN=Myo1f PE=4 S						1
>tr D4A D4A8G5	D4A8G5_RAT	D4A8G5_RAT Protein Tgfb1 OS=Rattus norvegicus GN=Tgfb1 PE=4 SV=2			1			3
>tr D4A D4A8H8	D4A8H8_RAT	D4A8H8_RAT Cytoplasmic FMR1 interacting protein 1 (Predicted) OS=Rattus			6			2
>tr D4A D4A9A6	D4A9A6_RAT	D4A9A6_RAT Protein Epb4.1 OS=Rattus norvegicus GN=Epb4.1 PE=4 SV=2			1			
>tr D4A D4AA06	D4AA06_RAT	D4AA06_RAT Nuclear receptor binding SET domain protein 1 (Predicted), isc						1
>tr D4A D4AAI2	D4AAI2_RAT	D4AAI2_RAT Histocompatibility (Minor) HA-1 (Predicted), isoform CRA_b OS						1
>tr D4A D4AAV9	D4AAV9_RAT	D4AAV9_RAT Protein Tspan9 OS=Rattus norvegicus GN=Tspan9 PE=4 SV=1			1	1		
>tr D4A D4AA7	D4AA7_RAT	D4AA7_RAT Phosphatidylinositol glycan, class A (Mapped), isoform CRA_a			1			
>tr D4A D4ABM3	D4ABM3_RAT	D4ABM3_RAT Dishevelled associated activator of morphogenesis 1 (Predict			3			1
>tr D4A D4ACB8	D4ACB8_RAT	D4ACB8_RAT Chaperonin subunit 8 (Theta) (Predicted), isoform CRA_a OS=F			1			
>tr D4A D4ADG4	D4ADG4_RAT	D4ADG4_RAT MutL homolog 3 (E. coli) (Predicted), isoform CRA_a OS=Rattu			1		1	
>tr D4A D4ADK9	D4ADK9_RAT	D4ADK9_RAT Uncharacterized protein OS=Rattus norvegicus GN=LOC10036				1		
>tr D4A D4AE68	D4AE68_RAT	D4AE68_RAT Guanine nucleotide binding protein, alpha q polypeptide, isofc			1	2		2
>tr E3V E3VX78	E3VX78_HETGA	E3VX78_HETGA Transferrin receptor protein 1 OS=Heterocephalus glaber Gf			2			
>tr E9P E9P5T1	E9P5T1_RAT	E9P5T1_RAT Protein RGD1310507 OS=Rattus norvegicus GN=RGD1310507 F			3	3	2	3
>tr E9P E9PT10	E9PT10_RAT	E9PT10_RAT Protein RT1-CE4 OS=Rattus norvegicus GN=LOC100364500 PE=			1			1
>tr E9P E9PTF7	E9PTF7_RAT	E9PTF7_RAT Protein Btk OS=Rattus norvegicus GN=Btk PE=2 SV=2						1
>tr E9P E9PTF9	E9PTF9_RAT	E9PTF9_RAT Protein Wasf2 OS=Rattus norvegicus GN=Wasf2 PE=2 SV=2						1
>tr E9P E9PTT0	E9PTT0_RAT	E9PTT0_RAT Protein Zdhhc17 OS=Rattus norvegicus GN=Zdhhc17 PE=2 SV=1				1		
>tr E9P E9PTY0	E9PTY0_RAT	E9PTY0_RAT Protein Lrrcc1 OS=Rattus norvegicus GN=Lrrcc1 PE=4 SV=2					1	
>tr E9P E9PTY6	E9PTY6_RAT	E9PTY6_RAT Protein Fry (Fragment) OS=Rattus norvegicus GN=Fry PE=2 SV=			1			
>tr E9P E9PTZ7	E9PTZ7_RAT	E9PTZ7_RAT Protein RT1-CE2 OS=Rattus norvegicus GN=RT1-CE2 PE=2 SV=2				1		
>tr E9P E9PU06	E9PU06_RAT	E9PU06_RAT Protein Ccdc148 OS=Rattus norvegicus GN=Ccdc148 PE=4 SV=				1		
>tr F1L F1LMR0	F1LMR0_RAT	F1LMR0_RAT Protein Itga2 (Fragment) OS=Rattus norvegicus GN=Itga2 PE=3			3	2	3	1
>tr F1L F1LNG7	F1LNG7_RAT	F1LNG7_RAT Protein Gna13 (Fragment) OS=Rattus norvegicus GN=Gna13 Pf			2	1		1
>tr F1L F1LNL3	F1LNL3_RAT	F1LNL3_RAT Protein Abca1 OS=Rattus norvegicus GN=Abca1 PE=2 SV=2			1			
>tr F1L F1LNR0	F1LNR0_RAT	F1LNR0_RAT Uncharacterized protein OS=Rattus norvegicus GN=Clasp1 PE=			1			
>tr F1L F1LP42	F1LP42_RAT	F1LP42_RAT Hedgehog protein OS=Rattus norvegicus GN=Ihh PE=3 SV=2					1	
>tr F1L F1LP69	F1LP69_RAT	F1LP69_RAT Uncharacterized protein OS=Rattus norvegicus GN=LOC297568			2	4	2	3
>tr F1L F1LQ70	F1LQ70_RAT	F1LQ70_RAT Arachidonate 12-lipoxygenase, leukocyte-type OS=Rattus norv			2	8	7	6
>tr F1L F1LQ75	F1LQ75_RAT	F1LQ75_RAT Protein Myo1g OS=Rattus norvegicus GN=Myo1g PE=2 SV=2				3		
>tr F1L F1LQSO	F1LQSO_RAT	F1LQSO_RAT Protein Nmi OS=Rattus norvegicus GN=Nmi PE=2 SV=1			1			1
>tr F1L F1LQT4	F1LQT4_RAT	F1LQT4_RAT Protein Cpn2 OS=Rattus norvegicus GN=Cpn2 PE=4 SV=1			5	4	3	6
>tr F1L F1LQZ2	F1LQZ2_RAT	F1LQZ2_RAT Chordin-like protein 1 OS=Rattus norvegicus GN=Chrdl1 PE=2 S					1	
>tr F1L F1LR92	F1LR92_RAT	F1LR92_RAT Serine protease inhibitor A3M (Fragment) OS=Rattus norvegicu			1	1		1
>tr F1L F1LRA5	F1LRA5_RAT	F1LRA5_RAT Lipid phosphate phosphatase-related protein type 2 OS=Rattus			1	1	1	
>tr F1L F1LRE2	F1LRE2_RAT	F1LRE2_RAT Insulin-like growth factor-binding protein complex acid labile s				2	1	2
>tr F1L F1LRW9	F1LRW9_RAT	F1LRW9_RAT Protein Pi4ka OS=Rattus norvegicus GN=Pi4ka PE=2 SV=2			1			
>tr F1L F1LSA5	F1LSA5_RAT	F1LSA5_RAT Protein Scgb2b3 OS=Rattus norvegicus GN=Scgb2b3 PE=4 SV=2					1	1
>tr F1L F1LSB2	F1LSB2_RAT	F1LSB2_RAT Angiotensin II, isoform CRA_a OS=Rattus norvegicus GN=Angp						1
>tr F1L F1LT85	F1LT85_RAT	F1LT85_RAT Uncharacterized protein (Fragment) OS=Rattus norvegicus PE=			1	1	2	1
>tr F1L F1LW26	F1LW26_RAT	F1LW26_RAT RCG53373 OS=Rattus norvegicus GN=RCG_53373 PE=4 SV=2			1	1	1	
>tr F1L F1LWD1	F1LWD1_RAT	F1LWD1_RAT Uncharacterized protein (Fragment) OS=Rattus norvegicus GN					1	
>tr F1L F1LWW1	F1LWW1_RAT	F1LWW1_RAT Uncharacterized protein (Fragment) OS=Rattus norvegicus PE				1	1	
>tr F1L F1LX59	F1LX59_RAT	F1LX59_RAT Uncharacterized protein (Fragment) OS=Rattus norvegicus PE=					1	
>tr F1L F1LXF5	F1LXF5_RAT	F1LXF5_RAT Protein Get4 OS=Rattus norvegicus GN=Get4 PE=4 SV=2			1			1
>tr F1L F1LXP8	F1LXP8_RAT	F1LXP8_RAT Protein Arhgap18 OS=Rattus norvegicus GN=Arhgap18 PE=4 SV			1	1		1
>tr F1L F1LYQ4	F1LYQ4_RAT	F1LYQ4_RAT Protein RGD1564515 (Fragment) OS=Rattus norvegicus GN=RG			1	1	1	2
>tr F1L F1LYZ8	F1LYZ8_RAT	F1LYZ8_RAT Protein RGD1565310 OS=Rattus norvegicus GN=RGD1565310 P				1	1	
>tr F1M F1M0Q9	F1M0Q9_RAT	F1M0Q9_RAT Protein Pm201 (Fragment) OS=Rattus norvegicus GN=Pm20c				3	1	2
>tr F1M F1M0U6	F1M0U6_RAT	F1M0U6_RAT Uncharacterized protein (Fragment) OS=Rattus norvegicus PE			1			
>tr F1M F1M171	F1M171_RAT	F1M171_RAT Protein RGD1311933 OS=Rattus norvegicus GN=RGD1311933					1	1
>tr F1M F1M1G3	F1M1G3_RAT	F1M1G3_RAT Uncharacterized protein (Fragment) OS=Rattus norvegicus PE			1	1	1	1
>tr F1M F1M1G5	F1M1G5_RAT	F1M1G5_RAT Protein Kctd16 OS=Rattus norvegicus GN=Kctd16 PE=4 SV=2			1			
>tr F1M F1M296	F1M296_RAT	F1M296_RAT Protein Cthr3 OS=Rattus norvegicus GN=LOC683745 PE=4 SV=			2	2	2	2
>tr F1M F1M2L5	F1M2L5_RAT	F1M2L5_RAT L-lactate dehydrogenase OS=Rattus norvegicus PE=3 SV=2						1

>tr F1M1M335	F1M335_RAT	F1M335_RAT Protein Pxdn OS=Rattus norvegicus GN=Pxdn PE=4 SV=2			1		1
>tr F1M1M375	F1M375_RAT	F1M375_RAT Protein Ifit1b (Fragment) OS=Rattus norvegicus GN=Ifit1b PE=		1			
>tr F1M1M3H2	F1M3H2_RAT	F1M3H2_RAT Uncharacterized protein (Fragment) OS=Rattus norvegicus GN=		1	1		
>tr F1M1M585	F1M585_RAT	F1M585_RAT Protein Atp8a1 (Fragment) OS=Rattus norvegicus GN=Atp8a1		1			
>tr F1M1M5Z5	F1M5Z5_RAT	F1M5Z5_RAT Anoctamin OS=Rattus norvegicus GN=Ano6 PE=3 SV=2		2	1	1	1
>tr F1M1M663	F1M663_RAT	F1M663_RAT Uncharacterized protein OS=Rattus norvegicus PE=4 SV=2		1	1	1	1
>tr F1M1M6N0	F1M6N0_RAT	F1M6N0_RAT Protein LOC686143 OS=Rattus norvegicus GN=LOC686143 PE=		1			
>tr F1M1M775	F1M775_RAT	F1M775_RAT Protein Diap1 OS=Rattus norvegicus GN=Diap1 PE=2 SV=2		3			2
>tr F1M1M7B3	F1M7B3_RAT	F1M7B3_RAT Uncharacterized protein (Fragment) OS=Rattus norvegicus PE=		1	2	2	1
>tr F1M1M8G0	F1M8G0_RAT	F1M8G0_RAT Protein Phtf1 OS=Rattus norvegicus GN=Phtf1 PE=2 SV=1		1			1
>tr F1M1M8W5	F1M8W5_RAT	F1M8W5_RAT Disintegrin and metalloproteinase domain-containing protei		1			
>tr F1M1M949	F1M949_RAT	F1M949_RAT Protein Ckap5 OS=Rattus norvegicus GN=Ckap5 PE=2 SV=2					1
>tr F1M1M9A4	F1M9A4_RAT	F1M9A4_RAT Uncharacterized protein OS=Rattus norvegicus GN=Mrp11 PE=			1	1	
>tr F1M1M9V7	F1M9V7_RAT	F1M9V7_RAT Protein Npepps OS=Rattus norvegicus GN=Npepps PE=2 SV=1					1
>tr F1M1MA10	F1MA10_RAT	F1MA10_RAT Protein Art4 OS=Rattus norvegicus GN=Art4 PE=2 SV=2		1		1	1
>tr F1M1MAJ2	F1MAJ2_RAT	F1MAJ2_RAT Uncharacterized protein OS=Rattus norvegicus PE=2 SV=2				1	
>tr F1M1MAP6	F1MAP6_RAT	F1MAP6_RAT Protein Ccdc173 OS=Rattus norvegicus GN=Ccdc173 PE=4 SV=		1			
>tr F2Z:F2Z3Q8	F2Z3Q8_RAT	F2Z3Q8_RAT Importin subunit beta-1 OS=Rattus norvegicus GN=Kpnb1 PE=4		1	2	1	3
>tr F6Q:F6Q1N1	F6Q1N1_RAT	F6Q1N1_RAT Protein F13b OS=Rattus norvegicus GN=F13b PE=4 SV=1				1	1
>tr F7E:F7E7EWC1	F7E7EWC1_RAT	F7E7EWC1_RAT Protein Vasp OS=Rattus norvegicus GN=Vasp PE=4 SV=1				1	
>tr F7F:F7F5B5	F7F5B5_RAT	F7F5B5_RAT Protein RGD1565355 OS=Rattus norvegicus GN=RGD1565355 F				1	1
>tr F8W:F8WF2	F8WF2_RAT	F8WF2_RAT Beta-soluble NSF attachment protein OS=Rattus norvegicus C		2			
>tr G3V:G3V615	G3V615_RAT	G3V615_RAT Complement factor B, isoform CRA_b OS=Rattus norvegicus Gi		1	1	2	
>tr G3V:G3V624	G3V624_RAT	G3V624_RAT Coronin OS=Rattus norvegicus GN=Coro1c PE=3 SV=1					1
>tr G3V:G3V6A9	G3V6A9_RAT	G3V6A9_RAT Microfibrillar-associated protein 4 OS=Rattus norvegicus GN=L		1		1	2
>tr G3V:G3V6B2	G3V6B2_RAT	G3V6B2_RAT Serine (Or cysteine) peptidase inhibitor, clade B (Ovalbumin), I					1
>tr G3V:G3V6K6	G3V6K6_RAT	G3V6K6_RAT Epidermal growth factor receptor, isoform CRA_b OS=Rattus n		2			
>tr G3V:G3V6U9	G3V6U9_RAT	G3V6U9_RAT Protein LOC100910833 OS=Rattus norvegicus GN=LOC100910					1
>tr G3V:G3V712	G3V712_RAT	G3V712_RAT Keratin complex 2, basic, gene 7, isoform CRA_a OS=Rattus no				1	1
>tr G3V:G3V761	G3V761_RAT	G3V761_RAT Protein Ifi27 OS=Rattus norvegicus GN=Ifi27 PE=4 SV=1				1	1
>tr G3V:G3V7C6	G3V7C6_RAT	G3V7C6_RAT RCG45400 OS=Rattus norvegicus GN=Tubb4b PE=3 SV=1				1	
>tr G3V:G3V7G9	G3V7G9_RAT	G3V7G9_RAT Eukaryotic translation initiation factor 3 subunit L OS=Rattus r					1
>tr G3V:G3V7Q7	G3V7Q7_RAT	G3V7Q7_RAT IQ motif containing GTPase activating protein 1 (Predicted), is		1	2		3
>tr G3V:G3V7U6	G3V7U6_RAT	G3V7U6_RAT Calpain 5, isoform CRA_a OS=Rattus norvegicus GN=Capn5 PE					1
>tr G3V:G3V811	G3V811_RAT	G3V811_RAT Coagulation factor XIII A chain OS=Rattus norvegicus GN=F13a		1			2
>tr G3V:G3V8Z5	G3V8Z5_RAT	G3V8Z5_RAT Uncharacterized protein OS=Rattus norvegicus PE=4 SV=2		1	1		1
>tr G3V:G3V9C0	G3V9C0_RAT	G3V9C0_RAT Histone H2A OS=Rattus norvegicus GN=Hist1h2ai PE=3 SV=1		1	1	2	2
>tr G3V:G3V9D8	G3V9D8_RAT	G3V9D8_RAT Protein Ces2c OS=Rattus norvegicus GN=Ces2c PE=4 SV=1		1			
>tr G3V:G3V9N8	G3V9N8_RAT	G3V9N8_RAT AP-1 complex subunit beta-1 OS=Rattus norvegicus GN=Ap1b:		1	1	1	1
>tr G3V:G3V9N9	G3V9N9_RAT	G3V9N9_RAT Mannosidase 1, alpha (Predicted), isoform CRA_a OS=Rattus r		1			
>tr G5A:G5AJU5	G5AJU5_HETGA	G5AJU5_HETGA Coiled-coil domain-containing protein 146 OS=Heteroceph					1
>tr G5A:G5AJW1	G5AJW1_HETGA	G5AJW1_HETGA Putative nascent polypeptide-associated complex subunit 4		1			
>tr G5A:G5AK16	G5AK16_HETGA	G5AK16_HETGA Xylosyltransferase 1 OS=Heterocephalus glaber GN=GW7_1				1	
>tr G5A:G5ALE6	G5ALE6_HETGA	G5ALE6_HETGA Leucine-rich repeat-containing protein 15 (Fragment) OS=H				1	
>tr G5A:G5ALL7	G5ALL7_HETGA	G5ALL7_HETGA Inositol 1,4,5-trisphosphate receptor type 3 (Fragment) OS=				1	
>tr G5A:G5ALQ5	G5ALQ5_HETGA	G5ALQ5_HETGA Neural cell adhesion molecule L1-like protein OS=Hetero				1	
>tr G5A:G5ALT1	G5ALT1_HETGA	G5ALT1_HETGA Keratin, type II cytoskeletal 2 oral (Fragment) OS=Hetero				1	1
>tr G5A:G5AN51	G5AN51_HETGA	G5AN51_HETGA Multiple epidermal growth factor-like domains 11 OS=Hete		1			
>tr G5A:G5AN53	G5AN53_HETGA	G5AN53_HETGA C-myc promoter-binding protein OS=Heterocephalus glabe		1			
>tr G5A:G5ANZ2	G5ANZ2_HETGA	G5ANZ2_HETGA F-box only protein 43 OS=Heterocephalus glaber GN=GW7_				1	
>tr G5A:G5AP17	G5AP17_HETGA	G5AP17_HETGA 39S ribosomal protein L16, mitochondrial OS=Heteroceph					1
>tr G5A:G5AP36	G5AP36_HETGA	G5AP36_HETGA Macrophage-expressed gene 1 protein OS=Heterocephalus				1	
>tr G5A:G5API6	G5API6_HETGA	G5API6_HETGA Ankyrin repeat domain-containing protein 11 OS=Hetero					1
>tr G5A:G5AQ29	G5AQ29_HETGA	G5AQ29_HETGA Retinoic acid receptor RXR-gamma OS=Heterocephalus gl		1			
>tr G5A:G5AQF4	G5AQF4_HETGA	G5AQF4_HETGA CMP-N-acetylneuraminase-beta-1,4-galactoside alpha-2,3-				1	
>tr G5A:G5AQJ8	G5AQJ8_HETGA	G5AQJ8_HETGA CTP synthase 1 OS=Heterocephalus glaber GN=GW7_0438		1			
>tr G5A:G5ARZ0	G5ARZ0_HETGA	G5ARZ0_HETGA Aldehyde dehydrogenase family 1 member A3 OS=Hetero		1			
>tr G5A:G5ARZ6	G5ARZ6_HETGA	G5ARZ6_HETGA Putative threonyl-tRNA synthetase 2, cytoplasmic OS=Hete				1	
>tr G5A:G5ASE7	G5ASE7_HETGA	G5ASE7_HETGA Glycosyltransferase 25 family member 3 OS=Heterocephalu					1
>tr G5A:G5ASL9	G5ASL9_HETGA	G5ASL9_HETGA Myosin-6 OS=Heterocephalus glaber GN=GW7_06150 PE=4					1
>tr G5A:G5ASM3	G5ASM3_HETGA	G5ASM3_HETGA AP-1 complex subunit gamma-like 2 OS=Heterocephalus gl		1	1		
>tr G5A:G5ASU0	G5ASU0_HETGA	G5ASU0_HETGA Betaine-homocysteine S-methyltransferase 1 OS=Hetero		1			
>tr G5A:G5AT20	G5AT20_HETGA	G5AT20_HETGA Uncharacterized protein (Fragment) OS=Heterocephalus gl					1
>tr G5A:G5AU68	G5AU68_HETGA	G5AU68_HETGA Xaa-Pro aminopeptidase 2 OS=Heterocephalus glaber GN=				1	
>tr G5A:G5AUQ4	G5AUQ4_HETGA	G5AUQ4_HETGA E3 ubiquitin-protein ligase TRIM63 OS=Heterocephalus gla				1	
>tr G5A:G5AVD8	G5AVD8_HETGA	G5AVD8_HETGA Filamin-A OS=Heterocephalus glaber GN=GW7_19822 PE=4		1	1	1	1
>tr G5A:G5AVK8	G5AVK8_HETGA	G5AVK8_HETGA Sperm motility kinase 3 OS=Heterocephalus glaber GN=GW		1			
>tr G5A:G5AVU8	G5AVU8_HETGA	G5AVU8_HETGA Growth arrest-specific protein 6 OS=Heterocephalus glabe				1	
>tr G5A:G5AW88	G5AW88_HETGA	G5AW88_HETGA Uncharacterized protein (Fragment) OS=Heterocephalus g				1	
>tr G5A:G5AWC0	G5AWC0_HETGA	G5AWC0_HETGA Annexin OS=Heterocephalus glaber GN=GW7_00155 PE=3					1
>tr G5A:G5AWP3	G5AWP3_HETGA	G5AWP3_HETGA Transmembrane protein 132D (Fragment) OS=Heteroceph				1	
>tr G5A:G5AWW9	G5AWW9_HETGA	G5AWW9_HETGA Ribonuclease P/MRP protein subunit POP5 OS=Hetero		1			
>tr G5A:G5AX66	G5AX66_HETGA	G5AX66_HETGA Keratin, type I cytoskeletal 10 OS=Heterocephalus glaber G				2	1
>tr G5A:G5AX88	G5AX88_HETGA	G5AX88_HETGA Actin-related protein 2/3 complex subunit 1A OS=Hetero					1
>tr G5A:G5AXV0	G5AXV0_HETGA	G5AXV0_HETGA Catalase OS=Heterocephalus glaber GN=GW7_08865 PE=3		1			
>tr G5A:G5AYX1	G5AYX1_HETGA	G5AYX1_HETGA Caspase recruitment domain-containing protein 10 OS=Het				1	
>tr G5A:G5AZB7	G5AZB7_HETGA	G5AZB7_HETGA Apolipoprotein B-100 OS=Heterocephalus glaber GN=GW7_				1	
>tr G5A:G5AZW5	G5AZW5_HETGA	G5AZW5_HETGA Uncharacterized protein OS=Heterocephalus glaber GN=G		1			
>tr G5B:G5B009	G5B009_HETGA	G5B009_HETGA Early endosome antigen 1 (Fragment) OS=Heterocephalus g		1			1
>tr G5B:G5B0K5	G5B0K5_HETGA	G5B0K5_HETGA Ras-related protein Rab-5C OS=Heterocephalus glaber GN=				1	
>tr G5B:G5B0M0	G5B0M0_HETGA	G5B0M0_HETGA Junction plakoglobin OS=Heterocephalus glaber GN=GW7_		1			1
>tr G5B:G5B0M5	G5B0M5_HETGA	G5B0M5_HETGA Keratin, type I cytoskeletal 16 OS=Heterocephalus glaber C					2
>tr G5B:G5B0M6	G5B0M6_HETGA	G5B0M6_HETGA Keratin, type I cytoskeletal 14 OS=Heterocephalus glaber C				2	
>tr G5B:G5B0V3	G5B0V3_HETGA	G5B0V3_HETGA Coiled-coil domain-containing protein 37 (Fragment) OS=H				1	
>tr G5B:G5B125	G5B125_HETGA	G5B125_HETGA GRINL1A complex locus protein 1 (Fragment) OS=Hetero		1			
>tr G5B:G5B161	G5B161_HETGA	G5B161_HETGA UDP-glucose:glycoprotein glycosyltransferase 2 (Fragment)					1
>tr G5B:G5B1D1	G5B1D1_HETGA	G5B1D1_HETGA Sterile alpha motif domain-containing protein 9 OS=Hetero					1
>tr G5B:G5B1I0	G5B1I0_HETGA	G5B1I0_HETGA Pyrin OS=Heterocephalus glaber GN=GW7_03641 PE=4 SV=				1	1
>tr G5B:G5B280	G5B280_HETGA	G5B280_HETGA Protein-glutamine gamma-glutamyltransferase K OS=Heter		1			
>tr G5B:G5B2T4	G5B2T4_HETGA	G5B2T4_HETGA Ubiquitin-associated and SH3 domain-containing protein A		1			
>tr G5B:G5B3L2	G5B3L2_HETGA	G5B3L2_HETGA Tetratricopeptide repeat protein 6 OS=Heterocephalus glab				1	

>tr M0F M0R813	M0R813_RAT	M0R813_RAT Uncharacterized protein (Fragment) OS=Rattus norvegicus PE=	1	1					
>tr M0F M0R936	M0R936_RAT	M0R936_RAT Uncharacterized protein OS=Rattus norvegicus PE=4 SV=1							1
>tr M0F M0R979	M0R979_RAT	M0R979_RAT Protein Thbs1 (Fragment) OS=Rattus norvegicus GN=Thbs1 PE		2	2				1
>tr M0F M0R958	M0R958_RAT	M0R958_RAT Uncharacterized protein (Fragment) OS=Rattus norvegicus PE=	1	1	1				
>tr M0F M0R927	M0R927_RAT	M0R927_RAT Uncharacterized protein OS=Rattus norvegicus PE=4 SV=1					1	1	1
>tr M0F M0RAB8	M0RAB8_RAT	M0RAB8_RAT Uncharacterized protein (Fragment) OS=Rattus norvegicus PE	1	1	1	1	1	1	1
>tr M0F M0RAV0	M0RAV0_RAT	M0RAV0_RAT Uncharacterized protein (Fragment) OS=Rattus norvegicus PE			2	1			
>tr M0F M0RBP7	M0RBP7_RAT	M0RBP7_RAT Uncharacterized protein OS=Rattus norvegicus PE=4 SV=1							1
>tr M0F M0R8X3	M0R8X3_RAT	M0R8X3_RAT Uncharacterized protein OS=Rattus norvegicus PE=4 SV=1			2	1			1
>tr M0F M0RC23	M0RC23_RAT	M0RC23_RAT Uncharacterized protein (Fragment) OS=Rattus norvegicus PE=	1	2	3	3			1
>tr M0F M0RC65	M0RC65_RAT	M0RC65_RAT Cofilin 2, muscle (Predicted), isoform CRA_b OS=Rattus norve		3	1	2			2
>tr M0F M0RCB7	M0RCB7_RAT	M0RCB7_RAT Protein Apo2 OS=Rattus norvegicus GN=Apo2 PE=4 SV=1			2				2
>tr M0F M0RCV2	M0RCV2_RAT	M0RCV2_RAT Protein LOC100363436 OS=Rattus norvegicus GN=LOC100363				1			
>tr M0F M0RD44	M0RD44_RAT	M0RD44_RAT Protein Zfp318 (Fragment) OS=Rattus norvegicus GN=Zfp318				1			
>tr M0F M0RDF2	M0RDF2_RAT	M0RDF2_RAT Uncharacterized protein (Fragment) OS=Rattus norvegicus PE				2			1
>tr M0F M0RDL2	M0RDL2_RAT	M0RDL2_RAT Uncharacterized protein OS=Rattus norvegicus PE=4 SV=1							1
>tr M0F M0RDW9	M0RDW9_RAT	M0RDW9_RAT Uncharacterized protein (Fragment) OS=Rattus norvegicus PI	1	1	3	3			
>tr M0F M0RE02	M0RE02_RAT	M0RE02_RAT Uncharacterized protein OS=Rattus norvegicus PE=4 SV=1	1	1	2	4			1
>tr O35 O35849	O35849_RAT	O35849_RAT Lecithin cholesterol acyltransferase OS=Rattus norvegicus GN=			1	1			1
>tr Q32 Q32PX6	Q32PX6_RAT	Q32PX6_RAT Protein Rhog OS=Rattus norvegicus GN=Rhog PE=2 SV=1							
>tr Q3N Q3MHS9	Q3MHS9_RAT	Q3MHS9_RAT Chaperonin containing Tcp1, subunit 6A (Zeta 1) OS=Rattus n				2			
>tr Q3N Q3MID6	Q3MID6_RAT	Q3MID6_RAT Calumenin OS=Rattus norvegicus GN=Calu PE=2 SV=1							1
>tr Q4A Q4AEG0	Q4AEG0_RAT	Q4AEG0_RAT Glycoprotein 9 OS=Rattus norvegicus GN=Gp9 PE=2 SV=1			1	1			1
>tr Q4G Q4G002	Q4G002_RAT	Q4G002_RAT Histocompatibility 2, T region locus 24 OS=Rattus norvegicus C							
>tr Q4V Q4V7B6	Q4V7B6_RAT	Q4V7B6_RAT LOC499276 protein (Fragment) OS=Rattus norvegicus GN=LOC	1	1					
>tr Q4V Q4V7D9	Q4V7D9_RAT	Q4V7D9_RAT Protein Smpd13b OS=Rattus norvegicus GN=Smpd13b PE=2 SV=			4	1	1	2	
>tr Q4V Q4V8H5	Q4V8H5_RAT	Q4V8H5_RAT Aspartyl aminopeptidase OS=Rattus norvegicus GN=Dnpep PE			3	2	3	2	
>tr Q5B Q5BJU0	Q5BJU0_RAT	Q5BJU0_RAT Protein Rras2 OS=Rattus norvegicus GN=Rras2 PE=2 SV=1			2				1
>tr Q5B Q5BKC4	Q5BKC4_RAT	Q5BKC4_RAT C9 protein OS=Rattus norvegicus GN=C9 PE=2 SV=1							1
>tr Q5E Q5EBA7	Q5EBA7_RAT	Q5EBA7_RAT Hepatocyte growth factor activator OS=Rattus norvegicus GN=	1	1					1
>tr Q5F Q5FVQ6	Q5FVQ6_RAT	Q5FVQ6_RAT Interferon-gamma-inducible GTPase ifgga3 protein OS=Rattus							1
>tr Q5I Q5IOE1	Q5IOE1_RAT	Q5IOE1_RAT Leucine-rich alpha-2-glycoprotein 1 OS=Rattus norvegicus GN=	1	2					
>tr Q5I Q5I0L8	Q5I0L8_RAT	Q5I0L8_RAT Angiopoietin-like 3 OS=Rattus norvegicus GN=Angptl3 PE=2 SV=				1			3
>tr Q5I Q5I0M1	Q5I0M1_RAT	Q5I0M1_RAT Apolipoprotein H OS=Rattus norvegicus GN=ApoH PE=2 SV=1	2	2	5	5			3
>tr Q5I Q5I0M3	Q5I0M3_RAT	Q5I0M3_RAT Complement component factor h-like 1 OS=Rattus norvegicus				1	2		
>tr Q5J Q5J3J1	Q5J3J1_RAT	Q5J3J1_RAT Protein Vom1r43 OS=Rattus norvegicus GN=Vom1r43 PE=2 SV=							1
>tr Q5M Q5M7T7	Q5M7T7_RAT	Q5M7T7_RAT Phospholipase A2, group VII (Platelet-activating factor acetyl	1	2	5	5			5
>tr Q5N Q5M849	Q5M849_RAT	Q5M849_RAT Interferon-induced protein 35 OS=Rattus norvegicus GN=ifi35			1	1	2		
>tr Q5M Q5M860	Q5M860_RAT	Q5M860_RAT Protein Arhgdib OS=Rattus norvegicus GN=Arhgdib PE=2 SV=			2				1
>tr Q5M Q5M890	Q5M890_RAT	Q5M890_RAT Apolipoprotein N OS=Rattus norvegicus GN=ApoN PE=2 SV=1	1	2	2				4
>tr Q5R Q5RKH8	Q5RKH8_RAT	Q5RKH8_RAT Peptidylprolyl isomerase (Cyclophilin)-like 2 OS=Rattus norveg	1						
>tr Q5R Q5RKJ9	Q5RKJ9_RAT	Q5RKJ9_RAT RAB10, member RAS oncogene family OS=Rattus norvegicus GI	1	1	1	1	1	1	
>tr Q5U Q5U1Y2	Q5U1Y2_RAT	Q5U1Y2_RAT Protein Rac2 OS=Rattus norvegicus GN=Rac2 PE=2 SV=1			1	1	1	1	
>tr Q5U Q5U2U4	Q5U2U4_RAT	Q5U2U4_RAT Protein Scamp2 OS=Rattus norvegicus GN=Scamp2 PE=2 SV=1			1	1			
>tr Q5U Q5U362	Q5U362_RAT	Q5U362_RAT Annexin OS=Rattus norvegicus GN=Anxa4 PE=2 SV=1			1				
>tr Q5V Q5VLR5	Q5VLR5_RAT	Q5VLR5_RAT BWK4 OS=Rattus norvegicus GN=Erp44 PE=2 SV=1			1				
>tr Q5X Q5XI34	Q5XI34_RAT	Q5XI34_RAT Protein Ppp2r1a OS=Rattus norvegicus GN=Ppp2r1a PE=2 SV=1							1
>tr Q5X Q5XI36	Q5XI36_RAT	Q5XI36_RAT CD97 molecule OS=Rattus norvegicus GN=CD97 PE=2 SV=1				1			1
>tr Q5X Q5XI38	Q5XI38_RAT	Q5XI38_RAT Lymphocyte cytosolic protein 1 OS=Rattus norvegicus GN=Lcp1			3				
>tr Q63 Q63318	Q63318_RAT	Q63318_RAT Protein LOC100911104 OS=Rattus norvegicus GN=LOC100911:			1				
>tr Q6A Q6AY18	Q6AY18_RAT	Q6AY18_RAT Protein Sar1a OS=Rattus norvegicus GN=Sar1a PE=2 SV=1							1
>tr Q6A Q6AYD0	Q6AYD0_RAT	Q6AYD0_RAT Leucine rich repeat containing 17 OS=Rattus norvegicus GN=L				1			
>tr Q6A Q6AYQ9	Q6AYQ9_RAT	Q6AYQ9_RAT Peptidyl-prolyl cis-trans isomerase OS=Rattus norvegicus GN=							1
>tr Q6A Q6AYS3	Q6AYS3_RAT	Q6AYS3_RAT Protective protein for beta-galactosidase OS=Rattus norvegicu	1						
>tr Q6N Q6MG38	Q6MG38_RAT	Q6MG38_RAT Protein RT1-CE3 OS=Rattus norvegicus GN=LOC100365191 PI			1				
>tr Q6N Q6MG73	Q6MG73_RAT	Q6MG73_RAT Complement component 2 OS=Rattus norvegicus GN=C2 PE=				1			
>tr Q6N Q6MGA0	Q6MGA0_RAT	Q6MGA0_RAT MHC class II antigen OS=Rattus norvegicus GN=RT1-Ba PE=2 !			1				
>tr Q6P Q6P9U0	Q6P9U0_RAT	Q6P9U0_RAT Protein Serpinb6 OS=Rattus norvegicus GN=Serpinb6 PE=2 SV=			1				
>tr Q6P Q6P9V6	Q6P9V6_RAT	Q6P9V6_RAT Proteasome subunit alpha type OS=Rattus norvegicus GN=Psr			2	1	1	3	
>tr Q6Q Q6QI81	Q6QI81_RAT	Q6QI81_RAT LRRGT00127 OS=Rattus norvegicus GN=Cnbd2 PE=2 SV=1							1
>tr Q6X Q6XDA0	Q6XDA0_RAT	Q6XDA0_RAT Erythroid spectrin beta OS=Rattus norvegicus GN=Sptb PE=2 S			2		1		
>tr Q76 Q76KC6	Q76KC6_RAT	Q76KC6_RAT Protein Pde8a OS=Rattus norvegicus GN=Pde8a PE=2 SV=1							1
>tr Q80 Q80ZA3	Q80ZA3_RAT	Q80ZA3_RAT Alpha-2 antiplasmin OS=Rattus norvegicus GN=Serpinf1 PE=2 !							1
>tr Q8R Q8R3Z7	Q8R3Z7_RAT	Q8R3Z7_RAT EH-domain containing 4 OS=Rattus norvegicus GN=Ehd4 PE=2			3				4
>tr Q92 Q920L0	Q920L0_RAT	Q920L0_RAT Lymphocyte cytosolic protein 2 OS=Rattus norvegicus GN=Lcp2							1
>tr Q99 Q99JC6	Q99JC6_RAT	Q99JC6_RAT Protein Tapbp OS=Rattus norvegicus GN=Tapbp PE=2 SV=1			1				
>tr Q99 Q99MA2	Q99MA2_RAT	Q99MA2_RAT Membrane-bound aminopeptidase P OS=Rattus norvegicus G	1	2	2	2	2	2	
>tr Q99 Q99ME0	Q99ME0_RAT	Q99ME0_RAT CXC chemokine RTCK1 OS=Rattus norvegicus GN=Pbbp PE=4 !				1			
>tr Q9E Q9ERL1	Q9ERL1_RAT	Q9ERL1_RAT Cytochrome b-245, beta polypeptide, isoform CRA_a OS=Rattu			2			1	
>tr Q9J Q9JKB7	Q9JKB7_RAT	Q9JKB7_RAT Guanine deaminase OS=Rattus norvegicus GN=Gda PE=2 SV=1	1	1	1	1	1	1	
>tr Q9Q Q9QX71	Q9QX71_RAT	Q9QX71_RAT Napsin OS=Rattus norvegicus GN=Napsa PE=2 SV=1				3	4	2	
>tr Q9W Q9WVJ6	Q9WVJ6_RAT	Q9WVJ6_RAT Protein Tgm2 OS=Rattus norvegicus GN=Tgm2 PE=2 SV=1			1				
>tr Q9Z Q9Z0M0	Q9Z0M0_RAT	Q9Z0M0_RAT Cd55 molecule OS=Rattus norvegicus GN=Cd55 PE=2 SV=1							1