

# La publicación en abierto de los datos de investigación en revistas científicas

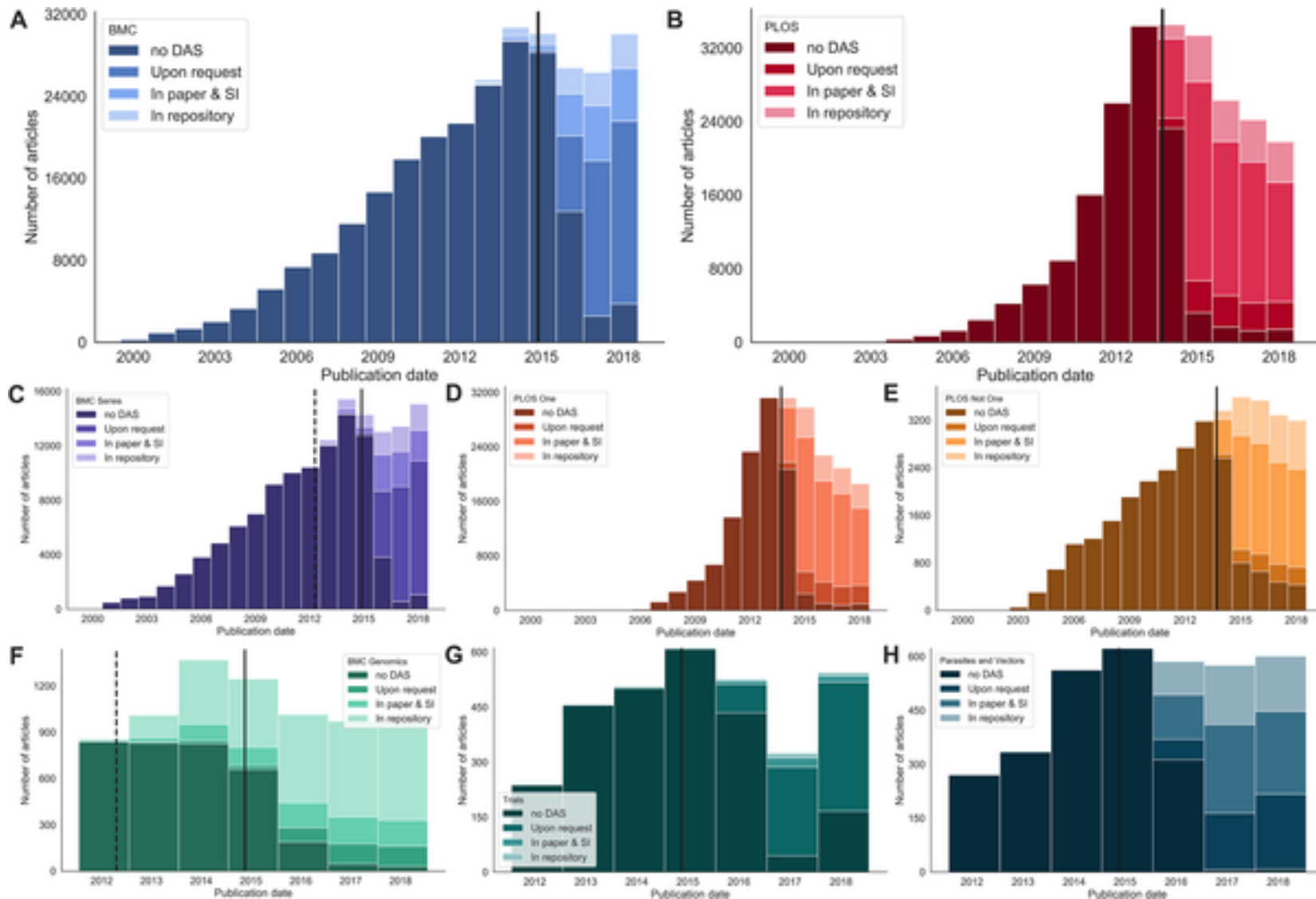
Formación para editores-ISCIII  
29 de noviembre de 2023

**Remedios Melero. IATA-CSIC, Valencia, España**  
**rmelero@iata.csic.es**

Los datos y las publicaciones

Recomendaciones y directrices

# Efecto de la implementación de una política editorial sobre los datos de investigación subyacentes a las publicaciones. Caso de revistas de BMC y PLoS



Colavizza G, Hrynaszkiewicz I, Staden I, Whitaker K, McGillivray B (2020) The citation advantage of linking publications to research data. PLOS ONE 15(4): e0230416. <https://doi.org/10.1371/journal.pone.0230416>  
<https://journals.plos.org/plosone/article?id=10.1371/journal.pone.0230416>

# Announcing the journal of the medical library association's data sharing policy

Akers K, Read K, Amos L et al. [See more](#)

*Journal of the Medical Library Association*

DOI: [10.5195/jmla.2019.801](https://doi.org/10.5195/jmla.2019.801)

- Starting October 1, 2019, authors of Original Investigation and Case Report manuscripts are required to deposit the de-identified data associated with their manuscripts in a repository and include a “Data Availability Statement” in their manuscripts describing where and how the data can be accessed. ...
- The *JMLA* defines “data” as the digital materials underlying the results described in the manuscript, including spreadsheets, text files, interview recordings or transcripts, images, videos, output from statistical software, or computer code or scripts.
- Shared data should be appropriately de-identified to prevent revealing the identity of study participants. MLA, the *JMLA*, and individual members of the *JMLA* editorial team are not liable for any harm or damage resulting from the insufficient de-identification of data associate with *JMLA* articles
- When possible, authors are encouraged to apply a license that is at least as permissive as a Creative Commons Attribution (CC BY) license to the data

## Data deposition required for all C19 Rapid Review publishers

London 20 Jan 2021

Data deposition required for all C19 Rapid Review publishers

The [C19 Rapid Review Initiative](#) – a large-scale collaboration of organisations across the scholarly publishing industry – has agreed to mandate data deposition across the original group of journals that set up the collaboration (eLife, F1000 Research, Hindawi, PeerJ, PLOS, Royal Society, FAIRsharing, Outbreak Science Rapid PRereview, GigaScience, Life Science Alliance, Ubiquity Press, UCL, MIT Press, Cambridge University Press, BMC, RoRi and AfricArXiv). New members aim to align in due course.

COVID Rapid Review Initiative members **must have data shared in a public repository rather than just available on request**. The new common policy is to meet the [TOP Data Transparency Level II](#) that requires that “Data must be posted to a trusted repository. Exceptions must be identified at article submission”. This means mandating data sharing in a public repository rather than just ensuring the authors publish a Data Availability Statement (DAS). Any DAS must now explicitly list the repositories where the data are publicly available (subject to ethical considerations).

Depurar los datos	<a href="https://openrefine.org/">https://openrefine.org/</a>
Documentar los datos	Readme.txt
Anonimizar (si corresponde)	<a href="https://amnesia.openaire.eu/">https://amnesia.openaire.eu/</a>
Licenciar	Licencias Creative Commons, p.e.
Enriquecer	Vocabularios/tesaurus estandarizados



**Elige repositorio**



**Deposita + Añade metadatos**



**Distribuye en abierto**



**Cita los datos**

# Opciones para compartir los datos de una publicación (revista). Qué, cuando, dónde

- Adjuntar los datasets como material complementario para su evaluación
- La revista crea un repositorio propio de datos para su depósito al envío del trabajo
- La revista crea un repositorio propio de datos para su depósito después de la aceptación del trabajo
- La revista integra en su workflow el depósito de datasets (p.e., con el plugin dataverse del OJS)
- **La revista recomienda el depósito en algún repositorio externo**



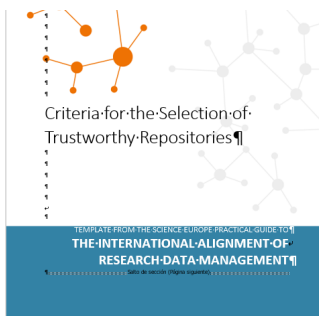
## Criteria for the Selection of Trustworthy Repositories

### Criterios para la selección de repositorios de datos “fiables”

#### Ofrecen identificadores persistentes y únicos (PID)

- Permitir descubrir e identificar los datos
- Permitir la búsqueda, citación y recuperación de datos
- Proporcionar soporte para el versionado de datosMetadatos
- Permitir encontrar los datos
- Permitir la referencia a información relevante relacionada, como otros datos y publicaciones
- Proporcionar información que esté disponible y se mantenga públicamente, incluso para los datos no publicados, protegidos, retractados o eliminados.
- Utilizar normas de metadatos ampliamente aceptadas (por la comunidad científica)
- Garantizar que los metadatos sean recuperables por las máquinas.





## Licencias de acceso y uso de datos

- Permitir el acceso a los datos en condiciones bien especificadas
- Garantizar la autenticidad e integridad de los datos
- Permitir la recuperación de los datos
- Proporcionar información sobre licencias y permisos (idealmente en formato legible por máquina)
- Garantizar la confidencialidad y respetar los derechos de los sujetos y creadores de los datos

## Preservación

- Garantizar la persistencia de los metadatos y los datos
- Ser transparente en cuanto a la misión, el alcance, las políticas de preservación y los planes (incluyendo la gobernanza, la sostenibilidad financiera, el período de conservación y el plan de continuidad).

# Dónde localizar y depositar datasets

Metrics 27,132 Downloads [Contact](#) [Share](#)

Repositorio de Datos del Consorcio Madroño | ([www.consorciomadrono.es](http://www.consorciomadrono.es))

Navigation bar with logos for data repositories: UAH, UAM, UC3M, UNED, UPM, URJC.

Search this dataverse... [Find](#) [Advanced Search](#)

Search results: 1 to 10 of 13 Results. [Sort](#)

- [Dataverses \(13\)](#)
- [Datasets \(531\)](#)
- [Files \(3,100\)](#)

Result 1: [Catálogos de Barrios Vulnerables de España 1991, 2001 y 2011](#) (vps181.cesvima.upm.es/re-hab/bbvv) Jan 14, 2021 [Repositorio de Datos UPM](#)

 Aviso: Ha cerrado la sesión satisfactoriamente.

## Bienvenido a PGDonline

PGDonline ha sido desarrollado por el **Consorcio Madroño** como una herramienta para elaborar planes de gestión de datos.

### Comenzando:

- [Consorcio Madroño](#)
- [INVESTIGAM - Portal de Ciencia Abierta del Consorcio Madroño](#)
- [INVESTIGAM: PAGODA](#)
- [INVESTIGAM — PAGODA: CREAR SU PGD](#)
- [DCC Checklist for a Data Management Plan](#)

[Iniciar sesión](#) [Registrarse](#)

\* **Correo electrónico**

\* **Clave**

[¿Olvidó su clave?](#)

Recordar correo

[Iniciar sesión](#)

**CORA** Repositori de Dades de Recerca

Home About Search User Guide Contact English Sign Up Log In

Search this dataverse... Q Advanced Search

26 UNIVERSITIES & CERCA CENTERS  
 117 DATASETS  
 1,454 FILES  
 8,347 DOWNLOADS



- Dataverses (46)**
- Datasets (117)**
- Files (1,454)**
- Dataverse Category**
- CERCA Centers (17)
- Universities (11)
- Research Group (9)
- Research Project (4)

1 to 10 of 163 Results

Sort



Data of Fecal Immunochemical Test-Based Colorectal Cancer Screening Program According to Ambient Temperature and Humidity  
 Mar 17, 2022 - Universitat de Barcelona

Ibáñez Sanz, Gemma; Milà, Núria; Vives, Núria; Vidal Lancis, Carmen; Binefa i Rodríguez, Gemma; Rocamora, Judith; Atencia, Carmen; Moreno Aguado, Víctor; Sanz Pamplona, Rebeca; García Martínez, Montserrat, 2022, "Data of Fecal Immunochemical Test-Based Colorectal Cancer Screening Program According to Ambient Temperature and Humidity", <https://doi.org/10.34810/data168>, Repositori de Dades de Recerca, V1, UNF:6:peH5fhEDC6jc9Nbk3xoFmg== [fileUNF]

Data from a retrospective cohort that included individuals aged 50–69 years who participated in colorectal cancer (CRC)

## Welcome

This tool helps you to create, review, and share data management plans that meet institutional and funder requirements. Join the growing number of researchers that have adopted **eiNa DMP**:



509 Users



306 Plans



15 Organisations



10 simple rules for creating a good data management plan



## LISTAR

### Todo Repisalud

► Comunidades y Colecciones

► Por fecha de publicación

► Autores

► Títulos

► Tipo de documento

► Institución

► Palabras clave

► MeSH

► Agencias financiadoras

### Esta comunidad

► Por fecha de publicación

► Autores

► Títulos

► Tipo de documento

► Institución

[Inicio](#) | [Sobre Repisalud](#) | [Info autores](#) | [FAQs](#) | [Login](#) | [Contacto/Sugerencias](#)

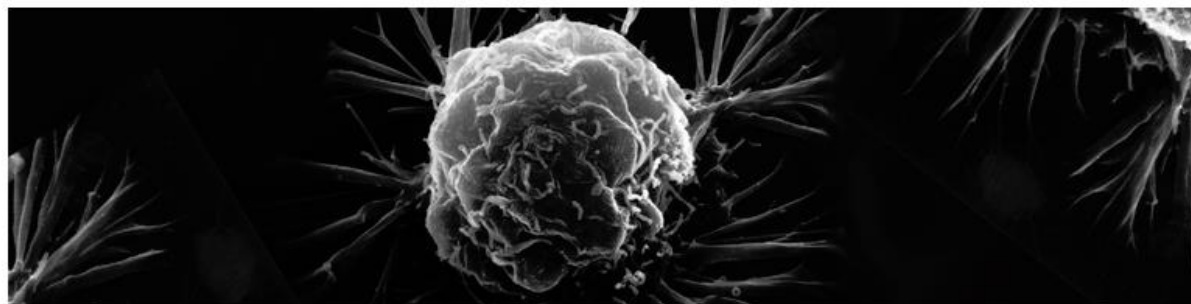
[español](#)

🔍 [Buscar](#)

🔗 [Búsqueda avanzada](#)

[Repisalud Principal](#) / [Investigación](#)

## Investigación



Artículos, contribuciones a congresos, datos de investigación, libros, capítulos de libro, patentes, tesis y trabajos de investigación.

### Subcomunidades en esta comunidad

[ISCIII](#) [3452]

Instituto de Salud Carlos III

[CNIC](#) [1335]

Centro Nacional de Investigaciones Cardiovasculares

[CNIO](#) [453]

Centro Nacional de Investigaciones Oncológicas

[IIS](#) [476]

Institutos de Investigación Sanitaria



Comunidad de Madrid | CONSEJERÍA DE SANIDAD

## REPOSITORIO INSTITUCIONAL

DE LA CONSEJERÍA DE SANIDAD DE LA COMUNIDAD DE MADRID

[Inicio](#) | [Sobre el Repositorio](#) | [Ayuda](#) | [Acceso](#) | [Contacto](#)

[ES](#) [EN](#)

Buscar...

[Búsqueda avanzada >>](#)

### Navegar

- ▶ Comunidades/ Colecciones
- ▶ Fecha Publicación
- ▶ Autor
- ▶ Título
- ▶ Palabra clave

### Tipos de documentos

- Artículos
- Congresos
- Datos de Investigación
- Divulgación
- Formación y Docencia
- Informes técnicos
- Libros
- Multimedia

## Hospital Universitario Puerta de Hierro Majadahonda : [103]

### Envíos recientes

- » Plasma IP-10 and IL-6 are linked to Child-Pugh B cirrhosis in patients with advanced HCV-related cirrhosis: a cross-sectional study
- » Risk Factors and Mortality of COVID-19 in Patients With Lymphoma: A Multicenter Study
- » Title: Chess as a cognitive enhancement tool in the healthy and in mental health disorders: A systematic review.

Buscar

[Fecha Publicación](#)

[Autor](#)

[Título](#)

[Palabra clave](#)

[Tipos de documento](#)

### Colecciones en esta comunidad

[Artículos \[103\]](#)

[Comunicaciones a congresos \[0\]](#)

[Datos de Investigación \[0\]](#)

# Repositorio “generalista”

<https://zenodo.org/>

zenodo Search Upload Communities rmelero@lata.csic.es

Delete Save Publish

## New upload

Instructions: (i) Upload minimum one file or fill-in required fields (marked with a red star). (ii) Press "Save" to save your upload for editing later. (iii) When ready, press "Publish" to finalize and make your upload public.

Files Choose files Start upload

Drag and drop files here

— or —

Choose files

(minimum 1 file required, max 50 GB per dataset - [contact us](#) for larger datasets)  
If you're experiencing issues with uploading larger files, read our [FAQ section](#) on file upload issues.

Communities recommended

Specify communities which you wish your upload to appear in. The owner of the community will be notified, and can either accept or reject your request. Please make sure your record complies with the content policy of the communities you add; reported abuse will be followed by account inactivation.

Start typing a community name...

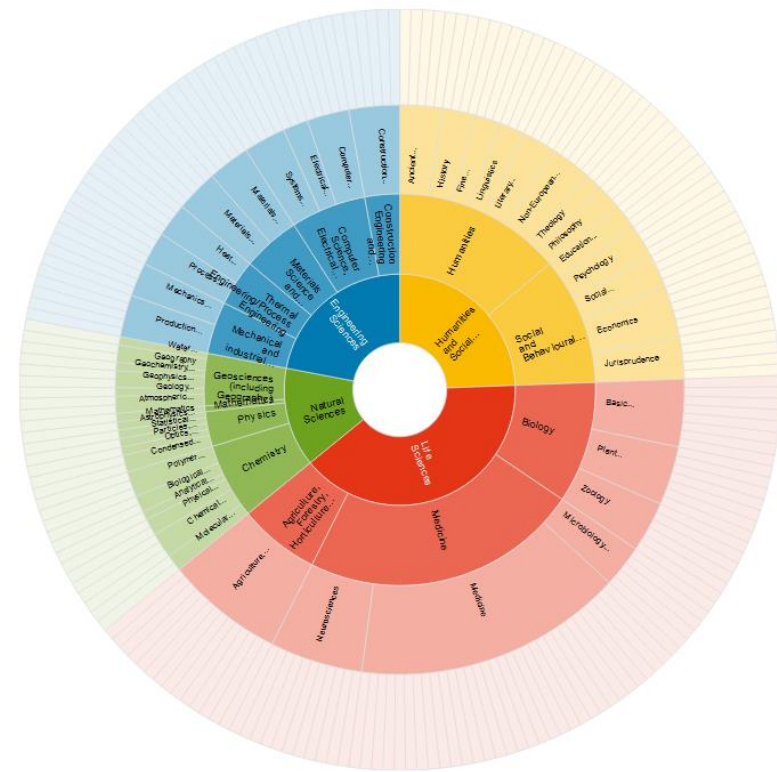
Upload type required

Publication Poster Presentation Dataset Image Video/Audio Software Lesson Physical object Other

Publication type: Journal article

Publication type.

<http://www.re3data.org/>



**German Research Foundation to fund new services of re3data**

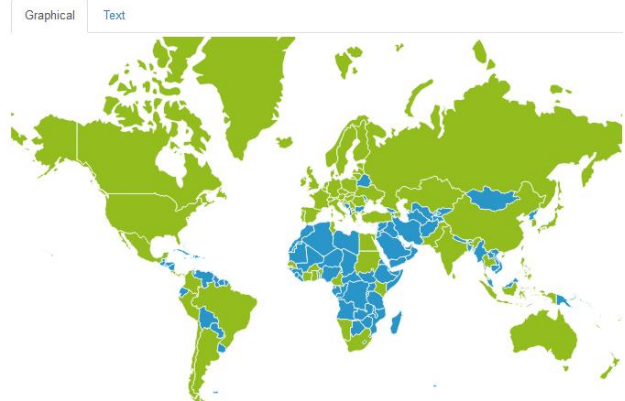
Since its launch in 2012, re3data has become the resource of information about research data repositories. It indexes and provides extensive information about more

**Data sharing made easier: use Repository Finder to find the right repository for your data**

More and more funders and publishers require research data to be made available in appropriate repositories, but

**2,000 Data Repository and Science Europe Framework for Discipline-specific Research Data Management**

**Browse by country**





**Filter**  
Reset all

**Subjects**

- Humanities and Social Sciences (1)
- Life Sciences (8)
  - Biology (5)
    - Basic Biological and Medical Research (2)
    - Bioinformatics and Theoretical Biology (1)
  - Plant Sciences (5)
    - Plant Systematics and Evolution (1)
    - Plant Biochemistry and Biophysics (1)
    - Plant Genetics (2)
- Medicine (1)
  - Nutritional Sciences (1)
- Agriculture, Forestry, Horticulture and Veterinary Medicine (8)
  - Agriculture, Forestry, Horticulture and Veterinary Medicine (8)
  - Soil Sciences (3)
    - Plant Cultivation (8)
    - Plant Nutrition (3)
    - Ecology of Agricultural Landscapes (2)
    - Plant Breeding (5)
    - Agricultural and Food Process Engineering (1)
    - Agricultural Economics and Sociology (3)
    - Inventory Control and Use of Forest Resources (1)
    - Basic Forest Research (1)
- Natural Sciences (1)
  - Chemistry (1)
    - Biological Chemistry and Food Chemistry (1)
    - Biological and Biomimetic Chemistry (1)
- Engineering Sciences (1)
  - Computer Science, Electrical and System Engineering (1)
  - Computer Science (1)
    - Operating, Communication and Information Systems (1)

**Content Types**

**Countries**

**AID systems**

**API**

**Data access**

**Data access restrictions**

Search...

← Previous 1 Next →

Toggle short help

Sort by -

**Found 8 result(s)**

**International Institute of Tropical Agriculture datasets**  
International Institute of Tropical Agriculture CKAN repository

**Subject(s)**  
Agriculture, Forestry, Horticulture and Veterinary Medicine | Life Sciences | Plant Breeding | Plant Cultivation | Plant Nutrition | Plant Genetics | Humanities and Social Sciences  
Agriculture, Forestry, Horticulture and Veterinary Medicine | Plant Sciences | Biology

**Content type(s)**  
Standard office documents | Databases | Scientific and statistical data formats | Structured text | other

**Country**  
International

ITA conducts research on the following thematic areas: Biotechnology and genetic improvement, Natural resource management, Social science and agribusiness, and Plant production and plant health.

**CSISA Data Repository**  
Cereal Systems Initiative for South Asia (CSISA) Research Data

**Subject(s)**  
Agriculture, Forestry, Horticulture and Veterinary Medicine | Life Sciences | Plant Nutrition | Agricultural Economics and Sociology | Plant Breeding | Plant Cultivation  
Agriculture, Forestry, Horticulture and Veterinary Medicine

**Content type(s)**  
Standard office documents | Scientific and statistical data formats | Software applications | Source code

**Country**  
International | United States | India

In keeping with the open data policies of the U.S. Agency for International Development (USAID) and Bill & Melinda Gates Foundation, the Cereal Systems Initiative for South Asia (CSISA) has launched the CSISA Data Repository to ensure public accessibility to key data sets, including crop cut data- directly observed, crop yield estimates, on-station and on-farm research trial data and socioeconomic surveys. CSISA is a science-driven and impact-oriented regional initiative for increasing the productivity of cereal-based cropping systems in Bangladesh, India and Nepal, thus improving food security and farmers' livelihoods. CSISA generates data that is of value and interest to a diverse audience of researchers, policymakers and the public. CSISA's data repository is hosted on Dataverse, an open source web application developed at Harvard University to share, preserve, cite, explore and analyze research data. CSISA's repository contains rich datasets, including on-station trial data from 2009-17 about crop and resource management practices for sustainable future cereal-based cropping systems. Collection of this data occurred during the long-term, on-station research trials conducted at the Indian Council of Agricultural Research - Research Complex for the Eastern Region in Bihar, India. The data include information on agronomic management for the sustainable intensification of cropping systems, mechanization, diversification, futuristic approaches to sustainable intensification, long-term effects of conservation agriculture practices on soil health and the pest spectrum. Additional trial data in

Ejemplos del DAS (Data availability statement) ....

## Data Availability <https://reviewer.elifesciences.org/author-guide/journal-policies>

To maintain high standards of research reproducibility, and to promote the reuse of new findings, **eLife requires all datasets associated with an article to be made freely and widely available** (unless there are strong reasons to restrict access, for example in the case of human subjects data), in the most useful formats, and according to the relevant reporting standards.

Wherever possible, **authors should make major datasets available using domain-specific public archives** (for example, [GenBank](#), [Protein Data Bank](#), and [ClinicalTrials.gov](#)), or generic databases (for example, [Dryad](#), [Dataverse](#) or [the Open Science Framework](#)) where a domain specific archive does not exist.

Authors using original data must:

- **make the data available at a trusted digital repository** (however, if all data required to reproduce the reported analyses appears in the article text, tables, and figures then it does not also need to be posted to a repository);
- **include all variables, treatment conditions, and observations described in the manuscript;**
- provide a full account of the procedures used to collect, pre-process, clean, or generate the data;
- provide research materials and description of procedures necessary to conduct an independent replication of the research.

Trusted repositories adhere to policies that make data discoverable, accessible, usable, and preserved for the long term. Trusted repositories also assign unique and persistent identifiers. Author-maintained websites are not compliant with this requirement.

[Introduction](#)[Minimal Data Set Definition](#)[Acceptable Data Sharing Methods](#)[Acceptable Data Access Restrictions](#)[Unacceptable Data Access Restrictions](#)[FAQs](#)[PLOS Data Advisory Board](#)

## Data Availability

The following policy applies to all PLOS journals, unless otherwise noted.

### Introduction

**PLOS journals require authors to make all data necessary to replicate their study's findings publicly available without restriction at the time of publication. When specific legal or ethical restrictions prohibit public sharing of a data set, authors must indicate how others may obtain access to the data.**

When submitting a manuscript, authors must provide a Data Availability Statement describing compliance with PLOS' data policy. If the article is accepted for publication, the Data Availability Statement will be published as part of the article.

Acceptable data sharing methods are listed below, accompanied by guidance for authors as to what must be included in their Data Availability Statement and how to follow [best practices in research reporting](#).

PLOS believes that sharing data fosters scientific progress. Data availability allows and facilitates:

- › Validation, replication, reanalysis, new analysis, reinterpretation or inclusion into meta-analyses;
- › Reproducibility of research;
- › Efforts to ensure data are archived, increasing the value of the investment made in funding scientific research;
- › Reduction of the burden on authors in preserving and finding old data, and managing data access requests;
- › Citation and linking of research data and their associated articles, enhancing visibility and ensuring recognition for authors, data producers and curators.

Publication is conditional on compliance with this policy. If restrictions on access to data come to light after publication, we reserve the right to post a Correction, an Editorial Expression of Concern, contact the authors' institutions and funders, or, in extreme cases, retract the publication.

*Neuropsychology* (<https://www.apa.org/pubs/journals/neu/index?tab=4>)

### **Data, Materials, and Code**

Authors must state whether data and study materials are available and, if so, where to access them. Recommended repositories include [APA's repository](#) on the Open Science Framework (OSF), or authors can access a full [list of other recommended repositories](#).

In both the Author Note and at the end of the Method section, specify whether and where the data and material will be available or note the legal or ethical reasons for not doing so. For submissions with quantitative or simulation analytic methods, state whether the study analysis code is available, and, if so, where to access it (or the legal or ethical reason why it is not available).

*Journal of Animal ecology* <https://besjournals.onlinelibrary.wiley.com/hub/journal/13652656/author-guidelines>

### **Data Availability Statement**

To enable readers to locate archived data from papers, we require that authors list the database and the respective accession numbers or DOIs for all data from the manuscript that has been made publicly available. For example, “Data available from the Dryad Digital Repository <http://dx.doi.org/10.5061/dryad.41qh7> (Kiere & Drummond 2016).” When a DOI is available for the data, the full data citation should also be given in the reference list.

## **Statement examples by research area. Life sciences and clinical medicine.**

<https://www.springernature.com/gp/authors/research-data-policy/data-availability-statements>

### **Data publicly available in a repository:**

- PRO-Seq data were deposited into the Gene Expression Omnibus database under accession number GSE85337 and are available at the following URL:

<https://www.ncbi.nlm.nih.gov/geo/query/acc.cgi?acc=GSE85337>.

- The experimental data and the simulation results that support the findings of this study are available in Figshare with the identifier <https://doi.org/10.6084/m9.figshare.13322975>. The anonymised data collected are available as open data via the University of Bristol online data repository:

<https://doi.org/10.5523/bris.1dnhjcw6w4m1n29u2yuxjywde1>.

### **Data available with the paper or supplementary information:**

- All data supporting the findings of this study are available within the paper and its Supplementary Information. Microsatellite primer sequences are provided in Supplementary Table 2, along with original reference describing the microsatellites used in this study. All data on the measured ecosystem variables indicating ecosystem functions that support the findings of this study are included within this paper and its Supplementary Information files.

### **•Data cannot be shared openly but are available on request from authors:**

- The data that support the findings of this study are not openly available due to reasons of sensitivity and are available from the corresponding author upon reasonable request. Data are located in controlled access data storage at Karolinska Institutet

- The data that support the findings of this study are available from the authors but restrictions apply to the availability of these data, which were used under license from the Natural History Museum (London) for the current study, and so are not publicly available. Data are, however, available from the authors upon reasonable request and with permission from the Centre for Human Evolution Studies at the Natural History Museum.

# **Cómo citar ficheros de datos**

## Por qué y cómo citar los datos (para autores)

### ¿Por qué?

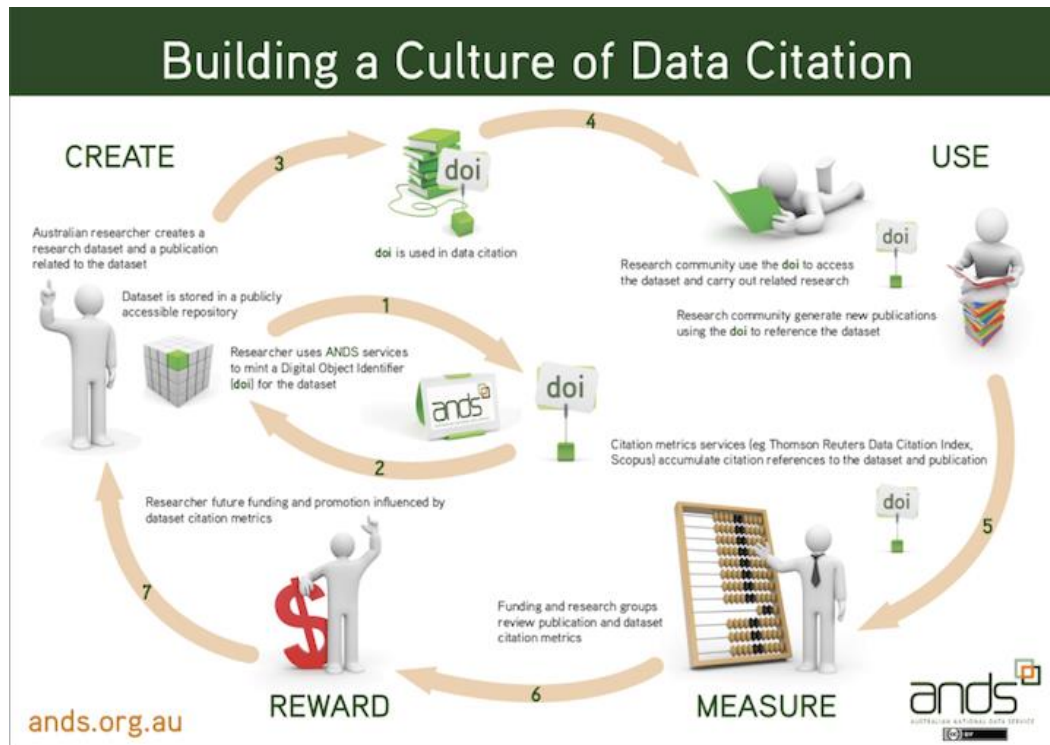
1. Facilita la reproducibilidad y la validación de los resultados, permite la reutilización de los datos.
2. Proporciona crédito a los generadores de datos.
3. Las publicaciones vinculadas a datos disponibles públicamente se han asociado a un aumento de las citas.
4. Mejora la conectividad y el seguimiento de la procedencia de los datos descritos en las publicaciones.
5. Las agencias de financiación (ej Comisión Europea), los editores (Plos) y las instituciones (p.e. CSIC) exigen cada vez más que se compartan los datos.

### ¿Cómo?

1. En el caso de los datos primarios: determine un repositorio apropiado a largo plazo para archivar los datos. Su editor debe proporcionar acceso a una lista de repositorios de archivo aceptables.
2. Deposite sus datos y obtenga del repositorio un número de acceso o un DOI del conjunto de datos.
3. Para los datos secundarios: cite lo que utiliza. Cuando utilice los datos de otros, cite tanto la literatura revisada por pares como los conjuntos de datos utilizados
4. Incluya citas de datos "formales" siempre que sea posible: Cuando los conjuntos de datos tienen identificadores formales y estables o números de acceso, deben incluirse en la lista de referencias principal.
5. Sea lo más completo posible, pero no se invente los metadatos: Si un registro de datos no tiene un autor/creador o un título claros, no se invente uno.
6. Consulte la Guía para autores de su editor para dar formato a la referencia de su conjunto de datos.

Cousijn, H., Kenall, A., Ganley, E. *et al.* A data citation roadmap for scientific publishers. *Sci Data* **5**, 180259 (2018). <https://doi.org/10.1038/sdata.2018.259>





También si no tienes DOI

A standard citation includes the following elements:

**Autores (año): Título. Lugar de publicación. DOI (if used)**

**Ejemplo**

Hanigan, Ivan (2012): Monthly drought data for Australia 1890-2008 using the Hutchinson Drought Index. The Australian National University Australian Data Archive.

<http://doi.org/10.4225/13/50BBFD7E6727A>

# Ejemplo de formato de cita al usar el DOI Citation formatter

<http://citation.crosscite.org/>

## DOI Citation Formatter

Paste your DOI:

10.5061/dryad.7dj7t

For example 10.1145/2783446.2783605

Select Formatting Style:

apa

Begin typing (e.g. Chicago or IEEE.) or use the drop down menu.

Select Language and Country:

en-US

Begin typing (e.g. en-GB for English, Great Britain) or use the drop down menu.

Format

Wang, M., Gu, D., Du, M., Xu, Z., Zhang, S., Zhu, L., ... Chen, J. (2016). Data from: Common genetic variation in ETV6 is associated with colorectal cancer susceptibility [Data set]. Dryad Digital Repository. <https://doi.org/10.5061/dryad.7dj7t>

Copy to clipboard

Do you want to integrate this service? Check the [Documentation](#)

### DOI Registration Agencies



<https://data.research.cornell.edu/content/data-citation>

# ¿Cómo buscar si un artículo tiene material suplementario?

En PMC existen filtros para localizar artículos con diversos tipos de datos asociados:

«**has suppdata[filter]**» para buscar artículos con material complementario asociado.

«**has data avail[filter]**» para buscar artículos que incluyen una disponibilidad de datos o una declaración de accesibilidad de datos.

«**has data citations[filter]**» para buscar artículos que incluyan citas de datos.

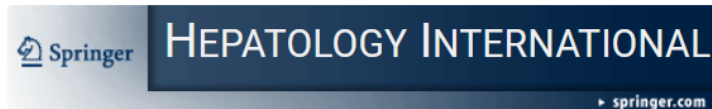
«**has associated data[filter]**» para encontrar todos los artículos con cualquier tipo de sección de datos descrita anteriormente.

<https://bibliogetafe.com/2018/12/21/como-buscar-si-un-articulo-tiene-material-suplementario/>

# has suppdata[filter]»

As a library, NLM provides access to scientific literature. Inclusion in an NLM database does not imply endorsement of, or agreement with, the contents by NLM or the National Institutes of Health.

Learn more: [PMC Disclaimer](#) | [PMC Copyright Notice](#)



[Hepatol Int.](#) 2021 Oct; 15(5): 1068–1082.

Published online 2021 Aug 3. doi: [10.1007/s12072-021-10232-4](https://doi.org/10.1007/s12072-021-10232-4)

PMCID: PMC8514357

PMID: [34345993](#)

## The global trends and regional differences in incidence and mortality of hepatitis A from 1990 to 2019 and implications for its prevention

[Guiying Cao](#)<sup>✉</sup>, [Wenzhan Jing](#)<sup>#</sup>, [Jue Liu](#), and [Min Liu](#)<sup>✉</sup>

▶ [Author information](#) ▶ [Article notes](#) ▶ [Copyright and License information](#) ▶ [PMC Disclaimer](#)

### Associated Data

- ▶ [Supplementary Materials](#)
- ▶ [Data Availability Statement](#)

#### ACTIONS

“ Cite

📖 Collections

#### SHARE



#### RESOURCES

- [Similar articles](#) +
- [Cited by other articles](#) +
- [Links to NCBI Databases](#) +

has data avail[filter]

SCIENTIFIC  
REPORTS  
nature research

 Collections

SHARE



RESOURCES

[Similar articles](#)

[Cited by other articles](#)

[Links to NCBI Databases](#)

[Sci Rep.](#) 2023; 13: 17432.

PMCID: PMC10575857

Published online 2023 Oct 13. doi: [10.1038/s41598-023-44643-0](https://doi.org/10.1038/s41598-023-44643-0)

PMID: [37833325](https://pubmed.ncbi.nlm.nih.gov/37833325/)

## Seroprevalence of hepatitis A virus antibodies among children and adolescents living in Northern Thailand: an implication for hepatitis A immunization

[Natchaya Kunanithaworn](#)<sup>1</sup>, [Oramai Mueangmo](#)<sup>1,2</sup>, [Jutamad Saheng](#)<sup>1,2</sup>, [Worawan Wongjak](#)<sup>2</sup>, [Tanin Lertsiriladaku](#)<sup>2</sup>, [Tanachot Chaito](#)<sup>2</sup>, [Pasawat Nantarat](#)<sup>2</sup> and [Tavitiya Sudjaritruk](#)<sup>✉1,2</sup>

[▶ Author information](#) [▶ Article notes](#) [▶ Copyright and License information](#) [▶ PMC Disclaimer](#)

### Associated Data

[▶ Data Availability Statement](#)

### Abstract

[Go to:](#) [▶](#)

This cross-sectional study aimed to assess seroprevalence of hepatitis A virus (HAV) antibodies and identify factors associated with HAV seropositivity among children and adolescents aged 1–18 years who resided in Chiang Mai, Thailand. Sociodemographic characteristics, sanitation/hygiene, and history of HAV vaccination were collected. Anti-HAV IgG antibody was determined, and a level  $\geq 1.0$

has data citations[filter]»

## humanVACCINES & IMMUNOTHERAPEUTICS

[Hum Vaccin Immunother.](#) 2020; 16(11): 2816–2821.

PMCID: PMC7746250

Published online 2020 Apr 3. doi: [10.1080/21645515.2020.1741997](https://doi.org/10.1080/21645515.2020.1741997)

PMID: [32243237](https://pubmed.ncbi.nlm.nih.gov/32243237/)

### Review of long term immunogenicity and tolerability of live hepatitis A vaccine

[Nitin Shah](#),<sup>a</sup> [MMA Faridi](#),<sup>b</sup> [Monjori Mitra](#),<sup>c</sup> [Ashish Bavdekar](#),<sup>d</sup> [Archana Karadkhele](#),<sup>e</sup> [Gaurav Puppalwar](#),<sup>e</sup> and [Rishi Jain](#)<sup>e</sup>

► [Author information](#) ► [Copyright and License information](#) [PMC Disclaimer](#)

#### Associated Data

► [Data Citations](#)

#### ABSTRACT

[Go to:](#) ►

Hepatitis A represents one of the major public health problems worldwide including India. Vaccination is the most effective way to prevent hepatitis A infection. Two types of hepatitis A vaccines-live attenuated (H2 strain) and inactivated (killed) are available for use in clinical practice in India with former having advantage of a single-dose compared to two-dose killed vaccine. One of the important characteristic of an ideal vaccine includes its ability to provide life-long protection. In

“ Cite

📖 Collections

SHARE



RESOURCES

[Similar articles](#)

[Cited by other articles](#)

[Links to NCBI Databases](#)



has associated data[filter]»



Collections

SHARE



RESOURCES

Similar articles

Cited by other articles

Links to NCBI Database

Vaccines (Basel)

Vaccines (B

[Vaccines \(Basel\)](#). 2023 Jul; 11(7): 1271.

PMCID: PMC10383099

Published online 2023 Jul 21. doi: [10.3390/vaccines11071271](https://doi.org/10.3390/vaccines11071271)

PMID: [37515087](https://pubmed.ncbi.nlm.nih.gov/37515087/)

## Hepatitis a Vaccine as Opportunity of Primary Prevention for Food Handlers: A Narrative Review

[Alessandra Fallucca](#),<sup>1</sup> [Vincenzo Restivo](#),<sup>1</sup> [Maria Chiara Sgariglia](#),<sup>2</sup> [Marco Roveta](#),<sup>3</sup> and [Cecilia Trucchi](#)<sup>3,\*</sup>

Virginia Recchia, Academic Editor

- ▶ [Author information](#) ▶ [Article notes](#) ▶ [Copyright and License information](#) ▶ [PMC Disclaimer](#)

### Associated Data

- ▶ [Supplementary Materials](#)
- ▶ [Data Availability Statement](#)

Abstract

Go to: ▶

**¡ ¡ Gracias!!!**