

Supplementary material

Table S1. Distribution of NSTEMI patients by pre-defined region and by country in EPICOR and EPICOR-Asia

Region	
<i>Country</i>	<i>Number of patients</i>
Southern Europe	1213
France	175
Greece	151
Italy	445
Spain	442
Northern Europe	2174
Belgium	274
Denmark	160
Finland	220
Germany	333
Luxembourg	1
Netherlands	293
Norway	442
UK	451
Eastern Europe	1235
Romania	332
Poland	317
Slovenia	66
Turkey	520
Latin America	1003
Argentina	260
Brazil	192

Mexico	277
Venezuela	274
China	4253
Hong Kong, Singapore & South Korea	553
Hong Kong	69
Singapore	55
South Korea	429
India	986
South-East Asia	514
Malaysia	67
Thailand	367
Vietnam	80
Total	11,931

Table S2. Hospital characteristics and non-medical management

	All patients	Southern Europe	Northern Europe	Eastern Europe	Latin America	China	SK, HK & Singapore	India	South-East Asia
Hospital characteristics, <i>n</i> of patients (%)									
Coronary/intensive care unit	11,629 (97.5)	1195 (98.5)	2069 (95.2)	1218 (98.6)	962 (95.9)	4194 (98.6)	553 (100.0)	986 (100)	452 (87.9)
Catheterization laboratory	10,423 (87.4)	979 (80.7)	1509 (69.4)	1006 (81.5)	785 (78.3)	4226 (99.4)	548 (99.1)	986 (100)	384 (74.7)
If yes, 24/7 PCI program	8928 (74.8)	844 (69.6)	867 (39.9)	861 (69.7)	624 (62.2)	3938 (92.6)	532 (96.2)	978 (99.2)	284 (55.3)
On-site cardiac surgery	8630 (72.3)	488 (40.2)	740 (34.1)	671 (54.3)	819 (81.7)	4029 (94.7)	548 (99.1)	982 (99.6)	353 (68.7)
Patient management									
LVEF measured, <i>n</i> (%)	8572 (71.9)	1028 (84.8)	1396 (64.2)	1023 (82.8)	633 (63.1)	3219 (75.7)	396 (71.6)	509 (51.6)	368 (71.6)
LVEF <40%, <i>n</i> (%)	797 (6.7)	91 (7.5)	148 (6.8)	128 (10.4)	88 (8.8)	132 (3.1)	38 (6.9)	106 (10.8)	66 (12.8)
Coronary angiography, <i>n</i> (%)	9264 (78.4)	1020 (84.4)	1850 (85.1)	924 (75.5)	603 (60.4)	3395 (80.2)	500 (90.6)	695 (75.9)	277 (53.9)
Coronary revascularization, <i>n</i> (%)*	7176 (61.0)	830 (68.7)	1420 (65.4)	649 (53.3)	386 (38.8)	2792 (66.1)	437 (79.3)	464 (51.8)	198 (38.6)
 PCI, <i>n</i> (%)	6909 (58.7)	808 (66.8)	1302 (60.0)	625 (51.0)	349 (35.1)	2768 (65.6)	433 (78.6)	440 (49.3)	184 (35.8)
 CABG, <i>n</i> (%)	285 (2.4)	24 (2.0)	123 (5.7)	24 (2.0)	38 (3.8)	34 (0.8)	4 (0.7)	24 (2.6)	14 (2.7)
Length of hospital stay,	6 (4, 10)	5 (4, 7)	5 (3, 7)	5 (3, 8)	5 (3, 8)	9 (6, 12)	4 (3, 6)	3 (2, 5)	5 (3, 7)

	All patients	Southern Europe	Northern Europe	Eastern Europe	Latin America	China	SK, HK & Singapore	India	South-East Asia
days, median (IQR)									

P-value was < 0.001 for all comparisons between regions. Red colour depicts the highest value, blue colour the lowest value of each row.

CABG, coronary artery bypass grafting; HK, Hong Kong; IQR, interquartile range; LVEF, left ventricular ejection fraction; LOS, length of stay; PCI, percutaneous coronary intervention; SK, South Korea.

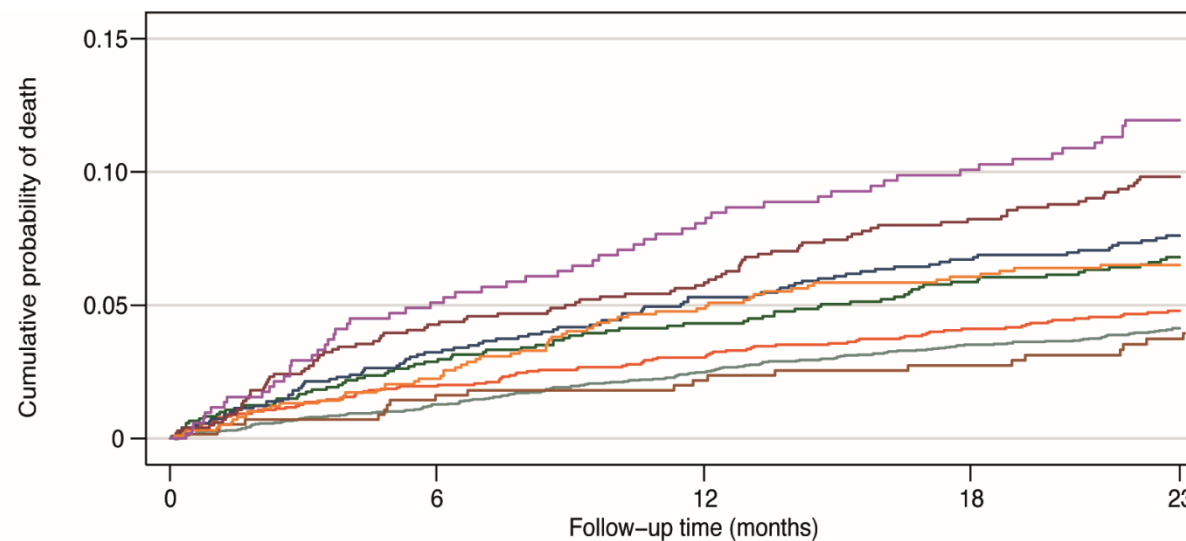
Table S3. Post-discharge crude 30-day and 2-year all-cause mortality, and risk-adjusted 2-year mortality rates by region

	Number of patients	Deaths at 30 days <i>N</i> (%)	Deaths at 2 years <i>N</i> (%)	2-year adjusted mortality rate % (95% CI)
Southern Europe	1213	14 (1.2)	81 (6.7)	7.3 (5.6–8.9)
Northern Europe	2174	20 (0.9)	100 (4.6)	5.7 (4.5–6.8)
Eastern Europe	1235	14 (1.1)	94 (7.6)	10.1 (7.9–12.2)
Latin America	1003	10 (1.0)	97 (9.7)	10.5 (8.3–12.7)
China	4353	11 (0.3)	169 (4.0)	6.6 (5.5–7.7)
SK, HK & Singapore	554	3 (0.5)	21 (3.8)	5.1 (2.9–7.3)
India	986	3 (0.3)	62 (6.3)	7.2 (5.3–9.1)
South-East Asia	514	6 (1.2)	60 (11.7)	9.1 (6.7–11.5)
Total	11 931	81 (0.7)	684 (5.7)	7.4 (6.8–8.0)

Percentages of deaths at 30 days and 2 years refers to risk estimated by proportion, whilst region-standardized mortality rates were obtained using Poisson models and reported with 95% confidence interval (CI).

HK, Hong Kong; SK, South Korea.

Figure S1. Cumulative probability (Kaplan-Meier risk) of all-cause, post-discharge mortality by region



	0	6	12	18	23
(1) South Korea & Hong Kong & Singapore	551	534	523	506	469
(2) China	4241	4149	3985	3744	3504
(3) Northern Europe	2167	1947	1829	1735	1634
(4) India	985	937	883	850	820
(5) Southern Europe	1208	1099	1055	1018	984
(6) Eastern Europe	1226	1137	1084	1051	1003
(7) Latin America	997	924	886	825	762
(8) South-East Asia	514	480	461	445	415