

Proteomic Profiling of Retinoblastoma-Derived Exosomes Reveals Potential Biomarkers of Vitreous Seeding

Angela Galardi, Marta Colletti, Chiara Lavarello, Virginia Di Paolo, Paolo Mascio, Ida Russo, Raffaele Cozza, Antonino Romano, Paola Valente, Rita De Vito, Luisa Pascucci, Hector Peinado, Angel M. Carcaboso, Andrea Petretto, Franco Locatelli and Angela Di Giannatale

Figure 1D

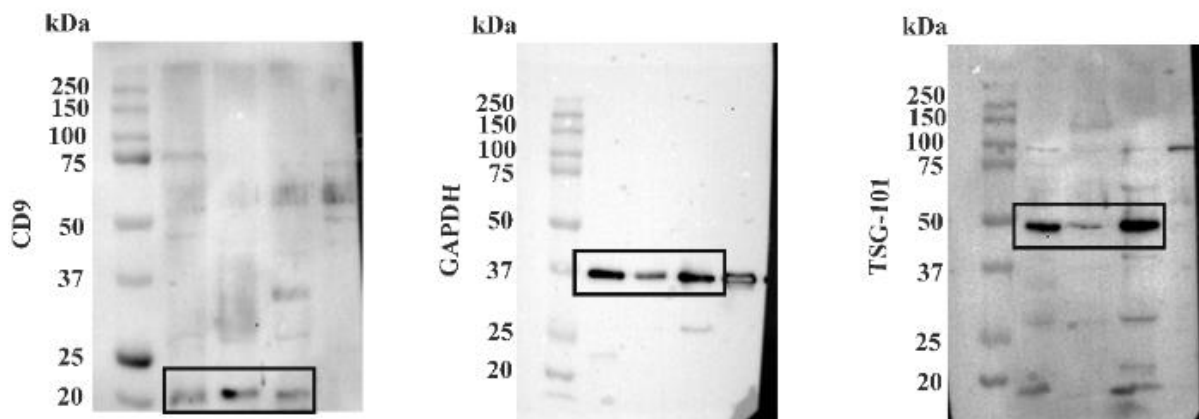


Figure S1. Detailed information about Figure 1D.



© 2020 by the authors. Licensee MDPI, Basel, Switzerland. This article is an open access article distributed under the terms and conditions of the Creative Commons Attribution (CC BY) license (<http://creativecommons.org/licenses/by/4.0/>).