

Research Paper

Multiplexed monitoring of a novel autoantibody diagnostic signature of colorectal cancer using HaloTag technology-based electrochemical immunosensing platform

María Garranzo-Asensio^{1,2}, Ana Guzmán-Aránguez¹, Eloy Povedano³, Víctor Ruiz-Valdepeñas Montiel³, Carmen Poves⁴, María Jesús Fernandez-Aceñero⁵, Ana Montero-Calle², Guillermo Solís-Fernández², Servando Fernandez-Diez⁴, Jordi Camps⁶, Meritxell Arenas⁶, Elisabeth Rodríguez-Tomás^{6,7}, Jorge Joven⁶, Maricruz Sanchez-Martinez², Nuria Rodriguez⁸, Gemma Dominguez⁹, Paloma Yáñez-Sedeño³, José Manuel Pingarrón^{3,*}, Susana Campuzano^{3,*}, Rodrigo Barderas^{2,*}

1. Departamento de Bioquímica y Biología Molecular, Facultad de Óptica y Optometría, Universidad Complutense de Madrid, 28037 Madrid, Spain.
2. UFIEC, Chronic Disease Programme, Instituto de Salud Carlos III, Majadahonda 28220, Madrid, Spain.
3. Departamento de Química Analítica, Facultad de Ciencias Químicas, Universidad Complutense de Madrid, 28040 Madrid, Spain
4. Gastroenterology Unit, Hospital Universitario Clínico San Carlos, E-28040, Madrid, Spain
5. Pathology Department, University Hospital Gregorio Marañón, E-28007 Madrid, Spain
6. Unitat de Recerca Biomèdica, Hospital Universitari Sant Joan, Institut d'Investigació Sanitària Pere Virgili, Universitat Rovira i Virgili, Reus (Spain).
7. Department of Radiation Oncology, Hospital Universitari Sant Joan, Institut d'Investigació Sanitària Pere Virgili, Universitat Rovira i Virgili, Reus (Spain).
8. Medical Oncology Department, Hospital Universitario La Paz, E-28046, Madrid, Spain.
9. Departamento de Medicina, Facultad de Medicina, Instituto de Investigaciones Biomédicas "Alberto Sols", CSIC-UAM, E-28029, Madrid, Spain.

* Co-senior authors

✉ Corresponding authors: Rodrigo Barderas, Functional Proteomics Unit, UFIEC, Chronic Disease Programme, Instituto de Salud Carlos III, E-28220 Majadahonda, Madrid, Spain; Tel.: 34-91-8223231; E-mail: r.barderasm@isciii.es. Susana Campuzano, Departamento de Química Analítica, Facultad de Ciencias Químicas, Universidad Complutense de Madrid, 28040 Madrid, Spain; Tel.: 34-91-3944219; E-mail: susanacr@ucm.es. José M. Pingarrón, Departamento de Química Analítica, Facultad de Ciencias Químicas, Universidad Complutense de Madrid, 28040 Madrid, Spain; Tel.: 34-91-3944315; E-mail: pingarro@quim.ucm.es

© The author(s). This is an open access article distributed under the terms of the Creative Commons Attribution License (<https://creativecommons.org/licenses/by/4.0/>). See <http://ivyspring.com/terms> for full terms and conditions.

Received: 2019.11.27; Accepted: 2020.01.02; Published: 2020.02.10

Abstract

Background and Purpose: The humoral immune response in cancer patients can be used for early detection of the disease. Autoantibodies raised against tumor-associated antigens (TAAs) are promising clinical biomarkers for reliable cancer diagnosis, prognosis, and therapy monitoring. In this study, an electrochemical disposable multiplexed immunosensing platform able to integrate difficult- and easy-to-express colorectal cancer (CRC) TAAs is reported for the sensitive determination of eight CRC-specific autoantibodies.

Methods: The electrochemical immunosensing approach involves the use of magnetic microcarriers (MBs) as solid supports modified with covalently immobilized HaloTag fusion proteins for the selective capture of specific autoantibodies. After magnetic capture of the modified MBs onto screen-printed carbon working electrodes, the amperometric responses measured using the hydroquinone (HQ)/H₂O₂ system were related to the levels of autoantibodies in plasma.

Results: The biosensing platform was applied to the analysis of autoantibodies against 8 TAAs described for the first time in this work in plasma samples from healthy asymptomatic individuals (n=3), and patients with high-risk of developing CRC (n=3), and from patients already diagnosed with colorectal (n=3), lung (n=2) or breast (n=2) cancer. The developed bioplatfrom demonstrated an improved discrimination between CRC patients and controls (asymptomatic healthy individuals and breast and lung cancer patients) compared to an ELISA-like luminescence test.

Conclusions: The proposed methodology uses a just-in-time produced protein in a simpler protocol, with low sample volume, and involves cost-effective instrumentation, which could be used in a high-throughput manner for reliable population screening to facilitate the detection of early CRC patients at affordable cost.

Key words: colorectal cancer; biosensor; early cancer detection; electrochemical bioplatfroms; halotag fusion proteins; liquid biopsy

Introduction

Colorectal cancer (CRC) is the second deadliest cancer worldwide because of its late diagnosis. The 5-year survival rate associated to late diagnosis drops to 6-10% [1]. The study of the humoral immune response has been demonstrated useful to identify tumor-associated antigens (TAAs) in CRC with diagnostic ability. Autoantibodies against TAAs appear up to three years before clinical symptoms because of the immune system amplification, making them interesting targets for early cancer detection [2-6]. Early CRC diagnosis by population screening would increase overall patient well-being, as well as have an important impact on overall Health Systems since 90% of early diagnosed patients are successfully cured.

By protein and phage microarrays, among other approaches, numerous CRC TAAs whose autoantibodies have potential diagnostic ability have been described [4, 7-12]. However, the detection of autoantibodies to some of these TAAs had to be discarded because they were difficult-to-express and/or purify proteins because of degradation or aggregation during purification or storage. These problems make it very difficult and time-costly (if possible) to include them into multiplexed diagnostic panels. Thus, the development of multiplexed biosensing strategies coupled to *in vitro* expression systems for autoantibody detection able to overcome such problems would be of great interest. On the one hand, mammalian cellular extracts would be ideal since it would allow the proteins to be expressed in a short period of time with correct folding and no degradation to ensure its functionality. On the other hand, current electrochemical biosensing platforms, entailing straightforward processes and capable of accurately detecting specific targets in scarcely treated biofluids represent an interesting alternative to conventional immunoassays. Their versatility, amenability to detect numerous molecular targets simultaneously with high levels of sensitivity and specificity, capacity for automation, affordability, portability and minuscule amount of sample requirement make them ideal candidates to be adapted in clinical routine for point-of-care (POC) diagnosis of cancer and other prevalent diseases [13-28].

This work reports the construction of an electrochemical immunosensing platform using *in vitro* transcription/translation expressed HaloTag fusion proteins self-assembled onto commercial magnetic microparticles (MBs). HaloTag is an engineered dehalogenase developed to covalently bind to halogenated alkanes [29, 30], which in addition can improve the solubility of fusion proteins providing higher yields, purity and overall recovery of the expressed proteins in comparison to other tags as FLAG, 3×FLAG or His(6)Tag [30]. Amperometric detection at screen-printed carbon electrodes (SPCEs) was performed to evaluate the diagnostic potential of a novel autoantibody panel composed of eight TAAs (GTF2B, MAPKAPK3, PIM1, PKN1, SRC, STK4, SULF1, and p53) previously validated or not validated for CRC diagnosis because of their difficulty to be expressed or purified [7, 9]. It is worth to remark that in a previous work, we reported the use of MBs coupled to *in situ* expressed HaloTag fusion proteins and electrochemical detection at SPCEs for the accurate determination of blood autoantibodies. However, this technology was applied only to the determination of antibodies against a single TAA (p53) [13]. This work showed that the HaloTag fusion protein-based electrochemical immunosensing was less prone to false results than ELISA involving recombinant TAAs produced in bacterial hosts. This fact was attributed to the differences in concentration, type, and immobilization of bioreceptors (p53 expressed in bacteria vs HaloTag-p53 expressed in a mammalian milieu) which certainly affected the autoantibody capture efficiency, and to the remarkably higher sensitivity (440 times) and the larger sera dilution factor required by the electrochemical method compared to the ELISA test. Interestingly, the analysis of the difficult-to-express TAAs PKN1, SRC, and SULF1 could not be carried out by ELISA and/or Luminex methods. Moreover, PIM1 forms dimers that can block antibody recognition sites and, therefore, if aggregation occurs becomes useless for patient diagnosis, as in Luminex-based approaches [7]. In addition, MAPKAPK3, STK4, and p53 were included as controls to evaluate whether these TAAs maintain their previously described diagnostic potential [7, 9].

In vitro expressed TAAs coupled to HaloTag were immobilized *in situ* into MBs to avoid protein degradation. Then, modified MBs were incubated with plasma samples from controls, CRC patients, or colorectal individuals carrying premalignant lesions to assess the diagnostic ability of the autoantibodies. The developed biosensing multiplexed platform can be envisioned as a point-of-care (POC) device capable of detecting these autoantibodies in plasma.

Results

Colorectal cancer tumor-associated antigens selection

Previous studies related to the analysis of the humoral immune response in CRC identified 91 possible TAAs by using protein microarrays. Among them, difficult-to-express and difficult-to-purify TAAs or autoantigens suffering from extensive degradation with high diagnostic potential were discarded for analysis and/or validation. Therefore, only a panel consisting of 6 TAAs was considered for early CRC detection [4, 7, 10, 11].

In this work, we have developed an electrochemical immunosensing strategy based on HaloTag technology able to include previously discarded proteins, due to their challenging production and/or purification, into diagnostic panels with the ultimate goal of constructing a POC device able to discriminate CRC patients and individuals carrying premalignant lesions from controls. For such a purpose, eight CRC TAAs were selected for the study: GTF2B, MAPKAPK3, PIM1, PKN1, SRC, STK4, SULF1, and p53, where PIM1, PKN1, SRC, and SULF1 (and p53) are difficult-to-express and/or purify proteins and GTF2B, MAPKAPK3, and STK4 are easy-to-express proteins used as controls to ascertain whether this approach maintains their previously described CRC diagnostic ability [7, 9].

CRC TAAs encoding cDNAs were cloned as HaloTag-fusion proteins into vectors optimized for *in vitro* protein expression for subsequent covalent immobilization of the proteins onto MBs for direct evaluation of autoantibody levels in plasma of patients and controls (Table 1 and Table S1) to avoid any degradation or precipitation during purification and storage, compulsory steps for other techniques (i.e. ELISA, Luminex...) [13]. Once verified the correct protein expression and established the diagnostic signature by luminescence [31], a multiplexed electrochemical immunoassay capable of detecting autoantibody presence as a POC device for CRC detection was developed (Figure 1).

Cloning and *in vitro* protein expression

To evaluate whether the proposed system of *in vitro* protein expression and immobilization of the autoantibody targets onto MBs could successfully render all TAA fusion proteins, we evaluated their correct *in vitro* expression. Figure S1A shows as immunostaining of the expression product exhibited a correct expression. Next, to verify that the HaloTag fusion proteins were functional for their covalent binding to functionalized chloroalkane MBs, and thus, could be used for selective capture of autoantibodies against them, we immobilized them onto MBs through the HaloTag and incubated the resulting HaloTag fusion protein-MBs with, alternatively, a specific antibody against the tag or against the indicated TAAs. A specific luminescence signal was obtained for all proteins using the anti-HaloTag mAb (Figure S1B) or for the indicated TAAs using their specific antibodies (Figure S1C). These results confirmed the successful immobilization of functional HaloTag fusion proteins on the MBs and the great potential of the protocols applied to any protein without particular optimization.

Table 1. Samples used in the study.

Classification		Age (years) ± SD	Sample size (Male/Female)
Control	Negative colonoscopy/asymptomatic	44±7	11/19
	Other cancers	58±12	16/24
Pathological	Premalignant	60±7	16/9
	CRC	70±11	13/13

Evaluation of autoantibody seroreactivity levels by luminescence beads immunoassay

Once established the optimal working conditions, we evaluated the optimal plasma dilution to be used by luminescence beads immunoassay to compare the results with those previously reported for GTF2B, MAPKAPK3, and STK4 [7, 9]. Figure S1D shows as better discrimination between the tumor and control group for the determination of autoantibodies a 1:300 dilution. Next, we proceeded to evaluate the seroreactivity levels of 125 individuals -31 asymptomatic healthy individuals, 20 lung cancer patients, 20 breast cancer patients, 28 premalignant individuals, and 26 CRC patients- to determine whether autoantibody presence could discriminate between groups, and to assess whether the developed methodology was successful to be used with difficult-to-express and easy-to-express CRC TAAs proteins for diagnostic purposes (Figure 2).

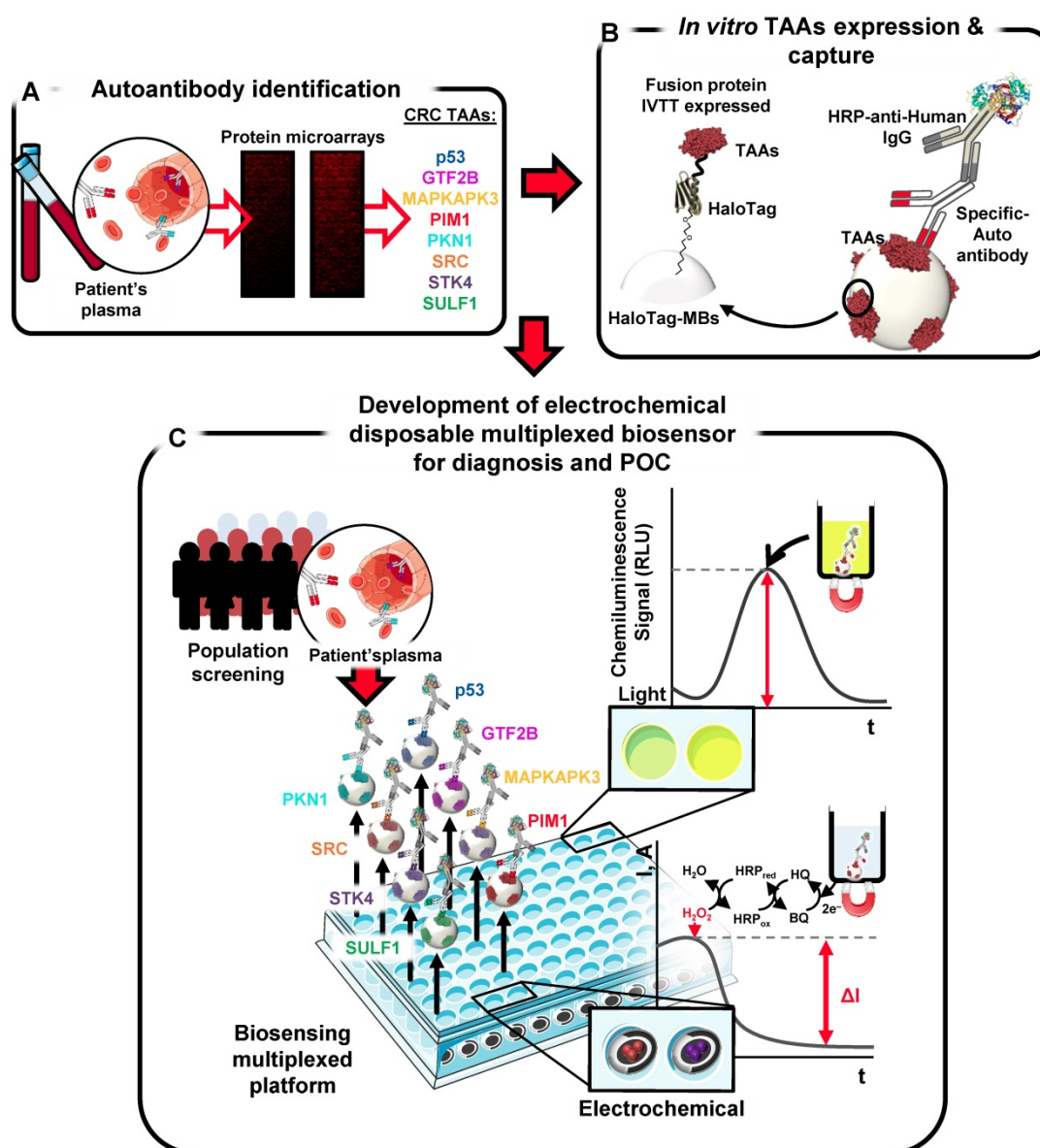


Figure 1. Schematic design of the strategy. Autoantibody targets were identified using protein microarrays incubated with plasma samples from CRC patients. Targets were then *in vitro* expressed as HaloTag fusion proteins for their subsequent immobilization onto MBs for evaluation of their diagnostic potential and development of a multiplexed electrochemical immunosensing platform for CRC early diagnosis.

Overall, we found that the evaluated autoantigens target of autoantibodies -except p53- could discriminate with statistical significance ($p < 0.05$) among the pathological individuals (CRC patients and premalignant individuals) and all control groups, as well as all controls *vs* CRC patients (Figure 3A, B). However, when comparing the control and premalignant patients, GTF2B and p53 failed to distinguish between groups with statistical significance even though the premalignant group showed higher autoantibody levels (Figure 3C). When comparing the autoantibody levels in asymptomatic individuals and the pathological group, all the autoantibody targets except SRC could significantly discriminate between groups, while all autoantibody

targets could discriminate between them with statistical significance when comparing the asymptomatic individuals with the CRC patients (Figure 3D, E). However, GTF2B, SRC, SULF1 and p53 could not discriminate between the asymptomatic and premalignant subjects with statistical significance although the premalignant group showed higher autoantibody levels (Figure 3F). To evaluate whether autoantibodies were CRC specific, we compared levels between the asymptomatic subjects and breast and lung cancer individuals. Autoantibodies against p53 could discriminate with statistical significance ($p < 0.05$) between both groups but none of the CRC TAAs (Figure 3G).

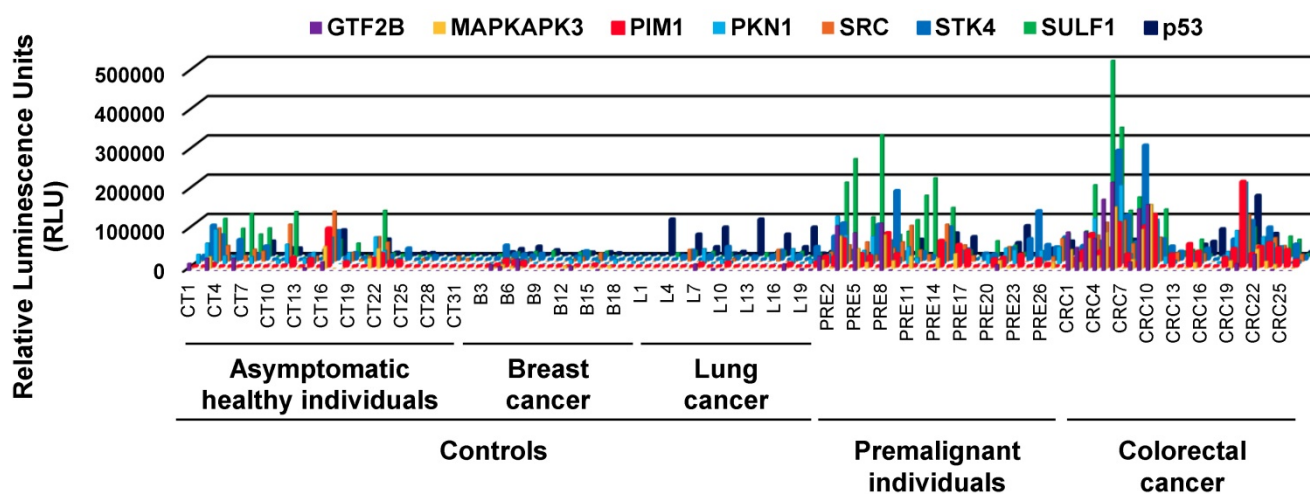


Figure 2. Autoantibody measurement by luminescence of the plasma samples. Evaluation of autoantibody presence showed that the luminescence signal obtained for the premalignant and CRC groups was considerably higher than the signal obtained for the control groups.

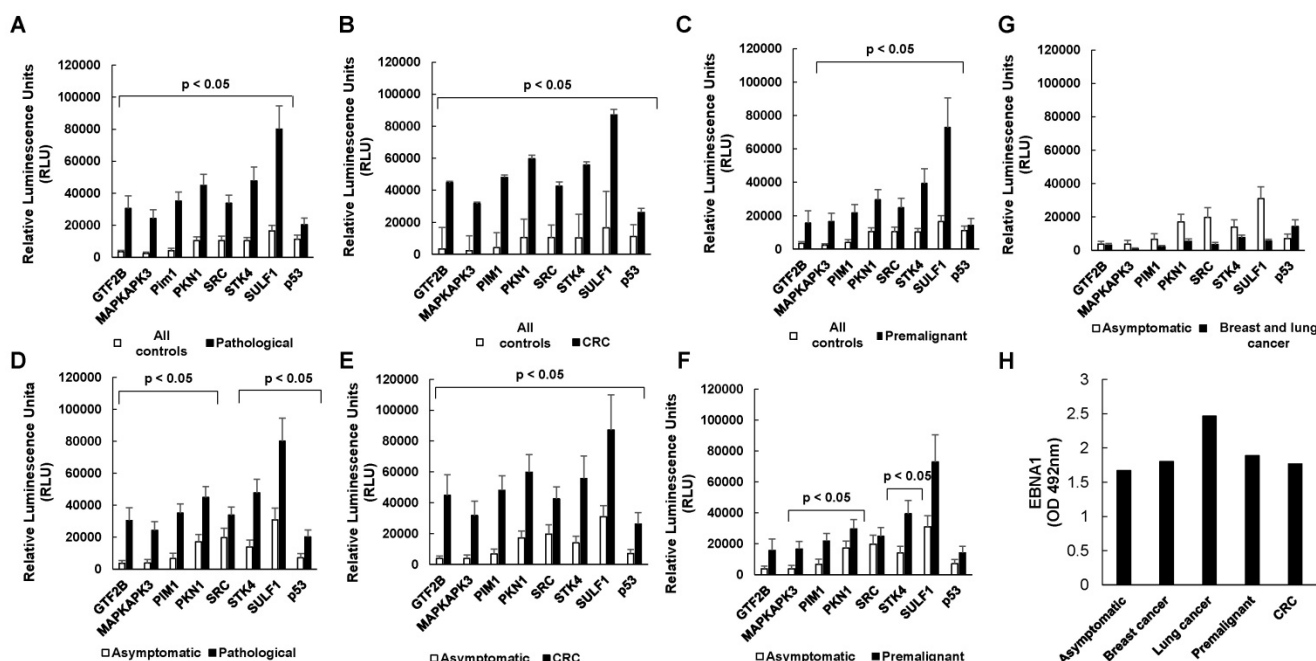


Figure 3. Statistical analysis of autoantibody levels according to patients' groups. Autoantibodies against the eight targets could discriminate between the control and pathological group (A) and between controls and CRC patients (B). However, GTF2B and p53 could not discriminate between the control and premalignant subjects (C). All the autoantibodies but SRC could discriminate between the asymptomatic subjects and the pathological group (D). Moreover, the 8 autoantibodies could discriminate between the asymptomatic individuals and CRC patients (E). However, only MAPKAPK3, PIM1, PKN1, and STK4 could discriminate between asymptomatic and premalignant subjects (F). Furthermore, just p53 could differentiate between the asymptomatic individuals and breast and lung cancer patients (G). EBNA-1 seroreactivity was analyzed as a test for the specificity of the assay, showing similar levels in all groups (H). Since >95% of the human population has been infected with the Epstein Barr virus, antibodies specific against EBNA1 would serve as specific control of the seroreactivity among all the analyzed groups. All controls: asymptomatic individuals, and breast and lung cancer patients.

EBNA1 seroreactivity was analyzed as control of the specific CRC seroreactivity. A no clear pattern of seroreactivity to EBNA1 was observed among all groups with non-significant p-values. These results clearly confirmed that the seroreactivity observed for the indicated CRC-specific autoantibodies was characteristic of the analyzed groups (Figure 3H).

Evaluation of the diagnostic potential of selected autoantibodies

Next, ROC curves were obtained to search for the optimal TAA combination to discriminate

between patients and controls (Table S2). The optimal AUC values were achieved with those autoantibodies that could discriminate patients with statistical significance, with a value of 92.4% (sensitivity 76.0%, specificity 96.7%) when comparing the asymptomatic group vs the CRC patients, and 91.8% (sensitivity 76.0% and specificity 98.6%) when factoring in the breast and lung cancer subjects with the asymptomatic group against the CRC subjects (Figure 4A, B).

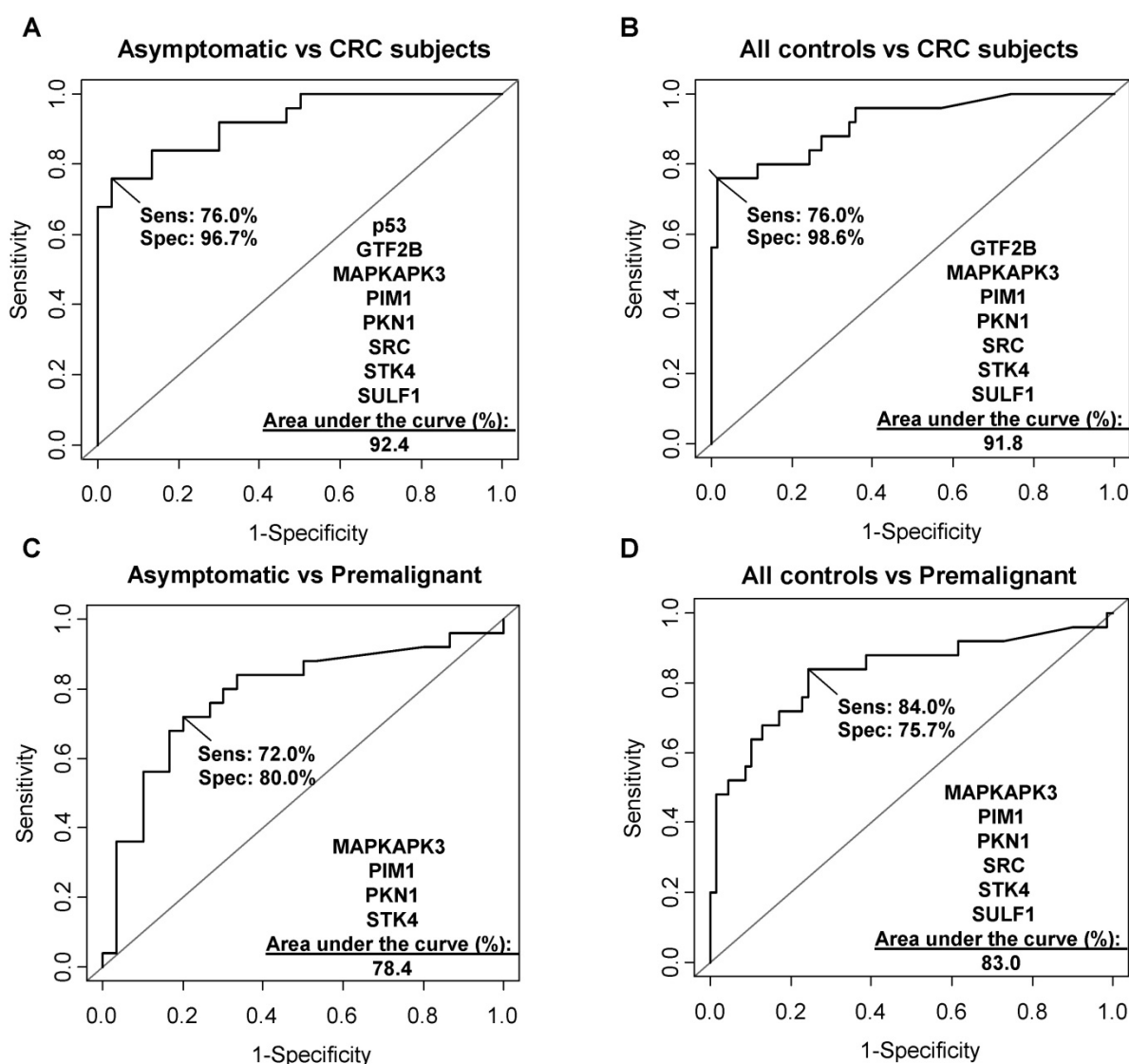


Figure 4. Diagnostic potential of the simultaneous detection of the TAAs. The diagnostic potential was analyzed by ROC curves comparing the asymptomatic vs CRC group (A), all controls vs CRC subjects (B), asymptomatic individuals vs premalignant subjects (C), and all controls vs the premalignant group (D). All controls: asymptomatic individuals, and breast and lung cancer patients.

To evaluate whether the proposed markers could also detect premalignant subjects, ROC curves comparing the asymptomatic group with the premalignant subjects as well as the control group (with the breast and lung cancer subjects) with the premalignant subjects were constructed. AUC values of 78.4% (sensitivity 72%, specificity 80%) and 83.0% (sensitivity 84%, specificity 75.7%) were found, respectively (Figure 4C, D). These AUC values, although lower than those obtained for discriminating the CRC subjects, also indicated that the markers are useful for the early detection of premalignant individuals.

These data were compared with those previously reported for GTF2B, STK4, MAPKAPK3, and p53 to ascertain whether this approach keeps their previously reported CRC diagnostic values

(Table S2, and Table S3). Our data showed that the here proposed approach is suitable for difficult-to-express and difficult-to-purify TAAs as well as for those easy-to-produce. In this sense, GTF2B, STK4, MAPKAPK3 and p53 showed a similar or even higher diagnostic ability using the here described approach than that previously reported (Table S3), which may be attributed to the lower false positives and the high sensitivity demonstrated by the HaloTag technology compared to ELISA [4, 7, 9, 11, 13].

Development of an electrochemical multiplexed immunosensing platform as a tool for early and affordable diagnostic test

The CRC autoantibody targets were also tested by means of a multiplexing electrochemical

immunosensing platform as a proof-of-concept of a POC device that could be used in a clinical setting for CRC detection (Figure 5A).

Under the optimized conditions described in the Experimental Section, the ability of the developed platform to detect the presence of autoantibodies against GTF2B, MAPKAPK3, PIM1, PKN1, SRC, STK4, SULF1, and p53 in human plasma was tested. Three asymptomatic plasma samples, samples from three premalignant individuals, three CRC patients and four breast and lung cancer patients were analysed (Figure 5B, C). As it was previously observed by luminescence, most CRC patients were reactive to most if not all TAAs, while premalignant individuals were reactive to >4 TAAs apart from p53.

We analyzed premalignant individuals, CRC patients and control groups according to this differential specific seroreactivity as cut-off. Remarkably, none of the asymptomatic patients (with most values close to background) and breast cancer patients showed seroreactivity to four or more different CRC autoantigens and were clearly discriminated from CRC patients. However, one lung cancer patient also presented seroreactivity to 4 out of 8 different CRC autoantigens. In addition, all premalignant and CRC individuals possessed autoantibodies for more than four CRC autoantigens and showed a clear signal above background, indicating the usefulness of the methodology as a possible clinical tool for the detection of CRC (Figure 5D). Furthermore, ROC curve analysis showed that the multiplexed simultaneous detection of autoantibodies against the eight CRC TAAs has a powerful diagnostic ability for CRC and colorectal premalignant individuals, with an AUC of 100% (Figure 5E).

Collectively, these results show that the developed methodology overcomes the drawbacks regarding purification, degradation and immobilization of difficult-to-express CRC TAAs so that they do not have to be discarded with the implicated loss of diagnostic ability. Moreover, the use of these TAAs allowed us to find a novel diagnostic signature with high potential for the detection of CRC through a POC device.

Discussion

The humoral immune response has been proven useful for early cancer diagnosis [2, 3, 5, 32-34]. Through different methodologies, such as ELISA, SEREX, SERPA, or other proteomic techniques, multiple potential tumor associated targets of the immune system have been identified [8, 11, 12, 35-37]. However, these methodologies are not ideal for

validation or to be used in a clinical setting, since they require either large volumes of biological samples or are expensive and time-consuming when they have to detect multiple targets simultaneously, or require a high specialized setting. In this work, we have optimized a novel methodology based on the *in vitro* expression of CRC-specific autoantibody targets coupled to HaloTag that allows their immobilization onto MBs and the construction of an electrochemical immunosensing platform with multiplexing capabilities ideal as a POC device for the analysis in serum/plasma.

In vitro protein expression using mammalian cellular extracts offers numerous advantages versus the most common bacteria and yeast expression systems. As it has been shown in previous studies, some TAAs in CRC exhibited expression and purification drawbacks which made it hard to develop with them a methodology for CRC diagnosis [4, 7, 9-11]. The expression of the autoantibody targets coupled to the HaloTag using a previously developed system for p53 made it possible to obtain the difficult-to-express proteins previously discarded with their correct folding and no degradation, and in less time than with conventional techniques. Moreover, through the HaloTag, these functionalized proteins were covalently immobilized *in situ* to carry out the assay, so that no storage or dimerization problems occurred and autoantibody detection was not hindered by their degradation or oligomerization. It is important to note also that this protocol for *in situ* production and selective capture of the HaloTag fusion proteins onto the MBs is much simpler and shorter (just one overnight step) than the conventional procedure to get purified TAAs produced in bacteria, insect, or mammalian cells, which usually requires weeks or months, and sometimes makes it impossible to produce difficult-to-express or -purify proteins and are more prone to give false positive results due to the presence of bacterial contaminants.

Autoantibody detection in plasma samples is an interesting alternative to conventional diagnostic techniques for CRC -such as colonoscopy- since it is a non-invasive (or low- invasive since blood collection is required) approach that can detect the disease at either premalignant (low- and high-grade adenomas) and CRC at early stages when its treatment get more than 90% of curation only with tumor resection. Up to date, autoantibody levels have been described to be useful for the diagnosis of multiple different diseases [35, 38-40], apart from other cancer malignancies [41, 42], and thus, this methodology could also be applied for different diseases.

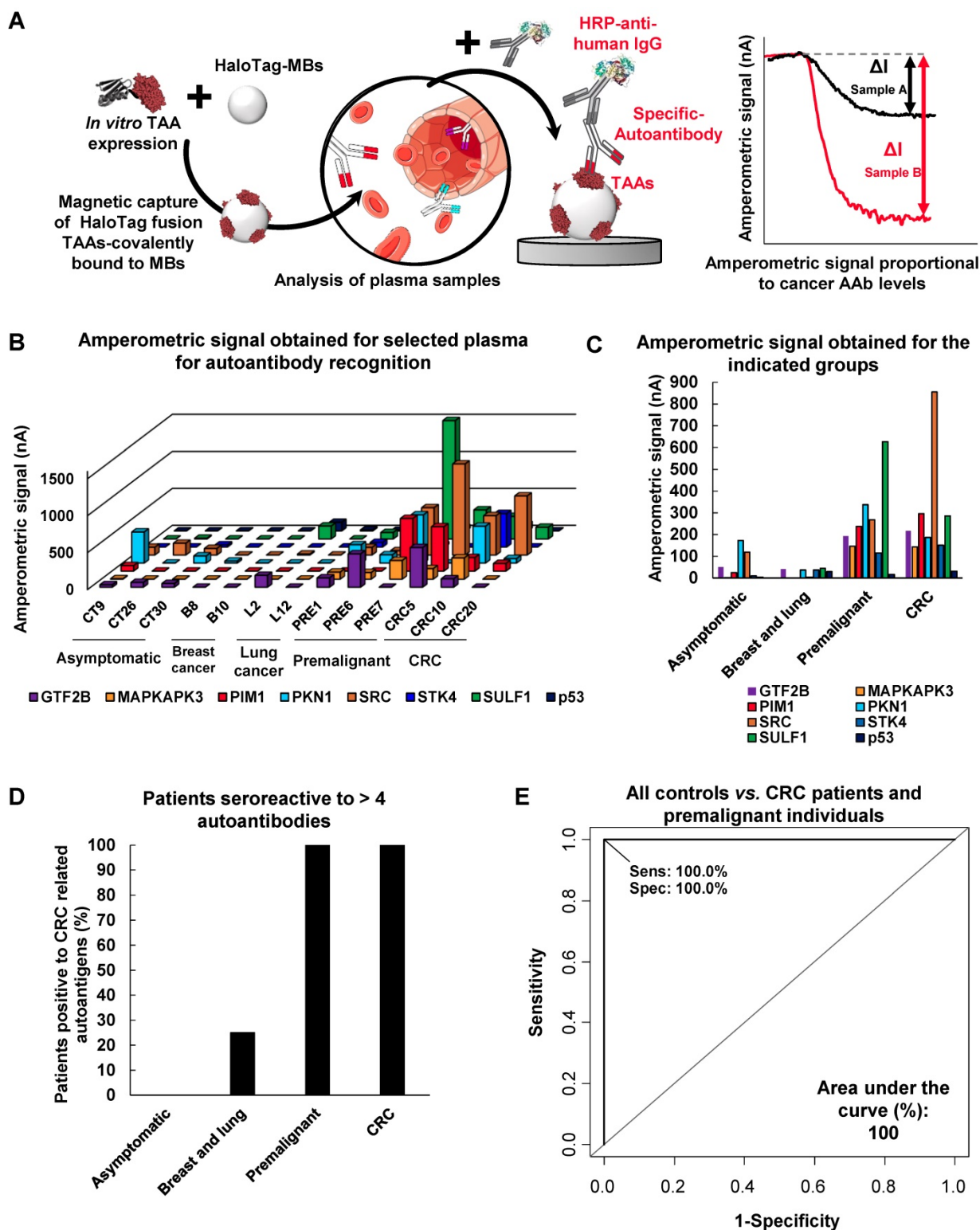


Figure 5. Autoantibody measurement in plasma samples by the multiplexed electrochemical immunosensing platform. (A) Schematic design of the proposed strategy. **(B, C)** Amperometric responses obtained for the TAAs were larger for the premalignant and CRC subjects in comparison to the asymptomatic, where they were almost undetectable. **(D)** Percentage of patients positive to CRC related autoantibodies detected by the biosensor. **(E)** ROC curve of autoantibody detection against all targets using the electrochemical immunosensing platform. Premalignant, premalignant colorectal individuals.

In this work, we found that the simultaneous detection of autoantibodies against GTF2B, MAPKAPK3, p53, PIM1, PKN1, SRC, STK4, and SULF1 could discriminate between control

individuals and CRC patients and premalignant subjects with an AUC well above than that for CEA (the established clinical marker recommended for monitoring recurrent CRC) 90% vs 80%, and

especially for the comparison between control individuals and premalignant patients 91% vs 57%. Moreover, this autoantibody panel was specific for CRC, since it could not discriminate individuals with breast and lung cancer patients, indicating their great potential in a clinical setting.

Electrochemical biosensors are attractive potential diagnostic tools, since they offer numerous advantages in comparison to other techniques such as ELISA or Luminex [13, 43, 44]. They have a great multiplexing capability, with ability to detect different biomarkers in nature in a single measurement and directly in complex biological matrices [43]. This characteristic makes this type of biosensors ideal for CRC diagnosis since it would allow for the simultaneous autoantibody detection against the eight TAAs using a minimal plasma sample volume. The multiple detection of autoantibodies is needed for a more specific and sensitive diagnosis of the disease, and to discriminate CRC patients from other cancer patients. As shown in this work, the ROC curves of the biosensing approach demonstrated that this methodology could be successfully used in clinics to detect CRC patients. In addition, the developed methodology meets better the requirements of hospital routine and POC testing since it greatly reduces assay time and production costs. In comparison to other techniques, the simultaneous detection of the autoantibody presence takes up to 3.5 hours after protein immobilization on chloroalkane MBs. This assay time is much shorter than that required by using ELISA or Luminex for testing the same number of TAAs (about 6 hours after protein immobilization without considering the overnight immobilization of the TAAs by ELISA or the 3 days required after protein immobilization by Luminex prior to seroreactive analysis). Importantly, the multiplexed electrochemical biosensing for 8 TAAs detection is about 3 euros per patient that would be 10-20 times less expensive than other conventional immunoassays. In addition, the TAAs used for selective capture of the autoantibodies are expressed just-in-time using a cell-free expression system, allowing for the first time the determination of autoantibodies against TAAs difficult to express and/or purify. Furthermore, this methodology avoids the expensive and time demanding protocols required to express and purify cancer recombinant proteins in bacterial, insect, or mammalian cells and the concerns regarding the stability and integrity of the protein during storage, as well as the presence of potentially immunogenic bacterial products that can be a source of false positives in ELISA or Luminex assays.

Besides the use of HaloTag technology, the proposed electrochemical immunosensing platform

possesses unique features, in comparison with ELISA, derived from the use of MBs as solid supports to perform the bioassay and the electrochemical transduction at disposable electrodes. MBs have demonstrated to be a powerful and versatile tool to improve the sensitivity of bioassays, minimize matrix effect, reduce largely the assay time and make analytical procedures more compatible with higher sample throughput and automation [45-49]. Screen-printed electrodes (SPEs), can be massively and inexpensively produced from a variety of materials, in different geometries and in miniaturized and multiplexed formats and allow working with small sample volumes [47, 50]. Moreover, the developed technology is amenable to automate and implement using cost-effective and low-power requirement instrumentation, which make it applicable in both diagnostic and outpatient routines and even in limited-resource settings [23]. All these interesting features and the ability to discriminate between patient groups, make the developed bioplatfrom a promising tool compared both to ELISA and the luminescence approach to be readily implemented in low-cost, simple use, short time analysis and in high-throughput and multiplexed devices for early diagnostics, patient follow-up, and monitoring of cancer patients through reliable autoantibodies signatures determination. However, the main issue the developed electrochemical methodology would have to face might be precisely to convince of the potential and these competitive advantages to the users of ELISA technology, very accustomed with using this methodology long adopted in centralized laboratories for this type of determinations.

In conclusion, in this work we have designed and optimized a novel and versatile electrochemical biosensing strategy compatible with POC demands for the detection of multiple TAAs, even those difficult-to-be-expressed, based on the use of HaloTag fusions proteins obtained by *in vitro* expression systems maintaining or increasing their diagnostic ability. The autoantibodies against the described TAAs could discriminate CRC and premalignant subjects from control individuals with great specificity and sensitivity. The capability of the developed technology was demonstrated by performing 104 and 1,000 determinations using electrochemical and chemiluminescence detection, respectively. The results obtained using both detection techniques were comparable and showed that while no seroreactivity was observed against any of the tumor antigens selected in asymptomatic patients, 100% of patients with premalignant lesions or CRC exhibit seroreactivity to at least 4 out of the 8

selected antigens. These results confirm the possibility of reliably and minimally invasively diagnose CRC by analyzing molecular signatures comprising these eight autoantibodies. Although further improvements could be made by including other CRC TAAs to increase the diagnostic ability of the developed electrochemical technology, and further validations using larger independent patient's cohorts, the capabilities and advantages demonstrated so far reveal its potential to integrate difficult- and easy-to-express TAAs to contribute to early and reliable CRC diagnosis, and thus greatly increasing patient income and benefiting the cost associated to CRC treatment by Health Systems.

Materials and methods

Plasma samples

The Institutional Ethical Review Boards of the Instituto de Salud Carlos III, Hospital Clínico San Carlos, and La Paz Hospital approved this study on biomarker discovery and validation (CEI PI 45). Plasma samples (Table 1 and Table S1) were used accomplishing all the ethical issues and relevant guidelines and regulations.

Plasma samples (Table 1 and Table S1) were obtained from the biobanks of the Hospital Clínico San Carlos and Hospital La Paz after approval of the Ethical Review Boards of these institutions. Breast and lung cancer samples provided by Hospital Universitari de Sant Joan (Tarragona, Spain) were used accomplishing all the ethical issues and relevant guidelines and regulations. All subjects in the study gave their written informed consent to participate and all experiments were performed in accordance with relevant guidelines and regulations.

For the analysis of the CRC diagnostic ability of autoantibodies, a panel of 125 plasma samples from colorectal cancer patients and premalignant colon subjects (low- and high-grade adenomas), and control individuals (asymptomatic healthy and negative colonoscopy individuals, Fecal Occult Blood Test – FOBT- positive and colonoscopy negative individuals, and breast and lung cancer patients) was used (Table 1, and Table S1). Plasma samples were collected using a standardized sample collection protocol and stored at -80°C until use [4, 9-11].

Gateway plasmid construction, gene cloning, DNA preparation and protein expression

Sequence-verified, full-length cDNA plasmids containing selected targets for validation in flexible pDONR221 or pENTR223 vector system were obtained from the publicly available DNASU Plasmid Repository (<https://dnasu.org/DNASU/>) [51]. The ORFs were transferred by LR clonase reactions

(Invitrogen, Carlsbad, CA), alternatively, to a pANT7_cHalo or pJFT7_nHalo vector for *in vitro* protein expression to get the autoantigens expressed as fusion proteins to HaloTag in the C-terminal or in the N-terminal, respectively [13, 52]. All donor and expression plasmids were sequence verified prior to a subsequent use.

To obtain high-quality supercoiled DNA, plasmids were transformed into TOP10 *E. coli* cells and grown in 250 mL Luria Bertani (LB) supplemented with the appropriate antibiotic (100 $\mu\text{g}/\text{mL}$ Ampicilin and 40 $\mu\text{g}/\text{mL}$ kanamycin). Plasmid DNA was purified using the NucleoBond Xtra Midi kit (Macherey-Nagel Inc., Bethlehem, PA). Proteins were cell-free expressed *in vitro* using HeLa cell lysate from the 1-Step Human Coupled IVT Kit (Thermo Fisher Scientific, Waltham, MA) per manufacturer's recommendations to carry out the ELISA studies.

SDS-PAGE and western blot analysis

SDS-PAGE and western blot analysis to assess protein quality was performed as previously reported [53]. Briefly, 0.67 μL of the *in vitro* protein extracts were run in 10% SDS-PAGE and transferred to nitrocellulose membranes (Hybond-C extra). After blocking, membranes were incubated overnight at 4°C with an anti-HaloTag monoclonal antibody. Immunodetection on the membranes was achieved using HRP-conjugated goat anti-mouse IgG antibody (Table S4). Chemiluminescence signal was developed with ECL Western Blotting Substrate (Thermo Scientific) and detected on an Amersham Imager 680 (GE Healthcare).

EBNA-I ELISA

Colorimetric ELISA for EBNA-I antibody determination for the evaluation of the CRC autoantibody response specificity was accomplished by coating 0.05 μg of EBNA-I protein kindly provided by Protein Alternatives, S.L. per well in 50 μL of phosphate-buffer saline solution (PBS) in 96-well Maxisorp plates (Nunc) overnight at 4°C . Plates were then blocked using a 3% (w/v) skimmed-milk solution in PBS supplemented with 0.1% Tween (PBST) for 1 h at 37°C and then incubated 1 h at 37°C with 50 μL of the 1:300 diluted plasma samples. After extensive washing with PBST, plates were incubated for 1 h at 37°C with 50 μL of an HRP-labeled secondary antibody. Colorimetric signal was developed as previously described [54, 55].

Autoantibody analysis by luminescence beads immunoassay

Protein coupling to Magne HaloTag beads (MBs, Promega) was performed overnight at 4°C and

1000 rpm according to the manufacturer instructions using 0.67 μL of IVT expression reaction and 0.5 μL of HaloTag MBs per measurement. For covalent binding, a mixture of the required amount of protein and MBs was made taking into account the number of replicates and measurements to be performed [13, 35, 56]. After extensive washing with PBS, Tween 0.1%, Triton X-100 0.05% using a magnet and removal of non-covalently bound proteins with 0.1 M glycine, pH 2.7, HaloTag fusion proteins immobilized onto MBs were blocked with Superblock (Pierce) for 1 h. To verify covalent protein immobilization, the HaloTag fusion proteins were detected with either anti-HaloTag (Promega), or specific antibodies against the TAAs followed by 1 h incubation with the corresponding diluted HRP conjugated secondary antibody (Table S4). Alternatively, they were incubated overnight with pooled or individual plasma samples at indicated dilutions at 1000 rpm and 4 °C. After washing with PBS, Tween 0.1%, Triton X-100 0.05% as above, HRP-conjugated anti-human IgG antibody (Dako) 1:10000 diluted in PBS supplemented with Tween 20 0.1% (v/v) and 3% (w/v) BSA was incubated with the MBs. The MBs were collected and placed on black Maxisorp 96-well plates (Nunc). Signal was developed using 50 μL of SuperSignal ELISA Femto Maximum Sensitivity Substrate (Pierce, Rockford, IL) for the detection of luminescence on The Spark multimode microplate reader (Tecan Trading AG, Switzerland). Alternatively, plates were also recorded on an Amersham Imager 680 (GE Healthcare).

Autoantibody analysis by electrochemical beads immunoassay

The protocol was previously reported and optimized for the determination of p53 autoantibodies [13]. The same protocol was followed for the determination of CRC-specific autoantibodies against GTF2B, MAPKAPK3, PIM1, PKN1, SRC, STK4, SULF1, and p53. To verify the correct protein immobilization, the HaloTag fusion proteins were detected with anti-HaloTag mAb (Promega), followed by 1 h incubation with 1:3000 diluted HRP-conjugated anti-mouse IgG (Sigma Aldrich). The amperometric measurements were performed in the presence of the hydroquinone (HQ)/ H_2O_2 system [57] at disposable screen-printed carbon electrodes (SPCEs) upon magnetic capture of the MBs bearing the immunocomplexes on the working electrode [13]. The biorecognition event is monitored by the variation in the cathodic current generated by the enzymatic (HRP) reduction of H_2O_2 mediated by HQ and measured at -0.20 V (vs a Ag pseudoreference electrode) [57].

The amperometric measurements were carried out with a single SPCE for each measurement (that do not take more than 3 min) and discarded afterwards. However, no significant change in the working protocol would be required to measure simultaneous signals at arrays of 8 electrodes or even at electrochemical plates of 96 electrodes.

Statistical analysis

All statistical analyses were done with Microsoft Office Excel and the R program. For the analysis of the results obtained by luminescence and electrochemical beads immunoassays, Mann-Whitney U test was performed, and statistically significant levels were considered at $p < 0.05$. The diagnostic capacity of each individual protein as well as the combination of markers was evaluated by a receiver operating characteristic (ROC) curve. ROC curves, their corresponding area under the curve (AUC) and maximized sensitivity and specificity values were calculated using the R package Epi [58].

Supplementary Material

Supplementary figure and tables.

<http://www.thno.org/v10p3022s1.pdf>

Acknowledgments

This work was supported by the financial support of the PI17CIII/00045 grant from the AES-ISCIII program to R.B., cofounded by FEDER funds. The financial support of the CTQ2015-64402-C2-1-R (Spanish Ministerio de Economía y Competitividad) and RTI2018-096135-B-I00 (Ministerio de Ciencia, Innovación y Universidades) Research Projects and the TRANSNANOAVA NSENS-CM Program from the Comunidad de Madrid (Grant S2018/NMT-4349) to P.Y-S., S.C. and J.M.P are gratefully acknowledged. G.D. acknowledges the financial support of PI15/00246 grant of the FIS and Cátedra UAM-Roche en Medicina de Innovación. M.G-A. was supported by a contract of the Programa Operativo de Empleo Juvenil y la Iniciativa de Empleo Juvenil (YEI) with the participation of the Consejería de Educación, Juventud y Deporte de la Comunidad de Madrid y del Fondo Social Europeo. A.M-C. is a recipient of a FPU fellowship from the Ministerio de Educación, Cultura y Deporte. G.S-F. is recipient of a predoctoral contract (grant number 1193818N) supported by The Flanders Research Foundation (FWO). Predoctoral contracts from the Spanish Ministerio de Economía y Competitividad (E.P.) and Universidad Complutense de Madrid (V.R.V-M.) are also gratefully acknowledged.

Author Contributions

Conception and design: J.M.P., S.C., R.B. Development of methodology: M.G.-A., A.G.-A., A.M.-C., G.S.-F., E.P., VRV, P.Y.-S., J.M.P., S.C., R.B. Perform Research: M.G.-A., M.J.F.-A., A.M.-C., G.S.-F., E.P., VRV, S.F.-D. Analysis and interpretation of data: M.G.-A., A.G.-A., C.P., M.J.F.-A., S.C., J.M.P., R.B. Writing, review, and/or revision of the manuscript: M.G.-A., A.G.-A., C.P., M.J.F.-A., J.M.P., S.C., R.B. Technical, obtaining and processing of samples, or material support: C.P., M.J.F.-A., A.M.-C., J.C., M.A., E.R.-T., J.J., N.R., G.D.

Competing Interests

The authors have declared that no competing interest exists.

References

- Bradley CJ, Given CW, Roberts C. Disparities in cancer diagnosis and survival. *Cancer*. 2001; 91: 178-88.
- Nesterova M, Johnson N, Cheadle C, Cho-Chung YS. Autoantibody biomarker opens a new gateway for cancer diagnosis. *Biochim Biophys Acta*. 2006; 1762: 398-403.
- Noaki R, Kawahara H, Watanabe K, Ushigome T, Kobayashi S, Yanaga K. Serum p53 antibody is a useful tumor marker of early colorectal cancer. *Int Surg*. 2010; 95: 287-92.
- Barderas R, Villar-Vazquez R, Fernandez-Acenero MJ, Babel I, Pelaez-Garcia A, Torres S, et al. Sporadic colon cancer murine models demonstrate the value of autoantibody detection for preclinical cancer diagnosis. *Sci Rep*. 2013; 3: 2938.
- Pedersen JW, Gentry-Maharaj A, Fourkala EO, Dawnay A, Burnell M, Zaikin A, et al. Early detection of cancer in the general population: a blinded case-control study of p53 autoantibodies in colorectal cancer. *Br J Cancer*. 2013; 108: 107-14.
- Qiu J, Choi G, Li L, Wang H, Pitteri SJ, Pereira-Faca SR, et al. Occurrence of autoantibodies to annexin I, 14-3-3 theta and LAMR1 in prediagnostic lung cancer sera. *J Clin Oncol*. 2008; 26: 5060-6.
- Villar-Vazquez R, Padilla G, Fernandez-Acenero MJ, Suarez A, Fuente E, Pastor C, et al. Development of a novel multiplex beads-based assay for autoantibody detection for colorectal cancer diagnosis. *Proteomics*. 2016; 16: 1280-90.
- Barderas R, Babel I, Casal JI. Colorectal cancer proteomics, molecular characterization and biomarker discovery. *Proteomics Clin Appl*. 2010; 4: 159-78.
- Barderas R, Babel I, Diaz-Uriarte R, Moreno V, Suarez A, Bonilla F, et al. An optimized predictor panel for colorectal cancer diagnosis based on the combination of tumor-associated antigens obtained from protein and phage microarrays. *J Proteomics*. 2012; 75: 4647-55.
- Babel I, Barderas R, Diaz-Uriarte R, Moreno V, Suarez A, Fernandez-Acenero MJ, et al. Identification of MST1/STK4 and SULF1 proteins as autoantibody targets for the diagnosis of colorectal cancer by using phage microarrays. *Mol Cell Proteomics*. 2011; 10: M110 001784.
- Babel I, Barderas R, Diaz-Uriarte R, Martinez-Torrecuadrada JL, Sanchez-Carbayo M, Casal JI. Identification of tumor-associated autoantigens for the diagnosis of colorectal cancer in serum using high density protein microarrays. *Mol Cell Proteomics*. 2009; 8: 2382-95.
- Casal JI, Barderas R. Identification of cancer autoantigens in serum: toward diagnostic/prognostic testing? *Mol Diagn Ther*. 2010; 14: 149-54.
- Garranzo-Asensio M, Guzman-Aranguez A, Poves C, Fernandez-Acenero MJ, Torrente-Rodriguez RM, Ruiz-Valdepenas Montiel V, et al. Toward liquid biopsy: determination of the humoral immune response in cancer patients using halotag fusion protein-modified electrochemical bioplatfoms. *Anal Chem*. 2016; 88: 12339-45.
- Serafin V, Valverde A, Garranzo-Asensio M, Barderas R, Campuzano S, Yanez-Sedeno P, et al. Simultaneous amperometric immunosensing of the metastasis-related biomarkers IL-13Ralpha2 and CDH-17 by using grafted screen-printed electrodes and a composite prepared from quantum dots and carbon nanotubes for signal amplification. *Mikrochim Acta*. 2019; 186: 411.
- Valverde A, Povedano E, Ruiz-Valdepenas Montiel V, Yanez-Sedeno P, Garranzo-Asensio M, Rodriguez N, et al. Determination of Cadherin-17 in tumor tissues of different metastatic grade using a single incubation-step amperometric immunosensor. *Anal Chem*. 2018; 90: 11161-7.
- Chikkaveeraiah BV, Bhirde AA, Morgan NY, Eden HS, Chen X. Electrochemical immunosensors for detection of cancer protein biomarkers. *ACS Nano*. 2012; 6: 6546-61.
- Eletxigerra U, Martinez-Perdiguero J, Barderas R, Pingarron JM, Campuzano S, Merino S. Surface plasmon resonance immunosensor for ErbB2 breast cancer biomarker determination in human serum and raw cancer cell lysates. *Anal Chim Acta*. 2016; 905: 156-62.
- Eletxigerra U, Martinez-Perdiguero J, Merino S, Barderas R, Torrente-Rodriguez RM, Villalonga R, et al. Amperometric magnetoimmunosensor for ErbB2 breast cancer biomarker determination in human serum, cell lysates and intact breast cancer cells. *Biosens Bioelectron*. 2015; 70: 34-41.
- Esteban-Fernandez de Avila B, Araque E, Campuzano S, Pedrero M, Dalkiran B, Barderas R, et al. Dual functional graphene derivative-based electrochemical platforms for detection of the TP53 gene with single nucleotide polymorphism selectivity in biological samples. *Anal Chem*. 2015; 87: 2290-8.
- Torrente-Rodriguez RM, Campuzano S, Lopez-Hernandez E, Montiel VR, Barderas R, Granados R, et al. Simultaneous detection of two breast cancer-related miRNAs in tumor tissues using p19-based disposable amperometric magnetobiosensing platforms. *Biosens Bioelectron*. 2015; 66: 385-91.
- Li X, Ye M, Zhang W, Tan D, Jaffrezic-Renault N, Yang X, et al. Liquid biopsy of circulating tumor DNA and biosensor applications. *Biosens Bioelectron*. 2019; 126: 596-607.
- Kelley SO, Das J. High-performance nucleic acid sensors for liquid biopsy applications. *Angew Chem Int Ed Engl*. 2019; 58: 2-13.
- Dai Y, Liu CC. Recent advances on electrochemical biosensing strategies toward universal point-of-care systems. *Angew Chem Int Ed Engl*. 2019; 58: 12355-68.
- Li H, Huang Y, Zhang B, Yang D, Zhu X, Li G. A new method to assay protease based on amyloid misfolding: application to prostate cancer diagnosis using a panel of proteases biomarkers. *Theranostics*. 2014; 4: 701-7.
- Zhang Y, Gao G, Liu H, Fu H, Fan J, Wang K, et al. Identification of volatile biomarkers of gastric cancer cells and ultrasensitive electrochemical detection based on sensing interface of Au-Alg alloy coated MWCNTs. *Theranostics*. 2014; 4: 154-62.
- Lee JR, Appelmann I, Miething C, Shultz TO, Ruderman D, Kim D, et al. Longitudinal multiplexed measurement of quantitative proteomic signatures in mouse lymphoma models using magneto-nanosensors. *Theranostics*. 2018; 8: 1389-98.
- Li Y, Xiong Y, Fang L, Jiang L, Huang H, Deng J, et al. An electrochemical strategy using multifunctional nanoconjugates for efficient simultaneous detection of *Escherichia coli* O157: H7 and *Vibrio cholerae* O1. *Theranostics*. 2017; 7: 935-44.
- Liu TC, Lee YC, Ko CY, Liu RS, Ke CC, Lo YC, et al. Highly sensitive/selective 3D nanostructured immunoparticle-based interface on a multichannel sensor array for detecting amyloid-beta in Alzheimer's disease. *Theranostics*. 2018; 8: 4210-25.
- Los GV, Encell LP, McDougall MG, Hartzell DD, Karassina N, Zimprich C, et al. HaloTag: a novel protein labeling technology for cell imaging and protein analysis. *ACS Chem Biol*. 2008; 3: 373-82.
- Ohana RF, Hurst R, Vidugiriene J, Slater MR, Wood KV, Urh M. HaloTag-based purification of functional human kinases from mammalian cells. *Protein Expr Purif*. 2011; 76: 154-64.
- Garranzo-Asensio M, Guzman-Aranguez A, Poves C, Fernandez-Acenero MJ, Montero-Calle A, Ceron MA, et al. The specific seroreactivity to ΔNp73 isoforms shows higher diagnostic ability in colorectal cancer patients than the canonical p73 protein. *Sci Rep*. 2019; 9: 13547.
- Edelsberg J, Weycker D, Atwood M, Hamilton-Fairley G, Jett JR. Cost-effectiveness of an autoantibody test (EarlyCDT-Lung) as an aid to early diagnosis of lung cancer in patients with incidentally detected pulmonary nodules. *PLoS One*. 2018; 13: e0197826.
- Jett JR, Peek LJ, Fredericks L, Jewell W, Pingleton WW, Robertson JF. Audit of the autoantibody test, EarlyCDT(R)-lung, in 1600 patients: an evaluation of its performance in routine clinical practice. *Lung Cancer*. 2014; 83: 51-5.
- Lam S, Boyle P, Healey GF, Maddison P, Peek L, Murray A, et al. EarlyCDT-Lung: an immunobiomarker test as an aid to early detection of lung cancer. *Cancer Prev Res*. 2011; 4: 1126-34.
- San Segundo-Acosta P, Montero-Calle A, Fuentes M, Rabano A, Villalba M, Barderas R. Identification of Alzheimer's Disease autoantibodies and their target biomarkers by phage microarrays. *J Proteome Res*. 2019; 18: 2940-53.
- Kostianets O, Shyyan M, Antoniuk SV, Filonenko V, Kiyamova R. Panel of SEREX-defined antigens for breast cancer autoantibodies profile detection. *Biomarkers*. 2017; 22: 149-56.
- Beutgen VM, Perumal N, Pfeiffer N, Grus FH. Autoantibody biomarker discovery in primary open angle glaucoma using serological proteome analysis (SERPA). *Front Immunol*. 2019; 10: 381.
- Camacho-Encina M, Balboa-Barreiro V, Rego-Perez I, Picchi F, VanDuijn J, Qiu J, et al. Discovery of an autoantibody signature for the early diagnosis of knee osteoarthritis: data from the Osteoarthritis Initiative. *Ann Rheum Dis*. 2019.
- Nagele E, Han M, Demarshall C, Belinka B, Nagele R. Diagnosis of Alzheimer's disease based on disease-specific autoantibody profiles in human sera. *PLoS One*. 2011; 6: e23112.
- Han M, Nagele E, DeMarshall C, Acharya N, Nagele R. Diagnosis of Parkinson's disease based on disease-specific autoantibody profiles in human sera. *PLoS One*. 2012; 7: e32383.

41. Zaenker P, Gray ES, Ziman MR. Autoantibody production in cancer--the humoral immune response toward autologous antigens in cancer patients. *Autoimmun Rev.* 2016; 15: 477-83.
42. Anderson KS, LaBaer J. The sentinel within: exploiting the immune system for cancer biomarkers. *J Proteome Res.* 2005; 4: 1123-33.
43. Yanez-Sedeno P, Campuzano S, Pingarron JM. Pushing the limits of electrochemistry toward challenging applications in clinical diagnosis, prognosis, and therapeutic action. *Chem Commun.* 2019; 55: 2563-92.
44. Campuzano S, Pedrero M, González-Cortés A, Yáñez-Señedo P, Pingarrón JM. Electrochemical biosensors for autoantibodies in autoimmune and cancer diseases. *Anal Methods.* 2019; 11: 871-87.
45. Rocha-Santos TAP. Sensors and biosensors based on magnetic nanoparticles. *TrAC Trends in Anal Chem* 2014; 62: 28-36.
46. Reverte L, Prieto-Simon B, Campas M. New advances in electrochemical biosensors for the detection of toxins: Nanomaterials, magnetic beads and microfluidics systems. A review. *Anal Chim Acta.* 2016; 908: 8-21.
47. Yanez-Sedeno P, Campuzano S, Pingarron JM. Magnetic particles coupled to disposable screen printed transducers for electrochemical biosensing. *Sensors.* 2016; 16: 1585.
48. Kudr J, Klejdus B, Adam V, Zitka O. Magnetic solids in electrochemical analysis. *TrAC Trends Anal Chem* 2018; 98: 104-13.
49. Pastucha M, Farka Z, Lacina K, Mikusova Z, Skladal P. Magnetic nanoparticles for smart electrochemical immunoassays: a review on recent developments. *Mikrochim Acta.* 2019; 186: 312.
50. Vasilescu A, Nunes G, Hayat A, Latif U, Marty JL. Electrochemical affinity biosensors based on disposable screen-printed electrodes for detection of food allergens. *Sensors.* 2016; 16: 1863.
51. Seiler CY, Park JG, Sharma A, Hunter P, Surapaneni P, Sedillo C, et al. DNASU plasmid and PSI: Biology-Materials repositories: resources to accelerate biological research. *Nucleic Acids Res.* 2014; 42: D1253-60.
52. Katchman BA, Barderas R, Alam R, Chowell D, Field MS, Esserman LJ, et al. Proteomic mapping of p53 immunogenicity in pancreatic, ovarian, and breast cancers. *Proteomics Clin Appl.* 2016; 10: 720-31.
53. Barderas R, Shochat S, Timmerman P, Hollestelle MJ, Martinez-Torrecuadrada JL, Hoppener JW, et al. Designing antibodies for the inhibition of gastrin activity in tumoral cell lines. *Int J Cancer.* 2008; 122: 2351-9.
54. Mas S, Boissy P, Monsalve RI, Cuesta-Herranz J, Diaz-Perales A, Fernandez J, et al. A recombinant Sal k 1 isoform as an alternative to the polymorphic allergen from *Salsola kali* pollen for allergy diagnosis. *Int Arch Allergy Immunol.* 2015; 167: 83-93.
55. Mas S, Oeo-Santos C, Cuesta-Herranz J, Diaz-Perales A, Colas C, Fernandez J, et al. A relevant IgE-reactive 28kDa protein identified from *Salsola kali* pollen extract by proteomics is a natural degradation product of an integral 47kDa polygalaturonase. *Biochim Biophys Acta Proteins Proteom.* 2017; 1865: 1067-76.
56. Montero-Calle A, San Segundo-Acosta P, Garranzo-Asensio M, Rabano A, Barderas R. The molecular misreading of APP and UBB induces a humoral immune response in Alzheimer's Disease patients with diagnostic ability. *Mol Neurobiol.* 2019; [Epub ahead of print].
57. Camacho C, Matías JC, Chico B, Cao R, Gómez L, Simpson BK, et al. Amperometric Biosensor for hydrogen peroxide, using supramolecularly immobilized horseradish peroxidase on the β -cyclodextrin-coated gold electrode. *Electroanalysis.* 2007; 19: 2538-42.
58. Carstensen B, Plummer M, Laara E, Hills M. Epi: A Package for Statistical Analysis in Epidemiology. R package version 2.40. <https://CRAN.R-project.org/package=Epi>; 2019.